

Converting Colors

Decimal(15778747)

Have a look what the booklet for
Decimal(15778747) contains.

Decimal(15778747)	3
<i>Conversions</i>	4
<i>Details</i>	6
<i>Harmonies</i>	11
<i>Previews</i>	23
<i>Color Blindness Simulation</i>	26
<i>CSS Examples</i>	29

Color

Decimal(15778747)

Conversions

Conversions Part 1

Format	Color
Hex	F0C3BB
RGB	240, 195, 187
RGB Percent	94%, 76%, 73%
CMY	0.0588, 0.2353, 0.2667
CMYK	0.00, 0.19, 0.22, 0.06
HSL	9°, 64%, 84%
HSV	9°, 22%, 94%
XYZ	64.4199, 61.1433, 55.4203
YIQ	207.5430, 29.3880, 7.0520

Conversions

Conversions Part 2

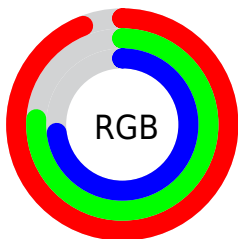
Format	Color
R _Y B	240, 196, 187
Decimal	15778747
CIE Lab	82.46, 14.82, 10.07
CIE LCh	82, 17.918, 34.178
Yxy	61.1433, 0.3559, 0.3378
Android (android.graphics.Color)	4293968827 (0xFFF0C3BB)
YUV	207.5430, -10.1277, 28.4648
Hunter-Lab	78.1942, 10.2165, 12.7141

Details

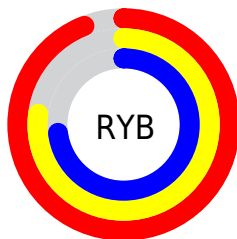
The Decimal color **15778747** is a light color, and the websafe version is hex **FFCCCC**. A complement of this color would be **12314864**, and the grayscale version is **13684944**.

A 20% lighter version of the original color is **16776435**, and **12029318** is the 20% darker color. If you saturate the color by 10%, you get **15773603**, and if you desaturate by 10%, it is **15783891**.

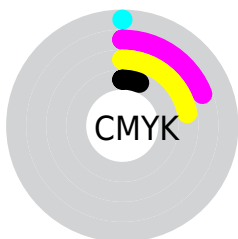
Distribution



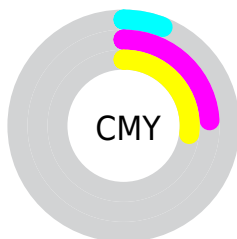
- Red (94%)
- Green (76%)
- Blue (73%)



- Red (94%)
- Yellow (77%)
- Blue (73%)



- Cyan (0%)
- Magenta (19%)
- Yellow (22%)
- Black (6%)



- Cyan (6%)
- Magenta (24%)
- Yellow (27%)

Brightness & Saturation Gradients

These gradients show how the Decimal color 15778747 changes by changing the brightness by 10 percent. The first figure shows a shift by +10% for each color and the second figure -10%.

Similar to the brightness gradients but the following saturation gradients show a change of the Decimal color 15778747 by changing the saturation by 10% instead.

 15778747

 15778747

16777215

 13871264

 16776435

 12029318

 10253421

 8477524

 6767421

 5123367

 3545107

 2228224

 0

 15778747

 15778747

 15773603

 15783891

 15768203

 15789291

 15763059

 15794175

 15757659

 15752515

 15747371

 15741971

 15737856

Harmonies

Analogous

The Analogous color harmony consists of three colors that are next to each other on the color wheel.



15712971



15778747



15255471

Triad

The Triadic color harmony groups three colors that are evenly spaced from another and form a triangle on the color wheel.



15778747



11785918



12504814

Complementary

The Complementary color scheme is a pair of colors which are on the opposite of each other on the color wheel.



15778747



12314864

Split Complementary

Split-complementary colors differ from the complementary color scheme. The scheme consists of three colors, the original color and two neighbors of the complement color.



11260907



15778747



10868687

Square

The Square scheme is like the rectangle color scheme, but the four colors are evenly spaced on the color wheel.



15778747



12964529



10606303



13879529

Rectangle

The Rectangle color scheme consists of four colors that form a rectangle on the color wheel.



15778747



14601132



10606303



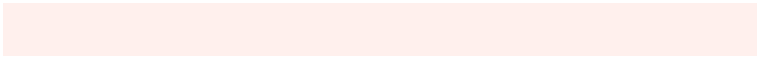
12046574

Sweetspot

The Sweet Spot groups the original color and five complimentary colors.



15778747



16773357



15776744



8419189



0



8421504

Same Dimension

The Same Dimension uses a secret algorithm to generate beautiful new colors.



15778747



16762298



15785403



7892588



12065792



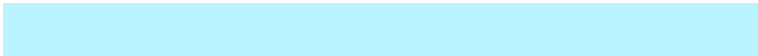
3672064

Inverse Universe

The Inverse Universe completely reimagines the original color for something new.



12314864



12252671



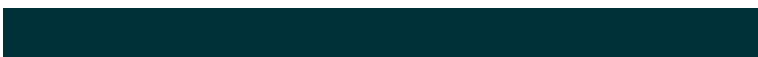
12308208



7108216



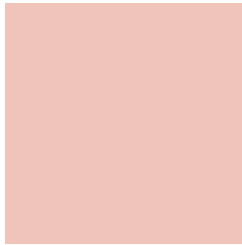
40120



12344

Previews

White Background



This preview shows how the Decimal color 15778747 looks on a white background.

Color Contrast Check

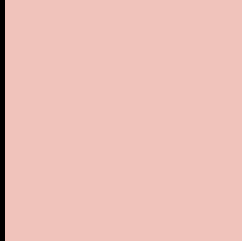
Large Text (above 18pt) WCAG AA × Fail

Any Text WCAG AA × Fail

Large Text (above 18pt) WCAG AAA × Fail

Any Text WCAG AAA × Fail

Black Background



This preview shows how the Decimal color 15778747 looks on a black background.

Color Contrast Check

Large Text (above 18pt) WCAG AA ✓ Pass

Any Text WCAG AA ✓ Pass

Large Text (above 18pt) WCAG AAA ✓ Pass

Any Text WCAG AAA ✓ Pass

If you want to check with other color combinations, try the [Color Contrast Checker](#).

Decimal 15778747 Background



This preview shows how black text looks on a background with the Decimal color 15778747.

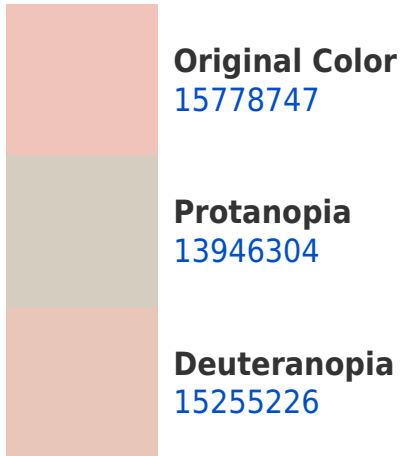


This preview shows how white text looks on a background with the Decimal color 15778747.

Color Blindness Simulation

Color vision deficiency is a very complex topic, and I could not describe the different causes any better than Wikipedia does, so if you want to learn more, you should check out their [article about color blindness](#).

Dichromacy





Tritanopia
15909071

Trichromacy



Original Color
15778747

Protanomaly
14600638

Deuteranomaly
15451578

Tritanomaly
15843784

Monochromacy



Original Color
15778747

Achromatopsia
13684944

Achromatomaly
14470088

CSS Examples

Text

The CSS property to change the color of the text to Decimal 15778747 is called "color". The color property can be set on classes, ids or directly on the HTML element.

This example shows how text in the color #F0C3BB looks like.

```
.text, #text, p{  
  color:#F0C3BB  
}
```

If you want to add a text shadow in that color use the text-shadow property, you can generate a text shadow directly with our [CSS Text Shadow Generator](#).

Here you see how black text with a 4 pixel #F0C3BB colored shadow looks like.

```
.shadow{ text-shadow: 4px 4px 2px #F0C3BB
}
```

Border

The CSS property to change the border of an element to Decimal 15778747 is called "border". The border property can be set on classes, ids or directly on the HTML element.

This example shows the color as border, it can be applied via the CSS property "border" or "border-color".

```
.border, #border, table{ border:4px solid
#F0C3BB }
```

If only the border color should be changed use the property `border-color`.

```
.border{ border-color:#F0C3BB }
```

If you want to add a box shadow in that color use:

Here you see how a box with a 4 pixel #F0C3BB colored shadow looks like.

```
.boxshadow{ -moz-box-shadow:4px 4px 4px  
4px #F0C3BB; -webkit-box-shadow:4px 4px  
4px 4px #F0C3BB; box-shadow:4px 4px 4px  
4px #F0C3BB }
```

Background

The CSS property to change the background color of an element to Decimal 15778747 is called "background". The background property can be set on classes, ids or directly on the HTML element.

```
.background, #background, body{  
background:#F0C3BB }
```

If only the background color should be changed can be used:

```
.background{ background-color:#F0C3BB }
```

This example shows the color as background, it is applied via the CSS property "background".

To optimize and compress your CSS code, you can use our [online CSS compressor and optimizer](#) based on csstidy. If you want to create a linear or radial gradient as background or border, check our [CSS Gradient Generator](#).

Hey! You found this booklet interesting? Support Converting Colors with the new Membership Option!

The pro membership hides all ads, plus gives you double the colors in the color bucket, and more awesome pro features!

[Learn more, Memberships starting at \\$2.50/m!](#)

**Follow me
on Twitter!**

@ConvertingColor