

Converting Colors

Decimal(15782589)

Have a look what the booklet for
Decimal(15782589) contains.

Decimal(15782589)	3
<i>Conversions</i>	4
<i>Details</i>	6
<i>Harmonies</i>	11
<i>Previews</i>	23
<i>Color Blindness Simulation</i>	26
<i>CSS Examples</i>	29

Color

Decimal(15782589)

Conversions

Conversions Part 1

Format	Color
Hex	F0D2BD
RGB	240, 210, 189
RGB Percent	94%, 82%, 74%
CMY	0.0588, 0.1765, 0.2588
CMYK	0.00, 0.13, 0.21, 0.06
HSL	25°, 63%, 84%
HSV	25°, 21%, 94%
XYZ	68.1671, 68.2926, 57.7331
YIQ	216.5760, 24.6210, -0.1710

Conversions

Conversions Part 2

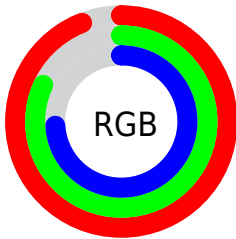
Format	Color
R _Y B	240, 225, 189
Decimal	15782589
CIE Lab	86.15, 7.24, 14.25
CIE LCh	86, 15.984, 63.048
Yxy	68.2926, 0.3510, 0.3517
Android (android.graphics.Color)	4293972669 (0xFFF0D2BD)
YUV	216.5760, -13.5950, 20.5428
Hunter-Lab	82.6393, 2.6213, 16.4266

Details

The Decimal color **15782589** is a light color, and the websafe version is hex **FFCCCC**. A complement of this color would be **12442608**, and the grayscale version is **14277081**.

A 20% lighter version of the original color is **16777205**, and **12033160** is the 20% darker color. If you saturate the color by 10%, you get **15778981**, and if you desaturate by 10%, it is **15786197**.

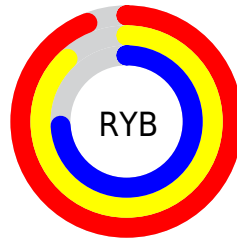
Distribution



Red (94%)

Green (82%)

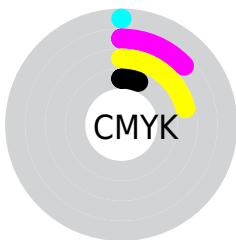
Blue (74%)



Red (94%)

Yellow (88%)

Blue (74%)

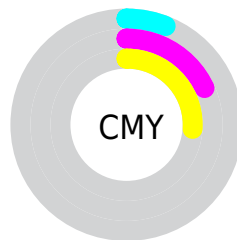


Cyan (0%)

Magenta (13%)

Yellow (21%)

Black (6%)



Cyan (6%)

Magenta (18%)

Yellow (26%)

Brightness & Saturation Gradients

These gradients show how the Decimal color 15782589 changes by changing the brightness by 10 percent. The first figure shows a shift by +10% for each color and the second figure -10%.

Similar to the brightness gradients but the following saturation gradients show a change of the Decimal color 15782589 by changing the saturation by 10% instead.

 15782589

 15782589

16777215

 13874850

 16777205

 12033160

 10257006

 8546390

 6836287

 5191977

 3679252

 2232064

 0

 15782589

 15782589

 15778981

 15786197

 15775373

 15789805

 15771765

 15793407

 15768157

 15794175

 15764293

 15760685

 15757077

 15753984

Harmonies

Analogous

The Analogous color harmony consists of three colors that are next to each other on the color wheel.



16240328



15782589



14866361

Triad

The Triadic color harmony groups three colors that are evenly spaced from another and form a triangle on the color wheel.



15782589



11854297



14472177

Complementary

The Complementary color scheme is a pair of colors which are on the opposite of each other on the color wheel.



15782589



12442608

Split Complementary

Split-complementary colors differ from the complementary color scheme. The scheme consists of three colors, the original color and two neighbors of the complement color.



13228277



15782589



11657447

Square

The Square scheme is like the rectangle color scheme, but the four colors are evenly spaced on the color wheel.



15782589



12640201



12180978



15585254

Rectangle

The Rectangle color scheme consists of four colors that form a rectangle on the color wheel.



15782589



14146236



12180978



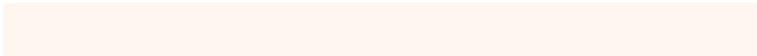
14079475

Sweetspot

The Sweet Spot groups the original color and five complimentary colors.



15782589



16774896



15777244



8419959



0



8421504

Same Dimension

The Same Dimension uses a secret algorithm to generate beautiful new colors.



15782589



16767165



15788989



7893356



12078080



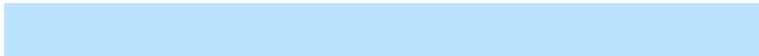
3675904

Inverse Universe

The Inverse Universe completely reimagines the original color for something new.



12442608



12444927



12436208



7107448



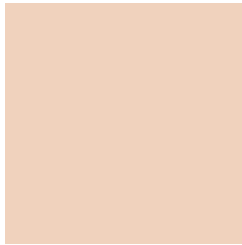
27832



8504

Previews

White Background



This preview shows how the Decimal color 15782589 looks on a white background.

Color Contrast Check

Large Text (above 18pt) WCAG AA × Fail

Any Text WCAG AA × Fail

Large Text (above 18pt) WCAG AAA × Fail

Any Text WCAG AAA × Fail

Black Background



This preview shows how the Decimal color 15782589 looks on a black background.

Color Contrast Check

Large Text (above 18pt) WCAG AA ✓ Pass

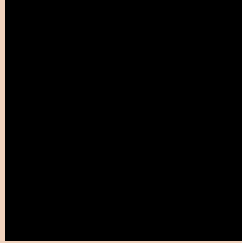
Any Text WCAG AA ✓ Pass

Large Text (above 18pt) WCAG AAA ✓ Pass

Any Text WCAG AAA ✓ Pass

If you want to check with other color combinations, try the [Color Contrast Checker](#).

Decimal 15782589 Background



This preview shows how black text looks on a background with the Decimal color 15782589.



This preview shows how white text looks on a background with the Decimal color 15782589.

Color Blindness Simulation

Color vision deficiency is a very complex topic, and I could not describe the different causes any better than Wikipedia does, so if you want to learn more, you should check out their [article about color blindness](#).

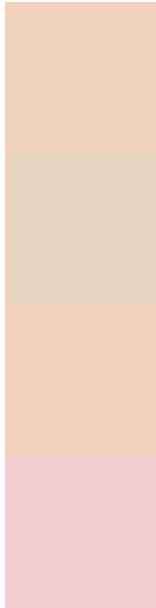
Dichromacy





Tritanopia
16043485

Trichromacy



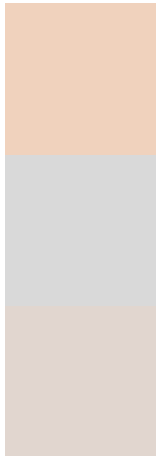
Original Color
15782589

Protanomaly
15127999

Deuteranomaly
16044477

Tritanomaly
15978449

Monochromacy



Original Color
15782589

Achromatopsia
14277081

Achromatomaly
14800591

CSS Examples

Text

The CSS property to change the color of the text to Decimal 15782589 is called "color". The color property can be set on classes, ids or directly on the HTML element.

This example shows how text in the color #F0D2BD looks like.

```
.text, #text, p{  
    color:#F0D2BD  
}
```

If you want to add a text shadow in that color use the text-shadow property, you can generate a text shadow directly with our [CSS Text Shadow Generator](#).

Here you see how black text with a 4 pixel #F0D2BD colored shadow looks like.

```
.shadow{ text-shadow: 4px 4px 2px #F0D2BD
}
```

Border

The CSS property to change the border of an element to Decimal 15782589 is called "border". The border property can be set on classes, ids or directly on the HTML element.

This example shows the color as border, it can be applied via the CSS property "border" or "border-color".

```
.border, #border, table{ border:4px solid
#F0D2BD }
```

If only the border color should be changed use the property `border-color`.

```
.border{ border-color:#F0D2BD }
```

If you want to add a box shadow in that color use:

Here you see how a box with a 4 pixel #F0D2BD colored shadow looks like.

```
.boxshadow{ -moz-box-shadow:4px 4px 4px  
4px #F0D2BD; -webkit-box-shadow:4px 4px  
4px 4px #F0D2BD; box-shadow:4px 4px 4px  
4px #F0D2BD }
```

Background

The CSS property to change the background color of an element to Decimal 15782589 is called "background". The background property can be set on classes, ids or directly on the HTML element.

```
.background, #background, body{  
background:#F0D2BD }
```

If only the background color should be changed can be used:

```
.background{ background-color:#F0D2BD }
```

This example shows the color as background, it is applied via the CSS property "background".

To optimize and compress your CSS code, you can use our [online CSS compressor and optimizer](#) based on csstidy. If you want to create a linear or radial gradient as background or border, check our [CSS Gradient Generator](#).

Hey! You found this booklet interesting? Support Converting Colors with the new Membership Option!

The pro membership hides all ads, plus gives you double the colors in the color bucket, and more awesome pro features!

[Learn more, Memberships starting at \\$2.50/m!](#)

**Follow me
on Twitter!**

@ConvertingColor