

# Converting Colors

Decimal(15784400)

Have a look what the booklet for  
Decimal(15784400) contains.

<b>Decimal(15784400)</b> .....	3
<i><b>Conversions</b></i> .....	4
<i><b>Details</b></i> .....	6
<i><b>Harmonies</b></i> .....	11
<i><b>Previews</b></i> .....	23
<i><b>Color Blindness Simulation</b></i> .....	26
<i><b>CSS Examples</b></i> .....	29

# **Color**

**Decimal(15784400)**

# Conversions

## Conversions Part 1

Format	Color
Hex	F0D9D0
RGB	240, 217, 208
RGB Percent	94%, 85%, 82%
CMY	0.0588, 0.1490, 0.1843
CMYK	0.00, 0.10, 0.13, 0.06
HSL	17°, 52%, 88%
HSV	17°, 13%, 94%
XYZ	72.1332, 72.7050, 69.9062
YIQ	222.8510, 16.5970, 2.0770

# Conversions

## Conversions Part 2

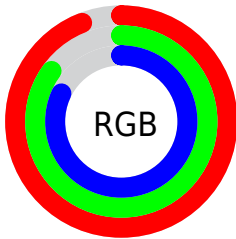
Format	Color
R <sub>Y</sub> B	240, 221, 208
Decimal	15784400
CIE Lab	88.31, 6.48, 7.30
CIE LCh	88, 9.760, 48.434
Yxy	72.7050, 0.3359, 0.3386
Android (android.graphics.Color)	4293974480 (0xFFFF0D9D0)
YUV	222.8510, -7.3215, 15.0397
Hunter-Lab	85.2673, 1.7873, 11.0783

# Details

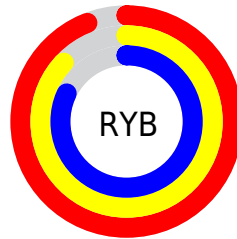
The Decimal color **15784400** is a light color, and the websafe version is hex **CCCCCC**. A complement of this color would be **13690864**, and the grayscale version is **14671839**.

A 20% lighter version of the original color is **16777215**, and **12100250** is the 20% darker color. If you saturate the color by 10%, you get **15780024**, and if you desaturate by 10%, it is **15788776**.

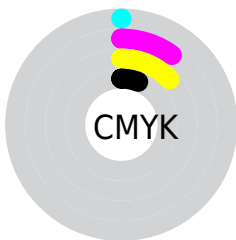
# Distribution



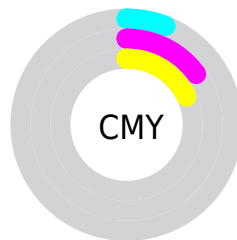
- Red (94%)
- Green (85%)
- Blue (82%)



- Red (94%)
- Yellow (87%)
- Blue (82%)



- Cyan (0%)
- Magenta (10%)
- Yellow (13%)
- Black (6%)



- Cyan (6%)
- Magenta (15%)
- Yellow (18%)

# Brightness & Saturation Gradients

These gradients show how the Decimal color 15784400 changes by changing the brightness by 10 percent. The first figure shows a shift by +10% for each color and the second figure -10%.

Similar to the brightness gradients but the following saturation gradients show a change of the Decimal color 15784400 by changing the saturation by 10% instead.



15784400

15784400

16777215

13942196

12100250

10324096

8613735

6903375

5324600

3746082

2364685

0

 15784400

 15784400

 15780024

 15788776

 15775392

 15793151

 15771016

 15794175

 15766640

 15762264

 15757632

 15753256

 15748880

 15745792

# Harmonies

## Analogous

The Analogous color harmony consists of three colors that are next to each other on the color wheel.



15915224



15784400



15326412

# Triad

The Triadic color harmony groups three colors that are evenly spaced from another and form a triangle on the color wheel.



15784400



13362138



14408943

# Complementary

The Complementary color scheme is a pair of colors which are on the opposite of each other on the color wheel.



15784400



13690864

# Split Complementary

Split-complementary colors differ from the complementary color scheme. The scheme consists of three colors, the original color and two neighbors of the complement color.



13688815



15784400



13100003

# Square

The Square scheme is like the rectangle color scheme, but the four colors are evenly spaced on the color wheel.



15784400



13951441



13230827



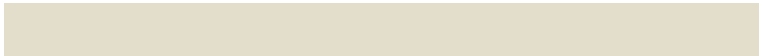
15129322

# Rectangle

The Rectangle color scheme consists of four colors that form a rectangle on the color wheel.



15784400



14933707



13230827



14147056



# Sweetspot

The Sweet Spot groups the original color and five complimentary colors.



15784400



16775413



15782119



8420217



0



8421504

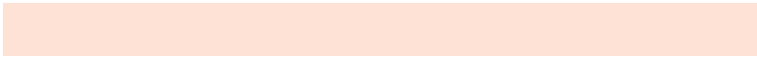


# Same Dimension

The Same Dimension uses a secret algorithm to generate beautiful new colors.



15784400



16769750



15788496



7892844



12071936



3674112

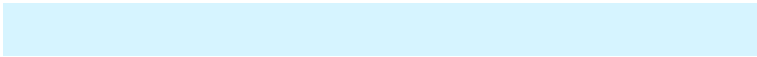


# Inverse Universe

The Inverse Universe completely reimagines the original color for something new.



13690864



14087423



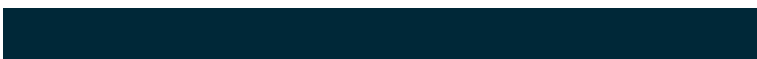
13686768



7107704



33976

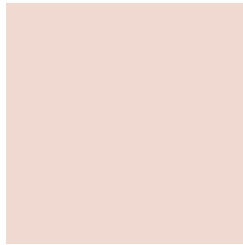


10296



# Previews

## White Background



This preview shows how the Decimal color 15784400 looks on a white background.

## Color Contrast Check

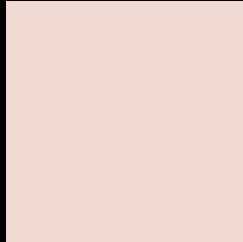
Large Text (above 18pt) WCAG AA × Fail

Any Text WCAG AA × Fail

Large Text (above 18pt) WCAG AAA × Fail

Any Text WCAG AAA × Fail

# Black Background



This preview shows how the Decimal color 15784400 looks on a black background.

## Color Contrast Check

Large Text (above 18pt) WCAG AA ✓ Pass

Any Text WCAG AA ✓ Pass

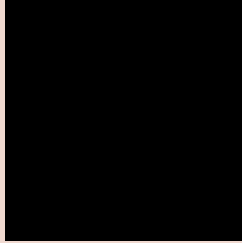
Large Text (above 18pt) WCAG AAA ✓ Pass

Any Text WCAG AAA ✓ Pass

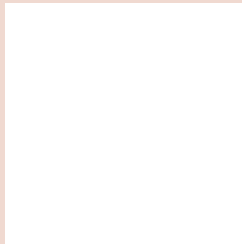
If you want to check with other color combinations, try the [Color Contrast Checker](#).



## Decimal 15784400 Background



This preview shows how black text looks on a background with the Decimal color 15784400.

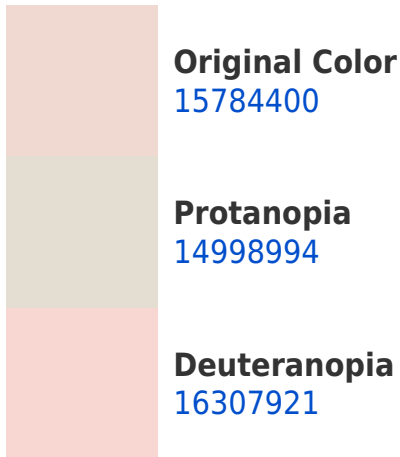


This preview shows how white text looks on a background with the Decimal color 15784400.

# Color Blindness Simulation

Color vision deficiency is a very complex topic, and I could not describe the different causes any better than Wikipedia does, so if you want to learn more, you should check out their [article about color blindness](#).

## Dichromacy





**Tritanopia**  
15980262

# Trichromacy



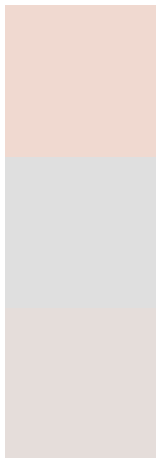
**Original Color**  
15784400

**Protanomaly**  
15260881

**Deuteranomaly**  
16111569

**Tritanomaly**  
15914974

# Monochromacy



**Original Color**  
15784400

**Achromatopsia**  
14671839

**Achromatomaly**  
15064538

# CSS Examples

## Text

The CSS property to change the color of the text to Decimal 15784400 is called "color". The color property can be set on classes, ids or directly on the HTML element.

This example shows how text in the color #F0D9D0 looks like.

```
.text, #text, p{  
    color:#F0D9D0  
}
```

If you want to add a text shadow in that color use the text-shadow property, you can generate a text shadow directly with our [CSS Text Shadow Generator](#).

Here you see how black text with a 4 pixel #F0D9D0 colored shadow looks like.

```
.shadow{ text-shadow: 4px 4px 2px #F0D9D0
}
```

## Border

The CSS property to change the border of an element to Decimal 15784400 is called "border". The border property can be set on classes, ids or directly on the HTML element.

This example shows the color as border, it can be applied via the CSS property "border" or "border-color".

```
.border, #border, table{ border:4px solid
#F0D9D0 }
```

If only the border color should be changed use the property `border-color`.

```
.border{ border-color:#F0D9D0 }
```

If you want to add a box shadow in that color use:

Here you see how a box with a 4 pixel #F0D9D0 colored shadow looks like.

```
.boxshadow{ -moz-box-shadow:4px 4px 4px  
4px #F0D9D0; -webkit-box-shadow:4px 4px  
4px 4px #F0D9D0; box-shadow:4px 4px 4px  
4px #F0D9D0 }
```

# Background

The CSS property to change the background color of an element to Decimal 15784400 is called "background". The background property can be set on classes, ids or directly on the HTML element.

```
.background, #background, body{  
background:#F0D9D0 }
```

If only the background color should be changed can be used:

```
.background{ background-color:#F0D9D0 }
```

This example shows the color as background, it is applied via the CSS property "background".

To optimize and compress your CSS code, you can use our [online CSS compressor and optimizer](#) based on csstidy. If you want to create a linear or radial gradient as background or border, check our [CSS Gradient Generator](#).



Hey! You found this booklet interesting? Support Converting Colors with the new Membership Option!

The pro membership hides all ads, plus gives you double the colors in the color bucket, and more awesome pro features!

**[Learn more, Memberships starting at \\$2.50/m!](#)**

**Follow me  
on Twitter!**

@ConvertingColor