

Converting Colors

Decimal(15810940)

Have a look what the booklet for
Decimal(15810940) contains.

Decimal(15810940)	3
<i>Conversions</i>	4
<i>Details</i>	6
<i>Harmonies</i>	11
<i>Previews</i>	23
<i>Color Blindness Simulation</i>	26
<i>CSS Examples</i>	29

Color

Decimal(15810940)

Conversions

Conversions Part 1

Format	Color
Hex	F1417C
RGB	241, 65, 124
RGB Percent	95%, 25%, 49%
CMY	0.0549, 0.7451, 0.5137
CMYK	0.00, 0.73, 0.49, 0.05
HSL	340°, 86%, 60%
HSV	340°, 73%, 95%
XYZ	41.8040, 23.9366, 21.4857
YIQ	124.3500, 85.9570, 55.6610

Conversions

Conversions Part 2

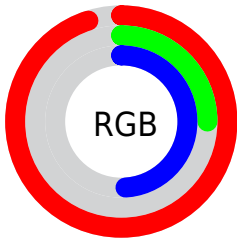
Format	Color
R_{YB}	241, 65, 124
Decimal	15810940
CIE _{Lab}	56.02, 69.80, 7.74
CIE _{LCh}	56, 70.223, 6.330
Yxy	23.9366, 0.4793, 0.2744
Android (android.graphics.Color)	4294001020 (0xFFFF1417C)
YUV	124.3500, -0.1725, 102.3021
Hunter-Lab	48.9250, 66.9005, 8.2100

Details

The Decimal color **15810940** is a dark color, and the websafe version is hex **CC3366**. The color can be described as middle washed rose. A complement of this color would be **4321718**, and the grayscale version is **8158332**.

A 20% lighter version of the original color is **16744112**, and **11731020** is the 20% darker color. If you saturate the color by 10%, you get **15804780**, and if you desaturate by 10%, it is **15817100**.

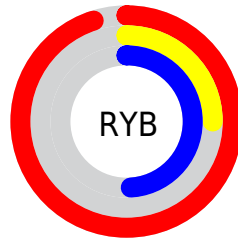
Distribution



Red (95%)

Green (25%)

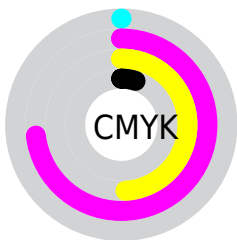
Blue (49%)



Red (95%)

Yellow (25%)

Blue (49%)

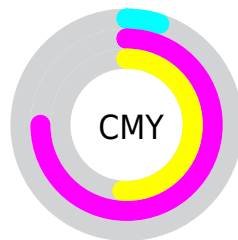


Cyan (0%)

Magenta (73%)

Yellow (49%)

Black (5%)



Cyan (5%)

Magenta (75%)

Yellow (51%)

Brightness & Saturation Gradients

These gradients show how the Decimal color 15810940 changes by changing the brightness by 10 percent. The first figure shows a shift by +10% for each color and the second figure -10%.

Similar to the brightness gradients but the following saturation gradients show a change of the Decimal color 15810940 by changing the saturation by 10% instead.

 15810940

 15810940

16777215

 13769059

 16744112

 11731020

 16751564

 9699381

 16759016

 7733281

 16766719

 5832712

 16774399

 3866627

 1376256

 0

 15810940

 15810940

 15804780

 15817100

 15798620

 15823260

 15794257

 15829420

 15835580

 15841996

 15848156

 15854316

 15859708

 15859711

Harmonies

Analogous

The Analogous color harmony consists of three colors that are next to each other on the color wheel.



14176441



15810940



15291457

Triad

The Triadic color harmony groups three colors that are evenly spaced from another and form a triangle on the color wheel.



15810940



5609229



39670

Complementary

The Complementary color scheme is a pair of colors which are on the opposite of each other on the color wheel.



15810940



4321718

Split Complementary

Split-complementary colors differ from the complementary color scheme. The scheme consists of three colors, the original color and two neighbors of the complement color.



41421



15810940



40530

Square

The Square scheme is like the rectangle color scheme, but the four colors are evenly spaced on the color wheel.



15810940



9865216



41618



35583

Rectangle

The Rectangle color scheme consists of four colors that form a rectangle on the color wheel.



15810940



13985562



41618



40428

Sweetspot

The Sweet Spot groups the original color and five complimentary colors.



15810940



16762842



11747825



8412777



0



8421504

Same Dimension

The Same Dimension uses a secret algorithm to generate beautiful new colors.



15810940



16719722



15817537



7892080



12058686



3670035

Inverse Universe

The Inverse Universe completely reimagines the original color for something new.



15810940



16719722



4315121



7892080



12058686



3670035

Previews

White Background



This preview shows how the Decimal color 15810940 looks on a white background.

Color Contrast Check

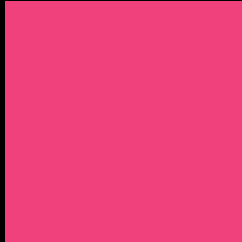
Large Text (above 18pt) WCAG AA ✓ Pass

Any Text WCAG AA × Fail

Large Text (above 18pt) WCAG AAA × Fail

Any Text WCAG AAA × Fail

Black Background



This preview shows how the Decimal color 15810940 looks on a black background.

Color Contrast Check

Large Text (above 18pt) WCAG AA ✓ Pass

Any Text WCAG AA ✓ Pass

Large Text (above 18pt) WCAG AAA ✓ Pass

Any Text WCAG AAA × Fail

If you want to check with other color combinations, try the [Color Contrast Checker](#).

Decimal 15810940 Background



This preview shows how black text looks on a background with the Decimal color 15810940.

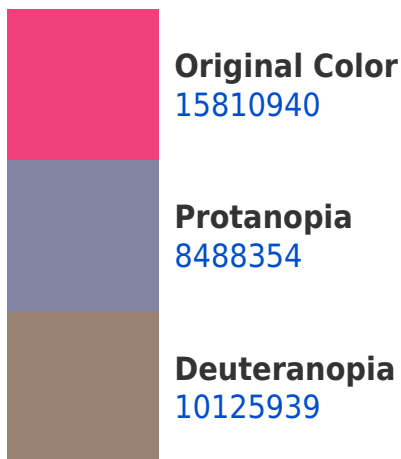


This preview shows how white text looks on a background with the Decimal color 15810940.

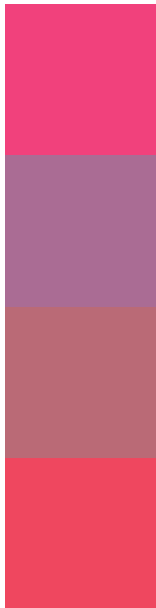
Color Blindness Simulation

Color vision deficiency is a very complex topic, and I could not describe the different causes any better than Wikipedia does, so if you want to learn more, you should check out their [article about color blindness](#).

Dichromacy



Trichromacy



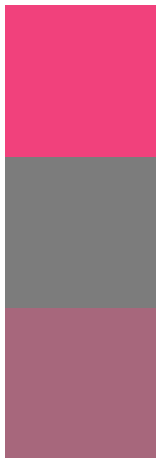
Original Color
15810940

Protanomaly
11168916

Deuteranomaly
12216950

Tritanomaly
15681375

Monochromacy



Original Color
15810940

Achromatopsia
8158332

Achromatomaly
10971004

CSS Examples

Text

The CSS property to change the color of the text to Decimal 15810940 is called "color". The color property can be set on classes, ids or directly on the HTML element.

This example shows how text in the color #F1417C looks like.

```
.text, #text, p{  
    color:#F1417C  
}
```

If you want to add a text shadow in that color use the text-shadow property, you can generate a text shadow directly with our [CSS Text Shadow Generator](#).

Here you see how black text with a 4 pixel #F1417C colored shadow looks like.

```
.shadow{ text-shadow: 4px 4px 2px #F1417C
}
```

Border

The CSS property to change the border of an element to Decimal 15810940 is called "border". The border property can be set on classes, ids or directly on the HTML element.

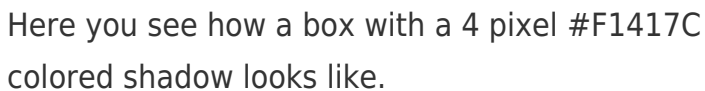
This example shows the color as border, it can be applied via the CSS property "border" or "border-color".

```
.border, #border, table{ border:4px solid
#F1417C }
```

If only the border color should be changed use the property border-color.

```
.border{ border-color:#F1417C }
```

If you want to add a box shadow in that color use:



Here you see how a box with a 4 pixel #F1417C colored shadow looks like.

```
.boxshadow{ -moz-box-shadow:4px 4px 4px  
4px #F1417C; -webkit-box-shadow:4px 4px  
4px 4px #F1417C; box-shadow:4px 4px 4px  
4px #F1417C }
```

Background

The CSS property to change the background color of an element to Decimal 15810940 is called "background". The background property can be set on classes, ids or directly on the HTML element.

```
.background, #background, body{  
background:#F1417C }
```

If only the background color should be changed can be used:

```
.background{ background-color:#F1417C }
```

This example shows the color as background, it is applied via the CSS property "background".

To optimize and compress your CSS code, you can use our [online CSS compressor and optimizer](#) based on csstidy. If you want to create a linear or radial gradient as background or border, check our [CSS Gradient Generator](#).

Hey! You found this booklet interesting? Support Converting Colors with the new Membership Option!

The pro membership hides all ads, plus gives you double the colors in the color bucket, and more awesome pro features!

[Learn more, Memberships starting at \\$2.50/m!](#)

**Follow me
on Twitter!**

@ConvertingColor