

Converting Colors

Decimal(15811953)

Have a look what the booklet for
Decimal(15811953) contains.

Decimal(15811953)	3
<i>Conversions</i>	4
<i>Details</i>	6
<i>Harmonies</i>	11
<i>Previews</i>	23
<i>Color Blindness Simulation</i>	26
<i>CSS Examples</i>	29

Color

Decimal(15811953)

Conversions

Conversions Part 1

Format	Color
Hex	F14571
RGB	241, 69, 113
RGB Percent	95%, 27%, 44%
CMY	0.0549, 0.7294, 0.5569
CMYK	0.00, 0.71, 0.53, 0.05
HSL	345°, 86%, 61%
HSV	345°, 71%, 95%
XYZ	41.3844, 24.1493, 18.1029
YIQ	125.4440, 88.3880, 50.1480

Conversions

Conversions Part 2

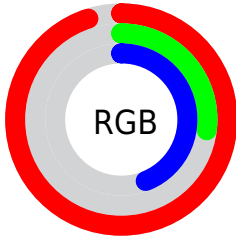
Format	Color
R_{YB}	241, 69, 113
Decimal	15811953
CIE _{Lab}	56.24, 67.60, 14.57
CIE _{LCh}	56, 69.155, 12.164
Yxy	24.1493, 0.4948, 0.2887
Android (android.graphics.Color)	4294002033 (0xFFFF14571)
YUV	125.4440, -6.1349, 101.3426
Hunter-Lab	49.1419, 64.3237, 12.5581

Details

The Decimal color **15811953** is a dark color, and the websafe version is hex **FF3366**. The color can be described as middle washed rose. A complement of this color would be **4583877**, and the grayscale version is **8224125**.

A 20% lighter version of the original color is **16744869**, and **11731010** is the 20% darker color. If you saturate the color by 10%, you get **15805791**, and if you desaturate by 10%, it is **15818115**.

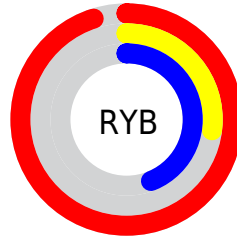
Distribution



Red (95%)

Green (27%)

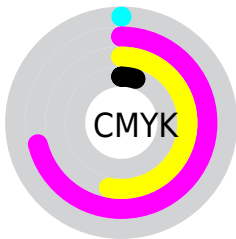
Blue (44%)



Red (95%)

Yellow (27%)

Blue (44%)

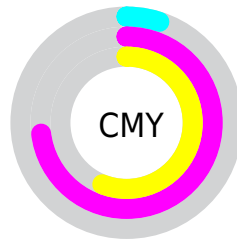


Cyan (0%)

Magenta (71%)

Yellow (53%)

Black (5%)



Cyan (5%)

Magenta (73%)

Yellow (56%)

Brightness & Saturation Gradients

These gradients show how the Decimal color 15811953 changes by changing the brightness by 10 percent. The first figure shows a shift by +10% for each color and the second figure -10%.

Similar to the brightness gradients but the following saturation gradients show a change of the Decimal color 15811953 by changing the saturation by 10% instead.

 15811953

 15811953

16777215

 13771097

 16744869

 11731010

 16752320

 9699372


 16759771

 7667736

 16767224

 5767169

 16774911

 3801090

 1245184

 0

 15811953

 15811953

 15805791

 15818115

 15799629

 15824277

 15794238

 15830439

 15836601

 15842763

 15849181

 15855343

 15859711

Harmonies

Analogous

The Analogous color harmony consists of three colors that are next to each other on the color wheel.



14634413



15811953



14900024

Triad

The Triadic color harmony groups three colors that are evenly spaced from another and form a triangle on the color wheel.



15811953



4561185



39162

Complementary

The Complementary color scheme is a pair of colors which are on the opposite of each other on the color wheel.



15811953



4583877

Split Complementary

Split-complementary colors differ from the complementary color scheme. The scheme consists of three colors, the original color and two neighbors of the complement color.



41175



15811953



41056

Square

The Square scheme is like the rectangle color scheme, but the four colors are evenly spaced on the color wheel.



15811953



9210880



41630



165629

Rectangle

The Rectangle color scheme consists of four colors that form a rectangle on the color wheel.



15811953



13463054



41630



39921

Sweetspot

The Sweet Spot groups the original color and five complimentary colors.



15811953



16763351



12797425



8413288



0



8421504

Same Dimension

The Same Dimension uses a secret algorithm to generate beautiful new colors.



15811953



16720988



15822149



7892079



12058671



3670030

Inverse Universe

The Inverse Universe completely reimagines the original color for something new.



15811953



16720988



4573681



7892079



12058671



3670030

Previews

White Background



This preview shows how the Decimal color 15811953 looks on a white background.

Color Contrast Check

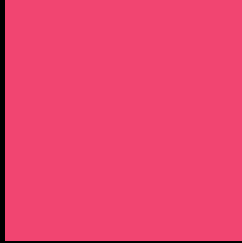
Large Text (above 18pt) WCAG AA ✓ Pass

Any Text WCAG AA × Fail

Large Text (above 18pt) WCAG AAA × Fail

Any Text WCAG AAA × Fail

Black Background



This preview shows how the Decimal color 15811953 looks on a black background.

Color Contrast Check

Large Text (above 18pt) WCAG AA ✓ Pass

Any Text WCAG AA ✓ Pass

Large Text (above 18pt) WCAG AAA ✓ Pass

Any Text WCAG AAA × Fail

If you want to check with other color combinations, try the [Color Contrast Checker](#).

Decimal 15811953 Background



This preview shows how black text looks on a background with the Decimal color 15811953.

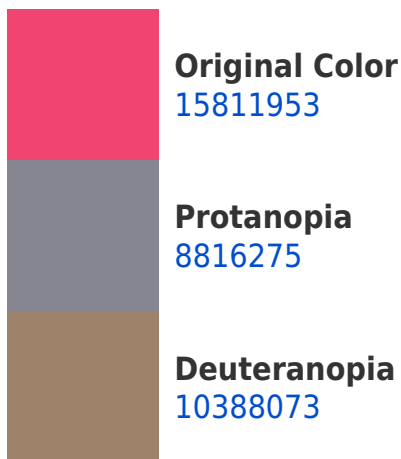


This preview shows how white text looks on a background with the Decimal color 15811953.

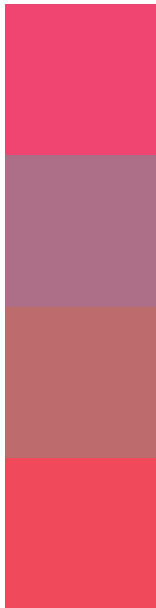
Color Blindness Simulation

Color vision deficiency is a very complex topic, and I could not describe the different causes any better than Wikipedia does, so if you want to learn more, you should check out their [article about color blindness](#).

Dichromacy



Trichromacy



Original Color
15811953

Protanomaly
11366023

Deuteranomaly
12348524

Tritanomaly
15747420

Monochromacy



Original Color
15811953

Achromatopsia
8224125

Achromatomaly
10971513

CSS Examples

Text

The CSS property to change the color of the text to Decimal 15811953 is called "color". The color property can be set on classes, ids or directly on the HTML element.

This example shows how text in the color #F14571 looks like.

```
.text, #text, p{  
  color:#F14571  
}
```

If you want to add a text shadow in that color use the text-shadow property, you can generate a text shadow directly with our [CSS Text Shadow Generator](#).

Here you see how black text with a 4 pixel #F14571 colored shadow looks like.

```
.shadow{ text-shadow: 4px 4px 2px #F14571
}
```

Border

The CSS property to change the border of an element to Decimal 15811953 is called "border". The border property can be set on classes, ids or directly on the HTML element.

This example shows the color as border, it can be applied via the CSS property "border" or "border-color".

```
.border, #border, table{ border:4px solid
#F14571 }
```

If only the border color should be changed use the property `border-color`.

```
.border{ border-color:#F14571 }
```

If you want to add a box shadow in that color use:

Here you see how a box with a 4 pixel #F14571 colored shadow looks like.

```
.boxshadow{ -moz-box-shadow:4px 4px 4px  
4px #F14571; -webkit-box-shadow:4px 4px  
4px 4px #F14571; box-shadow:4px 4px 4px  
4px #F14571 }
```

Background

The CSS property to change the background color of an element to Decimal 15811953 is called "background". The background property can be set on classes, ids or directly on the HTML element.

```
.background, #background, body{  
background:#F14571 }
```

If only the background color should be changed can be used:

```
.background{ background-color:#F14571 }
```

This example shows the color as background, it is applied via the CSS property "background".

To optimize and compress your CSS code, you can use our [online CSS compressor and optimizer](#) based on csstidy. If you want to create a linear or radial gradient as background or border, check our [CSS Gradient Generator](#).

Hey! You found this booklet interesting? Support Converting Colors with the new Membership Option!

The pro membership hides all ads, plus gives you double the colors in the color bucket, and more awesome pro features!

[Learn more, Memberships starting at \\$2.50/m!](#)

**Follow me
on Twitter!**

@ConvertingColor