

# Converting Colors

Decimal(15812466)

Have a look what the booklet for  
Decimal(15812466) contains.

<b>Decimal(15812466)</b> .....	3
<i><b>Conversions</b></i> .....	4
<i><b>Details</b></i> .....	6
<i><b>Harmonies</b></i> .....	11
<i><b>Previews</b></i> .....	23
<i><b>Color Blindness Simulation</b></i> .....	26
<i><b>CSS Examples</b></i> .....	29

# Color

**Decimal(15812466)**

# Conversions

## Conversions Part 1

Format	Color
Hex	F14772
RGB	241, 71, 114
RGB Percent	95%, 28%, 45%
CMY	0.0549, 0.7216, 0.5529
CMYK	0.00, 0.71, 0.53, 0.05
HSL	345°, 86%, 61%
HSV	345°, 71%, 95%
XYZ	41.5661, 24.4222, 18.4428
YIQ	126.7320, 87.5170, 49.4130

# Conversions

## Conversions Part 2

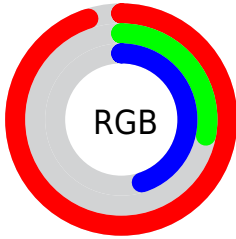
<b>Format</b>	<b>Color</b>
<b>R<sub>YB</sub></b>	241, 71, 114
Decimal	15812466
CIE <sub>Lab</sub>	56.51, 66.99, 14.36
CIE <sub>LCh</sub>	57, 68.508, 12.095
Yxy	24.4222, 0.4923, 0.2893
Android (android.graphics.Color)	4294002546 (0xFFFF14772)
YUV	126.7320, -6.2769, 100.2130
Hunter-Lab	49.4188, 63.6535, 12.4665

# Details

The Decimal color **15812466** is a dark color, and the websafe version is hex **FF3366**. The color can be described as middle washed rose. A complement of this color would be **4714950**, and the grayscale version is **8355711**.

A 20% lighter version of the original color is **16745126**, and **11731011** is the 20% darker color. If you saturate the color by 10%, you get **15806304**, and if you desaturate by 10%, it is **15818628**.

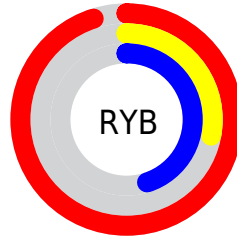
# Distribution



Red (95%)

Green (28%)

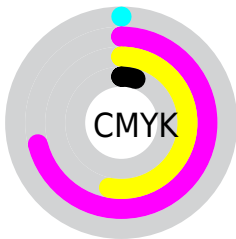
Blue (45%)



Red (95%)

Yellow (28%)

Blue (45%)

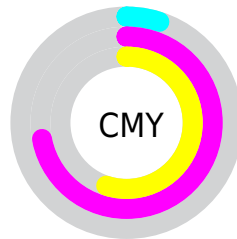


Cyan (0%)

Magenta (71%)

Yellow (53%)

Black (5%)



Cyan (5%)

Magenta (72%)

Yellow (55%)

# Brightness & Saturation Gradients

These gradients show how the Decimal color 15812466 changes by changing the brightness by 10 percent. The first figure shows a shift by +10% for each color and the second figure -10%.

Similar to the brightness gradients but the following saturation gradients show a change of the Decimal color 15812466 by changing the saturation by 10% instead.



 15812466

 15812466

16777215

 13771866

 16745126

 11731011

 16752577

 9699373

 16760028

 7733273

 16767737

 5767169

 16775423

 3866626

 1310720

 0

 15812466

 15812466

 15806304

 15818628

 15800142

 15824790

 15794237

 15830952

 15837114

 15843532

 15849694

 15855856

 15859711

# Harmonies

## Analogous

The Analogous color harmony consists of three colors that are next to each other on the color wheel.



14634926



15812466



14965818

# Triad

The Triadic color harmony groups three colors that are evenly spaced from another and form a triangle on the color wheel.



15812466



4692259



39161

# Complementary

The Complementary color scheme is a pair of colors which are on the opposite of each other on the color wheel.



15812466



4714950

# Split Complementary

Split-complementary colors differ from the complementary color scheme. The scheme consists of three colors, the original color and two neighbors of the complement color.



41431



15812466



41056

# Square

The Square scheme is like the rectangle color scheme, but the four colors are evenly spaced on the color wheel.



15812466



9276416



41887



1017853

# Rectangle

The Rectangle color scheme consists of four colors that form a rectangle on the color wheel.



15812466



13528850



41887



40177



# Sweetspot

The Sweet Spot groups the original color and five complimentary colors.



15812466



16763351



12863473



8413288



0



8421504



# Same Dimension

The Same Dimension uses a secret algorithm to generate beautiful new colors.



15812466



16721501



15822663



7892079



12058670



3670030



# Inverse Universe

The Inverse Universe completely reimagines the original color for something new.



15812466



16721501



4704753



7892079



12058670



3670030



# Previews

## White Background



This preview shows how the Decimal color 15812466 looks on a white background.

## Color Contrast Check

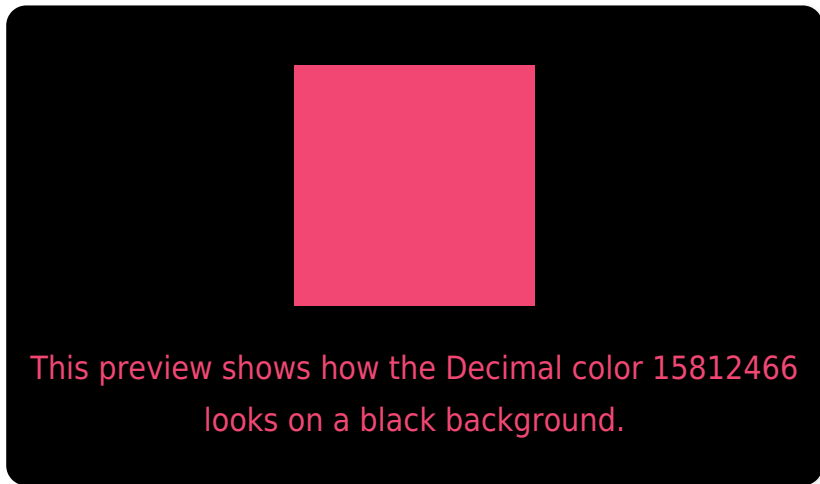
Large Text (above 18pt) WCAG AA ✓ Pass

Any Text WCAG AA × Fail

Large Text (above 18pt) WCAG AAA × Fail

Any Text WCAG AAA × Fail

# Black Background



## Color Contrast Check

Large Text (above 18pt) WCAG AA ✓ Pass

Any Text WCAG AA ✓ Pass

Large Text (above 18pt) WCAG AAA ✓ Pass

Any Text WCAG AAA × Fail

If you want to check with other color combinations, try the [Color Contrast Checker](#).



## Decimal 15812466 Background



This preview shows how black text looks on a background with the Decimal color 15812466.

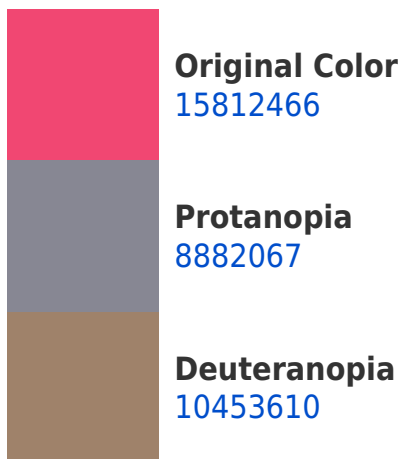



This preview shows how white text looks on a background with the Decimal color 15812466.

# Color Blindness Simulation

Color vision deficiency is a very complex topic, and I could not describe the different causes any better than Wikipedia does, so if you want to learn more, you should check out their [article about color blindness](#).

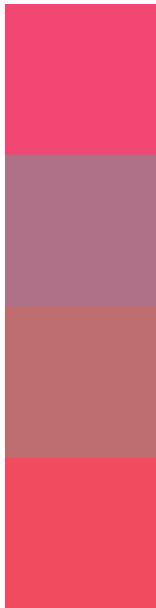
## Dichromacy





**Tritanopia**  
15683154

# Trichromacy



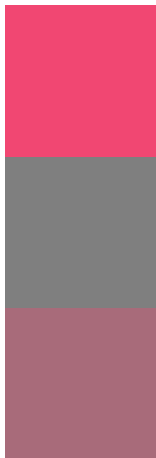
**Original Color**  
15812466

**Protanomaly**  
11432071

**Deuteranomaly**  
12414317

**Tritanomaly**  
15747934

# Monochromacy



**Original Color**  
15812466

**Achromatopsia**  
8355711

**Achromatomaly**  
11037562

# CSS Examples

## Text

The CSS property to change the color of the text to Decimal 15812466 is called "color". The color property can be set on classes, ids or directly on the HTML element.

This example shows how text in the color #F14772 looks like.

```
.text, #text, p{  
  color:#F14772  
}
```

If you want to add a text shadow in that color use the text-shadow property, you can generate a text shadow directly with our [CSS Text Shadow Generator](#).

Here you see how black text with a 4 pixel #F14772 colored shadow looks like.

```
.shadow{ text-shadow: 4px 4px 2px #F14772
}
```

## Border

The CSS property to change the border of an element to Decimal 15812466 is called "border". The border property can be set on classes, ids or directly on the HTML element.

This example shows the color as border, it can be applied via the CSS property "border" or "border-color".

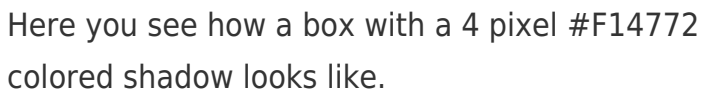
```
.border, #border, table{ border:4px solid
#F14772 }
```

If only the border color should be changed use the property `border-color`.

```
.border{ border-color:#F14772 }
```

If you want to add a box shadow in that color use:

Here you see how a box with a 4 pixel #F14772 colored shadow looks like.



```
.boxshadow{ -moz-box-shadow:4px 4px 4px  
4px #F14772; -webkit-box-shadow:4px 4px  
4px 4px #F14772; box-shadow:4px 4px 4px  
4px #F14772 }
```

# Background

The CSS property to change the background color of an element to Decimal 15812466 is called "background". The background property can be set on classes, ids or directly on the HTML element.

```
.background, #background, body{  
background:#F14772 }
```

If only the background color should be changed can be used:

```
.background{ background-color:#F14772 }
```

This example shows the color as background, it is applied via the CSS property "background".

To optimize and compress your CSS code, you can use our [online CSS compressor and optimizer](#) based on csstidy. If you want to create a linear or radial gradient as background or border, check our [CSS Gradient Generator](#).



Hey! You found this booklet interesting? Support Converting Colors with the new Membership Option!

The pro membership hides all ads, plus gives you double the colors in the color bucket, and more awesome pro features!

**[Learn more, Memberships starting at \\$2.50/m!](#)**

**Follow me  
on Twitter!**

@ConvertingColor