

Converting Colors

Decimal(15812718)

Have a look what the booklet for
Decimal(15812718) contains.

Decimal(15812718)	3
<i>Conversions</i>	4
<i>Details</i>	6
<i>Harmonies</i>	11
<i>Previews</i>	23
<i>Color Blindness Simulation</i>	26
<i>CSS Examples</i>	29

Color

Decimal(15812718)

Conversions

Conversions Part 1

Format	Color
Hex	F1486E
RGB	241, 72, 110
RGB Percent	95%, 28%, 43%
CMY	0.0549, 0.7176, 0.5686
CMYK	0.00, 0.70, 0.54, 0.05
HSL	347°, 86%, 61%
HSV	347°, 70%, 95%
XYZ	41.4075, 24.4613, 17.2909
YIQ	126.8630, 88.5260, 47.6460

Conversions

Conversions Part 2

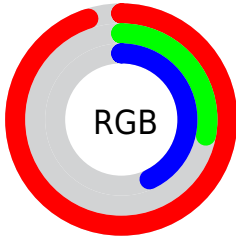
Format	Color
R_{YB}	241, 72, 110
Decimal	15812718
CIE _{Lab}	56.55, 66.34, 16.78
CIE _{LCh}	57, 68.425, 14.191
Yxy	24.4613, 0.4979, 0.2941
Android (android.graphics.Color)	4294002798 (0xFFFF1486E)
YUV	126.8630, -8.3135, 100.0981
Hunter-Lab	49.4584, 62.8914, 13.8927

Details

The Decimal color **15812718** is a dark color, and the websafe version is hex **FF3366**. The color can be described as middle washed rose. A complement of this color would be **4780491**, and the grayscale version is **8355711**.

A 20% lighter version of the original color is **16745377**, and **11731007** is the 20% darker color. If you saturate the color by 10%, you get **15806555**, and if you desaturate by 10%, it is **15818881**.

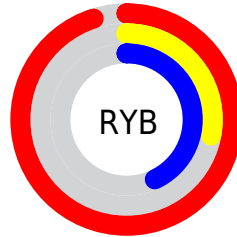
Distribution



Red (95%)

Green (28%)

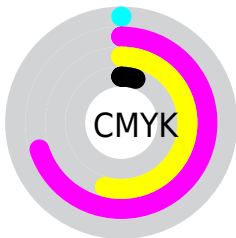
Blue (43%)



Red (95%)

Yellow (28%)

Blue (43%)

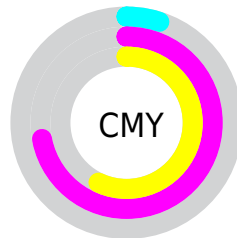


Cyan (0%)

Magenta (70%)

Yellow (54%)

Black (5%)



Cyan (5%)

Magenta (72%)

Yellow (57%)

Brightness & Saturation Gradients

These gradients show how the Decimal color 15812718 changes by changing the brightness by 10 percent. The first figure shows a shift by +10% for each color and the second figure -10%.

Similar to the brightness gradients but the following saturation gradients show a change of the Decimal color 15812718 by changing the saturation by 10% instead.

 15812718

 15812718

16777215

 13772374

 16745377

 11731007

 16752828

 9699369

 16760280

 7667734

 16767988

 5767169

 16775423

 3866626

 1245184

 0

 15812718

 15812718

 15806555

 15818881

 15800393

 15825043

 15794230

 15831206

 15837369

 15843787

 15849950

 15856113

 15859711

Harmonies

Analogous

The Analogous color harmony consists of three colors that are next to each other on the color wheel.



14831274



15812718



14835254

Triad

The Triadic color harmony groups three colors that are evenly spaced from another and form a triangle on the color wheel.



15812718



4299304



38907

Complementary

The Complementary color scheme is a pair of colors which are on the opposite of each other on the color wheel.



15812718



4780491

Split Complementary

Split-complementary colors differ from the complementary color scheme. The scheme consists of three colors, the original color and two neighbors of the complement color.



41178



15812718



41317

Square

The Square scheme is like the rectangle color scheme, but the four colors are evenly spaced on the color wheel.



15812718



9014784



41891



3180028

Rectangle

The Rectangle color scheme consists of four colors that form a rectangle on the color wheel.



15812718



13332749



41891



39923

Sweetspot

The Sweet Spot groups the original color and five complimentary colors.



15812718



16763349



13256945



8413287



0



8421504

Same Dimension

The Same Dimension uses a secret algorithm to generate beautiful new colors.



15812718



16722265



15824200



7892079



12058665



3670029

Inverse Universe

The Inverse Universe completely reimagines the original color for something new.



15812718



16722265



4769009



7892079



12058665



3670029

Previews

White Background



This preview shows how the Decimal color 15812718 looks on a white background.

Color Contrast Check

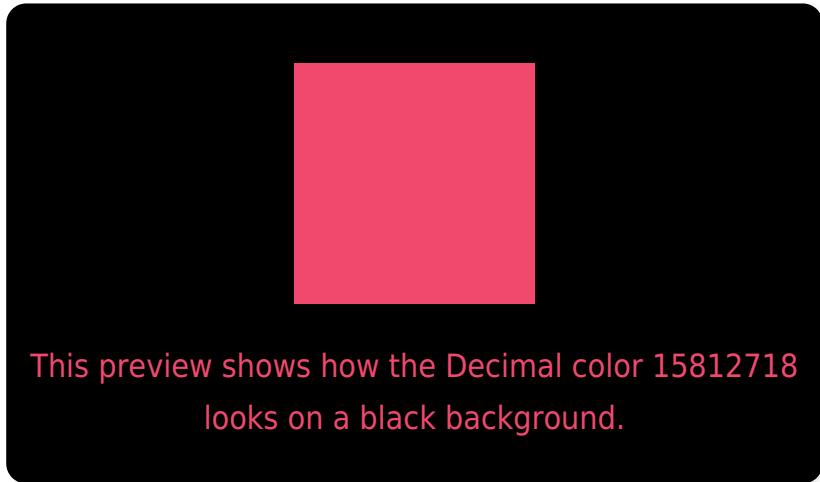
Large Text (above 18pt) WCAG AA ✓ Pass

Any Text WCAG AA × Fail

Large Text (above 18pt) WCAG AAA × Fail

Any Text WCAG AAA × Fail

Black Background



Color Contrast Check

Large Text (above 18pt) WCAG AA ✓ Pass

Any Text WCAG AA ✓ Pass

Large Text (above 18pt) WCAG AAA ✓ Pass

Any Text WCAG AAA × Fail

If you want to check with other color combinations, try the [Color Contrast Checker](#).

Decimal 15812718 Background



This preview shows how black text looks on a background with the Decimal color 15812718.

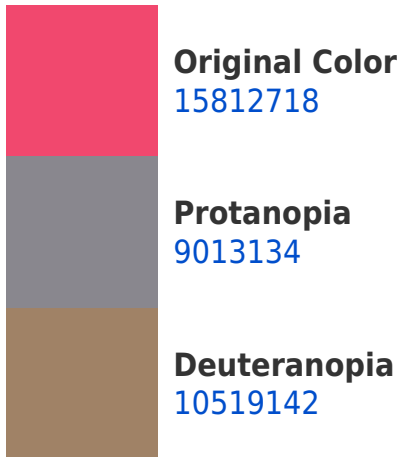


This preview shows how white text looks on a background with the Decimal color 15812718.

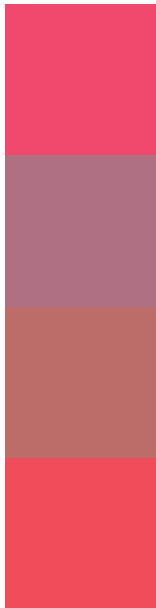
Color Blindness Simulation

Color vision deficiency is a very complex topic, and I could not describe the different causes any better than Wikipedia does, so if you want to learn more, you should check out their [article about color blindness](#).

Dichromacy



Trichromacy



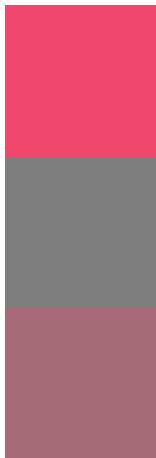
Original Color
15812718

Protanomaly
11497602

Deuteranomaly
12414313

Tritanomaly
15748188

Monochromacy



Original Color
15812718

Achromatopsia
8355711

Achromatomaly
11037561

CSS Examples

Text

The CSS property to change the color of the text to Decimal 15812718 is called "color". The color property can be set on classes, ids or directly on the HTML element.

This example shows how text in the color #F1486E looks like.

```
.text, #text, p{  
    color:#F1486E  
}
```

If you want to add a text shadow in that color use the text-shadow property, you can generate a text shadow directly with our [CSS Text Shadow Generator](#).

Here you see how black text with a 4 pixel #F1486E colored shadow looks like.

```
.shadow{ text-shadow: 4px 4px 2px #F1486E
}
```

Border

The CSS property to change the border of an element to Decimal 15812718 is called "border". The border property can be set on classes, ids or directly on the HTML element.

This example shows the color as border, it can be applied via the CSS property "border" or "border-color".

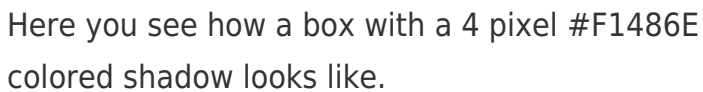
```
.border, #border, table{ border:4px solid
#F1486E }
```

If only the border color should be changed use the property `border-color`.

```
.border{ border-color:#F1486E }
```

If you want to add a box shadow in that color use:

Here you see how a box with a 4 pixel #F1486E colored shadow looks like.

A rectangular box with a red border and a red shadow. The box is white with a red border and a red shadow. The shadow is a 4px offset to the right and bottom of the box.

```
.boxshadow{ -moz-box-shadow:4px 4px 4px  
4px #F1486E; -webkit-box-shadow:4px 4px  
4px 4px #F1486E; box-shadow:4px 4px 4px  
4px #F1486E }
```

Background

The CSS property to change the background color of an element to Decimal 15812718 is called "background". The background property can be set on classes, ids or directly on the HTML element.

```
.background, #background, body{  
background:#F1486E }
```

If only the background color should be changed can be used:

```
.background{ background-color:#F1486E }
```

This example shows the color as background, it is applied via the CSS property "background".

To optimize and compress your CSS code, you can use our [online CSS compressor and optimizer](#) based on csstidy. If you want to create a linear or radial gradient as background or border, check our [CSS Gradient Generator](#).

Hey! You found this booklet interesting? Support Converting Colors with the new Membership Option!

The pro membership hides all ads, plus gives you double the colors in the color bucket, and more awesome pro features!

[Learn more, Memberships starting at \\$2.50/m!](#)

**Follow me
on Twitter!**

@ConvertingColor