

Converting Colors

Decimal(15818103)

Have a look what the booklet for
Decimal(15818103) contains.

Decimal(15818103)	3
<i>Conversions</i>	4
<i>Details</i>	6
<i>Harmonies</i>	11
<i>Previews</i>	23
<i>Color Blindness Simulation</i>	26
<i>CSS Examples</i>	29

Color

Decimal(15818103)

Conversions

Conversions Part 1

Format	Color
Hex	F15D77
RGB	241, 93, 119
RGB Percent	95%, 36%, 47%
CMY	0.0549, 0.6353, 0.5333
CMYK	0.00, 0.61, 0.51, 0.05
HSL	349°, 84%, 65%
HSV	349°, 61%, 95%
XYZ	43.5198, 27.8614, 20.5368
YIQ	140.2160, 79.8620, 39.4620

Conversions

Conversions Part 2

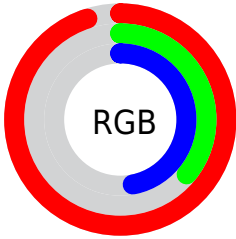
Format	Color
R _Y B	241, 93, 119
Decimal	15818103
CIE Lab	59.76, 58.81, 15.93
CIE LCh	60, 60.930, 15.155
Yxy	27.8614, 0.4735, 0.3031
Android (android.graphics.Color)	4294008183 (0xFFFF15D77)
YUV	140.2160, -10.4595, 88.3876
Hunter-Lab	52.7839, 54.7996, 13.8806

Details

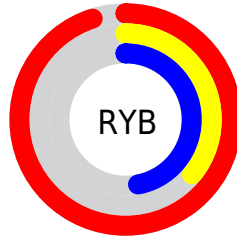
The Decimal color **15818103** is a light color, and the websafe version is hex **FF6699**. The color can be described as light muted rose. A complement of this color would be **6156759**, and the grayscale version is **9211020**.

A 20% lighter version of the original color is **16749995**, and **11804487** is the 20% darker color. If you saturate the color by 10%, you get **15811939**, and if you desaturate by 10%, it is **15824267**.

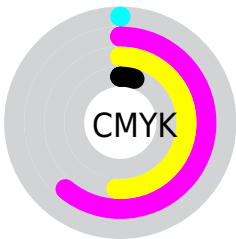
Distribution



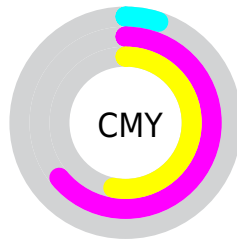
- Red (95%)
- Green (36%)
- Blue (47%)



- Red (95%)
- Yellow (36%)
- Blue (47%)



- Cyan (0%)
- Magenta (61%)
- Yellow (51%)
- Black (5%)



- Cyan (5%)
- Magenta (64%)
- Yellow (53%)

Brightness & Saturation Gradients

These gradients show how the Decimal color 15818103 changes by changing the brightness by 10 percent. The first figure shows a shift by +10% for each color and the second figure -10%.

Similar to the brightness gradients but the following saturation gradients show a change of the Decimal color 15818103 by changing the saturation by 10% instead.

 15818103

 15818103

16777215

 13779038

 16749995

 11804487

 16757446

 9764913

 16764898

 7864348

 16772351

 5963778

 4128771

 1835009

 0

 15818103

 15818103

■ 15811939

■ 15824267

■ 15805775

■ 15830431

■ 15799611

■ 15836595

■ 15794218

■ 15842758

■ 15848922

■ 15855342

■ 15859711

Harmonies

Analogous

The Analogous color harmony consists of three colors that are next to each other on the color wheel.



14901677



15818103



14904902

Triad

The Triadic color harmony groups three colors that are evenly spaced from another and form a triangle on the color wheel.



15818103



5480767



40696

Complementary

The Complementary color scheme is a pair of colors which are on the opposite of each other on the color wheel.



15818103



6156759

Split Complementary

Split-complementary colors differ from the complementary color scheme. The scheme consists of three colors, the original color and two neighbors of the complement color.



42971



15818103



43123

Square

The Square scheme is like the rectangle color scheme, but the four colors are evenly spaced on the color wheel.



15818103



9541144



43434



5869048

Rectangle

The Rectangle color scheme consists of four colors that form a rectangle on the color wheel.



15818103



13532202



43434



41457

Sweetspot

The Sweet Spot groups the original color and five complimentary colors.



15818103



16765401



14048753



8414056



0



8421504

Same Dimension

The Same Dimension uses a secret algorithm to generate beautiful new colors.



15818103



16728675



15830109



7892078



12058656



3670026

Inverse Universe

The Inverse Universe completely reimagines the original color for something new.



15818103



16728675



6144753



7892078



12058656



3670026

Previews

White Background



This preview shows how the Decimal color 15818103 looks on a white background.

Color Contrast Check

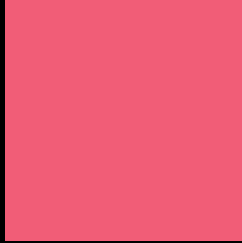
Large Text (above 18pt) WCAG AA ✓ Pass

Any Text WCAG AA × Fail

Large Text (above 18pt) WCAG AAA × Fail

Any Text WCAG AAA × Fail

Black Background



This preview shows how the Decimal color 15818103 looks on a black background.

Color Contrast Check

Large Text (above 18pt) WCAG AA ✓ Pass

Any Text WCAG AA ✓ Pass

Large Text (above 18pt) WCAG AAA ✓ Pass

Any Text WCAG AAA × Fail

If you want to check with other color combinations, try the [Color Contrast Checker](#).

Decimal 15818103 Background



This preview shows how black text looks on a background with the Decimal color 15818103.




This preview shows how white text looks on a background with the Decimal color 15818103.

Color Blindness Simulation

Color vision deficiency is a very complex topic, and I could not describe the different causes any better than Wikipedia does, so if you want to learn more, you should check out their [article about color blindness](#).

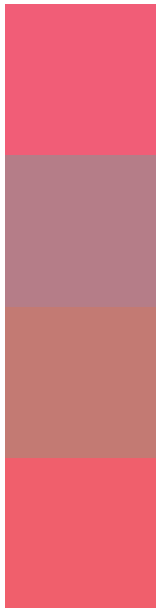
Dichromacy





Tritanopia
15753318

Trichromacy



Original Color
15818103

Protanomaly
11894152

Deuteranomaly
12810867

Tritanomaly
15753068

Monochromacy



Original Color
15818103

Achromatopsia
9211020

Achromatomaly
11631492

CSS Examples

Text

The CSS property to change the color of the text to Decimal 15818103 is called "color". The color property can be set on classes, ids or directly on the HTML element.

This example shows how text in the color #F15D77 looks like.

```
.text, #text, p{  
    color:#F15D77  
}
```

If you want to add a text shadow in that color use the text-shadow property, you can generate a text shadow directly with our [CSS Text Shadow Generator](#).

Here you see how black text with a 4 pixel #F15D77 colored shadow looks like.

```
.shadow{ text-shadow: 4px 4px 2px #F15D77  
}
```

Border

The CSS property to change the border of an element to Decimal 15818103 is called "border". The border property can be set on classes, ids or directly on the HTML element.

This example shows the color as border, it can be applied via the CSS property "border" or "border-color".

```
.border, #border, table{ border:4px solid  
#F15D77 }
```

If only the border color should be changed use the property `border-color`.

```
.border{ border-color:#F15D77 }
```

If you want to add a box shadow in that color use:

Here you see how a box with a 4 pixel #F15D77 colored shadow looks like.

```
.boxshadow{ -moz-box-shadow:4px 4px 4px  
4px #F15D77; -webkit-box-shadow:4px 4px  
4px 4px #F15D77; box-shadow:4px 4px 4px  
4px #F15D77 }
```

Background

The CSS property to change the background color of an element to Decimal 15818103 is called "background". The background property can be set on classes, ids or directly on the HTML element.

```
.background, #background, body{  
background:#F15D77 }
```

If only the background color should be changed can be used:

```
.background{ background-color:#F15D77 }
```

This example shows the color as background, it is applied via the CSS property "background".

To optimize and compress your CSS code, you can use our [online CSS compressor and optimizer](#) based on csstidy. If you want to create a linear or radial gradient as background or border, check our [CSS Gradient Generator](#).

Hey! You found this booklet interesting? Support Converting Colors with the new Membership Option!

The pro membership hides all ads, plus gives you double the colors in the color bucket, and more awesome pro features!

[Learn more, Memberships starting at \\$2.50/m!](#)

**Follow me
on Twitter!**

@ConvertingColor