

Converting Colors

Decimal(15831719)

Have a look what the booklet for
Decimal(15831719) contains.

Decimal(15831719)	3
<i>Conversions</i>	4
<i>Details</i>	6
<i>Harmonies</i>	11
<i>Previews</i>	23
<i>Color Blindness Simulation</i>	26
<i>CSS Examples</i>	29

Color

Decimal(15831719)

Conversions

Conversions Part 1

Format	Color
Hex	F192A7
RGB	241, 146, 167
RGB Percent	95%, 57%, 65%
CMY	0.0549, 0.4275, 0.3451
CMYK	0.00, 0.39, 0.31, 0.05
HSL	347°, 77%, 76%
HSV	347°, 39%, 95%
XYZ	53.5296, 42.0486, 41.8541
YIQ	176.7990, 49.8790, 26.6710

Conversions

Conversions Part 2

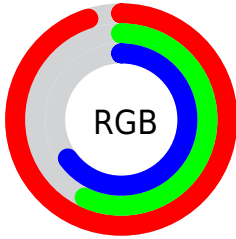
Format	Color
RYB	241, 146, 167
Decimal	15831719
CIELab	70.90, 38.32, 4.42
CIElCh	71, 38.575, 6.573
Yxy	42.0486, 0.3895, 0.3060
Android (android.graphics.Color)	4294021799 (0xFFFF192A7)
YUV	176.7990, -4.8309, 56.3043
Hunter-Lab	64.8449, 33.8736, 7.1227

Details

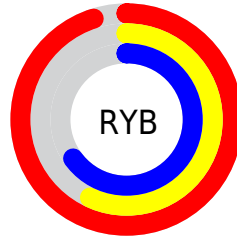
The Decimal color **15831719** is a light color, and the websafe version is hex **FF9999**. A complement of this color would be **9630172**, and the grayscale version is **11645361**.

A 20% lighter version of the original color is **16763358**, and **12017267** is the 20% darker color. If you saturate the color by 10%, you get **15825556**, and if you desaturate by 10%, it is **15837882**.

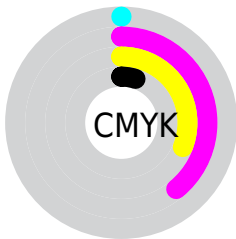
Distribution



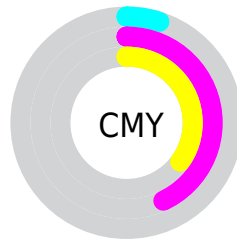
- Red (95%)
- Green (57%)
- Blue (65%)



- Red (95%)
- Yellow (57%)
- Blue (65%)



- Cyan (0%)
- Magenta (39%)
- Yellow (31%)
- Black (5%)



- Cyan (5%)
- Magenta (43%)
- Yellow (35%)

Brightness & Saturation Gradients

These gradients show how the Decimal color 15831719 changes by changing the brightness by 10 percent. The first figure shows a shift by +10% for each color and the second figure -10%.

Similar to the brightness gradients but the following saturation gradients show a change of the Decimal color 15831719 by changing the saturation by 10% instead.

 15831719

 15831719


16777215

 13924237

 16763358

 12017267

 16770811

 10110043

 8334147

 6491949

 4784153

 3276801

 0

 15831719

 15831719

■ 15825556

■ 15837882

■ 15819393

■ 15844045

■ 15813231

■ 15850207

■ 15807068

■ 15856370

■ 15800649

■ 15859711

■ 15794486

■ 15794229

Harmonies

Analogous

The Analogous color harmony consists of three colors that are next to each other on the color wheel.



14718666



15831719



15636357

Triad

The Triadic color harmony groups three colors that are evenly spaced from another and form a triangle on the color wheel.



15831719



9943156



4766189

Complementary

The Complementary color scheme is a pair of colors which are on the opposite of each other on the color wheel.



15831719



9630172

Split Complementary

Split-complementary colors differ from the complementary color scheme. The scheme consists of three colors, the original color and two neighbors of the complement color.



704470



15831719



7126672

Square

The Square scheme is like the rectangle color scheme, but the four colors are evenly spaced on the color wheel.



15831719



12430951



3784884



8892147

Rectangle

The Rectangle color scheme consists of four colors that form a rectangle on the color wheel.



15831719



14917236



3784884



3324903

Sweetspot

The Sweet Spot groups the original color and five complimentary colors.



15831719



16769255



14390001



8416882



0



8421504

Same Dimension

The Same Dimension uses a secret algorithm to generate beautiful new colors.



15831719



16746402



15838098



7892079



12058665



3670028

Inverse Universe

The Inverse Universe completely reimagines the original color for something new.



15831719



16746402



9623793



7892079



12058665



3670028

Previews

White Background



This preview shows how the Decimal color 15831719 looks on a white background.

Color Contrast Check

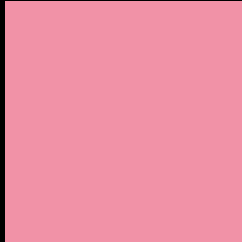
Large Text (above 18pt) WCAG AA × Fail

Any Text WCAG AA × Fail

Large Text (above 18pt) WCAG AAA × Fail

Any Text WCAG AAA × Fail

Black Background



This preview shows how the Decimal color 15831719 looks on a black background.

Color Contrast Check

Large Text (above 18pt) WCAG AA ✓ Pass

Any Text WCAG AA ✓ Pass

Large Text (above 18pt) WCAG AAA ✓ Pass

Any Text WCAG AAA ✓ Pass

If you want to check with other color combinations, try the [Color Contrast Checker](#).

Decimal 15831719 Background



This preview shows how black text looks on a background with the Decimal color 15831719.



This preview shows how white text looks on a background with the Decimal color 15831719.

Color Blindness Simulation

Color vision deficiency is a very complex topic, and I could not describe the different causes any better than Wikipedia does, so if you want to learn more, you should check out their [article about color blindness](#).

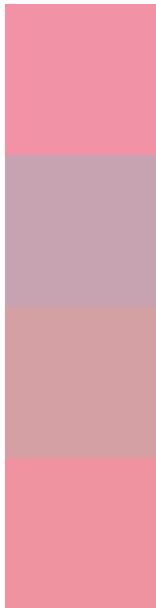
Dichromacy





Tritanopia
15766430

Trichromacy



Original Color
15831719

Protanomaly
13083569

Deuteranomaly
13934756

Tritanomaly
15766433

Monochromacy



Original Color
15831719

Achromatopsia
11645361

Achromatomaly
13149869

CSS Examples

Text

The CSS property to change the color of the text to Decimal 15831719 is called "color". The color property can be set on classes, ids or directly on the HTML element.

This example shows how text in the color #F192A7 looks like.

```
.text, #text, p{  
  color:#F192A7  
}
```

If you want to add a text shadow in that color use the text-shadow property, you can generate a text shadow directly with our [CSS Text Shadow Generator](#).

Here you see how black text with a 4 pixel #F192A7 colored shadow looks like.

```
.shadow{ text-shadow: 4px 4px 2px #F192A7
}
```

Border

The CSS property to change the border of an element to Decimal 15831719 is called "border". The border property can be set on classes, ids or directly on the HTML element.

This example shows the color as border, it can be applied via the CSS property "border" or "border-color".

```
.border, #border, table{ border:4px solid
#F192A7 }
```

If only the border color should be changed use the property `border-color`.

```
.border{ border-color:#F192A7 }
```

If you want to add a box shadow in that color use:

Here you see how a box with a 4 pixel #F192A7 colored shadow looks like.

```
.boxshadow{ -moz-box-shadow:4px 4px 4px  
4px #F192A7; -webkit-box-shadow:4px 4px  
4px 4px #F192A7; box-shadow:4px 4px 4px  
4px #F192A7 }
```

Background

The CSS property to change the background color of an element to Decimal 15831719 is called "background". The background property can be set on classes, ids or directly on the HTML element.

```
.background, #background, body{  
background:#F192A7 }
```

If only the background color should be changed can be used:

```
.background{ background-color:#F192A7 }
```

This example shows the color as background, it is applied via the CSS property "background".

To optimize and compress your CSS code, you can use our [online CSS compressor and optimizer](#) based on csstidy. If you want to create a linear or radial gradient as background or border, check our [CSS Gradient Generator](#).

Hey! You found this booklet interesting? Support Converting Colors with the new Membership Option!

The pro membership hides all ads, plus gives you double the colors in the color bucket, and more awesome pro features!

[Learn more, Memberships starting at \\$2.50/m!](#)

**Follow me
on Twitter!**

@ConvertingColor