

Converting Colors

Decimal(15835084)

Have a look what the booklet for
Decimal(15835084) contains.

Decimal(15835084)	3
<i>Conversions</i>	4
<i>Details</i>	6
<i>Harmonies</i>	11
<i>Previews</i>	23
<i>Color Blindness Simulation</i>	26
<i>CSS Examples</i>	29

Color

Decimal(15835084)

Conversions

Conversions Part 1

Format	Color
Hex	F19FCC
RGB	241, 159, 204
RGB Percent	95%, 62%, 80%
CMY	0.0549, 0.3765, 0.2000
CMYK	0.00, 0.34, 0.15, 0.05
HSL	327°, 75%, 78%
HSV	327°, 34%, 95%
XYZ	59.5728, 47.8567, 63.2242
YIQ	188.6480, 34.4270, 31.3790

Conversions

Conversions Part 2

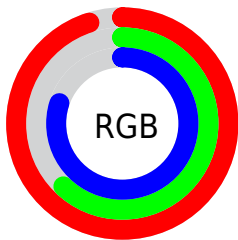
Format	Color
R _Y B	241, 159, 204
Decimal	15835084
CIE Lab	74.73, 36.80, -10.42
CIE LCh	75, 38.247, 344.197
Yxy	47.8567, 0.3491, 0.2804
Android (android.graphics.Color)	4294025164 (0xFFFF19FCC)
YUV	188.6480, 7.5685, 45.9127
Hunter-Lab	69.1785, 32.6523, -5.7618

Details

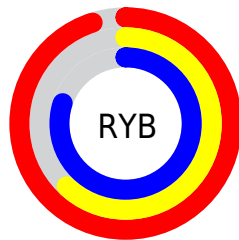
The Decimal color **15835084** is a light color, and the websafe version is hex **FF99CC**. A complement of this color would be **10482116**, and the grayscale version is **12434877**.

A 20% lighter version of the original color is **16766975**, and **12085910** is the 20% darker color. If you saturate the color by 10%, you get **15828929**, and if you desaturate by 10%, it is **15841239**.

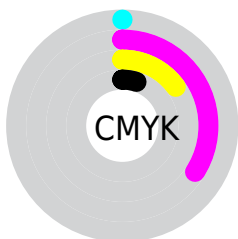
Distribution



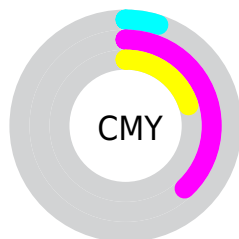
- Red (95%)
- Green (62%)
- Blue (80%)



- Red (95%)
- Yellow (62%)
- Blue (80%)



- Cyan (0%)
- Magenta (34%)
- Yellow (15%)
- Black (5%)



- Cyan (5%)
- Magenta (38%)
- Yellow (20%)

Brightness & Saturation Gradients

These gradients show how the Decimal color 15835084 changes by changing the brightness by 10 percent. The first figure shows a shift by +10% for each color and the second figure -10%.

Similar to the brightness gradients but the following saturation gradients show a change of the Decimal color 15835084 by changing the saturation by 10% instead.

 15835084

 15835084

16777215

 13927601

 16766975

 12085910

 16774143


 10244476

 8468579

 6692683

 5046836

 3407903

 1769476

 0

 15835084

 15835084

 15828929

 15841239

 15822774

 15847394

 15816619

 15853549

 15810465

 15859703

 15804310

 15859711

 15797899

 15794308

Harmonies

Analogous

The Analogous color harmony consists of three colors that are next to each other on the color wheel.



13740523



15835084



16620968

Triad

The Triadic color harmony groups three colors that are evenly spaced from another and form a triangle on the color wheel.



15835084



12565363



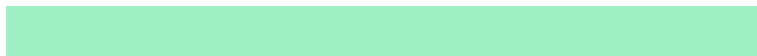
3393768

Complementary

The Complementary color scheme is a pair of colors which are on the opposite of each other on the color wheel.



15835084



10482116

Split Complementary

Split-complementary colors differ from the complementary color scheme. The scheme consists of three colors, the original color and two neighbors of the complement color.



4115400



15835084



9946244

Square

The Square scheme is like the rectangle color scheme, but the four colors are evenly spaced on the color wheel.



15835084



14724980



7129764



6734331

Rectangle

The Rectangle color scheme consists of four colors that form a rectangle on the color wheel.



15835084



16425362



7129764



3000798

Sweetspot

The Sweet Spot groups the original color and five complimentary colors.



15835084



16770803



12886001



8417401



0



8421504

Same Dimension

The Same Dimension uses a secret algorithm to generate beautiful new colors.



15835084



16750288



15835043



7892082



12058725



3670047

Inverse Universe

The Inverse Universe completely reimagines the original color for something new.



15835084



16750288



10482157



7892082



12058725



3670047

Previews

White Background



This preview shows how the Decimal color 15835084 looks on a white background.

Color Contrast Check

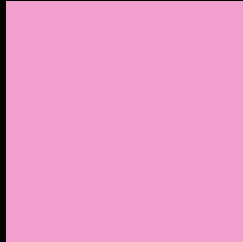
Large Text (above 18pt) WCAG AA × Fail

Any Text WCAG AA × Fail

Large Text (above 18pt) WCAG AAA × Fail

Any Text WCAG AAA × Fail

Black Background



This preview shows how the Decimal color 15835084 looks on a black background.

Color Contrast Check

Large Text (above 18pt) WCAG AA ✓ Pass

Any Text WCAG AA ✓ Pass

Large Text (above 18pt) WCAG AAA ✓ Pass

Any Text WCAG AAA ✓ Pass

If you want to check with other color combinations, try the [Color Contrast Checker](#).

Decimal 15835084 Background



This preview shows how black text looks on a background with the Decimal color 15835084.



This preview shows how white text looks on a background with the Decimal color 15835084.

Color Blindness Simulation

Color vision deficiency is a very complex topic, and I could not describe the different causes any better than Wikipedia does, so if you want to learn more, you should check out their [article about color blindness](#).


Dichromacy



Original Color
15835084

Protanopia
11646939

Deuteranopia
12825544



Tritanopia
15639728

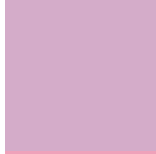
Trichromacy



Original Color
15835084



Protanomaly
13151958



Deuteranomaly
13937865



Tritanomaly
15704762

Monochromacy



Original Color
15835084



Achromatopsia
12434877



Achromatomaly
13677250

CSS Examples

Text

The CSS property to change the color of the text to Decimal 15835084 is called "color". The color property can be set on classes, ids or directly on the HTML element.

This example shows how text in the color #F19FCC looks like.

```
.text, #text, p{  
  color:#F19FCC  
}
```

If you want to add a text shadow in that color use the text-shadow property, you can generate a text shadow directly with our [CSS Text Shadow Generator](#).

Here you see how black text with a 4 pixel #F19FCC colored shadow looks like.

```
.shadow{ text-shadow: 4px 4px 2px #F19FCC
}
```

Border

The CSS property to change the border of an element to Decimal 15835084 is called "border". The border property can be set on classes, ids or directly on the HTML element.

This example shows the color as border, it can be applied via the CSS property "border" or "border-color".

```
.border, #border, table{ border:4px solid
#F19FCC }
```

If only the border color should be changed use the property `border-color`.

```
.border{ border-color:#F19FCC }
```

If you want to add a box shadow in that color use:

Here you see how a box with a 4 pixel #F19FCC colored shadow looks like.

```
.boxshadow{ -moz-box-shadow:4px 4px 4px  
4px #F19FCC; -webkit-box-shadow:4px 4px  
4px 4px #F19FCC; box-shadow:4px 4px 4px  
4px #F19FCC }
```

Background

The CSS property to change the background color of an element to Decimal 15835084 is called "background". The background property can be set on classes, ids or directly on the HTML element.

```
.background, #background, body{  
background:#F19FCC }
```

If only the background color should be changed can be used:

```
.background{ background-color:#F19FCC }
```

This example shows the color as background, it is applied via the CSS property "background".

To optimize and compress your CSS code, you can use our [online CSS compressor and optimizer](#) based on csstidy. If you want to create a linear or radial gradient as background or border, check our [CSS Gradient Generator](#).

Hey! You found this booklet interesting? Support Converting Colors with the new Membership Option!

The pro membership hides all ads, plus gives you double the colors in the color bucket, and more awesome pro features!

[Learn more, Memberships starting at \\$2.50/m!](#)

**Follow me
on Twitter!**

@ConvertingColor