

Converting Colors

Decimal(15840971)

Have a look what the booklet for
Decimal(15840971) contains.

Decimal(15840971)	3
<i>Conversions</i>	4
<i>Details</i>	6
<i>Harmonies</i>	11
<i>Previews</i>	23
<i>Color Blindness Simulation</i>	26
<i>CSS Examples</i>	29

Color

Decimal(15840971)

Conversions

Conversions Part 1

Format	Color
Hex	F1B6CB
RGB	241, 182, 203
RGB Percent	95%, 71%, 80%
CMY	0.0549, 0.2863, 0.2039
CMYK	0.00, 0.24, 0.16, 0.05
HSL	339°, 68%, 83%
HSV	339°, 24%, 95%
XYZ	63.7831, 56.4685, 64.0377
YIQ	202.0350, 28.4230, 19.0390

Conversions

Conversions Part 2

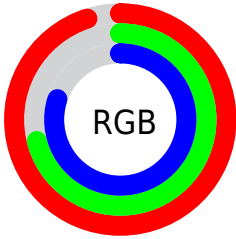
Format	Color
R _Y B	241, 182, 203
Decimal	15840971
CIE Lab	79.88, 24.47, -2.26
CIE LCh	80, 24.579, 354.731
Yxy	56.4685, 0.3461, 0.3064
Android (android.graphics.Color)	4294031051 (0xFFFF1B6CB)
YUV	202.0350, 0.4757, 34.1723
Hunter-Lab	75.1455, 20.0051, 2.0760

Details

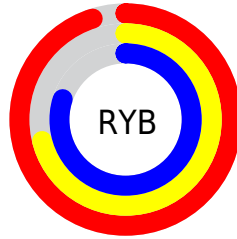
The Decimal color **15840971** is a light color, and the websafe version is hex **FFCCCC**. A complement of this color would be **11989468**, and the grayscale version is **13290186**.

A 20% lighter version of the original color is **16772863**, and **12091797** is the 20% darker color. If you saturate the color by 10%, you get **15834811**, and if you desaturate by 10%, it is **15847131**.

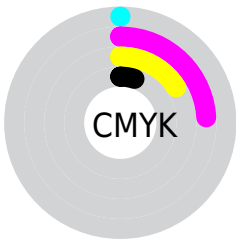
Distribution



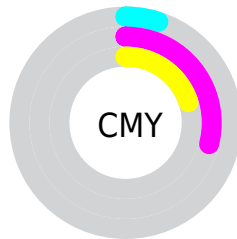
- Red (95%)
- Green (71%)
- Blue (80%)



- Red (95%)
- Yellow (71%)
- Blue (80%)



- Cyan (0%)
- Magenta (24%)
- Yellow (16%)
- Black (5%)



- Cyan (5%)
- Magenta (29%)
- Yellow (20%)

Brightness & Saturation Gradients

These gradients show how the Decimal color 15840971 changes by changing the brightness by 10 percent. The first figure shows a shift by +10% for each color and the second figure -10%.

Similar to the brightness gradients but the following saturation gradients show a change of the Decimal color 15840971 by changing the saturation by 10% instead.

15840971

15840971

16777215

13933488

16772863

12091797

10315643

8540002

6829899

5185588

3606815

2424838

0

 15840971

 15840971

 15834811

 15847131

 15828652

 15853290

 15822492

 15859450

 15816333

 15859711

 15809917

 15803758

 15797598

 15794262

Harmonies

Analogous

The Analogous color harmony consists of three colors that are next to each other on the color wheel.



14727905



15840971



16103348

Triad

The Triadic color harmony groups three colors that are evenly spaced from another and form a triangle on the color wheel.



15840971



12831388



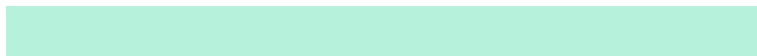
9293803

Complementary

The Complementary color scheme is a pair of colors which are on the opposite of each other on the color wheel.



15840971



11989468

Split Complementary

Split-complementary colors differ from the complementary color scheme. The scheme consists of three colors, the original color and two neighbors of the complement color.



8836056



15840971



11129003

Square

The Square scheme is like the rectangle color scheme, but the four colors are evenly spaced on the color wheel.



15840971



14402457



9622465



10930675

Rectangle

The Rectangle color scheme consists of four colors that form a rectangle on the color wheel.



15840971



15841959



9622465



8966629

Sweetspot

The Sweet Spot groups the original color and five complimentary colors.



15840971



16772596



14399217



8418681



0



8421504

Same Dimension

The Same Dimension uses a secret algorithm to generate beautiful new colors.



15840971



16758223



15842998



7892080



12058689



3670036

Inverse Universe

The Inverse Universe completely reimagines the original color for something new.



15840971



16758223



11987441



7892080



12058689



3670036

Previews

White Background



This preview shows how the Decimal color 15840971 looks on a white background.

Color Contrast Check

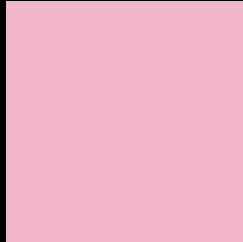
Large Text (above 18pt) WCAG AA × Fail

Any Text WCAG AA × Fail

Large Text (above 18pt) WCAG AAA × Fail

Any Text WCAG AAA × Fail

Black Background



This preview shows how the Decimal color 15840971 looks on a black background.

Color Contrast Check

Large Text (above 18pt) WCAG AA ✓ Pass

Any Text WCAG AA ✓ Pass

Large Text (above 18pt) WCAG AAA ✓ Pass

Any Text WCAG AAA ✓ Pass

If you want to check with other color combinations, try the [Color Contrast Checker](#).

Decimal 15840971 Background



This preview shows how black text looks on a background with the Decimal color 15840971.

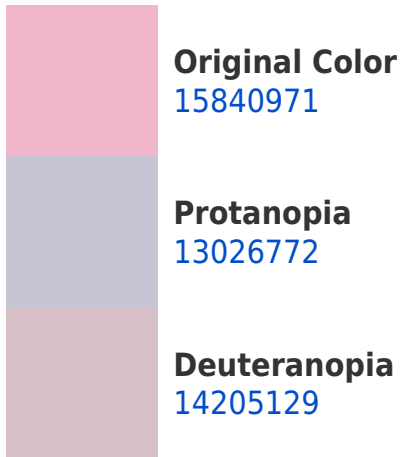


This preview shows how white text looks on a background with the Decimal color 15840971.

Color Blindness Simulation

Color vision deficiency is a very complex topic, and I could not describe the different causes any better than Wikipedia does, so if you want to learn more, you should check out their [article about color blindness](#).

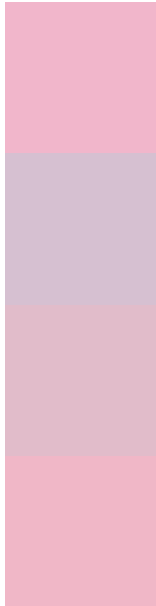
Dichromacy





Tritanopia
15775685

Trichromacy



Original Color
15840971

Protanomaly
14074065

Deuteranomaly
14793930

Tritanomaly
15775687

Monochromacy



Original Color
15840971

Achromatopsia
13290186

Achromatomaly
14205898

CSS Examples

Text

The CSS property to change the color of the text to Decimal 15840971 is called "color". The color property can be set on classes, ids or directly on the HTML element.

This example shows how text in the color #F1B6CB looks like.

```
.text, #text, p{  
  color:#F1B6CB  
}
```

If you want to add a text shadow in that color use the text-shadow property, you can generate a text shadow directly with our [CSS Text Shadow Generator](#).

Here you see how black text with a 4 pixel #F1B6CB colored shadow looks like.

```
.shadow{ text-shadow: 4px 4px 2px #F1B6CB
}
```

Border

The CSS property to change the border of an element to Decimal 15840971 is called "border". The border property can be set on classes, ids or directly on the HTML element.

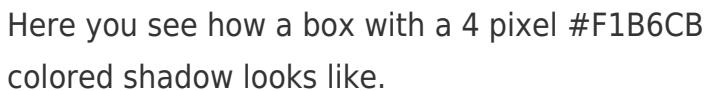
This example shows the color as border, it can be applied via the CSS property "border" or "border-color".

```
.border, #border, table{ border:4px solid
#F1B6CB }
```

If only the border color should be changed use the property `border-color`.

```
.border{ border-color:#F1B6CB }
```

If you want to add a box shadow in that color use:



Here you see how a box with a 4 pixel #F1B6CB colored shadow looks like.

```
.boxshadow{ -moz-box-shadow:4px 4px 4px  
4px #F1B6CB; -webkit-box-shadow:4px 4px  
4px 4px #F1B6CB; box-shadow:4px 4px 4px  
4px #F1B6CB }
```

Background

The CSS property to change the background color of an element to Decimal 15840971 is called "background". The background property can be set on classes, ids or directly on the HTML element.

```
.background, #background, body{  
background:#F1B6CB }
```

If only the background color should be changed can be used:

```
.background{ background-color:#F1B6CB }
```

This example shows the color as background, it is applied via the CSS property "background".

To optimize and compress your CSS code, you can use our [online CSS compressor and optimizer](#) based on csstidy. If you want to create a linear or radial gradient as background or border, check our [CSS Gradient Generator](#).

Hey! You found this booklet interesting? Support Converting Colors with the new Membership Option!

The pro membership hides all ads, plus gives you double the colors in the color bucket, and more awesome pro features!

[Learn more, Memberships starting at \\$2.50/m!](#)

**Follow me
on Twitter!**

@ConvertingColor