

Converting Colors

Decimal(15871348)

Have a look what the booklet for
Decimal(15871348) contains.

Decimal(15871348)	3
<i>Conversions</i>	4
<i>Details</i>	6
<i>Harmonies</i>	11
<i>Previews</i>	23
<i>Color Blindness Simulation</i>	26
<i>CSS Examples</i>	29

Color

Decimal(15871348)

Conversions

Conversions Part 1

Format	Color
Hex	F22D74
RGB	242, 45, 116
RGB Percent	95%, 18%, 45%
CMY	0.0510, 0.8235, 0.5451
CMYK	0.00, 0.81, 0.52, 0.05
HSL	338°, 88%, 56%
HSV	338°, 81%, 95%
XYZ	40.7087, 22.0150, 18.6267
YIQ	111.9970, 94.6210, 63.8450

Conversions

Conversions Part 2

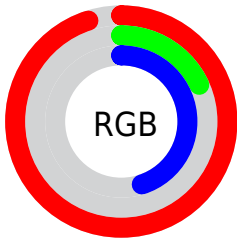
Format	Color
R_{YB}	242, 45, 116
Decimal	15871348
CIE _{Lab}	54.04, 74.99, 9.74
CIE _{LCh}	54, 75.615, 7.400
Yxy	22.0150, 0.5004, 0.2706
Android (android.graphics.Color)	4294061428 (0xFFFF22D74)
YUV	111.9970, 1.9735, 114.0126
Hunter-Lab	46.9201, 72.7596, 9.3067

Details

The Decimal color **15871348** is a dark color, and the websafe version is hex **FF0066**. The color can be described as middle washed rose. A complement of this color would be **3011243**, and the grayscale version is **7368816**.

A 20% lighter version of the original color is **16740520**, and **11731012** is the 20% darker color. If you saturate the color by 10%, you get **15865189**, and if you desaturate by 10%, it is **15877507**.

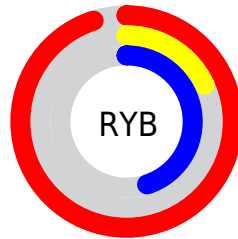
Distribution



Red (95%)

Green (18%)

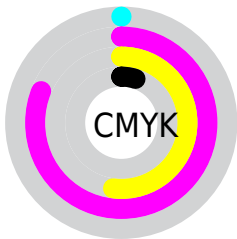
Blue (45%)



Red (95%)

Yellow (18%)

Blue (45%)

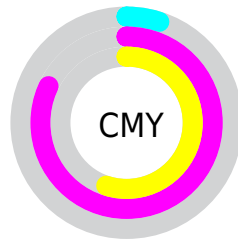


Cyan (0%)

Magenta (81%)

Yellow (52%)

Black (5%)



Cyan (5%)

Magenta (82%)

Yellow (55%)

Brightness & Saturation Gradients

These gradients show how the Decimal color 15871348 changes by changing the brightness by 10 percent. The first figure shows a shift by +10% for each color and the second figure -10%.

Similar to the brightness gradients but the following saturation gradients show a change of the Decimal color 15871348 by changing the saturation by 10% instead.

 15871348

 15871348

16777215

 13762652

 16740520

 11731012

 16748227

 9699375

 16755935

 7667739

 16763643

 5767171

 16771327

 3735554

 983040

 0

 15871348

 15871348

15865189

15877507

15859799

15883667

15890082

15896242

15902401

15908561

15914720

15921136

15925247

Harmonies

Analogous

The Analogous color harmony consists of three colors that are next to each other on the color wheel.



14303669



15871348



15157557

Triad

The Triadic color harmony groups three colors that are evenly spaced from another and form a triangle on the color wheel.



15871348



4559616



38394

Complementary

The Complementary color scheme is a pair of colors which are on the opposite of each other on the color wheel.



15871348



3011243

Split Complementary

Split-complementary colors differ from the complementary color scheme. The scheme consists of three colors, the original color and two neighbors of the complement color.



40400



15871348



39500

Square

The Square scheme is like the rectangle color scheme, but the four colors are evenly spaced on the color wheel.



15871348



9339904



40336



34047

Rectangle

The Rectangle color scheme consists of four colors that form a rectangle on the color wheel.



15871348



13721600



40336



39407

Sweetspot

The Sweet Spot groups the original color and five complimentary colors.



15871348



16761560



11152882



8412008



0



8421504

Same Dimension

The Same Dimension uses a secret algorithm to generate beautiful new colors.



15871348



16713055



15877933



7892080



12058690



3670036

Inverse Universe

The Inverse Universe completely reimagines the original color for something new.



15871348



16713055



3004658



7892080



12058690



3670036

Previews

White Background



This preview shows how the Decimal color 15871348 looks on a white background.

Color Contrast Check

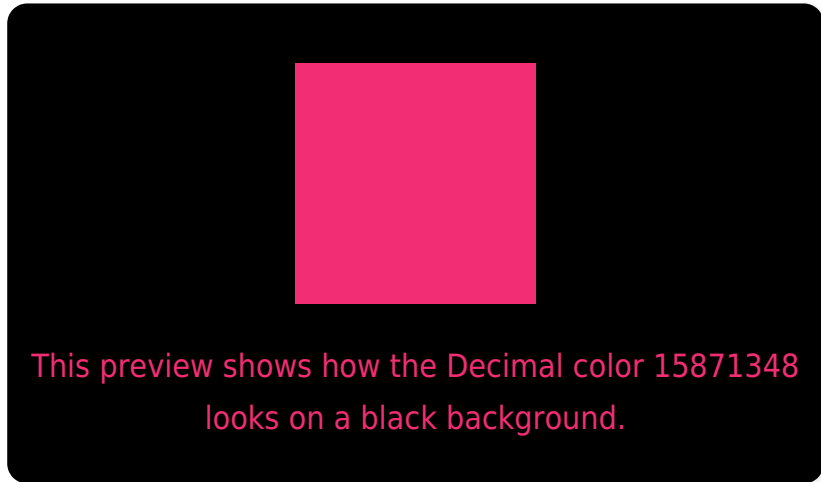
Large Text (above 18pt) WCAG AA ✓ Pass

Any Text WCAG AA × Fail

Large Text (above 18pt) WCAG AAA × Fail

Any Text WCAG AAA × Fail

Black Background



Color Contrast Check

Large Text (above 18pt) WCAG AA ✓ Pass

Any Text WCAG AA ✓ Pass

Large Text (above 18pt) WCAG AAA ✓ Pass

Any Text WCAG AAA × Fail

If you want to check with other color combinations, try the [Color Contrast Checker](#).

Decimal 15871348 Background



This preview shows how black text looks on a background with the Decimal color 15871348.

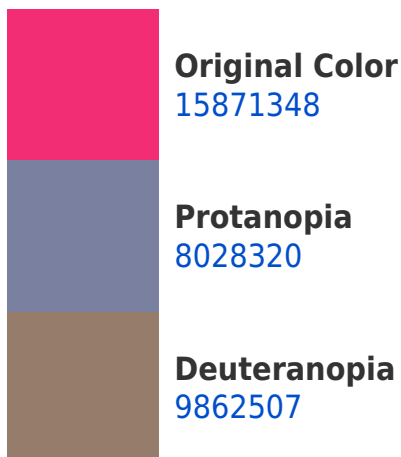


This preview shows how white text looks on a background with the Decimal color 15871348.

Color Blindness Simulation

Color vision deficiency is a very complex topic, and I could not describe the different causes any better than Wikipedia does, so if you want to learn more, you should check out their [article about color blindness](#).

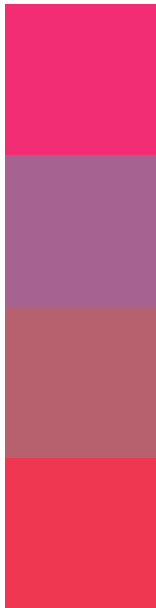
Dichromacy





Tritanopia
15678526

Trichromacy



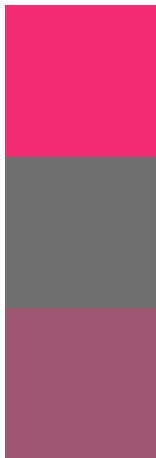
Original Color
15871348

Protanomaly
10904208

Deuteranomaly
12017774

Tritanomaly
15742802

Monochromacy



Original Color
15871348

Achromatopsia
7368816

Achromatomaly
10442865

CSS Examples

Text

The CSS property to change the color of the text to Decimal 15871348 is called "color". The color property can be set on classes, ids or directly on the HTML element.

This example shows how text in the color #F22D74 looks like.

```
.text, #text, p{  
  color:#F22D74  
}
```

If you want to add a text shadow in that color use the text-shadow property, you can generate a text shadow directly with our [CSS Text Shadow Generator](#).

Here you see how black text with a 4 pixel #F22D74 colored shadow looks like.

```
.shadow{ text-shadow: 4px 4px 2px #F22D74
}
```

Border

The CSS property to change the border of an element to Decimal 15871348 is called "border". The border property can be set on classes, ids or directly on the HTML element.

This example shows the color as border, it can be applied via the CSS property "border" or "border-color".

```
.border, #border, table{ border:4px solid
#F22D74 }
```

If only the border color should be changed use the property `border-color`.

```
.border{ border-color:#F22D74 }
```

If you want to add a box shadow in that color use:

Here you see how a box with a 4 pixel #F22D74 colored shadow looks like.

```
.boxshadow{ -moz-box-shadow:4px 4px 4px  
4px #F22D74; -webkit-box-shadow:4px 4px  
4px 4px #F22D74; box-shadow:4px 4px 4px  
4px #F22D74 }
```

Background

The CSS property to change the background color of an element to Decimal 15871348 is called "background". The background property can be set on classes, ids or directly on the HTML element.

```
.background, #background, body{  
background:#F22D74 }
```

If only the background color should be changed can be used:

```
.background{ background-color:#F22D74 }
```

This example shows the color as background, it is applied via the CSS property "background".

To optimize and compress your CSS code, you can use our [online CSS compressor and optimizer](#) based on csstidy. If you want to create a linear or radial gradient as background or border, check our [CSS Gradient Generator](#).

Hey! You found this booklet interesting? Support Converting Colors with the new Membership Option!

The pro membership hides all ads, plus gives you double the colors in the color bucket, and more awesome pro features!

[Learn more, Memberships starting at \\$2.50/m!](#)

**Follow me
on Twitter!**

@ConvertingColor