

# Converting Colors

Decimal(15883385)

Have a look what the booklet for  
Decimal(15883385) contains.

<b>Decimal(15883385)</b> .....	3
<i><b>Conversions</b></i> .....	4
<i><b>Details</b></i> .....	6
<i><b>Harmonies</b></i> .....	11
<i><b>Previews</b></i> .....	23
<i><b>Color Blindness Simulation</b></i> .....	26
<i><b>CSS Examples</b></i> .....	29

# **Color**

**Decimal(15883385)**

# Conversions

## Conversions Part 1

Format	Color
Hex	F25C79
RGB	242, 92, 121
RGB Percent	95%, 36%, 47%
CMY	0.0510, 0.6392, 0.5255
CMYK	0.00, 0.62, 0.50, 0.05
HSL	348°, 85%, 65%
HSV	348°, 62%, 95%
XYZ	43.8963, 27.9120, 21.1631
YIQ	140.1560, 80.0910, 40.8190

# Conversions

## Conversions Part 2

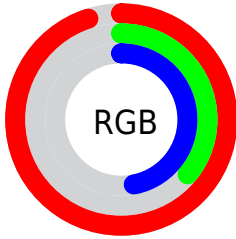
Format	Color
R <sub>YB</sub>	242, 92, 121
Decimal	15883385
CIE Lab	59.81, 59.72, 14.85
CIE LCh	60, 61.541, 13.967
Yxy	27.9120, 0.4721, 0.3002
Android (android.graphics.Color)	4294073465 (0xFFFF25C79)
YUV	140.1560, -9.4439, 89.3172
Hunter-Lab	52.8318, 55.8543, 13.2322

# Details

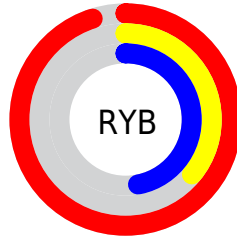
The Decimal color **15883385** is a light color, and the websafe version is hex **FF6699**. The color can be described as light muted rose. A complement of this color would be **6091477**, and the grayscale version is **9211020**.

A 20% lighter version of the original color is **16749741**, and **11869513** is the 20% darker color. If you saturate the color by 10%, you get **15877221**, and if you desaturate by 10%, it is **15889549**.

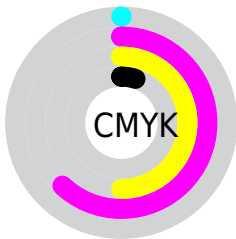
# Distribution



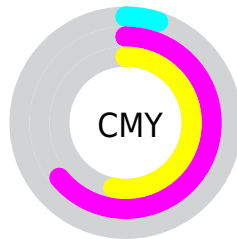
- Red (95%)
- Green (36%)
- Blue (47%)



- Red (95%)
- Yellow (36%)
- Blue (47%)



- Cyan (0%)
- Magenta (62%)
- Yellow (50%)
- Black (5%)



- Cyan (5%)
- Magenta (64%)
- Yellow (53%)

# Brightness & Saturation Gradients

These gradients show how the Decimal color 15883385 changes by changing the brightness by 10 percent. The first figure shows a shift by +10% for each color and the second figure -10%.

Similar to the brightness gradients but the following saturation gradients show a change of the Decimal color 15883385 by changing the saturation by 10% instead.



 15883385

 15883385

16777215

 13844320

 16749741

 11869513

 16757192

 9830451

 16764644

 7929886

 16772095

 5963781

 4194307

 1900545

 0

 15883385

 15883385

 15877221

 15889549

 15871058

 15895712

 15864638

 15902132

 15859759

 15908295

 15914459

 15920622

 15925247

# Harmonies

## Analogous

The Analogous color harmony consists of three colors that are next to each other on the color wheel.



14901679



15883385



15035463

# Triad

The Triadic color harmony groups three colors that are evenly spaced from another and form a triangle on the color wheel.



15883385



5611836



40696

# Complementary

The Complementary color scheme is a pair of colors which are on the opposite of each other on the color wheel.



15883385



6091477

# Split Complementary

Split-complementary colors differ from the complementary color scheme. The scheme consists of three colors, the original color and two neighbors of the complement color.



42970



15883385



43120

# Square

The Square scheme is like the rectangle color scheme, but the four colors are evenly spaced on the color wheel.



15883385



9737493



43689



5410554

# Rectangle

The Rectangle color scheme consists of four colors that form a rectangle on the color wheel.



15883385



13663018



43689



41713



# Sweetspot

The Sweet Spot groups the original color and five complimentary colors.



15883385



16764888



13917426



8413800



0



8421504



# Same Dimension

The Same Dimension uses a secret algorithm to generate beautiful new colors.



15883385



16728679



15894876



7892078



12058659



3670027



# Inverse Universe

The Inverse Universe completely reimagines the original color for something new.



15883385



16728679



6079986



7892078



12058659



3670027



# Previews

## White Background



This preview shows how the Decimal color 15883385 looks on a white background.

## Color Contrast Check

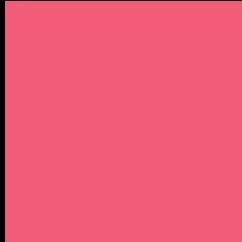
Large Text (above 18pt) WCAG AA ✓ Pass

Any Text WCAG AA × Fail

Large Text (above 18pt) WCAG AAA × Fail

Any Text WCAG AAA × Fail

# Black Background



This preview shows how the Decimal color 15883385 looks on a black background.

## Color Contrast Check

Large Text (above 18pt) WCAG AA ✓ Pass

Any Text WCAG AA ✓ Pass

Large Text (above 18pt) WCAG AAA ✓ Pass

Any Text WCAG AAA × Fail

If you want to check with other color combinations, try the [Color Contrast Checker](#).



## Decimal 15883385 Background



This preview shows how black text looks on a background with the Decimal color 15883385.



This preview shows how white text looks on a background with the Decimal color 15883385.

# Color Blindness Simulation

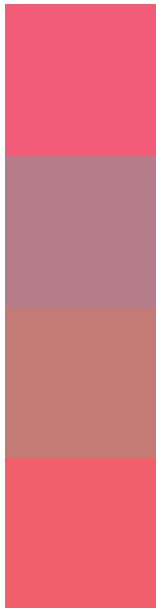
Color vision deficiency is a very complex topic, and I could not describe the different causes any better than Wikipedia does, so if you want to learn more, you should check out their [article about color blindness](#).

## Dichromacy





# Trichromacy



**Original Color**  
15883385

**Protanomaly**  
11894154

**Deuteranomaly**  
12876405

**Tritanomaly**  
15818605

# Monochromacy



**Original Color**  
15883385

**Achromatopsia**  
9211020

**Achromatomaly**  
11631493

# CSS Examples

## Text

The CSS property to change the color of the text to Decimal 15883385 is called "color". The color property can be set on classes, ids or directly on the HTML element.

This example shows how text in the color #F25C79 looks like.

```
.text, #text, p{  
  color:#F25C79  
}
```

If you want to add a text shadow in that color use the text-shadow property, you can generate a text shadow directly with our [CSS Text Shadow Generator](#).

Here you see how black text with a 4 pixel #F25C79 colored shadow looks like.

```
.shadow{ text-shadow: 4px 4px 2px #F25C79
}
```

## Border

The CSS property to change the border of an element to Decimal 15883385 is called "border". The border property can be set on classes, ids or directly on the HTML element.

This example shows the color as border, it can be applied via the CSS property "border" or "border-color".

```
.border, #border, table{ border:4px solid
#F25C79 }
```

If only the border color should be changed use the property `border-color`.

```
.border{ border-color:#F25C79 }
```

If you want to add a box shadow in that color use:

Here you see how a box with a 4 pixel #F25C79 colored shadow looks like.

```
.boxshadow{ -moz-box-shadow:4px 4px 4px  
4px #F25C79; -webkit-box-shadow:4px 4px  
4px 4px #F25C79; box-shadow:4px 4px 4px  
4px #F25C79 }
```

# Background

The CSS property to change the background color of an element to Decimal 15883385 is called "background". The background property can be set on classes, ids or directly on the HTML element.

```
.background, #background, body{  
background:#F25C79 }
```

If only the background color should be changed can be used:

```
.background{ background-color:#F25C79 }
```

This example shows the color as background, it is applied via the CSS property "background".

To optimize and compress your CSS code, you can use our [online CSS compressor and optimizer](#) based on csstidy. If you want to create a linear or radial gradient as background or border, check our [CSS Gradient Generator](#).



Hey! You found this booklet interesting? Support Converting Colors with the new Membership Option!

The pro membership hides all ads, plus gives you double the colors in the color bucket, and more awesome pro features!

**[Learn more, Memberships starting at \\$2.50/m!](#)**

**Follow me  
on Twitter!**

@ConvertingColor