

# Converting Colors

Decimal(15883895)

Have a look what the booklet for  
Decimal(15883895) contains.

<b>Decimal(15883895)</b> .....	3
<i><b>Conversions</b></i> .....	4
<i><b>Details</b></i> .....	6
<i><b>Harmonies</b></i> .....	11
<i><b>Previews</b></i> .....	23
<i><b>Color Blindness Simulation</b></i> .....	26
<i><b>CSS Examples</b></i> .....	29

# **Color**

**Decimal(15883895)**

# Conversions

## Conversions Part 1

Format	Color
Hex	F25E77
RGB	242, 94, 119
RGB Percent	95%, 37%, 47%
CMY	0.0510, 0.6314, 0.5333
CMYK	0.00, 0.61, 0.51, 0.05
HSL	350°, 85%, 66%
HSV	350°, 61%, 95%
XYZ	43.9504, 28.2146, 20.5823
YIQ	141.1020, 80.1830, 39.1510

# Conversions

## Conversions Part 2

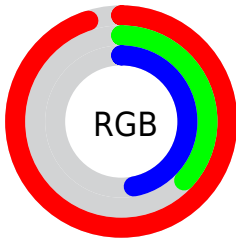
Format	Color
R <sub>YB</sub>	242, 94, 119
Decimal	15883895
CIE Lab	60.08, 58.70, 16.39
CIE LCh	60, 60.950, 15.603
Yxy	28.2146, 0.4739, 0.3042
Android (android.graphics.Color)	4294073975 (0xFFFF25E77)
YUV	141.1020, -10.8963, 88.4875
Hunter-Lab	53.1174, 54.7392, 14.2081

# Details

The Decimal color **15883895** is a light color, and the websafe version is hex **FF6666**. The color can be described as light muted rose. A complement of this color would be **6222553**, and the grayscale version is **9276813**.

A 20% lighter version of the original color is **16750251**, and **11870535** is the 20% darker color. If you saturate the color by 10%, you get **15877731**, and if you desaturate by 10%, it is **15890059**.

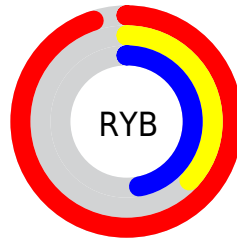
# Distribution



Red (95%)

Green (37%)

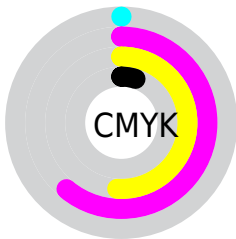
Blue (47%)



Red (95%)

Yellow (37%)

Blue (47%)

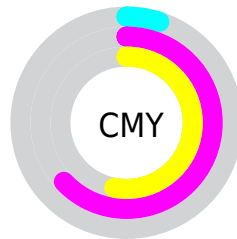


Cyan (0%)

Magenta (61%)

Yellow (51%)

Black (5%)



Cyan (5%)

Magenta (63%)

Yellow (53%)

# Brightness & Saturation Gradients

These gradients show how the Decimal color 15883895 changes by changing the brightness by 10 percent. The first figure shows a shift by +10% for each color and the second figure -10%.

Similar to the brightness gradients but the following saturation gradients show a change of the Decimal color 15883895 by changing the saturation by 10% instead.



 15883895

 15883895

16777215

 13844830

 16750251

 11870535

 16757702

 9830449

 16765154

 7864348

 16772607

 5963778

 4194307

 1900545

 0

 15883895

 15883895

■ 15877731

■ 15890059

■ 15871567

■ 15896223

■ 15865147

■ 15902643

■ 15859753

■ 15908807

■ 15914972

■ 15921136

■ 15925247

# Harmonies

## Analogous

The Analogous color harmony consists of three colors that are next to each other on the color wheel.



15032749



15883895



14970694

# Triad

The Triadic color harmony groups three colors that are evenly spaced from another and form a triangle on the color wheel.



15883895



5481024



40697

# Complementary

The Complementary color scheme is a pair of colors which are on the opposite of each other on the color wheel.



15883895



6222553

# Split Complementary

Split-complementary colors differ from the complementary color scheme. The scheme consists of three colors, the original color and two neighbors of the complement color.



42973



15883895



43380

# Square

The Square scheme is like the rectangle color scheme, but the four colors are evenly spaced on the color wheel.



15883895



9606937



43692



6065657

# Rectangle

The Rectangle color scheme consists of four colors that form a rectangle on the color wheel.



15883895



13598250



43692



41714



# Sweetspot

The Sweet Spot groups the original color and five complimentary colors.



15883895



16765401



14114546



8414056



0



8421504



# Same Dimension

The Same Dimension uses a secret algorithm to generate beautiful new colors.



15883895



16729444



15895902



7892078



12058655



3670025



# Inverse Universe

The Inverse Universe completely reimagines the original color for something new.



15883895



16729444



6210546



7892078



12058655



3670025



# Previews

## White Background



This preview shows how the Decimal color 15883895 looks on a white background.

## Color Contrast Check

Large Text (above 18pt) WCAG AA ✓ Pass

Any Text WCAG AA × Fail

Large Text (above 18pt) WCAG AAA × Fail

Any Text WCAG AAA × Fail

# Black Background



This preview shows how the Decimal color 15883895 looks on a black background.

## Color Contrast Check

Large Text (above 18pt) WCAG AA ✓ Pass

Any Text WCAG AA ✓ Pass

Large Text (above 18pt) WCAG AAA ✓ Pass

Any Text WCAG AAA × Fail

If you want to check with other color combinations, try the [Color Contrast Checker](#).



## Decimal 15883895 Background



This preview shows how black text looks on a background with the Decimal color 15883895.



This preview shows how white text looks on a background with the Decimal color 15883895.

# Color Blindness Simulation

Color vision deficiency is a very complex topic, and I could not describe the different causes any better than Wikipedia does, so if you want to learn more, you should check out their [article about color blindness](#).


## Dichromacy



**Original Color**  
15883895

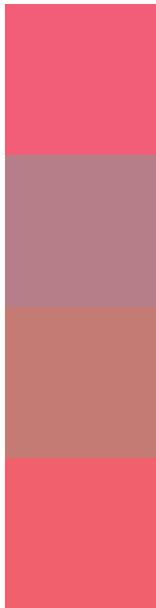
**Protanopia**  
9736337

**Deuteranopia**  
11176816



**Tritanopia**  
15819111

# Trichromacy



**Original Color**  
15883895

**Protanomaly**  
11959944

**Deuteranomaly**  
12876659

**Tritanomaly**  
15818861

# Monochromacy



**Original Color**  
15883895

**Achromatopsia**  
9276813

**Achromatomaly**  
11697285

# CSS Examples

## Text

The CSS property to change the color of the text to Decimal 15883895 is called "color". The color property can be set on classes, ids or directly on the HTML element.

This example shows how text in the color #F25E77 looks like.

```
.text, #text, p{  
  color:#F25E77  
}
```

If you want to add a text shadow in that color use the text-shadow property, you can generate a text shadow directly with our [CSS Text Shadow Generator](#).

Here you see how black text with a 4 pixel #F25E77 colored shadow looks like.

```
.shadow{ text-shadow: 4px 4px 2px #F25E77
}
```

## Border

The CSS property to change the border of an element to Decimal 15883895 is called "border". The border property can be set on classes, ids or directly on the HTML element.

This example shows the color as border, it can be applied via the CSS property "border" or "border-color".

```
.border, #border, table{ border:4px solid
#F25E77 }
```

If only the border color should be changed use the property `border-color`.

```
.border{ border-color:#F25E77 }
```

If you want to add a box shadow in that color use:

Here you see how a box with a 4 pixel #F25E77 colored shadow looks like.

```
.boxshadow{ -moz-box-shadow:4px 4px 4px  
4px #F25E77; -webkit-box-shadow:4px 4px  
4px 4px #F25E77; box-shadow:4px 4px 4px  
4px #F25E77 }
```

# Background

The CSS property to change the background color of an element to Decimal 15883895 is called "background". The background property can be set on classes, ids or directly on the HTML element.

```
.background, #background, body{  
background:#F25E77 }
```

If only the background color should be changed can be used:

```
.background{ background-color:#F25E77 }
```

This example shows the color as background, it is applied via the CSS property "background".

To optimize and compress your CSS code, you can use our [online CSS compressor and optimizer](#) based on csstidy. If you want to create a linear or radial gradient as background or border, check our [CSS Gradient Generator](#).



Hey! You found this booklet interesting? Support Converting Colors with the new Membership Option!

The pro membership hides all ads, plus gives you double the colors in the color bucket, and more awesome pro features!

**[Learn more, Memberships starting at \\$2.50/m!](#)**

**Follow me  
on Twitter!**

@ConvertingColor