

Converting Colors

Decimal(15884665)

Have a look what the booklet for
Decimal(15884665) contains.

Decimal(15884665)	3
<i>Conversions</i>	4
<i>Details</i>	6
<i>Harmonies</i>	11
<i>Previews</i>	23
<i>Color Blindness Simulation</i>	26
<i>CSS Examples</i>	29

Color

Decimal(15884665)

Conversions

Conversions Part 1

Format	Color
Hex	F26179
RGB	242, 97, 121
RGB Percent	95%, 38%, 47%
CMY	0.0510, 0.6196, 0.5255
CMYK	0.00, 0.60, 0.50, 0.05
HSL	350°, 85%, 66%
HSV	350°, 60%, 95%
XYZ	44.3438, 28.8071, 21.3123
YIQ	143.0910, 78.7160, 38.2040

Conversions

Conversions Part 2

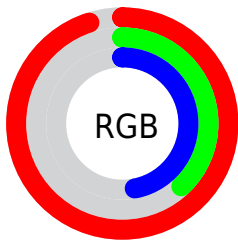
Format	Color
R_{YB}	242, 97, 121
Decimal	15884665
CIE _{Lab}	60.61, 57.57, 15.96
CIE _{LCh}	61, 59.747, 15.498
Yxy	28.8071, 0.4694, 0.3050
Android (android.graphics.Color)	4294074745 (0xFFFF26179)
YUV	143.0910, -10.8909, 86.7432
Hunter-Lab	53.6723, 53.5496, 14.0276

Details

The Decimal color **15884665** is a light color, and the websafe version is hex **FF6699**. A complement of this color would be **6419162**, and the grayscale version is **9408399**.

A 20% lighter version of the original color is **16751021**, and **11871817** is the 20% darker color. If you saturate the color by 10%, you get **15878501**, and if you desaturate by 10%, it is **15890829**.

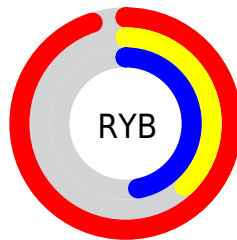
Distribution



Red (95%)

Green (38%)

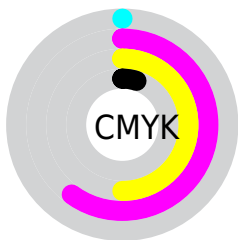
Blue (47%)



Red (95%)

Yellow (38%)

Blue (47%)

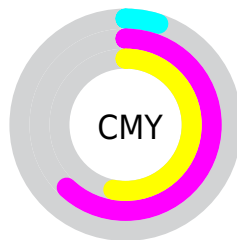


Cyan (0%)

Magenta (60%)

Yellow (50%)

Black (5%)



Cyan (5%)

Magenta (62%)

Yellow (53%)

Brightness & Saturation Gradients

These gradients show how the Decimal color 15884665 changes by changing the brightness by 10 percent. The first figure shows a shift by +10% for each color and the second figure -10%.

Similar to the brightness gradients but the following saturation gradients show a change of the Decimal color 15884665 by changing the saturation by 10% instead.

 15884665

 15884665

16777215

 13845856

 16751021

 11871817

 16758216

 9895987

 16765668

 7929886

 16773375

 6029317

 4259843

 2031617

 0

 15884665

 15884665

■ 15878501

■ 15890829

■ 15872337

■ 15896993

■ 15865916

■ 15903414

■ 15859752

■ 15909578

■ 15915742

■ 15921906

■ 15925247

Harmonies

Analogous

The Analogous color harmony consists of three colors that are next to each other on the color wheel.



15033518



15884665



14971209

Triad

The Triadic color harmony groups three colors that are evenly spaced from another and form a triangle on the color wheel.



15884665



5678147



40952

Complementary

The Complementary color scheme is a pair of colors which are on the opposite of each other on the color wheel.



15884665



6419162

Split Complementary

Split-complementary colors differ from the complementary color scheme. The scheme consists of three colors, the original color and two neighbors of the complement color.



43228



15884665



43638

Square

The Square scheme is like the rectangle color scheme, but the four colors are evenly spaced on the color wheel.



15884665



9672735



43949



6328312

Rectangle

The Rectangle color scheme consists of four colors that form a rectangle on the color wheel.



15884665



13664046



43949



41970

Sweetspot

The Sweet Spot groups the original color and five complimentary colors.



15884665



16765401



14311922



8414056



0



8421504

Same Dimension

The Same Dimension uses a secret algorithm to generate beautiful new colors.



15884665



16729958



15896929



7892078



12058654



3670025

Inverse Universe

The Inverse Universe completely reimagines the original color for something new.



15884665



16729958



6406898



7892078



12058654



3670025

Previews

White Background



This preview shows how the Decimal color 15884665 looks on a white background.

Color Contrast Check

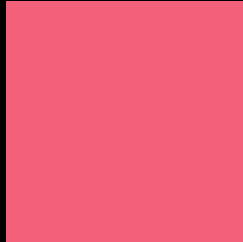
Large Text (above 18pt) WCAG AA ✓ Pass

Any Text WCAG AA × Fail

Large Text (above 18pt) WCAG AAA × Fail

Any Text WCAG AAA × Fail

Black Background



This preview shows how the Decimal color 15884665 looks on a black background.

Color Contrast Check

Large Text (above 18pt) WCAG AA ✓ Pass

Any Text WCAG AA ✓ Pass

Large Text (above 18pt) WCAG AAA ✓ Pass

Any Text WCAG AAA × Fail

If you want to check with other color combinations, try the [Color Contrast Checker](#).

Decimal 15884665 Background



This preview shows how black text looks on a background with the Decimal color 15884665.

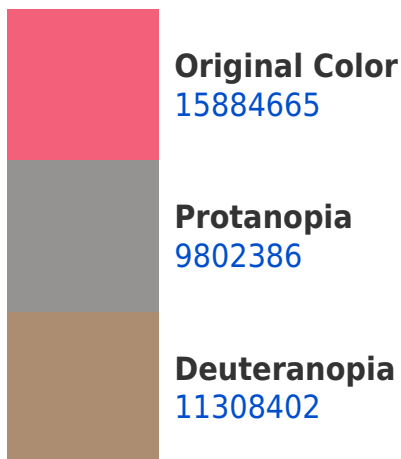



This preview shows how white text looks on a background with the Decimal color 15884665.

Color Blindness Simulation

Color vision deficiency is a very complex topic, and I could not describe the different causes any better than Wikipedia does, so if you want to learn more, you should check out their [article about color blindness](#).

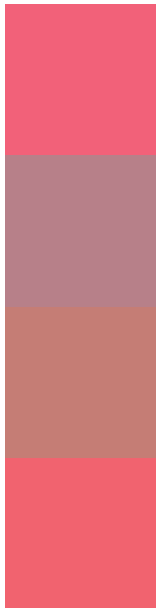
Dichromacy





Tritanopia
15819882

Trichromacy



Original Color
15884665

Protanomaly
12025993

Deuteranomaly
12942709

Tritanomaly
15819631

Monochromacy



Original Color
15884665

Achromatopsia
9408399

Achromatomaly
11763335

CSS Examples

Text

The CSS property to change the color of the text to Decimal 15884665 is called "color". The color property can be set on classes, ids or directly on the HTML element.

This example shows how text in the color #F26179 looks like.

```
.text, #text, p{  
  color:#F26179  
}
```

If you want to add a text shadow in that color use the text-shadow property, you can generate a text shadow directly with our [CSS Text Shadow Generator](#).

Here you see how black text with a 4 pixel #F26179 colored shadow looks like.

```
.shadow{ text-shadow: 4px 4px 2px #F26179
}
```

Border

The CSS property to change the border of an element to Decimal 15884665 is called "border". The border property can be set on classes, ids or directly on the HTML element.

This example shows the color as border, it can be applied via the CSS property "border" or "border-color".

```
.border, #border, table{ border:4px solid
#F26179 }
```

If only the border color should be changed use the property `border-color`.

```
.border{ border-color:#F26179 }
```

If you want to add a box shadow in that color use:

Here you see how a box with a 4 pixel #F26179 colored shadow looks like.

```
.boxshadow{ -moz-box-shadow:4px 4px 4px  
4px #F26179; -webkit-box-shadow:4px 4px  
4px 4px #F26179; box-shadow:4px 4px 4px  
4px #F26179 }
```

Background

The CSS property to change the background color of an element to Decimal 15884665 is called "background". The background property can be set on classes, ids or directly on the HTML element.

```
.background, #background, body{  
background:#F26179 }
```

If only the background color should be changed can be used:

```
.background{ background-color:#F26179 }
```

This example shows the color as background, it is applied via the CSS property "background".

To optimize and compress your CSS code, you can use our [online CSS compressor and optimizer](#) based on csstidy. If you want to create a linear or radial gradient as background or border, check our [CSS Gradient Generator](#).

Hey! You found this booklet interesting? Support Converting Colors with the new Membership Option!

The pro membership hides all ads, plus gives you double the colors in the color bucket, and more awesome pro features!

[Learn more, Memberships starting at \\$2.50/m!](#)

**Follow me
on Twitter!**

@ConvertingColor