

Converting Colors

Decimal(15884673)

Have a look what the booklet for
Decimal(15884673) contains.

Decimal(15884673)	3
<i>Conversions</i>	4
<i>Details</i>	6
<i>Harmonies</i>	11
<i>Previews</i>	23
<i>Color Blindness Simulation</i>	26
<i>CSS Examples</i>	29

Color

Decimal(15884673)

Conversions

Conversions Part 1

Format	Color
Hex	F26181
RGB	242, 97, 129
RGB Percent	95%, 38%, 51%
CMY	0.0510, 0.6196, 0.4941
CMYK	0.00, 0.60, 0.47, 0.05
HSL	347°, 85%, 66%
HSV	347°, 60%, 95%
XYZ	44.8551, 29.0116, 24.0046
YIQ	144.0030, 76.1480, 40.6920

Conversions

Conversions Part 2

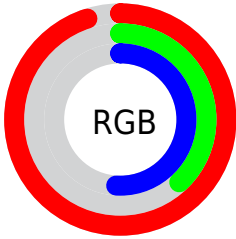
Format	Color
R _Y B	242, 97, 129
Decimal	15884673
CIE Lab	60.79, 58.28, 11.58
CIE LCh	61, 59.419, 11.237
Yxy	29.0116, 0.4583, 0.2964
Android (android.graphics.Color)	4294074753 (0xFFFF26181)
YUV	144.0030, -7.3965, 85.9434
Hunter-Lab	53.8624, 54.3904, 11.2803

Details

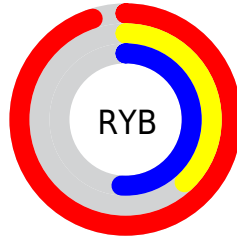
The Decimal color **15884673** is a light color, and the websafe version is hex **FF6699**. A complement of this color would be **6419154**, and the grayscale version is **9474192**.

A 20% lighter version of the original color is **16751030**, and **11871568** is the 20% darker color. If you saturate the color by 10%, you get **15878510**, and if you desaturate by 10%, it is **15890836**.

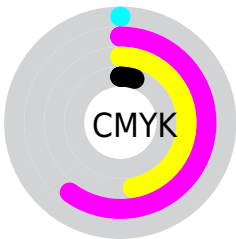
Distribution



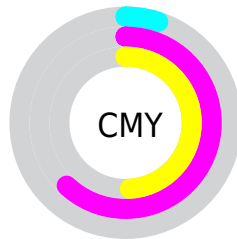
- Red (95%)
- Green (38%)
- Blue (51%)



- Red (95%)
- Yellow (38%)
- Blue (51%)



- Cyan (0%)
- Magenta (60%)
- Yellow (47%)
- Black (5%)



- Cyan (5%)
- Magenta (62%)
- Yellow (49%)

Brightness & Saturation Gradients

These gradients show how the Decimal color 15884673 changes by changing the brightness by 10 percent. The first figure shows a shift by +10% for each color and the second figure -10%.

Similar to the brightness gradients but the following saturation gradients show a change of the Decimal color 15884673 by changing the saturation by 10% instead.

 15884673

 15884673

16777215

 13845864

 16751030

 11871568

 16758481

 9895993

 16765677

 7929892

 16773375

 6029327

 4259843

 2097153

 0

 15884673

 15884673

 15878510

 15890836

 15872347

 15896999

 15865928

 15903418

 15859766

 15909580

 15859765

 15915743

 15921906

 15925247

Harmonies

Analogous

The Analogous color harmony consists of three colors that are next to each other on the color wheel.



14706614



15884673



15232848

Triad

The Triadic color harmony groups three colors that are evenly spaced from another and form a triangle on the color wheel.



15884673



6398782



41462

Complementary

The Complementary color scheme is a pair of colors which are on the opposite of each other on the color wheel.



15884673



6419154

Split Complementary

Split-complementary colors differ from the complementary color scheme. The scheme consists of three colors, the original color and two neighbors of the complement color.



43735



15884673



43631

Square

The Square scheme is like the rectangle color scheme, but the four colors are evenly spaced on the color wheel.



15884673



10196510



44197



5083898

Rectangle

The Rectangle color scheme consists of four colors that form a rectangle on the color wheel.



15884673



13991221



44197



42478

Sweetspot

The Sweet Spot groups the original color and five complimentary colors.



15884673



16765403



13656562



8414058



0



8421504

Same Dimension

The Same Dimension uses a secret algorithm to generate beautiful new colors.



15884673



16729968



15894625



7892079



12058665



3670028

Inverse Universe

The Inverse Universe completely reimagines the original color for something new.



15884673



16729968



6409202



7892079



12058665



3670028

Previews

White Background



This preview shows how the Decimal color 15884673 looks on a white background.

Color Contrast Check

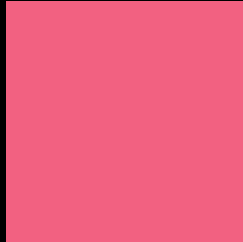
Large Text (above 18pt) WCAG AA ✓ Pass

Any Text WCAG AA × Fail

Large Text (above 18pt) WCAG AAA × Fail

Any Text WCAG AAA × Fail

Black Background



This preview shows how the Decimal color 15884673 looks on a black background.

Color Contrast Check

Large Text (above 18pt) WCAG AA ✓ Pass

Any Text WCAG AA ✓ Pass

Large Text (above 18pt) WCAG AAA ✓ Pass

Any Text WCAG AAA × Fail

If you want to check with other color combinations, try the [Color Contrast Checker](#).

Decimal 15884673 Background



This preview shows how black text looks on a background with the Decimal color 15884673.



This preview shows how white text looks on a background with the Decimal color 15884673.

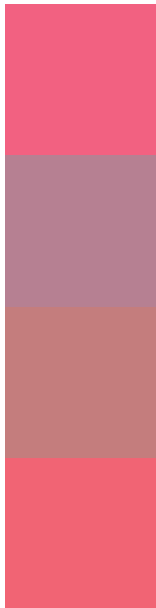
Color Blindness Simulation

Color vision deficiency is a very complex topic, and I could not describe the different causes any better than Wikipedia does, so if you want to learn more, you should check out their [article about color blindness](#).

Dichromacy



Trichromacy



Original Color
15884673

Protanomaly
11960466

Deuteranomaly
12877181

Tritanomaly
15819892

Monochromacy



Original Color
15884673

Achromatopsia
9474192

Achromatomaly
11829131

CSS Examples

Text

The CSS property to change the color of the text to Decimal 15884673 is called "color". The color property can be set on classes, ids or directly on the HTML element.

This example shows how text in the color #F26181 looks like.

```
.text, #text, p{  
  color:#F26181  
}
```

If you want to add a text shadow in that color use the text-shadow property, you can generate a text shadow directly with our [CSS Text Shadow Generator](#).

Here you see how black text with a 4 pixel #F26181 colored shadow looks like.

```
.shadow{ text-shadow: 4px 4px 2px #F26181
}
```

Border

The CSS property to change the border of an element to Decimal 15884673 is called "border". The border property can be set on classes, ids or directly on the HTML element.

This example shows the color as border, it can be applied via the CSS property "border" or "border-color".

```
.border, #border, table{ border:4px solid
#F26181 }
```

If only the border color should be changed use the property `border-color`.

```
.border{ border-color:#F26181 }
```

If you want to add a box shadow in that color use:

Here you see how a box with a 4 pixel #F26181 colored shadow looks like.

```
.boxshadow{ -moz-box-shadow:4px 4px 4px  
4px #F26181; -webkit-box-shadow:4px 4px  
4px 4px #F26181; box-shadow:4px 4px 4px  
4px #F26181 }
```

Background

The CSS property to change the background color of an element to Decimal 15884673 is called "background". The background property can be set on classes, ids or directly on the HTML element.

```
.background, #background, body{  
background:#F26181 }
```

If only the background color should be changed can be used:

```
.background{ background-color:#F26181 }
```

This example shows the color as background, it is applied via the CSS property "background".

To optimize and compress your CSS code, you can use our [online CSS compressor and optimizer](#) based on csstidy. If you want to create a linear or radial gradient as background or border, check our [CSS Gradient Generator](#).

Hey! You found this booklet interesting? Support Converting Colors with the new Membership Option!

The pro membership hides all ads, plus gives you double the colors in the color bucket, and more awesome pro features!

[Learn more, Memberships starting at \\$2.50/m!](#)

**Follow me
on Twitter!**

@ConvertingColor