

Converting Colors

Decimal(15939695)

Have a look what the booklet for
Decimal(15939695) contains.

Decimal(15939695)	3
<i>Conversions</i>	4
<i>Details</i>	6
<i>Harmonies</i>	11
<i>Previews</i>	23
<i>Color Blindness Simulation</i>	26
<i>CSS Examples</i>	29

Color

Decimal(15939695)

Conversions

Conversions Part 1

Format	Color
Hex	F3386F
RGB	243, 56, 111
RGB Percent	95%, 22%, 44%
CMY	0.0471, 0.7804, 0.5647
CMYK	0.00, 0.77, 0.54, 0.05
HSL	342°, 89%, 59%
HSV	342°, 77%, 95%
XYZ	41.2456, 23.0307, 17.3104
YIQ	118.1830, 93.7970, 56.7490

Conversions

Conversions Part 2

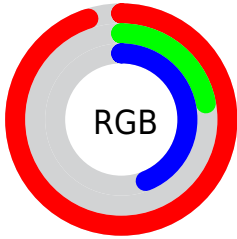
Format	Color
R_{YB}	243, 56, 111
Decimal	15939695
CIE _{Lab}	55.10, 72.06, 14.25
CIE _{LCh}	55, 73.456, 11.184
Yxy	23.0307, 0.5055, 0.2823
Android (android.graphics.Color)	4294129775 (0xFFFF3386F)
YUV	118.1830, -3.5412, 109.4645
Hunter-Lab	47.9903, 69.4297, 12.2070

Details

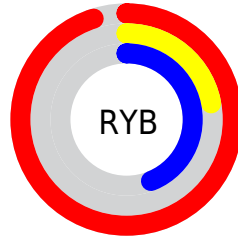
The Decimal color **15939695** is a dark color, and the websafe version is hex **FF3366**. The color can be described as middle washed rose. A complement of this color would be **3732412**, and the grayscale version is **7763574**.

A 20% lighter version of the original color is **16742306**, and **11796544** is the 20% darker color. If you saturate the color by 10%, you get **15933534**, and if you desaturate by 10%, it is **15945856**.

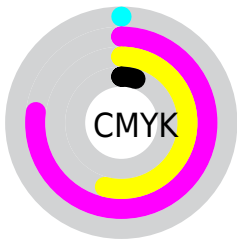
Distribution



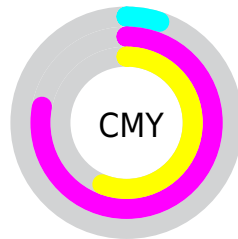
- Red (95%)
- Green (22%)
- Blue (44%)



- Red (95%)
- Yellow (22%)
- Blue (44%)



- Cyan (0%)
- Magenta (77%)
- Yellow (54%)
- Black (5%)



- Cyan (5%)
- Magenta (78%)
- Yellow (56%)

Brightness & Saturation Gradients

These gradients show how the Decimal color 15939695 changes by changing the brightness by 10 percent. The first figure shows a shift by +10% for each color and the second figure -10%.

Similar to the brightness gradients but the following saturation gradients show a change of the Decimal color 15939695 by changing the saturation by 10% instead.

 15939695

 15939695

16777215

 13828439

 16742306

 11796544

 16750013

 9764906

 16757465

 7733271

 16765173

 5767170

 16772863

 3801090

 1179648

 0

 15939695

 15939695

 15933534

 15945856

 15927117

 15952273

 15925319

 15958434

 15964596

 15971013

 15977174

 15983335

 15989496

 15990783

Harmonies

Analogous

The Analogous color harmony consists of three colors that are next to each other on the color wheel.



14697646



15939695



15029042

Triad

The Triadic color harmony groups three colors that are evenly spaced from another and form a triangle on the color wheel.



15939695



4167181



38653

Complementary

The Complementary color scheme is a pair of colors which are on the opposite of each other on the color wheel.



15939695



3732412

Split Complementary

Split-complementary colors differ from the complementary color scheme. The scheme consists of three colors, the original color and two neighbors of the complement color.



40663



15939695



40280

Square

The Square scheme is like the rectangle color scheme, but the four colors are evenly spaced on the color wheel.



15939695



9079040



41115



34047

Rectangle

The Rectangle color scheme consists of four colors that form a rectangle on the color wheel.



15939695



13527040



41115



39668

Sweetspot

The Sweet Spot groups the original color and five complimentary colors.



15939695



16762070



12269811



8412262



0



8421504

Same Dimension

The Same Dimension uses a secret algorithm to generate beautiful new colors.



15939695



16716889



15949112



8023666



12189751



3866641

Inverse Universe

The Inverse Universe completely reimagines the original color for something new.



15939695



16716889



3722995



8023666



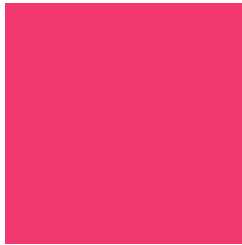
12189751



3866641

Previews

White Background



This preview shows how the Decimal color 15939695 looks on a white background.

Color Contrast Check

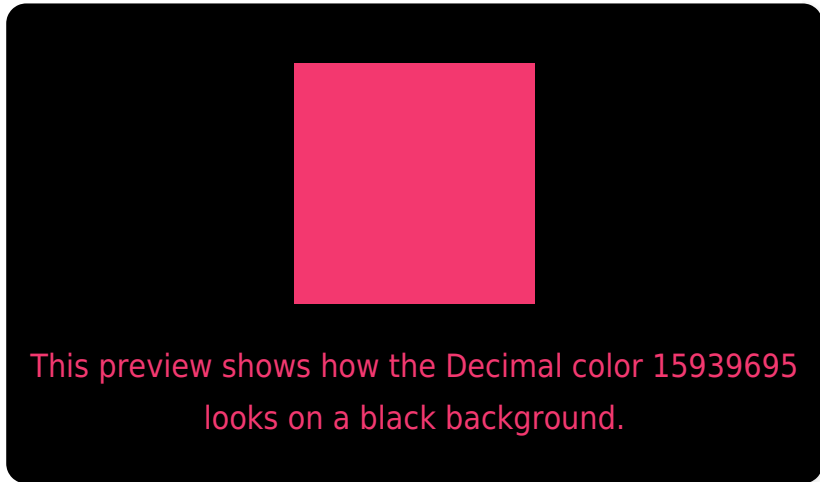
Large Text (above 18pt) WCAG AA ✓ Pass

Any Text WCAG AA × Fail

Large Text (above 18pt) WCAG AAA × Fail

Any Text WCAG AAA × Fail

Black Background



Color Contrast Check

Large Text (above 18pt) WCAG AA ✓ Pass

Any Text WCAG AA ✓ Pass

Large Text (above 18pt) WCAG AAA ✓ Pass

Any Text WCAG AAA × Fail

If you want to check with other color combinations, try the [Color Contrast Checker](#).

Decimal 15939695 Background



This preview shows how black text looks on a background with the Decimal color 15939695.



This preview shows how white text looks on a background with the Decimal color 15939695.

Color Blindness Simulation

Color vision deficiency is a very complex topic, and I could not describe the different causes any better than Wikipedia does, so if you want to learn more, you should check out their [article about color blindness](#).

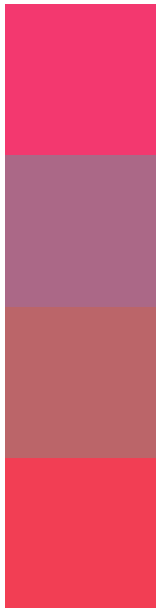
Dichromacy





Tritanopia
15811141

Trichromacy



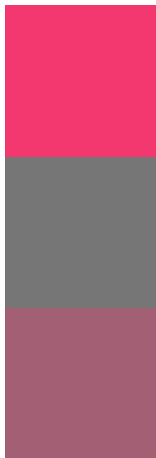
Original Color
15939695

Protanomaly
11233415

Deuteranomaly
12281193

Tritanomaly
15875668

Monochromacy



Original Color
15939695

Achromatopsia
7763574

Achromatomaly
10706803

CSS Examples

Text

The CSS property to change the color of the text to Decimal 15939695 is called "color". The color property can be set on classes, ids or directly on the HTML element.

This example shows how text in the color #F3386F looks like.

```
.text, #text, p{  
  color:#F3386F  
}
```

If you want to add a text shadow in that color use the text-shadow property, you can generate a text shadow directly with our [CSS Text Shadow Generator](#).

Here you see how black text with a 4 pixel #F3386F colored shadow looks like.

```
.shadow{ text-shadow: 4px 4px 2px #F3386F
}
```

Border

The CSS property to change the border of an element to Decimal 15939695 is called "border". The border property can be set on classes, ids or directly on the HTML element.

This example shows the color as border, it can be applied via the CSS property "border" or "border-color".

```
.border, #border, table{ border:4px solid
#F3386F }
```

If only the border color should be changed use the property `border-color`.

```
.border{ border-color:#F3386F }
```

If you want to add a box shadow in that color use:

Here you see how a box with a 4 pixel #F3386F colored shadow looks like.

```
.boxshadow{ -moz-box-shadow:4px 4px 4px  
4px #F3386F; -webkit-box-shadow:4px 4px  
4px 4px #F3386F; box-shadow:4px 4px 4px  
4px #F3386F }
```

Background

The CSS property to change the background color of an element to Decimal 15939695 is called "background". The background property can be set on classes, ids or directly on the HTML element.

```
.background, #background, body{  
background:#F3386F }
```

If only the background color should be changed can be used:

```
.background{ background-color:#F3386F }
```

This example shows the color as background, it is applied via the CSS property "background".

To optimize and compress your CSS code, you can use our [online CSS compressor and optimizer](#) based on csstidy. If you want to create a linear or radial gradient as background or border, check our [CSS Gradient Generator](#).

Hey! You found this booklet interesting? Support Converting Colors with the new Membership Option!

The pro membership hides all ads, plus gives you double the colors in the color bucket, and more awesome pro features!

[Learn more, Memberships starting at \\$2.50/m!](#)

**Follow me
on Twitter!**

@ConvertingColor