

Converting Colors

Decimal(15941510)

Have a look what the booklet for
Decimal(15941510) contains.

Decimal(15941510)	3
<i>Conversions</i>	4
<i>Details</i>	6
<i>Harmonies</i>	11
<i>Previews</i>	23
<i>Color Blindness Simulation</i>	26
<i>CSS Examples</i>	29

Color

Decimal(15941510)

Conversions

Conversions Part 1

Format	Color
Hex	F33F86
RGB	243, 63, 134
RGB Percent	95%, 25%, 53%
CMY	0.0471, 0.7529, 0.4745
CMYK	0.00, 0.74, 0.45, 0.05
HSL	336°, 88%, 60%
HSV	336°, 74%, 95%
XYZ	43.0427, 24.3309, 24.9820
YIQ	124.9140, 84.4890, 60.2410

Conversions

Conversions Part 2

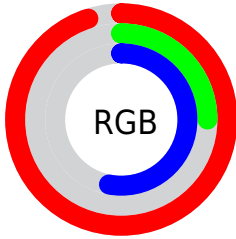
Format	Color
RYB	243, 63, 134
Decimal	15941510
CIELab	56.42, 71.82, 2.42
CIELCh	56, 71.860, 1.929
Yxy	24.3309, 0.4661, 0.2634
Android (android.graphics.Color)	4294131590 (0xFFFF33F86)
YUV	124.9140, 4.4794, 103.5614
Hunter-Lab	49.3264, 69.4398, 4.5003

Details

The Decimal color **15941510** is a dark color, and the websafe version is hex **FF3399**. The color can be described as middle washed rose. A complement of this color would be **4191148**, and the grayscale version is **8224125**.

A 20% lighter version of the original color is **16743867**, and **11862101** is the 20% darker color. If you saturate the color by 10%, you get **15935351**, and if you desaturate by 10%, it is **15947669**.

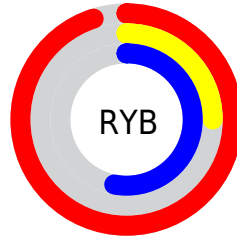
Distribution



Red (95%)

Green (25%)

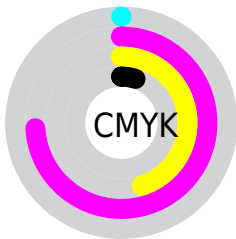
Blue (53%)



Red (95%)

Yellow (25%)

Blue (53%)

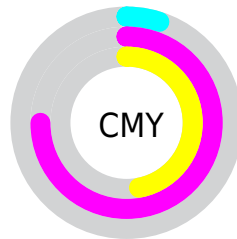


Cyan (0%)

Magenta (74%)

Yellow (45%)

Black (5%)



Cyan (5%)

Magenta (75%)

Yellow (47%)

Brightness & Saturation Gradients

These gradients show how the Decimal color 15941510 changes by changing the brightness by 10 percent. The first figure shows a shift by +10% for each color and the second figure -10%.

Similar to the brightness gradients but the following saturation gradients show a change of the Decimal color 15941510 by changing the saturation by 10% instead.

 15941510

 15941510

16777215

 13898861

 16743867

 11862101

 16751319

 9895998

 16759027

 7864360

 16766463

 5963796

 16774399

 4063235

 1703937

 0

 15941510

 15941510

■ 15935351

■ 15947669

■ 15928937

■ 15954083

■ 15925344

■ 15960242

■ 15966401

■ 15972560

■ 15978974

■ 15985133

■ 15990780

■ 15990783

Harmonies

Analogous

The Analogous color harmony consists of three colors that are next to each other on the color wheel.



13915331



15941510



15683401

Triad

The Triadic color harmony groups three colors that are evenly spaced from another and form a triangle on the color wheel.



15941510



6329856



40438

Complementary

The Complementary color scheme is a pair of colors which are on the opposite of each other on the color wheel.



15941510



4191148

Split Complementary

Split-complementary colors differ from the complementary color scheme. The scheme consists of three colors, the original color and two neighbors of the complement color.



41928



15941510



40776

Square

The Square scheme is like the rectangle color scheme, but the four colors are evenly spaced on the color wheel.



15941510



10454528



41866



36607

Rectangle

The Rectangle color scheme consists of four colors that form a rectangle on the color wheel.



15941510



14508833



41866



40937

Sweetspot

The Sweet Spot groups the original color and five complimentary colors.



15941510



16762845



11223027



8412779



0



8421504

Same Dimension

The Same Dimension uses a secret algorithm to generate beautiful new colors.



15941510



16718966



15946047



8023667



12189769



3866647

Inverse Universe

The Inverse Universe completely reimagines the original color for something new.



15941510



16718966



4186611



8023667



12189769



3866647

Previews

White Background



This preview shows how the Decimal color 15941510 looks on a white background.

Color Contrast Check

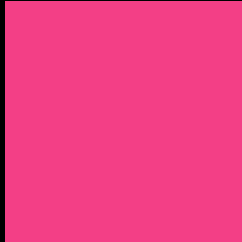
Large Text (above 18pt) WCAG AA ✓ Pass

Any Text WCAG AA × Fail

Large Text (above 18pt) WCAG AAA × Fail

Any Text WCAG AAA × Fail

Black Background



This preview shows how the Decimal color 15941510 looks on a black background.

Color Contrast Check

Large Text (above 18pt) WCAG AA ✓ Pass

Any Text WCAG AA ✓ Pass

Large Text (above 18pt) WCAG AAA ✓ Pass

Any Text WCAG AAA × Fail

If you want to check with other color combinations, try the [Color Contrast Checker](#).

Decimal 15941510 Background



This preview shows how black text looks on a background with the Decimal color 15941510.



This preview shows how white text looks on a background with the Decimal color 15941510.

Color Blindness Simulation

Color vision deficiency is a very complex topic, and I could not describe the different causes any better than Wikipedia does, so if you want to learn more, you should check out their [article about color blindness](#).

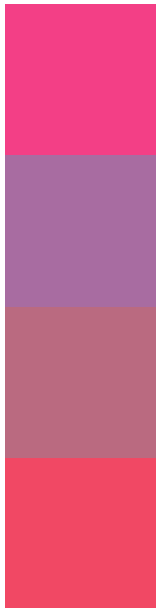
Dichromacy





Tritanopia
15748433

Trichromacy



Original Color
15941510

Protanomaly
11037857

Deuteranomaly
12216960

Tritanomaly
15812708

Monochromacy



Original Color
15941510

Achromatopsia
8224125

Achromatomaly
11036288

CSS Examples

Text

The CSS property to change the color of the text to Decimal 15941510 is called "color". The color property can be set on classes, ids or directly on the HTML element.

This example shows how text in the color #F33F86 looks like.

```
.text, #text, p{  
    color:#F33F86  
}
```

If you want to add a text shadow in that color use the text-shadow property, you can generate a text shadow directly with our [CSS Text Shadow Generator](#).

Here you see how black text with a 4 pixel #F33F86 colored shadow looks like.

```
.shadow{ text-shadow: 4px 4px 2px #F33F86
}
```

Border

The CSS property to change the border of an element to Decimal 15941510 is called "border". The border property can be set on classes, ids or directly on the HTML element.

This example shows the color as border, it can be applied via the CSS property "border" or "border-color".

```
.border, #border, table{ border:4px solid
#F33F86 }
```

If only the border color should be changed use the property `border-color`.

```
.border{ border-color:#F33F86 }
```

If you want to add a box shadow in that color use:

Here you see how a box with a 4 pixel #F33F86 colored shadow looks like.

```
.boxshadow{ -moz-box-shadow:4px 4px 4px  
4px #F33F86; -webkit-box-shadow:4px 4px  
4px 4px #F33F86; box-shadow:4px 4px 4px  
4px #F33F86 }
```

Background

The CSS property to change the background color of an element to Decimal 15941510 is called "background". The background property can be set on classes, ids or directly on the HTML element.

```
.background, #background, body{  
background:#F33F86 }
```

If only the background color should be changed can be used:

```
.background{ background-color:#F33F86 }
```

This example shows the color as background, it is applied via the CSS property "background".

To optimize and compress your CSS code, you can use our [online CSS compressor and optimizer](#) based on csstidy. If you want to create a linear or radial gradient as background or border, check our [CSS Gradient Generator](#).

Hey! You found this booklet interesting? Support Converting Colors with the new Membership Option!

The pro membership hides all ads, plus gives you double the colors in the color bucket, and more awesome pro features!

[Learn more, Memberships starting at \\$2.50/m!](#)

**Follow me
on Twitter!**

@ConvertingColor