

Converting Colors

Decimal(15948920)

Have a look what the booklet for
Decimal(15948920) contains.

Decimal(15948920)	3
<i>Conversions</i>	4
<i>Details</i>	6
<i>Harmonies</i>	11
<i>Previews</i>	23
<i>Color Blindness Simulation</i>	26
<i>CSS Examples</i>	29

Color

Decimal(15948920)

Conversions

Conversions Part 1

Format	Color
Hex	F35C78
RGB	243, 92, 120
RGB Percent	95%, 36%, 47%
CMY	0.0471, 0.6392, 0.5294
CMYK	0.00, 0.62, 0.51, 0.05
HSL	349°, 86%, 66%
HSV	349°, 62%, 95%
XYZ	44.1795, 28.0650, 20.8579
YIQ	140.3410, 81.0080, 40.7200

Conversions

Conversions Part 2

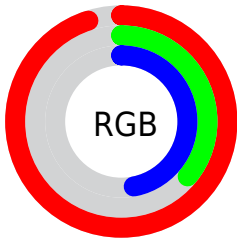
Format	Color
R _Y B	243, 92, 120
Decimal	15948920
CIE Lab	59.95, 59.95, 15.65
CIE LCh	60, 61.964, 14.631
Yxy	28.0650, 0.4745, 0.3014
Android (android.graphics.Color)	4294139000 (0xFFFF35C78)
YUV	140.3410, -10.0281, 90.0319
Hunter-Lab	52.9765, 56.1504, 13.7399

Details

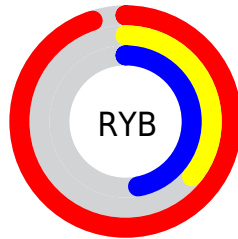
The Decimal color **15948920** is a light color, and the websafe version is hex **FF6699**. The color can be described as light muted rose. A complement of this color would be **6091735**, and the grayscale version is **9211020**.

A 20% lighter version of the original color is **16749740**, and **11869512** is the 20% darker color. If you saturate the color by 10%, you get **15942756**, and if you desaturate by 10%, it is **15955084**.

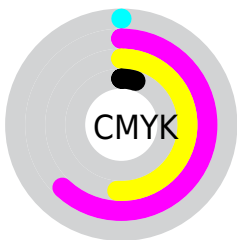
Distribution



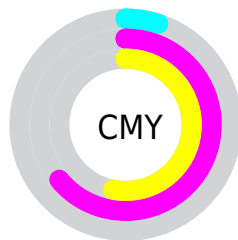
- Red (95%)
- Green (36%)
- Blue (47%)



- Red (95%)
- Yellow (36%)
- Blue (47%)



- Cyan (0%)
- Magenta (62%)
- Yellow (51%)
- Black (5%)



- Cyan (5%)
- Magenta (64%)
- Yellow (53%)

Brightness & Saturation Gradients

These gradients show how the Decimal color 15948920 changes by changing the brightness by 10 percent. The first figure shows a shift by +10% for each color and the second figure -10%.

Similar to the brightness gradients but the following saturation gradients show a change of the Decimal color 15948920 by changing the saturation by 10% instead.

 15948920

 15948920

16777215

 13909855

 16749740

 11869512

 16757191

 9895986

 16764643

 7929885

 16772095

 6029315

 4259843

 1966081

 0

 15948920

 15948920

 15942756

 15955084

 15936336

 15961504

 15930173

 15967667

 15925293

 15973831

 15979995

 15986415

 15990783

Harmonies

Analogous

The Analogous color harmony consists of three colors that are next to each other on the color wheel.



15032495



15948920



15035718

Triad

The Triadic color harmony groups three colors that are evenly spaced from another and form a triangle on the color wheel.



15948920



5481021



40698

Complementary

The Complementary color scheme is a pair of colors which are on the opposite of each other on the color wheel.



15948920



6091735

Split Complementary

Split-complementary colors differ from the complementary color scheme. The scheme consists of three colors, the original color and two neighbors of the complement color.



43228



15948920



43122

Square

The Square scheme is like the rectangle color scheme, but the four colors are evenly spaced on the color wheel.



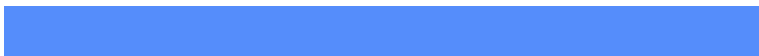
15948920



9672212



43690



5606907

Rectangle

The Rectangle color scheme consists of four colors that form a rectangle on the color wheel.



15948920



13663273



43690



41715

Sweetspot

The Sweet Spot groups the original color and five complimentary colors.



15948920



16764888



13982963



8413800



0



8421504

Same Dimension

The Same Dimension uses a secret algorithm to generate beautiful new colors.



15948920



16728163



15960412



8023664



12189731



3866635

Inverse Universe

The Inverse Universe completely reimagines the original color for something new.



15948920



16728163



6080243



8023664



12189731



3866635

Previews

White Background



This preview shows how the Decimal color 15948920 looks on a white background.

Color Contrast Check

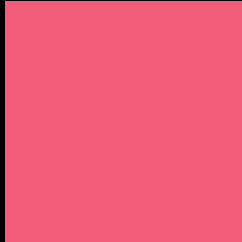
Large Text (above 18pt) WCAG AA ✓ Pass

Any Text WCAG AA × Fail

Large Text (above 18pt) WCAG AAA × Fail

Any Text WCAG AAA × Fail

Black Background



This preview shows how the Decimal color 15948920 looks on a black background.

Color Contrast Check

Large Text (above 18pt) WCAG AA ✓ Pass

Any Text WCAG AA ✓ Pass

Large Text (above 18pt) WCAG AAA ✓ Pass

Any Text WCAG AAA × Fail

If you want to check with other color combinations, try the [Color Contrast Checker](#).

Decimal 15948920 Background



This preview shows how black text looks on a background with the Decimal color 15948920.




This preview shows how white text looks on a background with the Decimal color 15948920.

Color Blindness Simulation

Color vision deficiency is a very complex topic, and I could not describe the different causes any better than Wikipedia does, so if you want to learn more, you should check out their [article about color blindness](#).

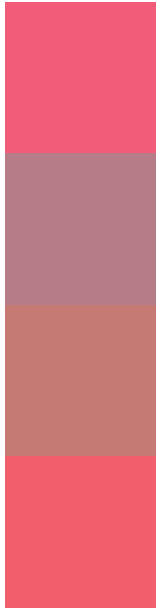
Dichromacy





Tritanopia
15884133

Trichromacy



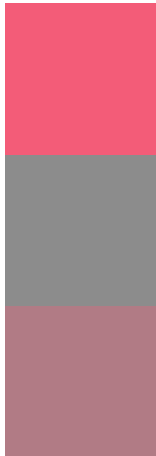
Original Color
15948920

Protanomaly
11959689

Deuteranomaly
12941940

Tritanomaly
15883884

Monochromacy



Original Color
15948920

Achromatopsia
9211020

Achromatomaly
11631493

CSS Examples

Text

The CSS property to change the color of the text to Decimal 15948920 is called "color". The color property can be set on classes, ids or directly on the HTML element.

This example shows how text in the color #F35C78 looks like.

```
.text, #text, p{  
    color:#F35C78  
}
```

If you want to add a text shadow in that color use the text-shadow property, you can generate a text shadow directly with our [CSS Text Shadow Generator](#).

Here you see how black text with a 4 pixel #F35C78 colored shadow looks like.

```
.shadow{ text-shadow: 4px 4px 2px #F35C78
}
```

Border

The CSS property to change the border of an element to Decimal 15948920 is called "border". The border property can be set on classes, ids or directly on the HTML element.

This example shows the color as border, it can be applied via the CSS property "border" or "border-color".

```
.border, #border, table{ border:4px solid
#F35C78 }
```

If only the border color should be changed use the property `border-color`.

```
.border{ border-color:#F35C78 }
```

If you want to add a box shadow in that color use:

Here you see how a box with a 4 pixel #F35C78 colored shadow looks like.

```
.boxshadow{ -moz-box-shadow:4px 4px 4px  
4px #F35C78; -webkit-box-shadow:4px 4px  
4px 4px #F35C78; box-shadow:4px 4px 4px  
4px #F35C78 }
```

Background

The CSS property to change the background color of an element to Decimal 15948920 is called "background". The background property can be set on classes, ids or directly on the HTML element.

```
.background, #background, body{  
background:#F35C78 }
```

If only the background color should be changed can be used:

```
.background{ background-color:#F35C78 }
```

This example shows the color as background, it is applied via the CSS property "background".

To optimize and compress your CSS code, you can use our [online CSS compressor and optimizer](#) based on csstidy. If you want to create a linear or radial gradient as background or border, check our [CSS Gradient Generator](#).

Hey! You found this booklet interesting? Support Converting Colors with the new Membership Option!

The pro membership hides all ads, plus gives you double the colors in the color bucket, and more awesome pro features!

[Learn more, Memberships starting at \\$2.50/m!](#)

**Follow me
on Twitter!**

@ConvertingColor