

Converting Colors

Decimal(15955858)

Have a look what the booklet for
Decimal(15955858) contains.

Decimal(15955858)	3
<i>Conversions</i>	4
<i>Details</i>	6
<i>Harmonies</i>	11
<i>Previews</i>	23
<i>Color Blindness Simulation</i>	26
<i>CSS Examples</i>	29

Color

Decimal(15955858)

Conversions

Conversions Part 1

Format	Color
Hex	F37792
RGB	243, 119, 146
RGB Percent	95%, 47%, 57%
CMY	0.0471, 0.5333, 0.4275
CMYK	0.00, 0.51, 0.40, 0.05
HSL	347°, 84%, 71%
HSV	347°, 51%, 95%
XYZ	48.7473, 34.3237, 31.2500
YIQ	159.1540, 65.2370, 34.6850

Conversions

Conversions Part 2

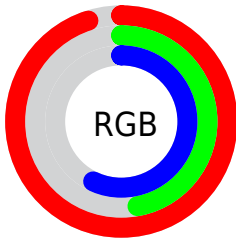
Format	Color
R_{YB}	243, 119, 146
Decimal	15955858
CIE _{Lab}	65.22, 50.15, 8.11
CIE _{LCh}	65, 50.799, 9.184
Yxy	34.3237, 0.4264, 0.3002
Android (android.graphics.Color)	4294145938 (0xFFFF37792)
YUV	159.1540, -6.4849, 73.5329
Hunter-Lab	58.5864, 45.9962, 9.3852

Details

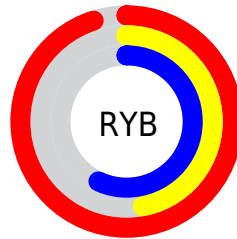
The Decimal color **15955858** is a light color, and the websafe version is hex **FF6699**. A complement of this color would be **7861208**, and the grayscale version is **10461087**.

A 20% lighter version of the original color is **16756424**, and **12009824** is the 20% darker color. If you saturate the color by 10%, you get **15949695**, and if you desaturate by 10%, it is **15962021**.

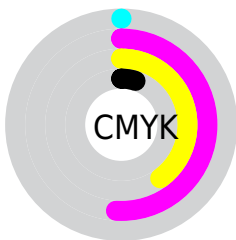
Distribution



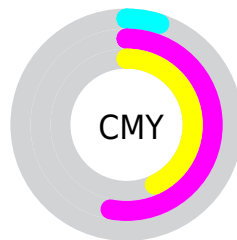
- Red (95%)
- Green (47%)
- Blue (57%)



- Red (95%)
- Yellow (47%)
- Blue (57%)



- Cyan (0%)
- Magenta (51%)
- Yellow (40%)
- Black (5%)



- Cyan (5%)
- Magenta (53%)
- Yellow (43%)

Brightness & Saturation Gradients

These gradients show how the Decimal color 15955858 changes by changing the brightness by 10 percent. The first figure shows a shift by +10% for each color and the second figure -10%.

Similar to the brightness gradients but the following saturation gradients show a change of the Decimal color 15955858 by changing the saturation by 10% instead.

 15955858

 15955858

16777215

 13982840

 16756424

 12009824

 16763876

 10101832

 16771071

 8192050

 6357021

 4587522

 2752513

 0

 15955858

 15955858

 15949695

 15962021

 15943276

 15968440

 15937113

 15974603

 15930950

 15980766

 15925301

 15986929

 15990783

Harmonies

Analogous

The Analogous color harmony consists of three colors that are next to each other on the color wheel.



14777536



15955858



15499367

Triad

The Triadic color harmony groups three colors that are evenly spaced from another and form a triangle on the color wheel.



15955858



8039509



44275

Complementary

The Complementary color scheme is a pair of colors which are on the opposite of each other on the color wheel.



15955858



7861208

Split Complementary

Split-complementary colors differ from the complementary color scheme. The scheme consists of three colors, the original color and two neighbors of the complement color.



46039



15955858



3322748

Square

The Square scheme is like the rectangle color scheme, but the four colors are evenly spaced on the color wheel.



15955858



11247680



46507



6856440

Rectangle

The Rectangle color scheme consists of four colors that form a rectangle on the color wheel.



15955858



14519121



46507



45036

Sweetspot

The Sweet Spot groups the original color and five complimentary colors.



15955858



16767457



14055411



8415598



0



8421504

Same Dimension

The Same Dimension uses a secret algorithm to generate beautiful new colors.



15955858



16737157



15964279



8023665



12189737



3866637

Inverse Universe

The Inverse Universe completely reimagines the original color for something new.



15955858



16737157



7852787



8023665



12189737



3866637

Previews

White Background



This preview shows how the Decimal color 15955858 looks on a white background.

Color Contrast Check

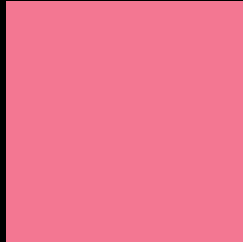
Large Text (above 18pt) WCAG AA × Fail

Any Text WCAG AA × Fail

Large Text (above 18pt) WCAG AAA × Fail

Any Text WCAG AAA × Fail

Black Background



This preview shows how the Decimal color 15955858 looks on a black background.

Color Contrast Check

Large Text (above 18pt) WCAG AA ✓ Pass

Any Text WCAG AA ✓ Pass

Large Text (above 18pt) WCAG AAA ✓ Pass

Any Text WCAG AAA ✓ Pass

If you want to check with other color combinations, try the [Color Contrast Checker](#).

Decimal 15955858 Background



This preview shows how black text looks on a background with the Decimal color 15955858.



This preview shows how white text looks on a background with the Decimal color 15955858.

Color Blindness Simulation

Color vision deficiency is a very complex topic, and I could not describe the different causes any better than Wikipedia does, so if you want to learn more, you should check out their [article about color blindness](#).

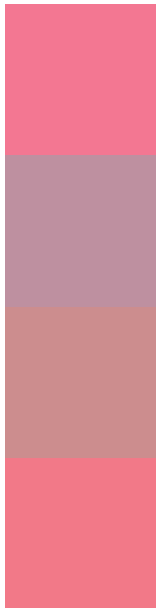
Dichromacy





Tritanopia
15891074

Trichromacy



Original Color
15955858

Protanomaly
12488864

Deuteranomaly
13405582

Tritanomaly
15890824

Monochromacy



Original Color
15955858

Achromatopsia
10461087

Achromatomaly
12488858

CSS Examples

Text

The CSS property to change the color of the text to Decimal 15955858 is called "color". The color property can be set on classes, ids or directly on the HTML element.

This example shows how text in the color #F37792 looks like.

```
.text, #text, p{  
    color:#F37792  
}
```

If you want to add a text shadow in that color use the text-shadow property, you can generate a text shadow directly with our [CSS Text Shadow Generator](#).

Here you see how black text with a 4 pixel #F37792 colored shadow looks like.

```
.shadow{ text-shadow: 4px 4px 2px #F37792
}
```

Border

The CSS property to change the border of an element to Decimal 15955858 is called "border". The border property can be set on classes, ids or directly on the HTML element.

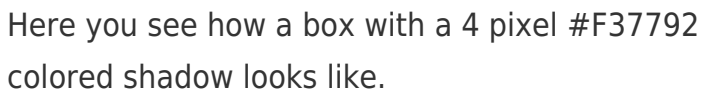
This example shows the color as border, it can be applied via the CSS property "border" or "border-color".

```
.border, #border, table{ border:4px solid
#F37792 }
```

If only the border color should be changed use the property `border-color`.

```
.border{ border-color:#F37792 }
```

If you want to add a box shadow in that color use:



Here you see how a box with a 4 pixel #F37792 colored shadow looks like.

```
.boxshadow{ -moz-box-shadow:4px 4px 4px  
4px #F37792; -webkit-box-shadow:4px 4px  
4px 4px #F37792; box-shadow:4px 4px 4px  
4px #F37792 }
```

Background

The CSS property to change the background color of an element to Decimal 15955858 is called "background". The background property can be set on classes, ids or directly on the HTML element.

```
.background, #background, body{  
background:#F37792 }
```

If only the background color should be changed can be used:

```
.background{ background-color:#F37792 }
```

This example shows the color as background, it is applied via the CSS property "background".

To optimize and compress your CSS code, you can use our [online CSS compressor and optimizer](#) based on csstidy. If you want to create a linear or radial gradient as background or border, check our [CSS Gradient Generator](#).

Hey! You found this booklet interesting? Support Converting Colors with the new Membership Option!

The pro membership hides all ads, plus gives you double the colors in the color bucket, and more awesome pro features!

[Learn more, Memberships starting at \\$2.50/m!](#)

**Follow me
on Twitter!**

@ConvertingColor