

# Converting Colors

Decimal(15961508)

Have a look what the booklet for  
Decimal(15961508) contains.

<b>Decimal(15961508)</b> .....	3
<i><b>Conversions</b></i> .....	4
<i><b>Details</b></i> .....	6
<i><b>Harmonies</b></i> .....	11
<i><b>Previews</b></i> .....	23
<i><b>Color Blindness Simulation</b></i> .....	26
<i><b>CSS Examples</b></i> .....	29

# **Color**

**Decimal(15961508)**

# Conversions

## Conversions Part 1

Format	Color
Hex	F38DA4
RGB	243, 141, 164
RGB Percent	95%, 55%, 64%
CMY	0.0471, 0.4471, 0.3569
CMYK	0.00, 0.42, 0.33, 0.05
HSL	346°, 81%, 75%
HSV	346°, 42%, 95%
XYZ	53.1879, 40.7848, 40.1909
YIQ	174.1200, 53.4090, 28.7770

# Conversions

## Conversions Part 2

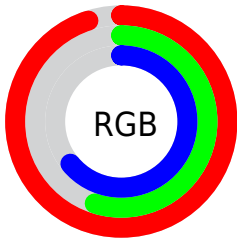
<b>Format</b>	<b>Color</b>
<b>R<sub>YB</sub></b>	243, 141, 164
Decimal	15961508
CIE <sub>Lab</sub>	70.02, 41.23, 4.85
CIE <sub>LCh</sub>	70, 41.517, 6.711
Yxy	40.7848, 0.3964, 0.3040
Android (android.graphics.Color)	4294151588 (0xFFFF38DA4)
YUV	174.1200, -4.9892, 60.4078
Hunter-Lab	63.8630, 36.9024, 7.3911

# Details

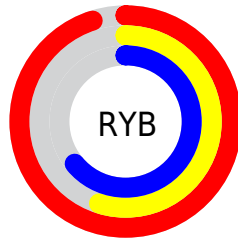
The Decimal color **15961508** is a light color, and the websafe version is hex **FF9999**. A complement of this color would be **9303004**, and the grayscale version is **11447982**.

A 20% lighter version of the original color is **16762075**, and **12081264** is the 20% darker color. If you saturate the color by 10%, you get **15955345**, and if you desaturate by 10%, it is **15967671**.

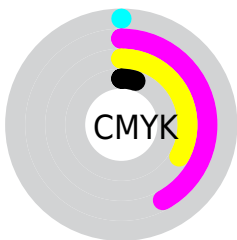
# Distribution



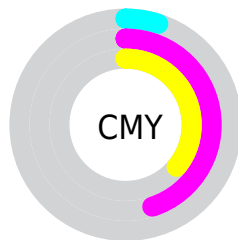
- Red (95%)
- Green (55%)
- Blue (64%)



- Red (95%)
- Yellow (55%)
- Blue (64%)



- Cyan (0%)
- Magenta (42%)
- Yellow (33%)
- Black (5%)



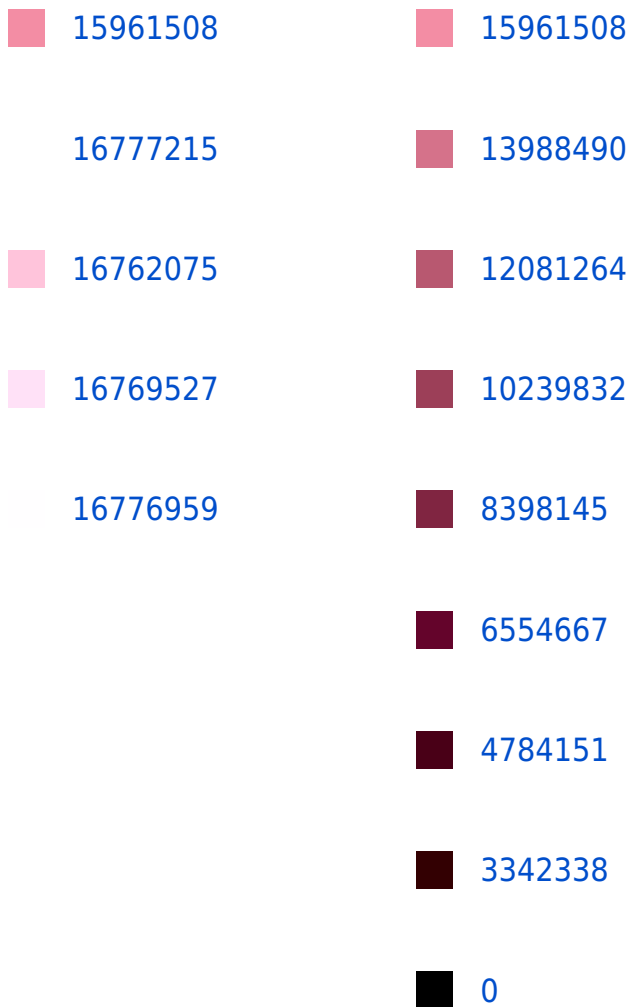
- Cyan (5%)
- Magenta (45%)
- Yellow (36%)

# Brightness & Saturation Gradients

These gradients show how the Decimal color 15961508 changes by changing the brightness by 10 percent. The first figure shows a shift by +10% for each color and the second figure -10%.

Similar to the brightness gradients but the following saturation gradients show a change of the Decimal color 15961508 by changing the saturation by 10% instead.





15961508 15961508

 15955345

 15967671

 15948926

 15974090

 15942764

 15980252

 15936601

 15986415

 15930438

 15990783

 15925303

# Harmonies

## Analogous

The Analogous color harmony consists of three colors that are next to each other on the color wheel.



14783178



15961508



15766144

# Triad

The Triadic color harmony groups three colors that are evenly spaced from another and form a triangle on the color wheel.



15961508



9680493



3192816

# Complementary

The Complementary color scheme is a pair of colors which are on the opposite of each other on the color wheel.



15961508



9303004

# Split Complementary

Split-complementary colors differ from the complementary color scheme. The scheme consists of three colors, the original color and two neighbors of the complement color.



48599



15961508



6536588

# Square

The Square scheme is like the rectangle color scheme, but the four colors are evenly spaced on the color wheel.



15961508



12299359



1818547



8432886

# Rectangle

The Rectangle color scheme consists of four colors that form a rectangle on the color wheel.



15961508



14981741



1818547



47849



# Sweetspot

The Sweet Spot groups the original color and five complimentary colors.



15961508



16768741



14388723



8416112



0



8421504



# Same Dimension

The Same Dimension uses a secret algorithm to generate beautiful new colors.



15961508



16744604



15968397



8023665



12189738



3866637



# Inverse Universe

The Inverse Universe completely reimagines the original color for something new.



15961508



16744604



9296115



8023665



12189738



3866637



# Previews

## White Background



This preview shows how the Decimal color 15961508 looks on a white background.

## Color Contrast Check

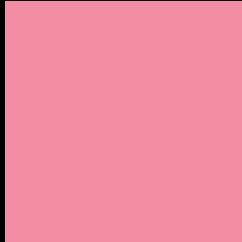
Large Text (above 18pt) WCAG AA × Fail

Any Text WCAG AA × Fail

Large Text (above 18pt) WCAG AAA × Fail

Any Text WCAG AAA × Fail

# Black Background



This preview shows how the Decimal color 15961508 looks on a black background.

## Color Contrast Check

Large Text (above 18pt) WCAG AA ✓ Pass

Any Text WCAG AA ✓ Pass

Large Text (above 18pt) WCAG AAA ✓ Pass

Any Text WCAG AAA ✓ Pass

If you want to check with other color combinations, try the [Color Contrast Checker](#).



## Decimal 15961508 Background



This preview shows how black text looks on a background with the Decimal color 15961508.



This preview shows how white text looks on a background with the Decimal color 15961508.

# Color Blindness Simulation

Color vision deficiency is a very complex topic, and I could not describe the different causes any better than Wikipedia does, so if you want to learn more, you should check out their [article about color blindness](#).

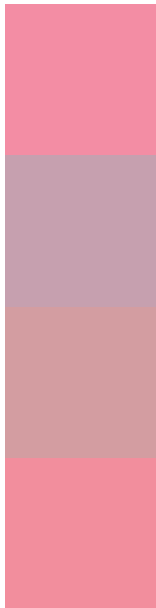
## Dichromacy





**Tritanopia**  
15896473

# Trichromacy



**Original Color**  
15961508

**Protanomaly**  
13017263

**Deuteranomaly**  
13868449

**Tritanomaly**  
15896221

# Monochromacy



**Original Color**  
15961508

**Achromatopsia**  
11447982

**Achromatomaly**  
13083306

# CSS Examples

## Text

The CSS property to change the color of the text to Decimal 15961508 is called "color". The color property can be set on classes, ids or directly on the HTML element.

This example shows how text in the color #F38DA4 looks like.

```
.text, #text, p{  
    color:#F38DA4  
}
```

If you want to add a text shadow in that color use the text-shadow property, you can generate a text shadow directly with our [CSS Text Shadow Generator](#).

Here you see how black text with a 4 pixel #F38DA4 colored shadow looks like.

```
.shadow{ text-shadow: 4px 4px 2px #F38DA4
}
```

## Border

The CSS property to change the border of an element to Decimal 15961508 is called "border". The border property can be set on classes, ids or directly on the HTML element.

This example shows the color as border, it can be applied via the CSS property "border" or "border-color".

```
.border, #border, table{ border:4px solid
#F38DA4 }
```

If only the border color should be changed use the property `border-color`.

```
.border{ border-color:#F38DA4 }
```

If you want to add a box shadow in that color use:

Here you see how a box with a 4 pixel #F38DA4 colored shadow looks like.

```
.boxshadow{ -moz-box-shadow:4px 4px 4px  
4px #F38DA4; -webkit-box-shadow:4px 4px  
4px 4px #F38DA4; box-shadow:4px 4px 4px  
4px #F38DA4 }
```

# Background

The CSS property to change the background color of an element to Decimal 15961508 is called "background". The background property can be set on classes, ids or directly on the HTML element.

```
.background, #background, body{  
background:#F38DA4 }
```

If only the background color should be changed can be used:

```
.background{ background-color:#F38DA4 }
```

This example shows the color as background, it is applied via the CSS property "background".

To optimize and compress your CSS code, you can use our [online CSS compressor and optimizer](#) based on csstidy. If you want to create a linear or radial gradient as background or border, check our [CSS Gradient Generator](#).



Hey! You found this booklet interesting? Support Converting Colors with the new Membership Option!

The pro membership hides all ads, plus gives you double the colors in the color bucket, and more awesome pro features!

**[Learn more, Memberships starting at \\$2.50/m!](#)**

**Follow me  
on Twitter!**

@ConvertingColor