

# Converting Colors

Decimal(15961757)

Have a look what the booklet for  
Decimal(15961757) contains.

<b>Decimal(15961757)</b> .....	3
<i><b>Conversions</b></i> .....	4
<i><b>Details</b></i> .....	6
<i><b>Harmonies</b></i> .....	11
<i><b>Previews</b></i> .....	23
<i><b>Color Blindness Simulation</b></i> .....	26
<i><b>CSS Examples</b></i> .....	29

# **Color**

**Decimal(15961757)**

# Conversions

## Conversions Part 1

<b>Format</b>	<b>Color</b>
Hex	F38E9D
RGB	243, 142, 157
RGB Percent	95%, 56%, 62%
CMY	0.0471, 0.4431, 0.3843
CMYK	0.00, 0.42, 0.35, 0.05
HSL	351°, 81%, 75%
HSV	351°, 42%, 95%
XYZ	52.7210, 40.8350, 37.0015
YIQ	173.9090, 55.3810, 26.0770

# Conversions

## Conversions Part 2

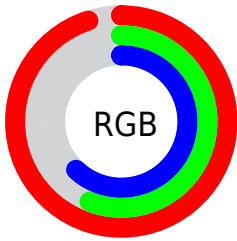
<b>Format</b>	<b>Color</b>
<b>R<sub>YB</sub></b>	243, 142, 157
Decimal	15961757
CIE <sub>Lab</sub>	70.06, 39.87, 8.81
CIE <sub>LCh</sub>	70, 40.833, 12.463
Yxy	40.8350, 0.4038, 0.3128
Android (android.graphics.Color)	4294151837 (0xFFFF38E9D)
YUV	173.9090, -8.3361, 60.5928
Hunter-Lab	63.9023, 35.4379, 10.4007

# Details

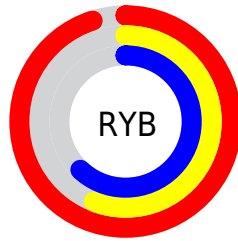
The Decimal color **15961757** is a light color, and the websafe version is hex **FF9999**. A complement of this color would be **9368548**, and the grayscale version is **11447982**.

A 20% lighter version of the original color is **16762323**, and **12081514** is the 20% darker color. If you saturate the color by 10%, you get **15955592**, and if you desaturate by 10%, it is **15967922**.

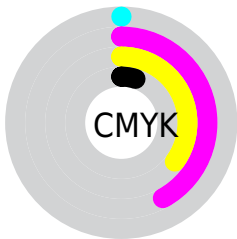
# Distribution



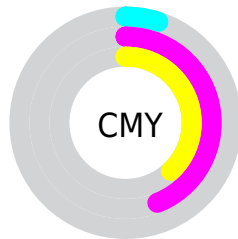
- Red (95%)
- Green (56%)
- Blue (62%)



- Red (95%)
- Yellow (56%)
- Blue (62%)



- Cyan (0%)
- Magenta (42%)
- Yellow (35%)
- Black (5%)



- Cyan (5%)
- Magenta (44%)
- Yellow (38%)

# Brightness & Saturation Gradients

These gradients show how the Decimal color 15961757 changes by changing the brightness by 10 percent. The first figure shows a shift by +10% for each color and the second figure -10%.

Similar to the brightness gradients but the following saturation gradients show a change of the Decimal color 15961757 by changing the saturation by 10% instead.



 15961757

 15961757

16777215

 13988739

 16762323

 12081514

 16769776

 10240082

 8332859

 6555685

 4784145

 3276802

 0

 15961757

 15961757

 15955592

 15967922

 15949172

 15974342

 15943007

 15980507

 15936842

 15986672

 15930678

 15990783

 15925284

# Harmonies

## Analogous

The Analogous color harmony consists of three colors that are next to each other on the color wheel.



15110595



15961757



15504763

# Triad

The Triadic color harmony groups three colors that are evenly spaced from another and form a triangle on the color wheel.



15961757



9156723



4699633

# Complementary

The Complementary color scheme is a pair of colors which are on the opposite of each other on the color wheel.



15961757



9368548

# Split Complementary

Split-complementary colors differ from the complementary color scheme. The scheme consists of three colors, the original color and two neighbors of the complement color.



48348



15961757



5946772

# Square

The Square scheme is like the rectangle color scheme, but the four colors are evenly spaced on the color wheel.



15961757



11841121



704442



9349875

# Rectangle

The Rectangle color scheme consists of four colors that form a rectangle on the color wheel.



15961757



14654826



704442



2668780



# Sweetspot

The Sweet Spot groups the original color and five complimentary colors.



15961757



16769253



14978803



8416880



0



8421504



# Same Dimension

The Same Dimension uses a secret algorithm to generate beautiful new colors.



15961757



16744594



15970702



8023664



12189724



3866633



# Inverse Universe

The Inverse Universe completely reimagines the original color for something new.



15961757



16744594



9359603



8023664



12189724



3866633



# Previews

## White Background



This preview shows how the Decimal color 15961757 looks on a white background.

## Color Contrast Check

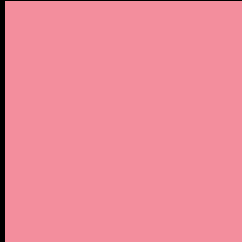
Large Text (above 18pt) WCAG AA × Fail

Any Text WCAG AA × Fail

Large Text (above 18pt) WCAG AAA × Fail

Any Text WCAG AAA × Fail

# Black Background



This preview shows how the Decimal color 15961757 looks on a black background.

## Color Contrast Check

Large Text (above 18pt) WCAG AA ✓ Pass

Any Text WCAG AA ✓ Pass

Large Text (above 18pt) WCAG AAA ✓ Pass

Any Text WCAG AAA ✓ Pass

If you want to check with other color combinations, try the [Color Contrast Checker](#).



## Decimal 15961757 Background



This preview shows how black text looks on a background with the Decimal color 15961757.




This preview shows how white text looks on a background with the Decimal color 15961757.

# Color Blindness Simulation

Color vision deficiency is a very complex topic, and I could not describe the different causes any better than Wikipedia does, so if you want to learn more, you should check out their [article about color blindness](#).

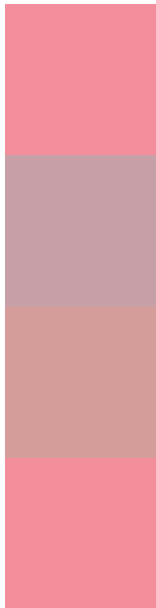
## Dichromacy





**Tritanopia**  
15962009

# Trichromacy



**Original Color**  
15961757

**Protanomaly**  
13082791

**Deuteranomaly**  
13933978

**Tritanomaly**  
15962010

# Monochromacy



**Original Color**  
15961757

**Achromatopsia**  
11447982

**Achromatomaly**  
13083304

# CSS Examples

## Text

The CSS property to change the color of the text to Decimal 15961757 is called "color". The color property can be set on classes, ids or directly on the HTML element.

This example shows how text in the color #F38E9D looks like.

```
.text, #text, p{  
    color:#F38E9D  
}
```

If you want to add a text shadow in that color use the text-shadow property, you can generate a text shadow directly with our [CSS Text Shadow Generator](#).

Here you see how black text with a 4 pixel #F38E9D colored shadow looks like.

```
.shadow{ text-shadow: 4px 4px 2px #F38E9D
}
```

## Border

The CSS property to change the border of an element to Decimal 15961757 is called "border". The border property can be set on classes, ids or directly on the HTML element.

This example shows the color as border, it can be applied via the CSS property "border" or "border-color".

```
.border, #border, table{ border:4px solid
#F38E9D }
```

If only the border color should be changed use the property `border-color`.

```
.border{ border-color:#F38E9D }
```

If you want to add a box shadow in that color use:

Here you see how a box with a 4 pixel #F38E9D colored shadow looks like.

```
.boxshadow{ -moz-box-shadow:4px 4px 4px  
4px #F38E9D; -webkit-box-shadow:4px 4px  
4px 4px #F38E9D; box-shadow:4px 4px 4px  
4px #F38E9D }
```

# Background

The CSS property to change the background color of an element to Decimal 15961757 is called "background". The background property can be set on classes, ids or directly on the HTML element.

```
.background, #background, body{  
background:#F38E9D }
```

If only the background color should be changed can be used:

```
.background{ background-color:#F38E9D }
```

This example shows the color as background, it is applied via the CSS property "background".

To optimize and compress your CSS code, you can use our [online CSS compressor and optimizer](#) based on csstidy. If you want to create a linear or radial gradient as background or border, check our [CSS Gradient Generator](#).



Hey! You found this booklet interesting? Support Converting Colors with the new Membership Option!

The pro membership hides all ads, plus gives you double the colors in the color bucket, and more awesome pro features!

**[Learn more, Memberships starting at \\$2.50/m!](#)**

**Follow me  
on Twitter!**

@ConvertingColor