

Converting Colors

Decimal(15962281)

Have a look what the booklet for
Decimal(15962281) contains.

Decimal(15962281)	3
<i>Conversions</i>	4
<i>Details</i>	6
<i>Harmonies</i>	11
<i>Previews</i>	23
<i>Color Blindness Simulation</i>	26
<i>CSS Examples</i>	29

Color

Decimal(15962281)

Conversions

Conversions Part 1

Format	Color
Hex	F390A9
RGB	243, 144, 169
RGB Percent	95%, 56%, 66%
CMY	0.0471, 0.4353, 0.3373
CMYK	0.00, 0.41, 0.30, 0.05
HSL	345°, 80%, 76%
HSV	345°, 41%, 95%
XYZ	54.0968, 41.8658, 42.7658
YIQ	176.4510, 50.9790, 28.7630

Conversions

Conversions Part 2

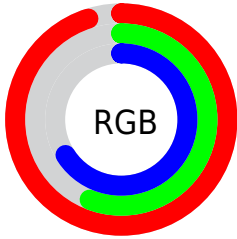
Format	Color
R_{YB}	243, 144, 169
Decimal	15962281
CIE _{Lab}	70.78, 40.32, 3.15
CIE _{LCh}	71, 40.442, 4.467
Yxy	41.8658, 0.3899, 0.3018
Android (android.graphics.Color)	4294152361 (0xFF390A9)
YUV	176.4510, -3.6733, 58.3635
Hunter-Lab	64.7038, 36.0068, 6.1051

Details

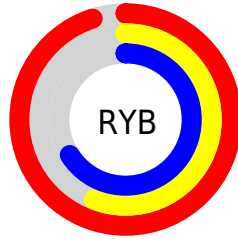
The Decimal color **15962281** is a light color, and the websafe version is hex **FF9999**. A complement of this color would be **9499610**, and the grayscale version is **11579568**.

A 20% lighter version of the original color is **16762848**, and **12082037** is the 20% darker color. If you saturate the color by 10%, you get **15956119**, and if you desaturate by 10%, it is **15968443**.

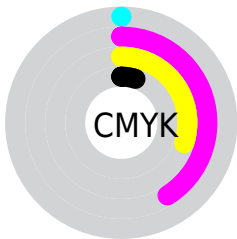
Distribution



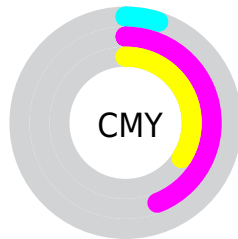
- Red (95%)
- Green (56%)
- Blue (66%)



- Red (95%)
- Yellow (56%)
- Blue (66%)



- Cyan (0%)
- Magenta (41%)
- Yellow (30%)
- Black (5%)



- Cyan (5%)
- Magenta (44%)
- Yellow (34%)

Brightness & Saturation Gradients

These gradients show how the Decimal color 15962281 changes by changing the brightness by 10 percent. The first figure shows a shift by +10% for each color and the second figure -10%.

Similar to the brightness gradients but the following saturation gradients show a change of the Decimal color 15962281 by changing the saturation by 10% instead.

 15962281

 15962281

16777215

 13989263

 16762848

 12082037

 16770301

 10240604

 8398917

 6621743

 4849690

 3407873

 65536

 0

 15962281

 15962281

 15956119

 15968443

 15949701

 15974861

 15943539

 15981023

 15937376

 15987186

 15931214

 15990783

 15925309

Harmonies

Analogous

The Analogous color harmony consists of three colors that are next to each other on the color wheel.



14718414



15962281



15897989

Triad

The Triadic color harmony groups three colors that are evenly spaced from another and form a triangle on the color wheel.



15962281



10073967



3586543

Complementary

The Complementary color scheme is a pair of colors which are on the opposite of each other on the color wheel.



15962281



9499610

Split Complementary

Split-complementary colors differ from the complementary color scheme. The scheme consists of three colors, the original color and two neighbors of the complement color.



49110



15962281



7061132

Square

The Square scheme is like the rectangle color scheme, but the four colors are evenly spaced on the color wheel.



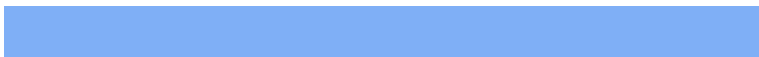
15962281



12627299



3260850



8368118

Rectangle

The Rectangle color scheme consists of four colors that form a rectangle on the color wheel.



15962281



15178867



3260850



1096936

Sweetspot

The Sweet Spot groups the original color and five complimentary colors.



15962281



16769256



14258419



8416882



0



8421504

Same Dimension

The Same Dimension uses a secret algorithm to generate beautiful new colors.



15962281



16745122



15968144



8023665



12189743



3866639

Inverse Universe

The Inverse Universe completely reimagines the original color for something new.



15962281



16745122



9493747



8023665



12189743



3866639

Previews

White Background



This preview shows how the Decimal color 15962281 looks on a white background.

Color Contrast Check

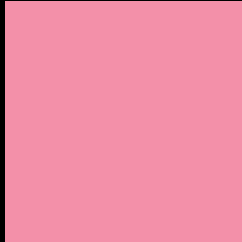
Large Text (above 18pt) WCAG AA × Fail

Any Text WCAG AA × Fail

Large Text (above 18pt) WCAG AAA × Fail

Any Text WCAG AAA × Fail

Black Background



This preview shows how the Decimal color 15962281 looks on a black background.

Color Contrast Check

Large Text (above 18pt) WCAG AA ✓ Pass

Any Text WCAG AA ✓ Pass

Large Text (above 18pt) WCAG AAA ✓ Pass

Any Text WCAG AAA ✓ Pass

If you want to check with other color combinations, try the [Color Contrast Checker](#).

Decimal 15962281 Background



This preview shows how black text looks on a background with the Decimal color 15962281.



This preview shows how white text looks on a background with the Decimal color 15962281.

Color Blindness Simulation

Color vision deficiency is a very complex topic, and I could not describe the different causes any better than Wikipedia does, so if you want to learn more, you should check out their [article about color blindness](#).

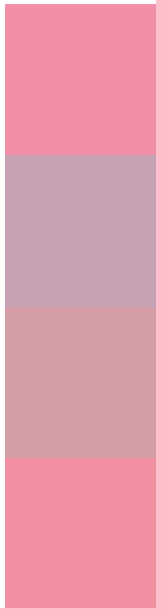
Dichromacy





Tritanopia
15897245

Trichromacy



Original Color
15962281

Protanomaly
13017780

Deuteranomaly
13934502

Tritanomaly
15896993

Monochromacy



Original Color
15962281

Achromatopsia
11579568

Achromatomaly
13149357

CSS Examples

Text

The CSS property to change the color of the text to Decimal 15962281 is called "color". The color property can be set on classes, ids or directly on the HTML element.

This example shows how text in the color #F390A9 looks like.

```
.text, #text, p{  
  color:#F390A9  
}
```

If you want to add a text shadow in that color use the text-shadow property, you can generate a text shadow directly with our [CSS Text Shadow Generator](#).

Here you see how black text with a 4 pixel #F390A9 colored shadow looks like.

```
.shadow{ text-shadow: 4px 4px 2px #F390A9
}
```

Border

The CSS property to change the border of an element to Decimal 15962281 is called "border". The border property can be set on classes, ids or directly on the HTML element.

This example shows the color as border, it can be applied via the CSS property "border" or "border-color".

```
.border, #border, table{ border:4px solid
#F390A9 }
```

If only the border color should be changed use the property `border-color`.

```
.border{ border-color:#F390A9 }
```

If you want to add a box shadow in that color use:

Here you see how a box with a 4 pixel #F390A9 colored shadow looks like.

```
.boxshadow{ -moz-box-shadow:4px 4px 4px  
4px #F390A9; -webkit-box-shadow:4px 4px  
4px 4px #F390A9; box-shadow:4px 4px 4px  
4px #F390A9 }
```

Background

The CSS property to change the background color of an element to Decimal 15962281 is called "background". The background property can be set on classes, ids or directly on the HTML element.

```
.background, #background, body{  
background:#F390A9 }
```

If only the background color should be changed can be used:

```
.background{ background-color:#F390A9 }
```

This example shows the color as background, it is applied via the CSS property "background".

To optimize and compress your CSS code, you can use our [online CSS compressor and optimizer](#) based on csstidy. If you want to create a linear or radial gradient as background or border, check our [CSS Gradient Generator](#).

Hey! You found this booklet interesting? Support Converting Colors with the new Membership Option!

The pro membership hides all ads, plus gives you double the colors in the color bucket, and more awesome pro features!

[Learn more, Memberships starting at \\$2.50/m!](#)

**Follow me
on Twitter!**

@ConvertingColor