

Converting Colors

Decimal(16021129)

Have a look what the booklet for
Decimal(16021129) contains.

Decimal(16021129)	3
<i>Conversions</i>	4
<i>Details</i>	6
<i>Harmonies</i>	11
<i>Previews</i>	23
<i>Color Blindness Simulation</i>	26
<i>CSS Examples</i>	29

Color

Decimal(16021129)

Conversions

Conversions Part 1

Format	Color
Hex	F47689
RGB	244, 118, 137
RGB Percent	96%, 46%, 54%
CMY	0.0431, 0.5373, 0.4627
CMYK	0.00, 0.52, 0.44, 0.04
HSL	351°, 85%, 71%
HSV	351°, 52%, 96%
XYZ	48.3020, 33.9961, 27.6830
YIQ	157.8400, 68.9970, 32.6210

Conversions

Conversions Part 2

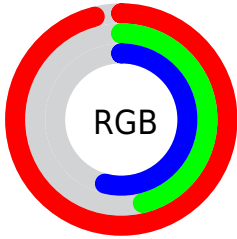
Format	Color
R_{YB}	244, 118, 137
Decimal	16021129
CIE _{Lab}	64.96, 50.04, 12.88
CIE _{LCh}	65, 51.674, 14.438
Yxy	33.9961, 0.4392, 0.3091
Android (android.graphics.Color)	4294211209 (0xFFFF47689)
YUV	157.8400, -10.2741, 75.5623
Hunter-Lab	58.3062, 45.8372, 12.6642

Details

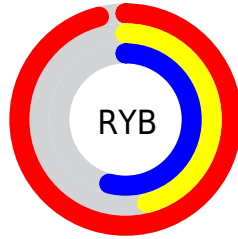
The Decimal color **16021129** is a light color, and the websafe version is hex **CC6666**. A complement of this color would be **7795937**, and the grayscale version is **10395294**.

A 20% lighter version of the original color is **16756158**, and **12075095** is the 20% darker color. If you saturate the color by 10%, you get **16014964**, and if you desaturate by 10%, it is **16027294**.

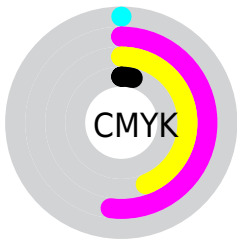
Distribution



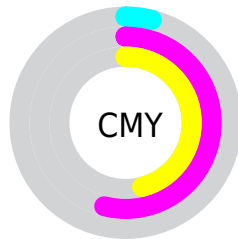
- Red (96%)
- Green (46%)
- Blue (54%)



- Red (96%)
- Yellow (46%)
- Blue (54%)



- Cyan (0%)
- Magenta (52%)
- Yellow (44%)
- Black (4%)



- Cyan (4%)
- Magenta (54%)
- Yellow (46%)

Brightness & Saturation Gradients

These gradients show how the Decimal color 16021129 changes by changing the brightness by 10 percent. The first figure shows a shift by +10% for each color and the second figure -10%.

Similar to the brightness gradients but the following saturation gradients show a change of the Decimal color 16021129 by changing the saturation by 10% instead.

 16021129

 16021129


16777215

 14048112

 16756158

 12075095

 16763610

 10101568

 16770806

 8192042

 6357014

 4521984

 2686977

 0

 16021129

 16021129

■ 16014964

■ 16027294

■ 16008544

■ 16033714

■ 16002379

■ 16039879

■ 15995958

■ 16046300

■ 15990821

■ 16052465

■ 16056319

Harmonies

Analogous

The Analogous color harmony consists of three colors that are next to each other on the color wheel.



15104440



16021129



15303007

Triad

The Triadic color harmony groups three colors that are evenly spaced from another and form a triangle on the color wheel.



16021129



7318873



43510

Complementary

The Complementary color scheme is a pair of colors which are on the opposite of each other on the color wheel.



16021129



7795937

Split Complementary

Split-complementary colors differ from the complementary color scheme. The scheme consists of three colors, the original color and two neighbors of the complement color.



45789



16021129



570243

Square

The Square scheme is like the rectangle color scheme, but the four colors are evenly spaced on the color wheel.



16021129



10723903



46515



7773175

Rectangle

The Rectangle color scheme consists of four colors that form a rectangle on the color wheel.



16021129



14191946



46515



44528

Sweetspot

The Sweet Spot groups the original color and five complimentary colors.



16021129



16767455



14644980



8415596



0



8421504

Same Dimension

The Same Dimension uses a secret algorithm to generate beautiful new colors.



16021129



16736633



16031862



8023664



12189724



3866633

Inverse Universe

The Inverse Universe completely reimagines the original color for something new.



16021129



16736633



7785204



8023664



12189724



3866633

Previews

White Background



This preview shows how the Decimal color 16021129 looks on a white background.

Color Contrast Check

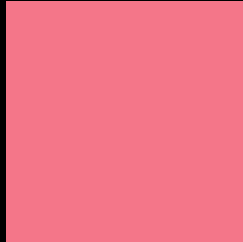
Large Text (above 18pt) WCAG AA × Fail

Any Text WCAG AA × Fail

Large Text (above 18pt) WCAG AAA × Fail

Any Text WCAG AAA × Fail

Black Background



This preview shows how the Decimal color 16021129 looks on a black background.

Color Contrast Check

Large Text (above 18pt) WCAG AA ✓ Pass

Any Text WCAG AA ✓ Pass

Large Text (above 18pt) WCAG AAA ✓ Pass

Any Text WCAG AAA ✓ Pass

If you want to check with other color combinations, try the [Color Contrast Checker](#).

Decimal 16021129 Background



This preview shows how black text looks on a background with the Decimal color 16021129.



This preview shows how white text looks on a background with the Decimal color 16021129.

Color Blindness Simulation

Color vision deficiency is a very complex topic, and I could not describe the different causes any better than Wikipedia does, so if you want to learn more, you should check out their [article about color blindness](#).

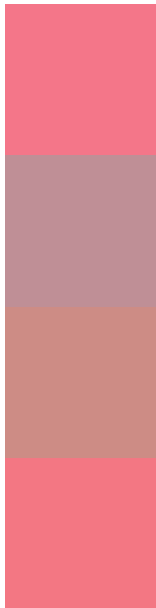
Dichromacy





Tritanopia
15956096

Trichromacy



Original Color
16021129

Protanomaly
12554134

Deuteranomaly
13470853

Tritanomaly
15955843

Monochromacy



Original Color
16021129

Achromatopsia
10395294

Achromatomaly
12423062

CSS Examples

Text

The CSS property to change the color of the text to Decimal 16021129 is called "color". The color property can be set on classes, ids or directly on the HTML element.

This example shows how text in the color #F47689 looks like.

```
.text, #text, p{  
  color:#F47689  
}
```

If you want to add a text shadow in that color use the text-shadow property, you can generate a text shadow directly with our [CSS Text Shadow Generator](#).

Here you see how black text with a 4 pixel #F47689 colored shadow looks like.

```
.shadow{ text-shadow: 4px 4px 2px #F47689
}
```

Border

The CSS property to change the border of an element to Decimal 16021129 is called "border". The border property can be set on classes, ids or directly on the HTML element.

This example shows the color as border, it can be applied via the CSS property "border" or "border-color".

```
.border, #border, table{ border:4px solid
#F47689 }
```

If only the border color should be changed use the property `border-color`.

```
.border{ border-color:#F47689 }
```

If you want to add a box shadow in that color use:

Here you see how a box with a 4 pixel #F47689 colored shadow looks like.

```
.boxshadow{ -moz-box-shadow:4px 4px 4px  
4px #F47689; -webkit-box-shadow:4px 4px  
4px 4px #F47689; box-shadow:4px 4px 4px  
4px #F47689 }
```

Background

The CSS property to change the background color of an element to Decimal 16021129 is called "background". The background property can be set on classes, ids or directly on the HTML element.

```
.background, #background, body{  
background:#F47689 }
```

If only the background color should be changed can be used:

```
.background{ background-color:#F47689 }
```

This example shows the color as background, it is applied via the CSS property "background".

To optimize and compress your CSS code, you can use our [online CSS compressor and optimizer](#) based on csstidy. If you want to create a linear or radial gradient as background or border, check our [CSS Gradient Generator](#).

Hey! You found this booklet interesting? Support Converting Colors with the new Membership Option!

The pro membership hides all ads, plus gives you double the colors in the color bucket, and more awesome pro features!

[Learn more, Memberships starting at \\$2.50/m!](#)

**Follow me
on Twitter!**

@ConvertingColor