

Converting Colors

Decimal(16039864)

Have a look what the booklet for
Decimal(16039864) contains.

Decimal(16039864)	3
<i>Conversions</i>	4
<i>Details</i>	6
<i>Harmonies</i>	11
<i>Previews</i>	23
<i>Color Blindness Simulation</i>	26
<i>CSS Examples</i>	29

Color

Decimal(16039864)

Conversions

Conversions Part 1

Format	Color
Hex	F4BFB8
RGB	244, 191, 184
RGB Percent	96%, 75%, 72%
CMY	0.0431, 0.2510, 0.2784
CMYK	0.00, 0.22, 0.25, 0.04
HSL	7°, 73%, 84%
HSV	7°, 25%, 96%
XYZ	64.5908, 59.9554, 53.5156
YIQ	206.0490, 33.8350, 9.0590

Conversions

Conversions Part 2

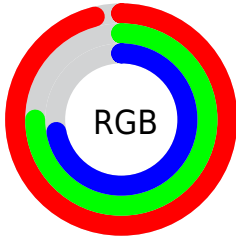
Format	Color
R _Y B	244, 192, 184
Decimal	16039864
CIE Lab	81.81, 17.98, 10.81
CIE LCh	82, 20.977, 31.018
Yxy	59.9554, 0.3627, 0.3367
Android (android.graphics.Color)	4294229944 (0xFFF4BFB8)
YUV	206.0490, -10.8702, 33.2830
Hunter-Lab	77.4309, 13.3959, 13.2239

Details

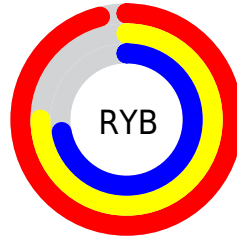
The Decimal color **16039864** is a light color, and the websafe version is hex **FFCCCC**. A complement of this color would be **12119540**, and the grayscale version is **13553358**.

A 20% lighter version of the original color is **16775408**, and **12290435** is the 20% darker color. If you saturate the color by 10%, you get **16034208**, and if you desaturate by 10%, it is **16045520**.

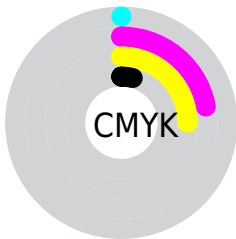
Distribution



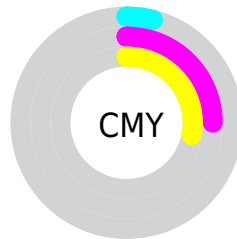
- Red (96%)
- Green (75%)
- Blue (72%)



- Red (96%)
- Yellow (75%)
- Blue (72%)



- Cyan (0%)
- Magenta (22%)
- Yellow (25%)
- Black (4%)



- Cyan (4%)
- Magenta (25%)
- Yellow (28%)

Brightness & Saturation Gradients

These gradients show how the Decimal color 16039864 changes by changing the brightness by 10 percent. The first figure shows a shift by +10% for each color and the second figure -10%.

Similar to the brightness gradients but the following saturation gradients show a change of the Decimal color 16039864 by changing the saturation by 10% instead.

 16039864

 16039864

16777215

 14132381

 16775408

 12290435

 10449002

 8673106

 6963259

 5318949

 3675152

 2359296

 0

 16039864

 16039864

 16034208

 16045520

 16028807

 16050921

 16023151

 16056319

 16017750

 16012094

 16006694

 16001037

 15997952

Harmonies

Analogous

The Analogous color harmony consists of three colors that are next to each other on the color wheel.



15908555



16039864



15451306

Triad

The Triadic color harmony groups three colors that are evenly spaced from another and form a triangle on the color wheel.



16039864



11457976



11980274

Complementary

The Complementary color scheme is a pair of colors which are on the opposite of each other on the color wheel.



16039864



12119540

Split Complementary

Split-complementary colors differ from the complementary color scheme. The scheme consists of three colors, the original color and two neighbors of the complement color.



10540013



16039864



10344395

Square

The Square scheme is like the rectangle color scheme, but the four colors are evenly spaced on the color wheel.



16039864



12898473



9885407



13682413

Rectangle

The Rectangle color scheme consists of four colors that form a rectangle on the color wheel.



16039864



14731429



9885407



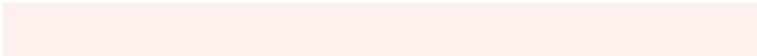
11456498

Sweetspot

The Sweet Spot groups the original color and five complimentary colors.



16039864



16773101



16038125



8418933



0



8421504

Same Dimension

The Same Dimension uses a secret algorithm to generate beautiful new colors.



16039864



16759731



16047544



8024174



12195328



3868416

Inverse Universe

The Inverse Universe completely reimagines the original color for something new.



12119540



11794175



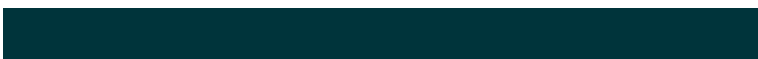
12111860



7240058



42170



13371

Previews

White Background



This preview shows how the Decimal color 16039864 looks on a white background.

Color Contrast Check

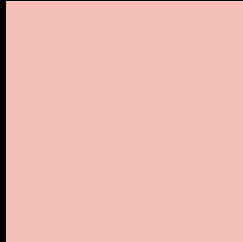
Large Text (above 18pt) WCAG AA × Fail

Any Text WCAG AA × Fail

Large Text (above 18pt) WCAG AAA × Fail

Any Text WCAG AAA × Fail

Black Background



This preview shows how the Decimal color 16039864 looks on a black background.

Color Contrast Check

Large Text (above 18pt) WCAG AA ✓ Pass

Any Text WCAG AA ✓ Pass

Large Text (above 18pt) WCAG AAA ✓ Pass

Any Text WCAG AAA ✓ Pass

If you want to check with other color combinations, try the [Color Contrast Checker](#).

Decimal 16039864 Background



This preview shows how black text looks on a background with the Decimal color 16039864.

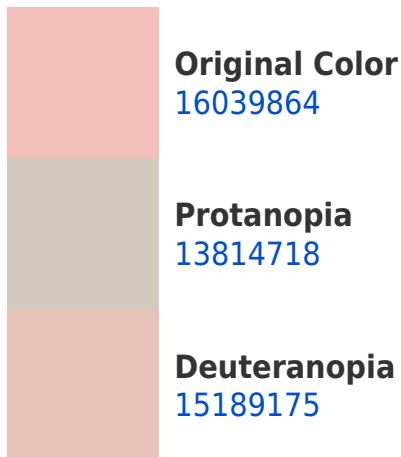



This preview shows how white text looks on a background with the Decimal color 16039864.

Color Blindness Simulation

Color vision deficiency is a very complex topic, and I could not describe the different causes any better than Wikipedia does, so if you want to learn more, you should check out their [article about color blindness](#).

Dichromacy





Tritanopia
16170187

Trichromacy



Original Color
16039864

Protanomaly
14600124

Deuteranomaly
15516343

Tritanomaly
16104900

Monochromacy



Original Color
16039864

Achromatopsia
13553358

Achromatomaly
14469574

CSS Examples

Text

The CSS property to change the color of the text to Decimal 16039864 is called "color". The color property can be set on classes, ids or directly on the HTML element.

This example shows how text in the color #F4BFB8 looks like.

```
.text, #text, p{  
    color:#F4BFB8  
}
```

If you want to add a text shadow in that color use the text-shadow property, you can generate a text shadow directly with our [CSS Text Shadow Generator](#).

Here you see how black text with a 4 pixel #F4BFB8 colored shadow looks like.

```
.shadow{ text-shadow: 4px 4px 2px #F4BFB8
}
```

Border

The CSS property to change the border of an element to Decimal 16039864 is called "border". The border property can be set on classes, ids or directly on the HTML element.

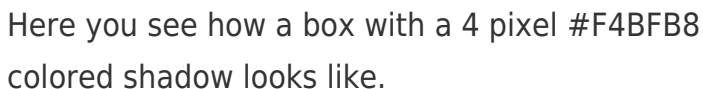
This example shows the color as border, it can be applied via the CSS property "border" or "border-color".

```
.border, #border, table{ border:4px solid
#F4BFB8 }
```

If only the border color should be changed use the property `border-color`.

```
.border{ border-color:#F4BFB8 }
```

If you want to add a box shadow in that color use:



Here you see how a box with a 4 pixel #F4BFB8 colored shadow looks like.

```
.boxshadow{ -moz-box-shadow:4px 4px 4px  
4px #F4BFB8; -webkit-box-shadow:4px 4px  
4px 4px #F4BFB8; box-shadow:4px 4px 4px  
4px #F4BFB8 }
```

Background

The CSS property to change the background color of an element to Decimal 16039864 is called "background". The background property can be set on classes, ids or directly on the HTML element.

```
.background, #background, body{  
background:#F4BFB8 }
```

If only the background color should be changed can be used:

```
.background{ background-color:#F4BFB8 }
```

This example shows the color as background, it is applied via the CSS property "background".

To optimize and compress your CSS code, you can use our [online CSS compressor and optimizer](#) based on csstidy. If you want to create a linear or radial gradient as background or border, check our [CSS Gradient Generator](#).

Hey! You found this booklet interesting? Support Converting Colors with the new Membership Option!

The pro membership hides all ads, plus gives you double the colors in the color bucket, and more awesome pro features!

[Learn more, Memberships starting at \\$2.50/m!](#)

**Follow me
on Twitter!**

@ConvertingColor