

# Converting Colors

Decimal(16069480)

Have a look what the booklet for  
Decimal(16069480) contains.

<b>Decimal(16069480)</b> .....	3
<i><b>Conversions</b></i> .....	4
<i><b>Details</b></i> .....	6
<i><b>Harmonies</b></i> .....	11
<i><b>Previews</b></i> .....	23
<i><b>Color Blindness Simulation</b></i> .....	26
<i><b>CSS Examples</b></i> .....	29

# Color

**Decimal(16069480)**

# Conversions

## Conversions Part 1

<b>Format</b>	<b>Color</b>
Hex	F53368
RGB	245, 51, 104
RGB Percent	96%, 20%, 41%
CMY	0.0392, 0.8000, 0.5922
CMYK	0.00, 0.79, 0.58, 0.04
HSL	344°, 91%, 58%
HSV	344°, 79%, 96%
XYZ	41.3387, 22.7796, 15.3148
YIQ	115.0480, 98.6110, 57.6110

# Conversions

## Conversions Part 2

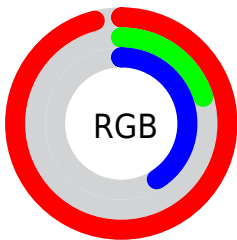
<b>Format</b>	<b>Color</b>
<b>R<sub>YB</sub></b>	245, 51, 104
Decimal	16069480
CIE <sub>Lab</sub>	54.84, 73.46, 18.13
CIE <sub>LCh</sub>	55, 75.669, 13.866
Yxy	22.7796, 0.5204, 0.2868
Android (android.graphics.Color)	4294259560 (0xFFFF53368)
YUV	115.0480, -5.4467, 113.9679
Hunter-Lab	47.7280, 71.0805, 14.3848

# Details

The Decimal color **16069480** is a dark color, and the websafe version is hex **FF3366**. The color can be described as middle washed rose. A complement of this color would be **3405248**, and the grayscale version is **7566195**.

A 20% lighter version of the original color is **16741531**, and **11927610** is the 20% darker color. If you saturate the color by 10%, you get **16063062**, and if you desaturate by 10%, it is **16075898**.

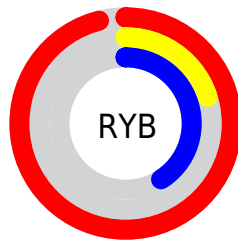
# Distribution



Red (96%)

Green (20%)

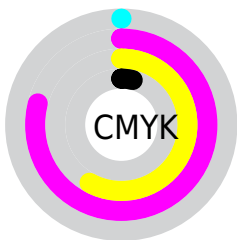
Blue (41%)



Red (96%)

Yellow (20%)

Blue (41%)

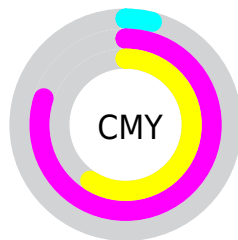


Cyan (0%)

Magenta (79%)

Yellow (58%)

Black (4%)



Cyan (4%)

Magenta (80%)

Yellow (59%)

# Brightness & Saturation Gradients

These gradients show how the Decimal color 16069480 changes by changing the brightness by 10 percent. The first figure shows a shift by +10% for each color and the second figure -10%.

Similar to the brightness gradients but the following saturation gradients show a change of the Decimal color 16069480 by changing the saturation by 10% instead.



 16069480

 16069480

16777215

 13959248

 16741531

 11927610

 16749237

 9830437


 16756945

 7798801

 16764397

 5832706

 16772095

 3801090

 1245184

 0

 16069480

 16069480

 16063062

 16075898

 16056900

 16082060

 16056387

 16088477

 16094639

 16101057

 16107219

 16113637

 16119798

 16121855

# Harmonies

## Analogous

The Analogous color harmony consists of three colors that are next to each other on the color wheel.



15023273



16069480



14963497

# Triad

The Triadic color harmony groups three colors that are evenly spaced from another and form a triangle on the color wheel.



16069480



3053327



38399

# Complementary

The Complementary color scheme is a pair of colors which are on the opposite of each other on the color wheel.



16069480



3405248

# Split Complementary

Split-complementary colors differ from the complementary color scheme. The scheme consists of three colors, the original color and two neighbors of the complement color.



40669



16069480



40540

# Square

The Square scheme is like the rectangle color scheme, but the four colors are evenly spaced on the color wheel.



16069480



8620544



41121



33279

# Rectangle

The Rectangle color scheme consists of four colors that form a rectangle on the color wheel.



16069480



13330688



41121



39417



# Sweetspot

The Sweet Spot groups the original color and five complimentary colors.



16069480



16761555



12465141



8412005



0



8421504



# Same Dimension

The Same Dimension uses a secret algorithm to generate beautiful new colors.



16069480



16715087



16080179



8023666



12189747



3866640



# Inverse Universe

The Inverse Universe completely reimagines the original color for something new.



16069480



16715087



3394549



8023666



12189747



3866640



# Previews

## White Background



This preview shows how the Decimal color 16069480 looks on a white background.

## Color Contrast Check

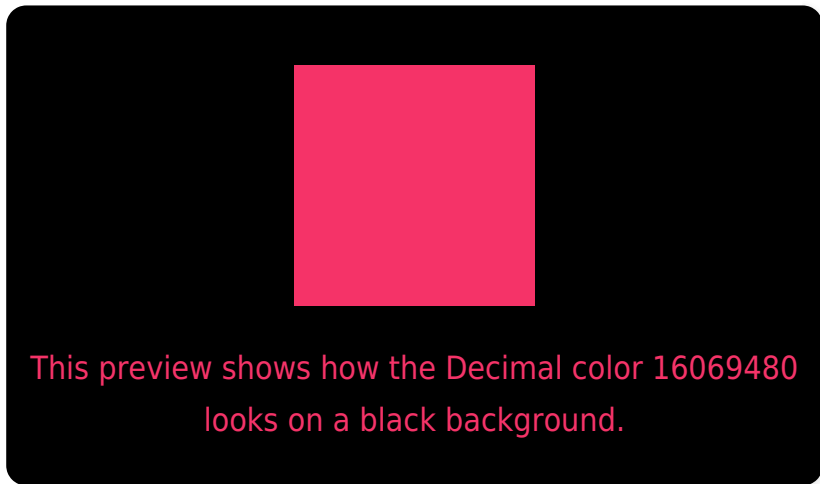
Large Text (above 18pt) WCAG AA ✓ Pass

Any Text WCAG AA ✗ Fail

Large Text (above 18pt) WCAG AAA ✗ Fail

Any Text WCAG AAA ✗ Fail

# Black Background



## Color Contrast Check

Large Text (above 18pt) WCAG AA ✓ Pass

Any Text WCAG AA ✓ Pass

Large Text (above 18pt) WCAG AAA ✓ Pass

Any Text WCAG AAA × Fail

If you want to check with other color combinations, try the [Color Contrast Checker](#).



## Decimal 16069480 Background



This preview shows how black text looks on a background with the Decimal color 16069480.

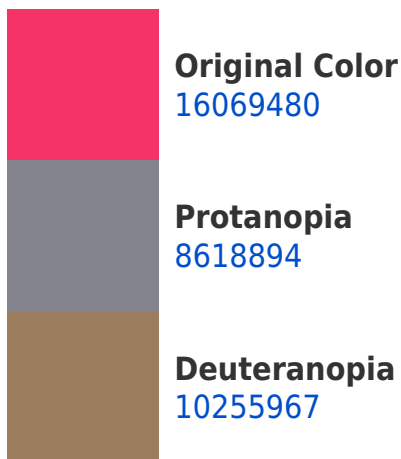


This preview shows how white text looks on a background with the Decimal color 16069480.

# Color Blindness Simulation

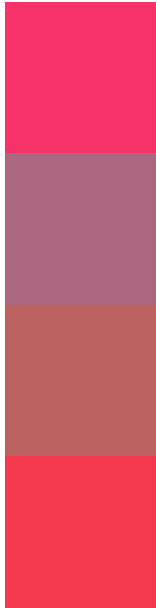
Color vision deficiency is a very complex topic, and I could not describe the different causes any better than Wikipedia does, so if you want to learn more, you should check out their [article about color blindness](#).

## Dichromacy





# Trichromacy



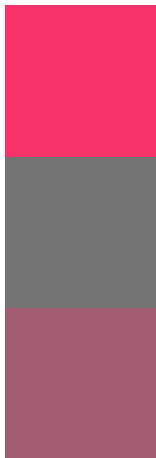
**Original Color**  
16069480

**Protanomaly**  
11298432

**Deuteranomaly**  
12346210

**Tritanomaly**  
16005454

# Monochromacy



**Original Color**  
16069480

**Achromatopsia**  
7566195

**Achromatomaly**  
10640495

# CSS Examples

## Text

The CSS property to change the color of the text to Decimal 16069480 is called "color". The color property can be set on classes, ids or directly on the HTML element.

This example shows how text in the color #F53368 looks like.

```
.text, #text, p{  
    color:#F53368  
}
```

If you want to add a text shadow in that color use the text-shadow property, you can generate a text shadow directly with our [CSS Text Shadow Generator](#).

Here you see how black text with a 4 pixel #F53368 colored shadow looks like.

```
.shadow{ text-shadow: 4px 4px 2px #F53368
}
```

## Border

The CSS property to change the border of an element to Decimal 16069480 is called "border". The border property can be set on classes, ids or directly on the HTML element.

This example shows the color as border, it can be applied via the CSS property "border" or "border-color".

```
.border, #border, table{ border:4px solid
#F53368 }
```

If only the border color should be changed use the property `border-color`.

```
.border{ border-color:#F53368 }
```

If you want to add a box shadow in that color use:

Here you see how a box with a 4 pixel #F53368 colored shadow looks like.

```
.boxshadow{ -moz-box-shadow:4px 4px 4px  
4px #F53368; -webkit-box-shadow:4px 4px  
4px 4px #F53368; box-shadow:4px 4px 4px  
4px #F53368 }
```

# Background

The CSS property to change the background color of an element to Decimal 16069480 is called "background". The background property can be set on classes, ids or directly on the HTML element.

```
.background, #background, body{  
background:#F53368 }
```

If only the background color should be changed can be used:

```
.background{ background-color:#F53368 }
```

This example shows the color as background, it is applied via the CSS property "background".

To optimize and compress your CSS code, you can use our [online CSS compressor and optimizer](#) based on csstidy. If you want to create a linear or radial gradient as background or border, check our [CSS Gradient Generator](#).



Hey! You found this booklet interesting? Support Converting Colors with the new Membership Option!

The pro membership hides all ads, plus gives you double the colors in the color bucket, and more awesome pro features!

**[Learn more, Memberships starting at \\$2.50/m!](#)**

**Follow me  
on Twitter!**

@ConvertingColor