

# Converting Colors

Decimal(16070776)

Have a look what the booklet for  
Decimal(16070776) contains.

<b>Decimal(16070776)</b> .....	3
<i><b>Conversions</b></i> .....	4
<i><b>Details</b></i> .....	6
<i><b>Harmonies</b></i> .....	11
<i><b>Previews</b></i> .....	23
<i><b>Color Blindness Simulation</b></i> .....	26
<i><b>CSS Examples</b></i> .....	29

# Color

**Decimal(16070776)**

# Conversions

## Conversions Part 1

<b>Format</b>	<b>Color</b>
Hex	F53878
RGB	245, 56, 120
RGB Percent	96%, 22%, 47%
CMY	0.0392, 0.7804, 0.5294
CMYK	0.00, 0.77, 0.51, 0.04
HSL	340°, 90%, 59%
HSV	340°, 77%, 96%
XYZ	42.4605, 23.5969, 20.0860
YIQ	119.8070, 92.1000, 59.9720

# Conversions

## Conversions Part 2

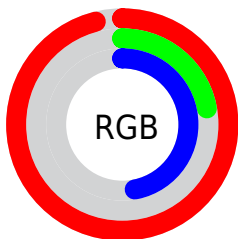
<b>Format</b>	<b>Color</b>
<b>R<sub>YB</sub></b>	245, 56, 120
Decimal	16070776
CIE <sub>Lab</sub>	55.68, 73.25, 9.74
CIE <sub>LCh</sub>	56, 73.896, 7.572
Yxy	23.5969, 0.4929, 0.2739
Android (android.graphics.Color)	4294260856 (0xFFFF53878)
YUV	119.8070, 0.0951, 109.7943
Hunter-Lab	48.5766, 71.0166, 9.4877

# Details

The Decimal color **16070776** is a dark color, and the websafe version is hex **FF3366**. The color can be described as middle washed rose. A complement of this color would be **3732917**, and the grayscale version is **7895160**.

A 20% lighter version of the original color is **16742572**, and **11927624** is the 20% darker color. If you saturate the color by 10%, you get **16064360**, and if you desaturate by 10%, it is **16076936**.

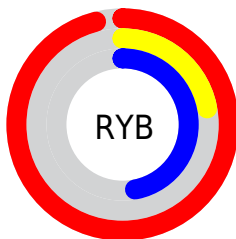
# Distribution



Red (96%)

Green (22%)

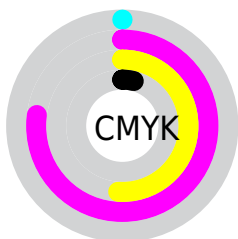
Blue (47%)



Red (96%)

Yellow (22%)

Blue (47%)

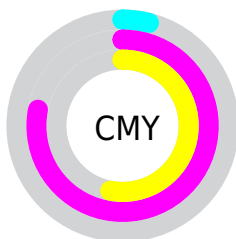


Cyan (0%)

Magenta (77%)

Yellow (51%)

Black (4%)



Cyan (4%)

Magenta (78%)

Yellow (53%)

# Brightness & Saturation Gradients

These gradients show how the Decimal color 16070776 changes by changing the brightness by 10 percent. The first figure shows a shift by +10% for each color and the second figure -10%.

Similar to the brightness gradients but the following saturation gradients show a change of the Decimal color 16070776 by changing the saturation by 10% instead.



 16070776

 16070776

16777215

 13959263

 16742572

 11927624

 16750279

 9895986

 16757731

 7929886

 16765439

 5963778

 16773119

 3997699

 1572865

 0

 16070776

 16070776

 16064360

 16076936

 16058200

 16083352

 16056403

 16089769

 16095929

 16102089

 16108505

 16114665

 16121082

 16121855

# Harmonies

## Analogous

The Analogous color harmony consists of three colors that are next to each other on the color wheel.



14502328



16070776



15421498

# Triad

The Triadic color harmony groups three colors that are evenly spaced from another and form a triangle on the color wheel.



16070776



5019392



39420

# Complementary

The Complementary color scheme is a pair of colors which are on the opposite of each other on the color wheel.



16070776



3732917

# Split Complementary

Split-complementary colors differ from the complementary color scheme. The scheme consists of three colors, the original color and two neighbors of the complement color.



41427



16070776



40785

# Square

The Square scheme is like the rectangle color scheme, but the four colors are evenly spaced on the color wheel.



16070776



9603072



41621



35071

# Rectangle

The Rectangle color scheme consists of four colors that form a rectangle on the color wheel.



16070776



13985289



41621



40434



# Sweetspot

The Sweet Spot groups the original color and five complimentary colors.



16070776



16762072



11745525



8412264



0



8421504



# Same Dimension

The Same Dimension uses a secret algorithm to generate beautiful new colors.



16070776



16716386



16077880



8023666



12189759



3866644



# Inverse Universe

The Inverse Universe completely reimagines the original color for something new.



16070776



16716386



3725813



8023666



12189759



3866644



# Previews

## White Background



This preview shows how the Decimal color 16070776 looks on a white background.

## Color Contrast Check

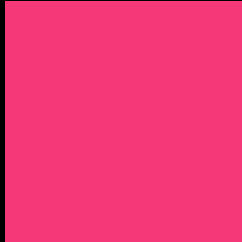
Large Text (above 18pt) WCAG AA ✓ Pass

Any Text WCAG AA ✗ Fail

Large Text (above 18pt) WCAG AAA ✗ Fail

Any Text WCAG AAA ✗ Fail

# Black Background



This preview shows how the Decimal color 16070776 looks on a black background.

## Color Contrast Check

Large Text (above 18pt) WCAG AA ✓ Pass

Any Text WCAG AA ✓ Pass

Large Text (above 18pt) WCAG AAA ✓ Pass

Any Text WCAG AAA × Fail

If you want to check with other color combinations, try the [Color Contrast Checker](#).



## Decimal 16070776 Background



This preview shows how black text looks on a background with the Decimal color 16070776.




This preview shows how white text looks on a background with the Decimal color 16070776.

# Color Blindness Simulation

Color vision deficiency is a very complex topic, and I could not describe the different causes any better than Wikipedia does, so if you want to learn more, you should check out their [article about color blindness](#).

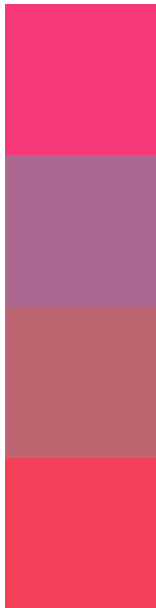
## Dichromacy





**Tritanopia**  
15877191

# Trichromacy



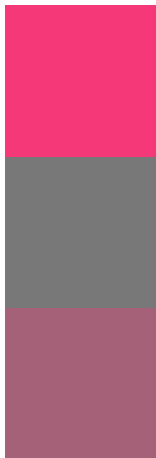
**Original Color**  
16070776

**Protanomaly**  
11233682

**Deuteranomaly**  
12346994

**Tritanomaly**  
15941721

# Monochromacy



**Original Color**  
16070776

**Achromatopsia**  
7895160

**Achromatomaly**  
10838392

# CSS Examples

## Text

The CSS property to change the color of the text to Decimal 16070776 is called "color". The color property can be set on classes, ids or directly on the HTML element.

This example shows how text in the color #F53878 looks like.

```
.text, #text, p{  
  color:#F53878  
}
```

If you want to add a text shadow in that color use the text-shadow property, you can generate a text shadow directly with our [CSS Text Shadow Generator](#).

Here you see how black text with a 4 pixel #F53878 colored shadow looks like.

```
.shadow{ text-shadow: 4px 4px 2px #F53878
}
```

## Border

The CSS property to change the border of an element to Decimal 16070776 is called "border". The border property can be set on classes, ids or directly on the HTML element.

This example shows the color as border, it can be applied via the CSS property "border" or "border-color".

```
.border, #border, table{ border:4px solid
#F53878 }
```

If only the border color should be changed use the property `border-color`.

```
.border{ border-color:#F53878 }
```

If you want to add a box shadow in that color use:

Here you see how a box with a 4 pixel #F53878 colored shadow looks like.

```
.boxshadow{ -moz-box-shadow:4px 4px 4px  
4px #F53878; -webkit-box-shadow:4px 4px  
4px 4px #F53878; box-shadow:4px 4px 4px  
4px #F53878 }
```

# Background

The CSS property to change the background color of an element to Decimal 16070776 is called "background". The background property can be set on classes, ids or directly on the HTML element.

```
.background, #background, body{  
background:#F53878 }
```

If only the background color should be changed can be used:

```
.background{ background-color:#F53878 }
```

This example shows the color as background, it is applied via the CSS property "background".

To optimize and compress your CSS code, you can use our [online CSS compressor and optimizer](#) based on csstidy. If you want to create a linear or radial gradient as background or border, check our [CSS Gradient Generator](#).



Hey! You found this booklet interesting? Support Converting Colors with the new Membership Option!

The pro membership hides all ads, plus gives you double the colors in the color bucket, and more awesome pro features!

**[Learn more, Memberships starting at \\$2.50/m!](#)**

**Follow me  
on Twitter!**

**@ConvertingColor**