

Converting Colors

Decimal(16072061)

Have a look what the booklet for
Decimal(16072061) contains.

Decimal(16072061)	3
<i>Conversions</i>	4
<i>Details</i>	6
<i>Harmonies</i>	11
<i>Previews</i>	23
<i>Color Blindness Simulation</i>	26
<i>CSS Examples</i>	29

Color

Decimal(16072061)

Conversions

Conversions Part 1

Format	Color
Hex	F53D7D
RGB	245, 61, 125
RGB Percent	96%, 24%, 49%
CMY	0.0392, 0.7608, 0.5098
CMYK	0.00, 0.75, 0.49, 0.04
HSL	339°, 90%, 60%
HSV	339°, 75%, 96%
XYZ	43.0266, 24.2306, 21.8113
YIQ	123.3120, 89.1200, 58.9120

Conversions

Conversions Part 2

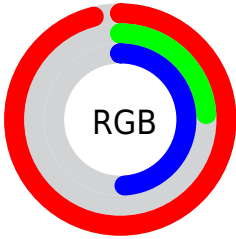
Format	Color
R_{YB}	245, 61, 125
Decimal	16072061
CIE _{Lab}	56.32, 72.20, 7.66
CIE _{LCh}	56, 72.606, 6.059
Yxy	24.2306, 0.4831, 0.2720
Android (android.graphics.Color)	4294262141 (0xFFFF53D7D)
YUV	123.3120, 0.8322, 106.7204
Hunter-Lab	49.2246, 69.8815, 8.1860

Details

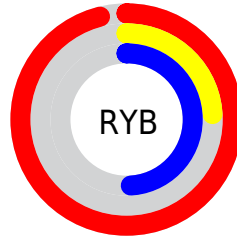
The Decimal color **16072061** is a dark color, and the websafe version is hex **CC0066**. The color can be described as middle washed rose. A complement of this color would be **4060597**, and the grayscale version is **8092539**.

A 20% lighter version of the original color is **16743345**, and **11993165** is the 20% darker color. If you saturate the color by 10%, you get **16065645**, and if you desaturate by 10%, it is **16078477**.

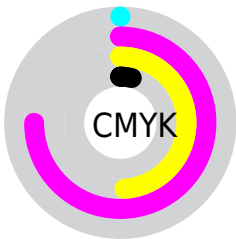
Distribution



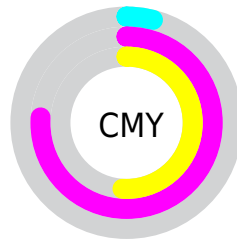
- Red (96%)
- Green (24%)
- Blue (49%)



- Red (96%)
- Yellow (24%)
- Blue (49%)



- Cyan (0%)
- Magenta (75%)
- Yellow (49%)
- Black (4%)



- Cyan (4%)
- Magenta (76%)
- Yellow (51%)

Brightness & Saturation Gradients

These gradients show how the Decimal color 16072061 changes by changing the brightness by 10 percent. The first figure shows a shift by +10% for each color and the second figure -10%.

Similar to the brightness gradients but the following saturation gradients show a change of the Decimal color 16072061 by changing the saturation by 10% instead.

 16072061

 16072061

16777215

 14028644

 16743345

 11993165

 16751053

 9961526

 16758505

 7929889

 16766207

 5963786

 16773887

 4063235

 1703937

 0

 16072061

 16072061

■ 16065645

■ 16078477

■ 16059485

■ 16084637

■ 16056405

■ 16090797

■ 16097213

■ 16103373

■ 16109789

■ 16116205

■ 16121853

■ 16121855

Harmonies

Analogous

The Analogous color harmony consists of three colors that are next to each other on the color wheel.



14372540



16072061



15487296

Triad

The Triadic color harmony groups three colors that are evenly spaced from another and form a triangle on the color wheel.



16072061



5478401



39931

Complementary

The Complementary color scheme is a pair of colors which are on the opposite of each other on the color wheel.



16072061



4060597

Split Complementary

Split-complementary colors differ from the complementary color scheme. The scheme consists of three colors, the original color and two neighbors of the complement color.



41680



16072061



41040

Square

The Square scheme is like the rectangle color scheme, but the four colors are evenly spaced on the color wheel.



16072061



9931008



41875



35839

Rectangle

The Rectangle color scheme consists of four colors that form a rectangle on the color wheel.



16072061



14181909



41875



40688

Sweetspot

The Sweet Spot groups the original color and five complimentary colors.



16072061



16762073



11877877



8412264



0



8421504

Same Dimension

The Same Dimension uses a secret algorithm to generate beautiful new colors.



16072061



16718185



16079165



8023666



12189761



3866644

Inverse Universe

The Inverse Universe completely reimagines the original color for something new.



16072061



16718185



4053493



8023666



12189761



3866644

Previews

White Background



This preview shows how the Decimal color 16072061 looks on a white background.

Color Contrast Check

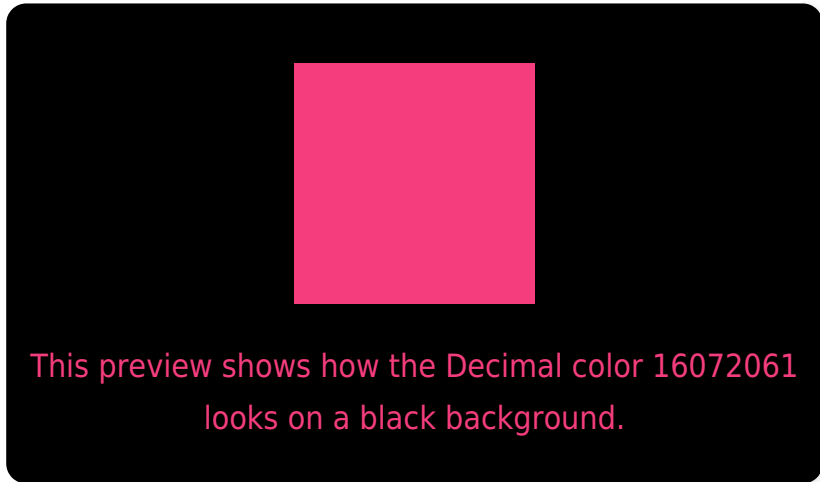
Large Text (above 18pt) WCAG AA ✓ Pass

Any Text WCAG AA × Fail

Large Text (above 18pt) WCAG AAA × Fail

Any Text WCAG AAA × Fail

Black Background



Color Contrast Check

Large Text (above 18pt) WCAG AA ✓ Pass

Any Text WCAG AA ✓ Pass

Large Text (above 18pt) WCAG AAA ✓ Pass

Any Text WCAG AAA × Fail

If you want to check with other color combinations, try the [Color Contrast Checker](#).

Decimal 16072061 Background



This preview shows how black text looks on a background with the Decimal color 16072061.



This preview shows how white text looks on a background with the Decimal color 16072061.

Color Blindness Simulation

Color vision deficiency is a very complex topic, and I could not describe the different causes any better than Wikipedia does, so if you want to learn more, you should check out their [article about color blindness](#).

Dichromacy



Original Color
16072061

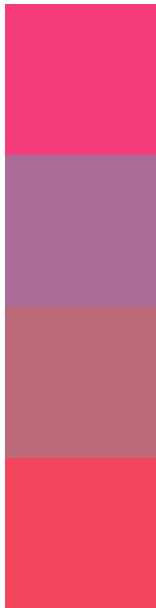
Protanopia
8423078

Deuteranopia
10191476



Tritanopia
15878476

Trichromacy



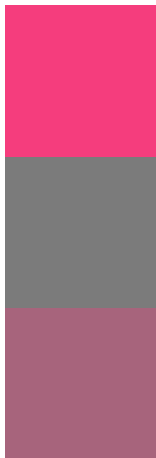
Original Color
16072061

Protanomaly
11234199

Deuteranomaly
12347767

Tritanomaly
15943006

Monochromacy



Original Color
16072061

Achromatopsia
8092539

Achromatomaly
10970236

CSS Examples

Text

The CSS property to change the color of the text to Decimal 16072061 is called "color". The color property can be set on classes, ids or directly on the HTML element.

This example shows how text in the color #F53D7D looks like.

```
.text, #text, p{  
  color:#F53D7D  
}
```

If you want to add a text shadow in that color use the text-shadow property, you can generate a text shadow directly with our [CSS Text Shadow Generator](#).

Here you see how black text with a 4 pixel #F53D7D colored shadow looks like.

```
.shadow{ text-shadow: 4px 4px 2px #F53D7D
}
```

Border

The CSS property to change the border of an element to Decimal 16072061 is called "border". The border property can be set on classes, ids or directly on the HTML element.

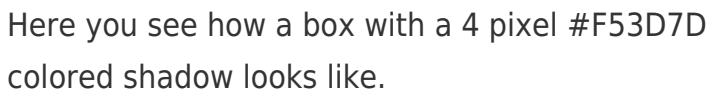
This example shows the color as border, it can be applied via the CSS property "border" or "border-color".

```
.border, #border, table{ border:4px solid
#F53D7D }
```

If only the border color should be changed use the property `border-color`.

```
.border{ border-color:#F53D7D }
```

If you want to add a box shadow in that color use:



Here you see how a box with a 4 pixel #F53D7D colored shadow looks like.

```
.boxshadow{ -moz-box-shadow:4px 4px 4px  
4px #F53D7D; -webkit-box-shadow:4px 4px  
4px 4px #F53D7D; box-shadow:4px 4px 4px  
4px #F53D7D }
```

Background

The CSS property to change the background color of an element to Decimal 16072061 is called "background". The background property can be set on classes, ids or directly on the HTML element.

```
.background, #background, body{  
background:#F53D7D }
```

If only the background color should be changed can be used:

```
.background{ background-color:#F53D7D }
```

This example shows the color as background, it is applied via the CSS property "background".

To optimize and compress your CSS code, you can use our [online CSS compressor and optimizer](#) based on csstidy. If you want to create a linear or radial gradient as background or border, check our [CSS Gradient Generator](#).

Hey! You found this booklet interesting? Support Converting Colors with the new Membership Option!

The pro membership hides all ads, plus gives you double the colors in the color bucket, and more awesome pro features!

[Learn more, Memberships starting at \\$2.50/m!](#)

**Follow me
on Twitter!**

@ConvertingColor