

Converting Colors

Decimal(16075389)

Have a look what the booklet for
Decimal(16075389) contains.

Decimal(16075389)	3
<i>Conversions</i>	4
<i>Details</i>	6
<i>Harmonies</i>	11
<i>Previews</i>	23
<i>Color Blindness Simulation</i>	26
<i>CSS Examples</i>	29

Color

Decimal(16075389)

Conversions

Conversions Part 1

Format	Color
Hex	F54A7D
RGB	245, 74, 125
RGB Percent	96%, 29%, 49%
CMY	0.0392, 0.7098, 0.5098
CMYK	0.00, 0.70, 0.49, 0.04
HSL	342°, 90%, 63%
HSV	342°, 70%, 96%
XYZ	43.8066, 25.7907, 22.0713
YIQ	130.9430, 85.5450, 52.1130

Conversions

Conversions Part 2

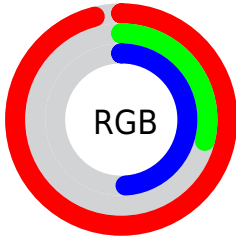
Format	Color
R_{YB}	245, 74, 125
Decimal	16075389
CIE Lab	57.84, 67.96, 9.82
CIE LCh	58, 68.662, 8.223
Yxy	25.7907, 0.4779, 0.2813
Android (android.graphics.Color)	4294265469 (0xFFFF54A7D)
YUV	130.9430, -2.9299, 100.0280
Hunter-Lab	50.7845, 65.1007, 9.7814

Details

The Decimal color **16075389** is a dark color, and the websafe version is hex **FF6699**. The color can be described as middle washed rose. A complement of this color would be **4912578**, and the grayscale version is **8618883**.

A 20% lighter version of the original color is **16745905**, and **11993165** is the 20% darker color. If you saturate the color by 10%, you get **16068972**, and if you desaturate by 10%, it is **16081550**.

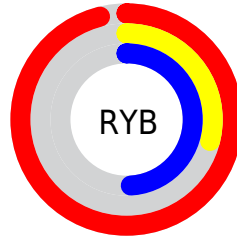
Distribution



Red (96%)

Green (29%)

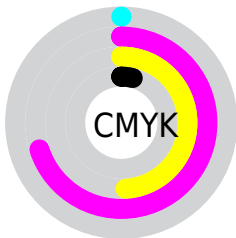
Blue (49%)



Red (96%)

Yellow (29%)

Blue (49%)

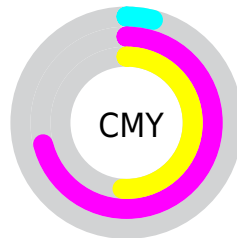


Cyan (0%)

Magenta (70%)

Yellow (49%)

Black (4%)



Cyan (4%)

Magenta (71%)

Yellow (51%)

Brightness & Saturation Gradients

These gradients show how the Decimal color 16075389 changes by changing the brightness by 10 percent. The first figure shows a shift by +10% for each color and the second figure -10%.


Similar to the brightness gradients but the following saturation gradients show a change of the Decimal color 16075389 by changing the saturation by 10% instead.


 16075389  16075389

16777215  14034788

 16745905  11993165

 16753357  9961526

 16761065  7995425

 16768511  6029322

 16776191  4194307

 1900545

 0

 16075389  16075389

 16068972

 16081550

 16062811

 16087967

 16056393

 16094129

 16100546

 16106707

 16113124

 16119541

 16121855

Harmonies

Analogous

The Analogous color harmony consists of three colors that are next to each other on the color wheel.



14636729



16075389



15424580

Triad

The Triadic color harmony groups three colors that are evenly spaced from another and form a triangle on the color wheel.



16075389



5676062



40443

Complementary

The Complementary color scheme is a pair of colors which are on the opposite of each other on the color wheel.



16075389



4912578

Split Complementary

Split-complementary colors differ from the complementary color scheme. The scheme consists of three colors, the original color and two neighbors of the complement color.



42452



16075389



41820

Square

The Square scheme is like the rectangle color scheme, but the four colors are evenly spaced on the color wheel.



16075389



9997824



42650



36351

Rectangle

The Rectangle color scheme consists of four colors that form a rectangle on the color wheel.



16075389



14118687



42650



41457

Sweetspot

The Sweet Spot groups the original color and five complimentary colors.



16075389



16763353



12733173



8413289



0



8421504

Same Dimension

The Same Dimension uses a secret algorithm to generate beautiful new colors.



16075389



16722281



16084042



8023666



12189752



3866641

Inverse Universe

The Inverse Universe completely reimagines the original color for something new.



16075389



16722281



4903925



8023666



12189752



3866641

Previews

White Background



This preview shows how the Decimal color 16075389 looks on a white background.

Color Contrast Check

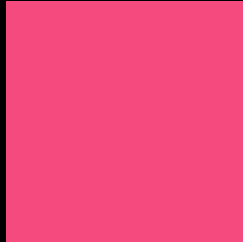
Large Text (above 18pt) WCAG AA ✓ Pass

Any Text WCAG AA × Fail

Large Text (above 18pt) WCAG AAA × Fail

Any Text WCAG AAA × Fail

Black Background



This preview shows how the Decimal color 16075389 looks on a black background.

Color Contrast Check

Large Text (above 18pt) WCAG AA ✓ Pass

Any Text WCAG AA ✓ Pass

Large Text (above 18pt) WCAG AAA ✓ Pass

Any Text WCAG AAA × Fail

If you want to check with other color combinations, try the [Color Contrast Checker](#).

Decimal 16075389 Background



This preview shows how black text looks on a background with the Decimal color 16075389.



This preview shows how white text looks on a background with the Decimal color 16075389.

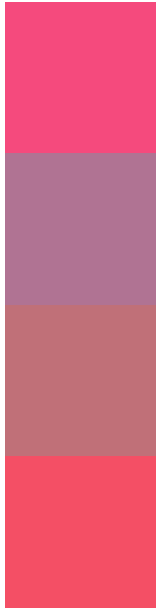
Color Blindness Simulation

Color vision deficiency is a very complex topic, and I could not describe the different causes any better than Wikipedia does, so if you want to learn more, you should check out their [article about color blindness](#).

Dichromacy



Trichromacy



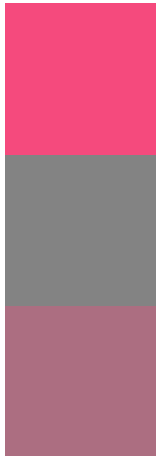
Original Color
16075389

Protanomaly
11563923

Deuteranomaly
12611704

Tritanomaly
16011109

Monochromacy



Original Color
16075389

Achromatopsia
8618883

Achromatomaly
11300481

CSS Examples

Text

The CSS property to change the color of the text to Decimal 16075389 is called "color". The color property can be set on classes, ids or directly on the HTML element.

This example shows how text in the color #F54A7D looks like.

```
.text, #text, p{  
    color:#F54A7D  
}
```

If you want to add a text shadow in that color use the text-shadow property, you can generate a text shadow directly with our [CSS Text Shadow Generator](#).

Here you see how black text with a 4 pixel #F54A7D colored shadow looks like.

```
.shadow{ text-shadow: 4px 4px 2px #F54A7D
}
```

Border

The CSS property to change the border of an element to Decimal 16075389 is called "border". The border property can be set on classes, ids or directly on the HTML element.

This example shows the color as border, it can be applied via the CSS property "border" or "border-color".

```
.border, #border, table{ border:4px solid
#F54A7D }
```

If only the border color should be changed use the property `border-color`.

```
.border{ border-color:#F54A7D }
```

If you want to add a box shadow in that color use:

Here you see how a box with a 4 pixel #F54A7D colored shadow looks like.

```
.boxshadow{ -moz-box-shadow:4px 4px 4px  
4px #F54A7D; -webkit-box-shadow:4px 4px  
4px 4px #F54A7D; box-shadow:4px 4px 4px  
4px #F54A7D }
```

Background

The CSS property to change the background color of an element to Decimal 16075389 is called "background". The background property can be set on classes, ids or directly on the HTML element.

```
.background, #background, body{  
background:#F54A7D }
```

If only the background color should be changed can be used:

```
.background{ background-color:#F54A7D }
```

This example shows the color as background, it is applied via the CSS property "background".

To optimize and compress your CSS code, you can use our [online CSS compressor and optimizer](#) based on csstidy. If you want to create a linear or radial gradient as background or border, check our [CSS Gradient Generator](#).

Hey! You found this booklet interesting? Support Converting Colors with the new Membership Option!

The pro membership hides all ads, plus gives you double the colors in the color bucket, and more awesome pro features!

[Learn more, Memberships starting at \\$2.50/m!](#)

**Follow me
on Twitter!**

@ConvertingColor