

# Converting Colors

Decimal(16083093)

Have a look what the booklet for  
Decimal(16083093) contains.

<b>Decimal(16083093)</b> .....	3
<i><b>Conversions</b></i> .....	4
<i><b>Details</b></i> .....	6
<i><b>Harmonies</b></i> .....	11
<i><b>Previews</b></i> .....	23
<i><b>Color Blindness Simulation</b></i> .....	26
<i><b>CSS Examples</b></i> .....	29

# **Color**

**Decimal(16083093)**

# Conversions

## Conversions Part 1

Format	Color
Hex	F56895
RGB	245, 104, 149
RGB Percent	96%, 41%, 58%
CMY	0.0392, 0.5922, 0.4157
CMYK	0.00, 0.58, 0.39, 0.04
HSL	341°, 88%, 68%
HSV	341°, 58%, 96%
XYZ	48.0313, 31.4830, 31.9791
YIQ	151.2890, 69.5910, 43.8870

# Conversions

## Conversions Part 2

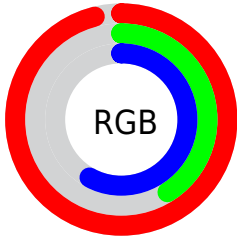
<b>Format</b>	<b>Color</b>
R <sub>Y</sub> B	245, 104, 149
Decimal	16083093
CIE Lab	62.91, 58.12, 3.11
CIE LCh	63, 58.199, 3.068
Yxy	31.4830, 0.4308, 0.2824
Android (android.graphics.Color)	4294273173 (0xFF56895)
YUV	151.2890, -1.1285, 82.1845
Hunter-Lab	56.1097, 54.6083, 5.4852

# Details

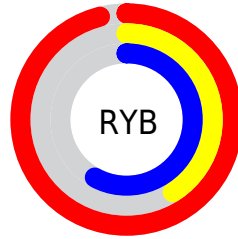
The Decimal color **16083093** is a light color, and the websafe version is hex **FF6699**. A complement of this color would be **6878664**, and the grayscale version is **9934743**.

A 20% lighter version of the original color is **16752843**, and **12136035** is the 20% darker color. If you saturate the color by 10%, you get **16076932**, and if you desaturate by 10%, it is **16089510**.

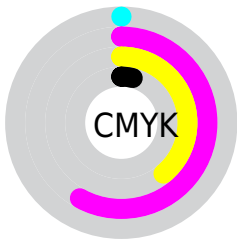
# Distribution



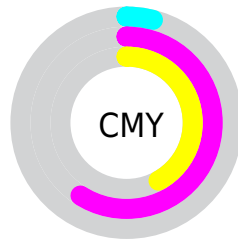
- Red (96%)
- Green (41%)
- Blue (58%)



- Red (96%)
- Yellow (41%)
- Blue (58%)



- Cyan (0%)
- Magenta (58%)
- Yellow (39%)
- Black (4%)



- Cyan (4%)
- Magenta (59%)
- Yellow (42%)

# Brightness & Saturation Gradients

These gradients show how the Decimal color 16083093 changes by changing the brightness by 10 percent. The first figure shows a shift by +10% for each color and the second figure -10%.

Similar to the brightness gradients but the following saturation gradients show a change of the Decimal color 16083093 by changing the saturation by 10% instead.



 16083093

 16083093


16777215

 14109819

 16752843

 12136035

 16760295

 10158411

 16767743

 8257588

 16775167

 6357024

 4587526

 2686977

 0

 16083093

 16083093

 16076932

 16089510

 16070516

 16095670

 16064099

 16102087

 16057938

 16108248

 16056398

 16114664

 16120825

 16121855

# Harmonies

## Analogous

The Analogous color harmony consists of three colors that are next to each other on the color wheel.



14382024



16083093



15888739

# Triad

The Triadic color harmony groups three colors that are evenly spaced from another and form a triangle on the color wheel.



16083093



8037691



43764

# Complementary

The Complementary color scheme is a pair of colors which are on the opposite of each other on the color wheel.



16083093



6878664

# Split Complementary

Split-complementary colors differ from the complementary color scheme. The scheme consists of three colors, the original color and two neighbors of the complement color.



45263



16083093



2338407

# Square

The Square scheme is like the rectangle color scheme, but the four colors are evenly spaced on the color wheel.



16083093



11507495



45468



2268415

# Rectangle

The Rectangle color scheme consists of four colors that form a rectangle on the color wheel.



16083093



14908742



45468



44522



# Sweetspot

The Sweet Spot groups the original color and five complimentary colors.



16083093



16766177



13002997



8414830



0



8421504



# Same Dimension

The Same Dimension uses a secret algorithm to generate beautiful new colors.



16083093



16732039



16089192



8023666



12189755



3866643



# Inverse Universe

The Inverse Universe completely reimagines the original color for something new.



16083093



16732039



6872565



8023666



12189755



3866643



# Previews

## White Background



This preview shows how the Decimal color 16083093 looks on a white background.

## Color Contrast Check

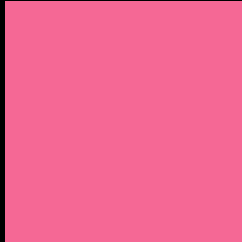
Large Text (above 18pt) WCAG AA × Fail

Any Text WCAG AA × Fail

Large Text (above 18pt) WCAG AAA × Fail

Any Text WCAG AAA × Fail

# Black Background



This preview shows how the Decimal color 16083093 looks on a black background.

## Color Contrast Check

Large Text (above 18pt) WCAG AA ✓ Pass

Any Text WCAG AA ✓ Pass

Large Text (above 18pt) WCAG AAA ✓ Pass

Any Text WCAG AAA ✓ Pass

If you want to check with other color combinations, try the [Color Contrast Checker](#).



## Decimal 16083093 Background



This preview shows how black text looks on a background with the Decimal color 16083093.




This preview shows how white text looks on a background with the Decimal color 16083093.

# Color Blindness Simulation

Color vision deficiency is a very complex topic, and I could not describe the different causes any better than Wikipedia does, so if you want to learn more, you should check out their [article about color blindness](#).

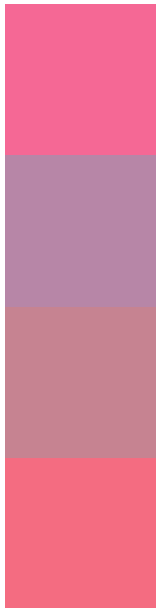
## Dichromacy





**Tritanopia**  
15953526

# Trichromacy



**Original Color**  
16083093

**Protanomaly**  
12027559

**Deuteranomaly**  
13009809

**Tritanomaly**  
16018561

# Monochromacy



**Original Color**  
16083093

**Achromatopsia**  
9934743

**Achromatomaly**  
12158614

# CSS Examples

## Text

The CSS property to change the color of the text to Decimal 16083093 is called "color". The color property can be set on classes, ids or directly on the HTML element.

This example shows how text in the color #F56895 looks like.

```
.text, #text, p{  
  color:#F56895  
}
```

If you want to add a text shadow in that color use the text-shadow property, you can generate a text shadow directly with our [CSS Text Shadow Generator](#).

Here you see how black text with a 4 pixel #F56895 colored shadow looks like.

```
.shadow{ text-shadow: 4px 4px 2px #F56895
}
```

## Border

The CSS property to change the border of an element to Decimal 16083093 is called "border". The border property can be set on classes, ids or directly on the HTML element.

This example shows the color as border, it can be applied via the CSS property "border" or "border-color".

```
.border, #border, table{ border:4px solid
#F56895 }
```

If only the border color should be changed use the property `border-color`.

```
.border{ border-color:#F56895 }
```

If you want to add a box shadow in that color use:

Here you see how a box with a 4 pixel #F56895 colored shadow looks like.

```
.boxshadow{ -moz-box-shadow:4px 4px 4px  
4px #F56895; -webkit-box-shadow:4px 4px  
4px 4px #F56895; box-shadow:4px 4px 4px  
4px #F56895 }
```

# Background

The CSS property to change the background color of an element to Decimal 16083093 is called "background". The background property can be set on classes, ids or directly on the HTML element.

```
.background, #background, body{  
background:#F56895 }
```

If only the background color should be changed can be used:

```
.background{ background-color:#F56895 }
```

This example shows the color as background, it is applied via the CSS property "background".

To optimize and compress your CSS code, you can use our [online CSS compressor and optimizer](#) based on csstidy. If you want to create a linear or radial gradient as background or border, check our [CSS Gradient Generator](#).



Hey! You found this booklet interesting? Support Converting Colors with the new Membership Option!

The pro membership hides all ads, plus gives you double the colors in the color bucket, and more awesome pro features!

**[Learn more, Memberships starting at \\$2.50/m!](#)**

**Follow me  
on Twitter!**

@ConvertingColor