

Converting Colors

Decimal(16084093)

Have a look what the booklet for
Decimal(16084093) contains.

Decimal(16084093)	3
<i>Conversions</i>	4
<i>Details</i>	6
<i>Harmonies</i>	11
<i>Previews</i>	23
<i>Color Blindness Simulation</i>	26
<i>CSS Examples</i>	29

Color

Decimal(16084093)

Conversions

Conversions Part 1

Format	Color
Hex	F56C7D
RGB	245, 108, 125
RGB Percent	96%, 42%, 49%
CMY	0.0392, 0.5765, 0.5098
CMYK	0.00, 0.56, 0.49, 0.04
HSL	353°, 87%, 69%
HSV	353°, 56%, 96%
XYZ	46.7204, 31.6183, 23.0425
YIQ	150.9010, 76.1950, 34.3310

Conversions

Conversions Part 2

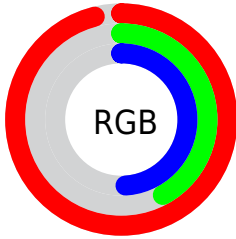
Format	Color
RYB	245, 108, 125
Decimal	16084093
CIELab	63.03, 53.97, 17.07
CIELCh	63, 56.607, 17.548
Yxy	31.6183, 0.4608, 0.3119
Android (android.graphics.Color)	4294274173 (0xFFFF56C7D)
YUV	150.9010, -12.7692, 82.5248
Hunter-Lab	56.2301, 49.9092, 15.0646

Details

The Decimal color **16084093** is a light color, and the websafe version is hex **FF6666**. A complement of this color would be **7140836**, and the grayscale version is **9934743**.

A 20% lighter version of the original color is **16753585**, and **12072012** is the 20% darker color. If you saturate the color by 10%, you get **16077928**, and if you desaturate by 10%, it is **16090258**.

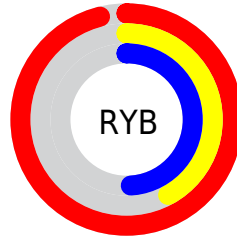
Distribution



Red (96%)

Green (42%)

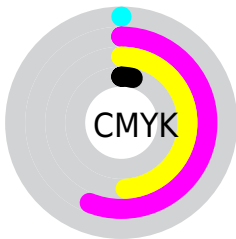
Blue (49%)



Red (96%)

Yellow (42%)

Blue (49%)

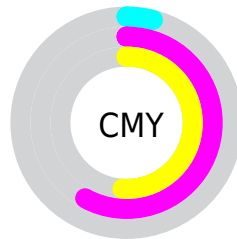


Cyan (0%)

Magenta (56%)

Yellow (49%)

Black (4%)



Cyan (4%)

Magenta (58%)

Yellow (51%)

Brightness & Saturation Gradients

These gradients show how the Decimal color 16084093 changes by changing the brightness by 10 percent. The first figure shows a shift by +10% for each color and the second figure -10%.

Similar to the brightness gradients but the following saturation gradients show a change of the Decimal color 16084093 by changing the saturation by 10% instead.

 16084093

 16084093

16777215

 14045540

 16753585

 12072012

 16761037

 10096950

 16768489

 8126497

 16775935

 6225931

 4390913

 2424833

 0

 16084093

 16084093

■ 16077928

■ 16090258

■ 16071506

■ 16096680

■ 16065085

■ 16103101

■ 16058919

■ 16109267

■ 16056350

■ 16115688

■ 16121854

■ 16121855

Harmonies

Analogous

The Analogous color harmony consists of three colors that are next to each other on the color wheel.



15363504



16084093



15170384

Triad

The Triadic color harmony groups three colors that are evenly spaced from another and form a triangle on the color wheel.



16084093



6072913



42235

Complementary

The Complementary color scheme is a pair of colors which are on the opposite of each other on the color wheel.



16084093



7140836

Split Complementary

Split-complementary colors differ from the complementary color scheme. The scheme consists of three colors, the original color and two neighbors of the complement color.



44770



16084093



45185

Square

The Square scheme is like the rectangle color scheme, but the four colors are evenly spaced on the color wheel.



16084093



9936688



45493



7640313

Rectangle

The Rectangle color scheme consists of four colors that form a rectangle on the color wheel.



16084093



13797433



45493



43253

Sweetspot

The Sweet Spot groups the original color and five complimentary colors.



16084093



16766169



14904565



8414825



0



8421504

Same Dimension

The Same Dimension uses a secret algorithm to generate beautiful new colors.



16084093



16733289



16096876



8023664



12189719



3866631

Inverse Universe

The Inverse Universe completely reimagines the original color for something new.



16084093



16733289



7128053



8023664



12189719



3866631

Previews

White Background



This preview shows how the Decimal color 16084093 looks on a white background.

Color Contrast Check

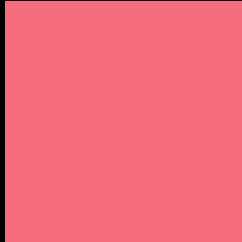
Large Text (above 18pt) WCAG AA × Fail

Any Text WCAG AA × Fail

Large Text (above 18pt) WCAG AAA × Fail

Any Text WCAG AAA × Fail

Black Background



This preview shows how the Decimal color 16084093 looks on a black background.

Color Contrast Check

Large Text (above 18pt) WCAG AA ✓ Pass

Any Text WCAG AA ✓ Pass

Large Text (above 18pt) WCAG AAA ✓ Pass

Any Text WCAG AAA ✓ Pass

If you want to check with other color combinations, try the [Color Contrast Checker](#).

Decimal 16084093 Background



This preview shows how black text looks on a background with the Decimal color 16084093.



This preview shows how white text looks on a background with the Decimal color 16084093.

Color Blindness Simulation

Color vision deficiency is a very complex topic, and I could not describe the different causes any better than Wikipedia does, so if you want to learn more, you should check out their [article about color blindness](#).

Dichromacy



Original Color
16084093

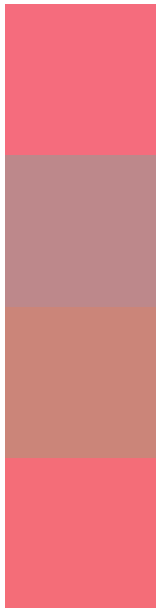
Protanopia
10328211

Deuteranopia
11768695



Tritanopia
16018805

Trichromacy



Original Color
16084093

Protanomaly
12421259

Deuteranomaly
13337977

Tritanomaly
16018808

Monochromacy



Original Color
16084093

Achromatopsia
9934743

Achromatomaly
12158862

CSS Examples

Text

The CSS property to change the color of the text to Decimal 16084093 is called "color". The color property can be set on classes, ids or directly on the HTML element.

This example shows how text in the color #F56C7D looks like.

```
.text, #text, p{  
  color:#F56C7D  
}
```

If you want to add a text shadow in that color use the text-shadow property, you can generate a text shadow directly with our [CSS Text Shadow Generator](#).

Here you see how black text with a 4 pixel #F56C7D colored shadow looks like.

```
.shadow{ text-shadow: 4px 4px 2px #F56C7D
}
```

Border

The CSS property to change the border of an element to Decimal 16084093 is called "border". The border property can be set on classes, ids or directly on the HTML element.

This example shows the color as border, it can be applied via the CSS property "border" or "border-color".

```
.border, #border, table{ border:4px solid
#F56C7D }
```

If only the border color should be changed use the property `border-color`.

```
.border{ border-color:#F56C7D }
```

If you want to add a box shadow in that color use:

Here you see how a box with a 4 pixel #F56C7D colored shadow looks like.

```
.boxshadow{ -moz-box-shadow:4px 4px 4px  
4px #F56C7D; -webkit-box-shadow:4px 4px  
4px 4px #F56C7D; box-shadow:4px 4px 4px  
4px #F56C7D }
```

Background

The CSS property to change the background color of an element to Decimal 16084093 is called "background". The background property can be set on classes, ids or directly on the HTML element.

```
.background, #background, body{  
background:#F56C7D }
```

If only the background color should be changed can be used:

```
.background{ background-color:#F56C7D }
```

This example shows the color as background, it is applied via the CSS property "background".

To optimize and compress your CSS code, you can use our [online CSS compressor and optimizer](#) based on csstidy. If you want to create a linear or radial gradient as background or border, check our [CSS Gradient Generator](#).

Hey! You found this booklet interesting? Support Converting Colors with the new Membership Option!

The pro membership hides all ads, plus gives you double the colors in the color bucket, and more awesome pro features!

[Learn more, Memberships starting at \\$2.50/m!](#)

**Follow me
on Twitter!**

@ConvertingColor