

Converting Colors

Decimal(16137321)

Have a look what the booklet for
Decimal(16137321) contains.

Decimal(16137321)	3
<i>Conversions</i>	4
<i>Details</i>	6
<i>Harmonies</i>	11
<i>Previews</i>	23
<i>Color Blindness Simulation</i>	26
<i>CSS Examples</i>	29

Color

Decimal(16137321)

Conversions

Conversions Part 1

Format	Color
Hex	F63C69
RGB	246, 60, 105
RGB Percent	96%, 24%, 41%
CMY	0.0353, 0.7647, 0.5882
CMYK	0.00, 0.76, 0.57, 0.04
HSL	345°, 91%, 60%
HSV	345°, 76%, 96%
XYZ	42.1717, 23.8445, 15.7443
YIQ	120.7440, 96.4110, 53.4270

Conversions

Conversions Part 2

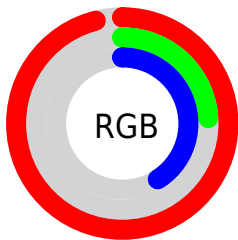
Format	Color
R_{YB}	246, 60, 105
Decimal	16137321
CIE _{Lab}	55.93, 71.31, 19.05
CIE _{LCh}	56, 73.805, 14.954
Yxy	23.8445, 0.5158, 0.2916
Android (android.graphics.Color)	4294327401 (0xFFFF63C69)
YUV	120.7440, -7.7618, 109.8495
Hunter-Lab	48.8308, 68.7039, 15.0649

Details

The Decimal color **16137321** is a dark color, and the websafe version is hex **FF3366**. The color can be described as middle washed rose. A complement of this color would be **3995337**, and the grayscale version is **7960953**.

A 20% lighter version of the original color is **16743068**, and **11993146** is the 20% darker color. If you saturate the color by 10%, you get **16130902**, and if you desaturate by 10%, it is **16143740**.

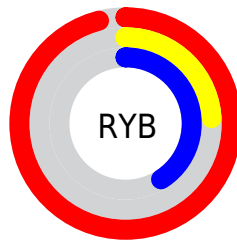
Distribution



Red (96%)

Green (24%)

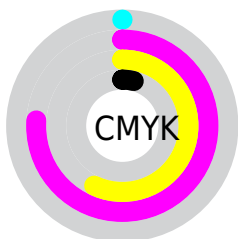
Blue (41%)



Red (96%)

Yellow (24%)

Blue (41%)

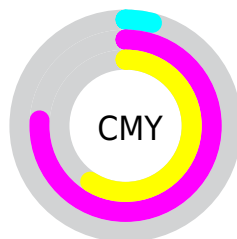


Cyan (0%)

Magenta (76%)

Yellow (57%)

Black (4%)



Cyan (4%)


Magenta (76%)

Yellow (59%)

Brightness & Saturation Gradients

These gradients show how the Decimal color 16137321 changes by changing the brightness by 10 percent. The first figure shows a shift by +10% for each color and the second figure -10%.

Similar to the brightness gradients but the following saturation gradients show a change of the Decimal color 16137321 by changing the saturation by 10% instead.

 16137321

 16137321

16777215

 14028113

 16743068

 11993146

 16750775

 9895973

 16758226

 7929874

 16765934


 5898242

 16773631

 3932163

 1507328

 0

 16137321

 16137321

16130902

16143740

16124740

16149902

16121916

16156321

16162484

16168902

16175321

16181484

16187390

16187391

Harmonies

Analogous

The Analogous color harmony consists of three colors that are next to each other on the color wheel.



15156137



16137321



15030572

Triad

The Triadic color harmony groups three colors that are evenly spaced from another and form a triangle on the color wheel.



16137321



3250716



38911

Complementary

The Complementary color scheme is a pair of colors which are on the opposite of each other on the color wheel.



16137321



3995337

Split Complementary

Split-complementary colors differ from the complementary color scheme. The scheme consists of three colors, the original color and two neighbors of the complement color.



41184



16137321



41058

Square

The Square scheme is like the rectangle color scheme, but the four colors are evenly spaced on the color wheel.



16137321



8686848



41637



1213439

Rectangle

The Rectangle color scheme consists of four colors that form a rectangle on the color wheel.



16137321



13331968



41637



39931

Sweetspot

The Sweet Spot groups the original color and five complimentary colors.



16137321



16762067



13122806



8412260



0



8421504

Same Dimension

The Same Dimension uses a secret algorithm to generate beautiful new colors.



16137321



16717647



16149052



8023665



12189741



3866638

Inverse Universe

The Inverse Universe completely reimagines the original color for something new.



16137321



16717647



3983606



8023665



12189741



3866638

Previews

White Background



This preview shows how the Decimal color 16137321 looks on a white background.

Color Contrast Check

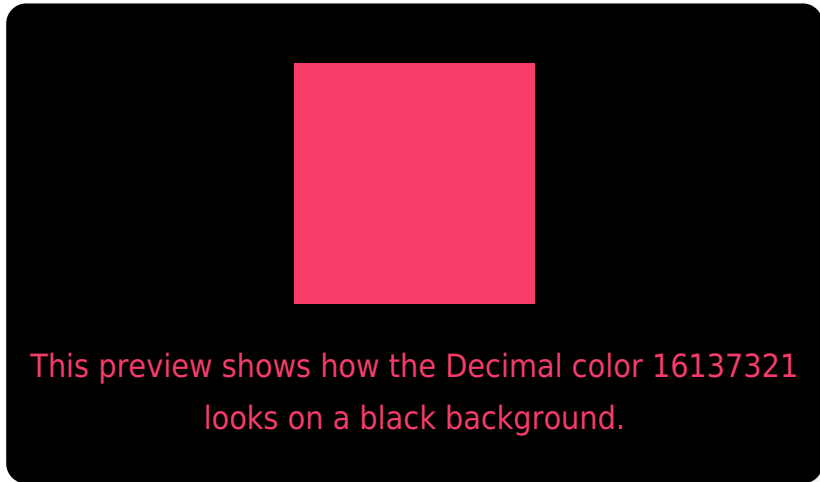
Large Text (above 18pt) WCAG AA ✓ Pass

Any Text WCAG AA × Fail

Large Text (above 18pt) WCAG AAA × Fail

Any Text WCAG AAA × Fail

Black Background



Color Contrast Check

Large Text (above 18pt) WCAG AA ✓ Pass

Any Text WCAG AA ✓ Pass

Large Text (above 18pt) WCAG AAA ✓ Pass

Any Text WCAG AAA × Fail

If you want to check with other color combinations, try the [Color Contrast Checker](#).

Decimal 16137321 Background



This preview shows how black text looks on a background with the Decimal color 16137321.



This preview shows how white text looks on a background with the Decimal color 16137321.

Color Blindness Simulation

Color vision deficiency is a very complex topic, and I could not describe the different causes any better than Wikipedia does, so if you want to learn more, you should check out their [article about color blindness](#).

Dichromacy

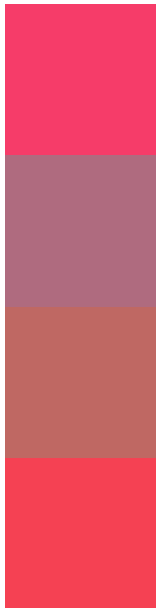


Original Color
16137321

Protanopia
8881804

Deuteranopia
10518880

Trichromacy



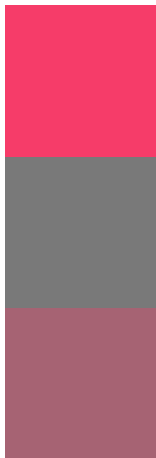
Original Color
16137321

Protanomaly
11496319

Deuteranomaly
12544099

Tritanomaly
16073043

Monochromacy



Original Color
16137321

Achromatopsia
7960953

Achromatomaly
10904435

CSS Examples

Text

The CSS property to change the color of the text to Decimal 16137321 is called "color". The color property can be set on classes, ids or directly on the HTML element.

This example shows how text in the color #F63C69 looks like.

```
.text, #text, p{  
    color:#F63C69  
}
```

If you want to add a text shadow in that color use the text-shadow property, you can generate a text shadow directly with our [CSS Text Shadow Generator](#).

Here you see how black text with a 4 pixel #F63C69 colored shadow looks like.

```
.shadow{ text-shadow: 4px 4px 2px #F63C69
}
```

Border

The CSS property to change the border of an element to Decimal 16137321 is called "border". The border property can be set on classes, ids or directly on the HTML element.

This example shows the color as border, it can be applied via the CSS property "border" or "border-color".

```
.border, #border, table{ border:4px solid
#F63C69 }
```

If only the border color should be changed use the property `border-color`.

```
.border{ border-color:#F63C69 }
```

If you want to add a box shadow in that color use:

Here you see how a box with a 4 pixel #F63C69 colored shadow looks like.

```
.boxshadow{ -moz-box-shadow:4px 4px 4px  
4px #F63C69; -webkit-box-shadow:4px 4px  
4px 4px #F63C69; box-shadow:4px 4px 4px  
4px #F63C69 }
```

Background

The CSS property to change the background color of an element to Decimal 16137321 is called "background". The background property can be set on classes, ids or directly on the HTML element.

```
.background, #background, body{  
background:#F63C69 }
```

If only the background color should be changed can be used:

```
.background{ background-color:#F63C69 }
```

This example shows the color as background, it is applied via the CSS property "background".

To optimize and compress your CSS code, you can use our [online CSS compressor and optimizer](#) based on csstidy. If you want to create a linear or radial gradient as background or border, check our [CSS Gradient Generator](#).

Hey! You found this booklet interesting? Support Converting Colors with the new Membership Option!

The pro membership hides all ads, plus gives you double the colors in the color bucket, and more awesome pro features!

[Learn more, Memberships starting at \\$2.50/m!](#)

**Follow me
on Twitter!**

@ConvertingColor