

Converting Colors

Decimal(16147581)

Have a look what the booklet for
Decimal(16147581) contains.

Decimal(16147581)	3
<i>Conversions</i>	4
<i>Details</i>	6
<i>Harmonies</i>	11
<i>Previews</i>	23
<i>Color Blindness Simulation</i>	26
<i>CSS Examples</i>	29

Color

Decimal(16147581)

Conversions

Conversions Part 1

Format	Color
Hex	F6647D
RGB	246, 100, 125
RGB Percent	96%, 39%, 49%
CMY	0.0353, 0.6078, 0.5098
CMYK	0.00, 0.59, 0.49, 0.04
HSL	350°, 89%, 68%
HSV	350°, 59%, 96%
XYZ	46.2649, 30.1878, 22.7904
YIQ	146.5040, 78.9910, 38.7270

Conversions

Conversions Part 2

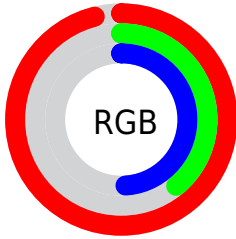
Format	Color
R _Y B	246, 100, 125
Decimal	16147581
CIE Lab	61.82, 57.90, 15.42
CIE LCh	62, 59.919, 14.910
Yxy	30.1878, 0.4662, 0.3042
Android (android.graphics.Color)	4294337661 (0xFFFF6647D)
YUV	146.5040, -10.6015, 87.2580
Hunter-Lab	54.9435, 54.1540, 13.8670

Details

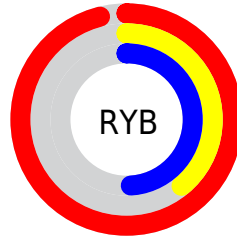
The Decimal color **16147581** is a light color, and the websafe version is hex **FF6699**. A complement of this color would be **6616797**, and the grayscale version is **9671571**.

A 20% lighter version of the original color is **16751793**, and **12134732** is the 20% darker color. If you saturate the color by 10%, you get **16141161**, and if you desaturate by 10%, it is **16154001**.

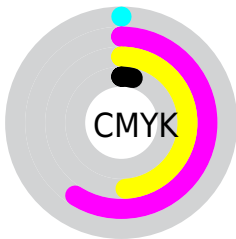
Distribution



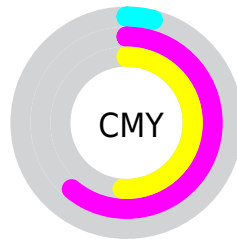
- Red (96%)
- Green (39%)
- Blue (49%)



- Red (96%)
- Yellow (39%)
- Blue (49%)



- Cyan (0%)
- Magenta (59%)
- Yellow (49%)
- Black (4%)



- Cyan (4%)
- Magenta (61%)
- Yellow (51%)

Brightness & Saturation Gradients

These gradients show how the Decimal color 16147581 changes by changing the brightness by 10 percent. The first figure shows a shift by +10% for each color and the second figure -10%.

Similar to the brightness gradients but the following saturation gradients show a change of the Decimal color 16147581 by changing the saturation by 10% instead.

 16147581

 16147581

16777215

 14108772

 16751793

 12134732

 16759245

 10092598

 16766441

 8192033

 16774143

 6225931

 4456450

 2359297

 0

 16147581

 16147581

■ 16141161

■ 16154001

■ 16134996

■ 16160166

■ 16128576

■ 16166586

■ 16122411

■ 16172751

■ 16121898

■ 16179171

■ 16185591

■ 16187391

Harmonies

Analogous

The Analogous color harmony consists of three colors that are next to each other on the color wheel.



15231154



16147581



15299660

Triad

The Triadic color harmony groups three colors that are evenly spaced from another and form a triangle on the color wheel.



16147581



6006597



41980

Complementary

The Complementary color scheme is a pair of colors which are on the opposite of each other on the color wheel.



16147581



6616797

Split Complementary

Split-complementary colors differ from the complementary color scheme. The scheme consists of three colors, the original color and two neighbors of the complement color.



44255



16147581



44408

Square

The Square scheme is like the rectangle color scheme, but the four colors are evenly spaced on the color wheel.



16147581



10001186



44975



6394620

Rectangle

The Rectangle color scheme consists of four colors that form a rectangle on the color wheel.



16147581



13926962



44975



42997

Sweetspot

The Sweet Spot groups the original color and five complimentary colors.



16147581



16765401



14378230



8414056



0



8421504

Same Dimension

The Same Dimension uses a secret algorithm to generate beautiful new colors.



16147581



16730729



16159332



8023664



12189728



3866634

Inverse Universe

The Inverse Universe completely reimagines the original color for something new.



16147581



16730729



6605046



8023664



12189728



3866634

Previews

White Background



This preview shows how the Decimal color 16147581 looks on a white background.

Color Contrast Check

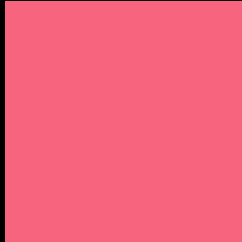
Large Text (above 18pt) WCAG AA × Fail

Any Text WCAG AA × Fail

Large Text (above 18pt) WCAG AAA × Fail

Any Text WCAG AAA × Fail

Black Background



This preview shows how the Decimal color 16147581 looks on a black background.

Color Contrast Check

Large Text (above 18pt) WCAG AA ✓ Pass

Any Text WCAG AA ✓ Pass

Large Text (above 18pt) WCAG AAA ✓ Pass

Any Text WCAG AAA ✓ Pass

If you want to check with other color combinations, try the [Color Contrast Checker](#).

Decimal 16147581 Background



This preview shows how black text looks on a background with the Decimal color 16147581.



This preview shows how white text looks on a background with the Decimal color 16147581.

Color Blindness Simulation

Color vision deficiency is a very complex topic, and I could not describe the different causes any better than Wikipedia does, so if you want to learn more, you should check out their [article about color blindness](#).

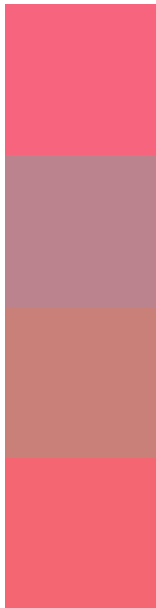
Dichromacy





Tritanopia
16082798

Trichromacy



Original Color
16147581

Protanomaly
12223373

Deuteranomaly
13205625

Tritanomaly
16082547

Monochromacy



Original Color
16147581

Achromatopsia
9671571

Achromatomaly
12026507

CSS Examples

Text

The CSS property to change the color of the text to Decimal 16147581 is called "color". The color property can be set on classes, ids or directly on the HTML element.

This example shows how text in the color #F6647D looks like.

```
.text, #text, p{  
    color:#F6647D  
}
```

If you want to add a text shadow in that color use the text-shadow property, you can generate a text shadow directly with our [CSS Text Shadow Generator](#).

Here you see how black text with a 4 pixel #F6647D colored shadow looks like.

```
.shadow{ text-shadow: 4px 4px 2px #F6647D
}
```

Border

The CSS property to change the border of an element to Decimal 16147581 is called "border". The border property can be set on classes, ids or directly on the HTML element.

This example shows the color as border, it can be applied via the CSS property "border" or "border-color".

```
.border, #border, table{ border:4px solid
#F6647D }
```

If only the border color should be changed use the property `border-color`.

```
.border{ border-color:#F6647D }
```

If you want to add a box shadow in that color use:

Here you see how a box with a 4 pixel #F6647D colored shadow looks like.

```
.boxshadow{ -moz-box-shadow:4px 4px 4px  
4px #F6647D; -webkit-box-shadow:4px 4px  
4px 4px #F6647D; box-shadow:4px 4px 4px  
4px #F6647D }
```

Background

The CSS property to change the background color of an element to Decimal 16147581 is called "background". The background property can be set on classes, ids or directly on the HTML element.

```
.background, #background, body{  
background:#F6647D }
```

If only the background color should be changed can be used:

```
.background{ background-color:#F6647D }
```

This example shows the color as background, it is applied via the CSS property "background".

To optimize and compress your CSS code, you can use our [online CSS compressor and optimizer](#) based on csstidy. If you want to create a linear or radial gradient as background or border, check our [CSS Gradient Generator](#).

Hey! You found this booklet interesting? Support Converting Colors with the new Membership Option!

The pro membership hides all ads, plus gives you double the colors in the color bucket, and more awesome pro features!

[Learn more, Memberships starting at \\$2.50/m!](#)

**Follow me
on Twitter!**

@ConvertingColor