

Converting Colors

Decimal(16203378)

Have a look what the booklet for
Decimal(16203378) contains.

Decimal(16203378)	3
<i>Conversions</i>	4
<i>Details</i>	6
<i>Harmonies</i>	11
<i>Previews</i>	23
<i>Color Blindness Simulation</i>	26
<i>CSS Examples</i>	29

Color

Decimal(16203378)

Conversions

Conversions Part 1

Format	Color
Hex	F73E72
RGB	247, 62, 114
RGB Percent	97%, 24%, 45%
CMY	0.0314, 0.7569, 0.5529
CMYK	0.00, 0.75, 0.54, 0.03
HSL	343°, 92%, 61%
HSV	343°, 75%, 97%
XYZ	43.1177, 24.4343, 18.3633
YIQ	123.2430, 93.5680, 55.3920

Conversions

Conversions Part 2

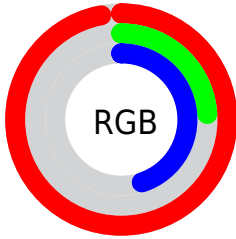
Format	Color
R_{YB}	247, 62, 114
Decimal	16203378
CIE _{Lab}	56.52, 71.60, 14.54
CIE _{LCh}	57, 73.061, 11.475
Yxy	24.4343, 0.5019, 0.2844
Android (android.graphics.Color)	4294393458 (0xFF73E72)
YUV	123.2430, -4.5568, 108.5349
Hunter-Lab	49.4311, 69.1973, 12.5759

Details

The Decimal color **16203378** is a dark color, and the websafe version is hex **FF3366**. The color can be described as middle washed rose. A complement of this color would be **4126659**, and the grayscale version is **8092539**.

A 20% lighter version of the original color is **16743590**, and **12058691** is the 20% darker color. If you saturate the color by 10%, you get **16196960**, and if you desaturate by 10%, it is **16209796**.

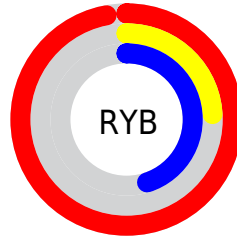
Distribution



Red (97%)

Green (24%)

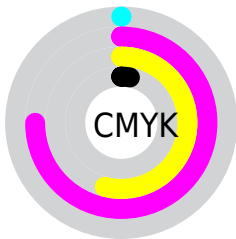
Blue (45%)



Red (97%)

Yellow (24%)

Blue (45%)

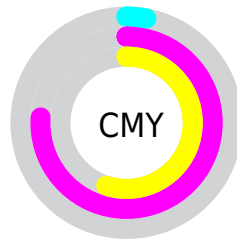


Cyan (0%)

Magenta (75%)

Yellow (54%)

Black (3%)



Cyan (3%)

Magenta (76%)

Yellow (55%)

Brightness & Saturation Gradients

These gradients show how the Decimal color 16203378 changes by changing the brightness by 10 percent. The first figure shows a shift by +10% for each color and the second figure -10%.

Similar to the brightness gradients but the following saturation gradients show a change of the Decimal color 16203378 by changing the saturation by 10% instead.

 16203378

 16203378

16777215

 14094938

 16743590

 12058691

 16751297

 10027053

 16758748

 7995417

 16766457

 6029314

 16774143

 4063235

 1769473

 0

 16203378

 16203378

16196960

16209796

16190798

16215958

16187461

16222375

16228793

16235211

16241373

16247790

16252927

Harmonies

Analogous

The Analogous color harmony consists of three colors that are next to each other on the color wheel.



14961074



16203378



15292213

Triad

The Triadic color harmony groups three colors that are evenly spaced from another and form a triangle on the color wheel.



16203378



4364822



39679

Complementary

The Complementary color scheme is a pair of colors which are on the opposite of each other on the color wheel.



16203378



4126659

Split Complementary

Split-complementary colors differ from the complementary color scheme. The scheme consists of three colors, the original color and two neighbors of the complement color.



41691



16203378



41308

Square

The Square scheme is like the rectangle color scheme, but the four colors are evenly spaced on the color wheel.



16203378



9276416



42143



34815

Rectangle

The Rectangle color scheme consists of four colors that form a rectangle on the color wheel.



16203378



13790209



42143



40439

Sweetspot

The Sweet Spot groups the original color and five complimentary colors.



16203378



16762839



12795639



8412776



0



8421504

Same Dimension

The Same Dimension uses a secret algorithm to generate beautiful new colors.



16203378



16718170



16213566



8023666



12189748



3866640

Inverse Universe

The Inverse Universe completely reimagines the original color for something new.



16203378



16718170



4116471



8023666



12189748



3866640

Previews

White Background



This preview shows how the Decimal color 16203378 looks on a white background.

Color Contrast Check

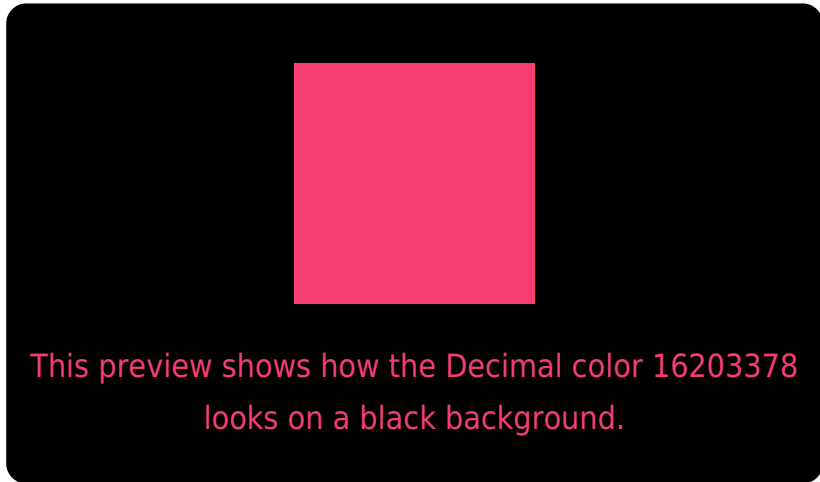
Large Text (above 18pt) WCAG AA ✓ Pass

Any Text WCAG AA × Fail

Large Text (above 18pt) WCAG AAA × Fail

Any Text WCAG AAA × Fail

Black Background



Color Contrast Check

Large Text (above 18pt) WCAG AA ✓ Pass

Any Text WCAG AA ✓ Pass

Large Text (above 18pt) WCAG AAA ✓ Pass

Any Text WCAG AAA × Fail

If you want to check with other color combinations, try the [Color Contrast Checker](#).

Decimal 16203378 Background



This preview shows how black text looks on a background with the Decimal color 16203378.

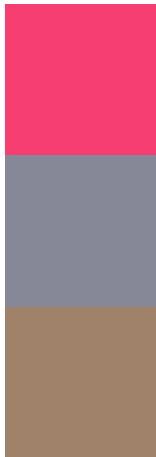


This preview shows how white text looks on a background with the Decimal color 16203378.

Color Blindness Simulation

Color vision deficiency is a very complex topic, and I could not describe the different causes any better than Wikipedia does, so if you want to learn more, you should check out their [article about color blindness](#).

Dichromacy

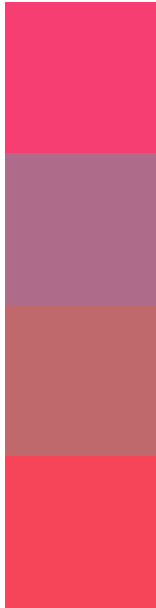


Original Color
16203378

Protanopia
8816535

Deuteranopia
10453609

Trichromacy



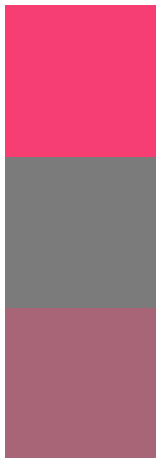
Original Color
16203378

Protanomaly
11496586

Deuteranomaly
12544364

Tritanomaly
16139353

Monochromacy



Original Color
16203378

Achromatopsia
8092539

Achromatomaly
11036024

CSS Examples

Text

The CSS property to change the color of the text to Decimal 16203378 is called "color". The color property can be set on classes, ids or directly on the HTML element.

This example shows how text in the color #F73E72 looks like.

```
.text, #text, p{  
  color:#F73E72  
}
```

If you want to add a text shadow in that color use the text-shadow property, you can generate a text shadow directly with our [CSS Text Shadow Generator](#).

Here you see how black text with a 4 pixel #F73E72 colored shadow looks like.

```
.shadow{ text-shadow: 4px 4px 2px #F73E72
}
```

Border

The CSS property to change the border of an element to Decimal 16203378 is called "border". The border property can be set on classes, ids or directly on the HTML element.

This example shows the color as border, it can be applied via the CSS property "border" or "border-color".

```
.border, #border, table{ border:4px solid
#F73E72 }
```

If only the border color should be changed use the property `border-color`.

```
.border{ border-color:#F73E72 }
```

If you want to add a box shadow in that color use:

Here you see how a box with a 4 pixel #F73E72 colored shadow looks like.

```
.boxshadow{ -moz-box-shadow:4px 4px 4px  
4px #F73E72; -webkit-box-shadow:4px 4px  
4px 4px #F73E72; box-shadow:4px 4px 4px  
4px #F73E72 }
```

Background

The CSS property to change the background color of an element to Decimal 16203378 is called "background". The background property can be set on classes, ids or directly on the HTML element.

```
.background, #background, body{  
background:#F73E72 }
```

If only the background color should be changed can be used:

```
.background{ background-color:#F73E72 }
```

This example shows the color as background, it is applied via the CSS property "background".

To optimize and compress your CSS code, you can use our [online CSS compressor and optimizer](#) based on csstidy. If you want to create a linear or radial gradient as background or border, check our [CSS Gradient Generator](#).

Hey! You found this booklet interesting? Support Converting Colors with the new Membership Option!

The pro membership hides all ads, plus gives you double the colors in the color bucket, and more awesome pro features!

[Learn more, Memberships starting at \\$2.50/m!](#)

**Follow me
on Twitter!**

@ConvertingColor