

Converting Colors

Decimal(16216984)

Have a look what the booklet for
Decimal(16216984) contains.

Decimal(16216984)	3
<i>Conversions</i>	4
<i>Details</i>	6
<i>Harmonies</i>	11
<i>Previews</i>	23
<i>Color Blindness Simulation</i>	26
<i>CSS Examples</i>	29

Color

Decimal(16216984)

Conversions

Conversions Part 1

Format	Color
Hex	F77398
RGB	247, 115, 152
RGB Percent	97%, 45%, 60%
CMY	0.0314, 0.5490, 0.4039
CMYK	0.00, 0.53, 0.38, 0.03
HSL	343°, 89%, 71%
HSV	343°, 53%, 97%
XYZ	50.1560, 34.3026, 33.6833
YIQ	158.6860, 66.7950, 39.4910

Conversions

Conversions Part 2

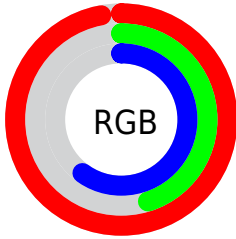
Format	Color
R _Y B	247, 115, 152
Decimal	16216984
CIE Lab	65.20, 54.04, 4.74
CIE LCh	65, 54.245, 5.013
Yxy	34.3026, 0.4245, 0.2904
Android (android.graphics.Color)	4294407064 (0xFFFF77398)
YUV	158.6860, -3.2962, 77.4514
Hunter-Lab	58.5684, 50.3665, 6.8996

Details

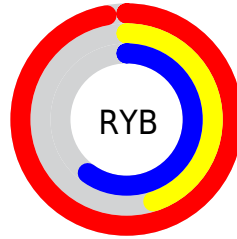
The Decimal color **16216984** is a light color, and the websafe version is hex **FF6699**. A complement of this color would be **7600082**, and the grayscale version is **10461087**.

A 20% lighter version of the original color is **16755662**, and **12270693** is the 20% darker color. If you saturate the color by 10%, you get **16210566**, and if you desaturate by 10%, it is **16223402**.

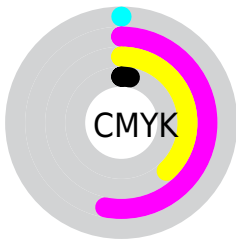
Distribution



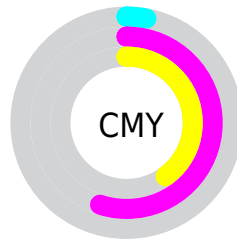
- Red (97%)
- Green (45%)
- Blue (60%)



- Red (97%)
- Yellow (45%)
- Blue (60%)



- Cyan (0%)
- Magenta (53%)
- Yellow (38%)
- Black (3%)



- Cyan (3%)
- Magenta (55%)
- Yellow (40%)

Brightness & Saturation Gradients

These gradients show how the Decimal color 16216984 changes by changing the brightness by 10 percent. The first figure shows a shift by +10% for each color and the second figure -10%.

Similar to the brightness gradients but the following saturation gradients show a change of the Decimal color 16216984 by changing the saturation by 10% instead.

 16216984

 16216984

16777215

 14243966

 16755662

 12270693

 16762858

 10296397

 16770303

 8388663

 6553634

 4718603

 2949121

 0

 16216984

 16216984

■ 16210566

■ 16223402

■ 16204404

■ 16229564

■ 16197987

■ 16235981

■ 16191569

■ 16242399

■ 16187461

■ 16248817

■ 16252927

Harmonies

Analogous

The Analogous color harmony consists of three colors that are next to each other on the color wheel.



14711752



16216984



15956841

Triad

The Triadic color harmony groups three colors that are evenly spaced from another and form a triangle on the color wheel.



16216984



8366922



44790

Complementary

The Complementary color scheme is a pair of colors which are on the opposite of each other on the color wheel.



16216984



760082

Split Complementary

Split-complementary colors differ from the complementary color scheme. The scheme consists of three colors, the original color and two neighbors of the complement color.



46549



16216984



3453811

Square

The Square scheme is like the rectangle color scheme, but the four colors are evenly spaced on the color wheel.



16216984



11705911



46757



5153279

Rectangle

The Rectangle color scheme consists of four colors that form a rectangle on the color wheel.



16216984



14976847



46757



45549

Sweetspot

The Sweet Spot groups the original color and five complimentary colors.



16216984



16766690



13792247



8415086



0



8421504

Same Dimension

The Same Dimension uses a secret algorithm to generate beautiful new colors.



16216984



16735370



16224371



8023666



12189748



3866640

Inverse Universe

The Inverse Universe completely reimagines the original color for something new.



16216984



16735370



7592695



8023666



12189748



3866640

Previews

White Background



This preview shows how the Decimal color 16216984 looks on a white background.

Color Contrast Check

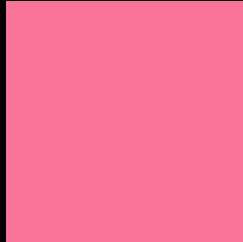
Large Text (above 18pt) WCAG AA × Fail

Any Text WCAG AA × Fail

Large Text (above 18pt) WCAG AAA × Fail

Any Text WCAG AAA × Fail

Black Background



This preview shows how the Decimal color 16216984 looks on a black background.

Color Contrast Check

Large Text (above 18pt) WCAG AA ✓ Pass

Any Text WCAG AA ✓ Pass

Large Text (above 18pt) WCAG AAA ✓ Pass

Any Text WCAG AAA ✓ Pass

If you want to check with other color combinations, try the [Color Contrast Checker](#).

Decimal 16216984 Background



This preview shows how black text looks on a background with the Decimal color 16216984.



This preview shows how white text looks on a background with the Decimal color 16216984.

Color Blindness Simulation

Color vision deficiency is a very complex topic, and I could not describe the different causes any better than Wikipedia does, so if you want to learn more, you should check out their [article about color blindness](#).

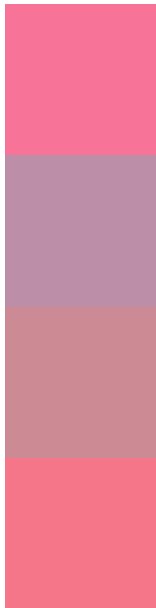
Dichromacy





Tritanopia
16086912

Trichromacy



Original Color
16216984

Protanomaly
12422824

Deuteranomaly
13405076

Tritanomaly
16152201

Monochromacy



Original Color
16216984

Achromatopsia
10461087

Achromatomaly
12554140

CSS Examples

Text

The CSS property to change the color of the text to Decimal 16216984 is called "color". The color property can be set on classes, ids or directly on the HTML element.

This example shows how text in the color #F77398 looks like.

```
.text, #text, p{  
    color:#F77398  
}
```

If you want to add a text shadow in that color use the text-shadow property, you can generate a text shadow directly with our [CSS Text Shadow Generator](#).

Here you see how black text with a 4 pixel #F77398 colored shadow looks like.

```
.shadow{ text-shadow: 4px 4px 2px #F77398
}
```

Border

The CSS property to change the border of an element to Decimal 16216984 is called "border". The border property can be set on classes, ids or directly on the HTML element.

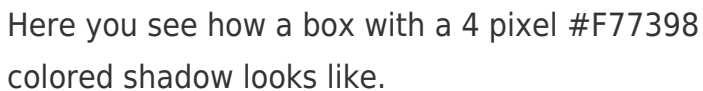
This example shows the color as border, it can be applied via the CSS property "border" or "border-color".

```
.border, #border, table{ border:4px solid
#F77398 }
```

If only the border color should be changed use the property `border-color`.

```
.border{ border-color:#F77398 }
```

If you want to add a box shadow in that color use:



Here you see how a box with a 4 pixel #F77398 colored shadow looks like.

```
.boxshadow{ -moz-box-shadow:4px 4px 4px  
4px #F77398; -webkit-box-shadow:4px 4px  
4px 4px #F77398; box-shadow:4px 4px 4px  
4px #F77398 }
```

Background

The CSS property to change the background color of an element to Decimal 16216984 is called "background". The background property can be set on classes, ids or directly on the HTML element.

```
.background, #background, body{  
background:#F77398 }
```

If only the background color should be changed can be used:

```
.background{ background-color:#F77398 }
```

This example shows the color as background, it is applied via the CSS property "background".

To optimize and compress your CSS code, you can use our [online CSS compressor and optimizer](#) based on csstidy. If you want to create a linear or radial gradient as background or border, check our [CSS Gradient Generator](#).

Hey! You found this booklet interesting? Support Converting Colors with the new Membership Option!

The pro membership hides all ads, plus gives you double the colors in the color bucket, and more awesome pro features!

[Learn more, Memberships starting at \\$2.50/m!](#)

**Follow me
on Twitter!**

@ConvertingColor