

Converting Colors

Decimal(16271473)

Have a look what the booklet for
Decimal(16271473) contains.

Decimal(16271473)	3
<i>Conversions</i>	4
<i>Details</i>	6
<i>Harmonies</i>	11
<i>Previews</i>	23
<i>Color Blindness Simulation</i>	26
<i>CSS Examples</i>	29

Color

Decimal(16271473)

Conversions

Conversions Part 1

Format	Color
Hex	F84871
RGB	248, 72, 113
RGB Percent	97%, 28%, 44%
CMY	0.0275, 0.7176, 0.5569
CMYK	0.00, 0.71, 0.54, 0.03
HSL	346°, 93%, 63%
HSV	346°, 71%, 97%
XYZ	44.0094, 25.7834, 18.2799
YIQ	129.2980, 91.7350, 50.0630

Conversions

Conversions Part 2

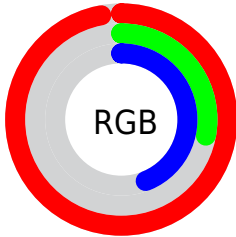
Format	Color
R_{YB}	248, 72, 113
Decimal	16271473
CIE _{Lab}	57.83, 68.58, 16.96
CIE _{LCh}	58, 70.647, 13.893
Yxy	25.7834, 0.4997, 0.2928
Android (android.graphics.Color)	4294461553 (0xFFFF84871)
YUV	129.2980, -8.0349, 104.1017
Hunter-Lab	50.7774, 65.8477, 14.1997

Details

The Decimal color **16271473** is a dark color, and the websafe version is hex **FF3366**. The color can be described as middle washed rose. A complement of this color would be **4782287**, and the grayscale version is **8487297**.

A 20% lighter version of the original color is **16745637**, and **12124226** is the 20% darker color. If you saturate the color by 10%, you get **16265054**, and if you desaturate by 10%, it is **16277892**.

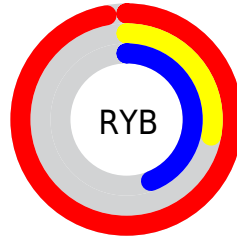
Distribution



Red (97%)

Green (28%)

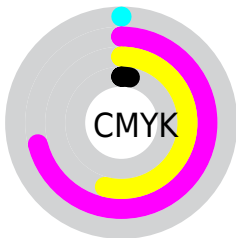
Blue (44%)



Red (97%)

Yellow (28%)

Blue (44%)

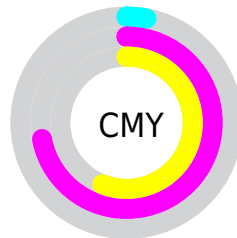


Cyan (0%)

Magenta (71%)

Yellow (54%)

Black (3%)



Cyan (3%)

Magenta (72%)

Yellow (56%)

Brightness & Saturation Gradients

These gradients show how the Decimal color 16271473 changes by changing the brightness by 10 percent. The first figure shows a shift by +10% for each color and the second figure -10%.

Similar to the brightness gradients but the following saturation gradients show a change of the Decimal color 16271473 by changing the saturation by 10% instead.

 16271473

 16271473

16777215

 14165081

 16745637

 12124226

 16753088

 10092588

 16760539

 8126488

 16768248

 6094849

 16775935

 4194307

 1966081

 0

 16271473

 16271473

■ 16265054

■ 16277892

■ 16258635

■ 16284311

■ 16252986

■ 16290474

■ 16296893

■ 16303312

■ 16309731

■ 16316150

■ 16318463

Harmonies

Analogous

The Analogous color harmony consists of three colors that are next to each other on the color wheel.



15224751



16271473



15228983

Triad

The Triadic color harmony groups three colors that are evenly spaced from another and form a triangle on the color wheel.



16271473



4365862



39935

Complementary

The Complementary color scheme is a pair of colors which are on the opposite of each other on the color wheel.



16271473



4782287

Split Complementary

Split-complementary colors differ from the complementary color scheme. The scheme consists of three colors, the original color and two neighbors of the complement color.



42464



16271473



42342

Square

The Square scheme is like the rectangle color scheme, but the four colors are evenly spaced on the color wheel.



16271473



9212160



42919



2722303

Rectangle

The Rectangle color scheme consists of four colors that form a rectangle on the color wheel.



16271473



13726474



42919



40954

Sweetspot

The Sweet Spot groups the original color and five complimentary colors.



16271473



16763350



13584632



8413287



0



8421504

Same Dimension

The Same Dimension uses a secret algorithm to generate beautiful new colors.



16271473



16721497



16283464



8220787



12386348



3997710

Inverse Universe

The Inverse Universe completely reimagines the original color for something new.



16271473



16721497



4770296



8220787



12386348



3997710

Previews

White Background



This preview shows how the Decimal color 16271473 looks on a white background.

Color Contrast Check

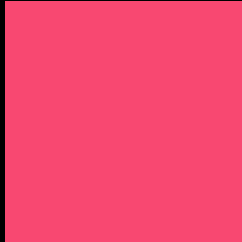
Large Text (above 18pt) WCAG AA ✓ Pass

Any Text WCAG AA × Fail

Large Text (above 18pt) WCAG AAA × Fail

Any Text WCAG AAA × Fail

Black Background



This preview shows how the Decimal color 16271473 looks on a black background.

Color Contrast Check

Large Text (above 18pt) WCAG AA ✓ Pass

Any Text WCAG AA ✓ Pass

Large Text (above 18pt) WCAG AAA ✓ Pass

Any Text WCAG AAA × Fail

If you want to check with other color combinations, try the [Color Contrast Checker](#).

Decimal 16271473 Background



This preview shows how black text looks on a background with the Decimal color 16271473.




This preview shows how white text looks on a background with the Decimal color 16271473.

Color Blindness Simulation

Color vision deficiency is a very complex topic, and I could not describe the different causes any better than Wikipedia does, so if you want to learn more, you should check out their [article about color blindness](#).

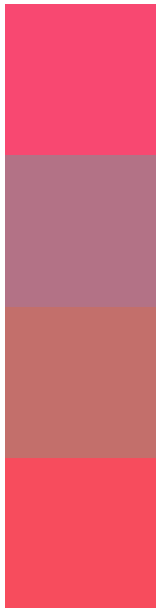
Dichromacy





Tritanopia
16141906

Trichromacy



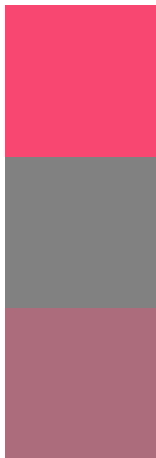
Original Color
16271473

Protanomaly
11760262

Deuteranomaly
12808043

Tritanomaly
16206941

Monochromacy



Original Color
16271473

Achromatopsia
8487297

Achromatomaly
11299963

CSS Examples

Text

The CSS property to change the color of the text to Decimal 16271473 is called "color". The color property can be set on classes, ids or directly on the HTML element.

This example shows how text in the color #F84871 looks like.

```
.text, #text, p{  
  color:#F84871  
}
```

If you want to add a text shadow in that color use the text-shadow property, you can generate a text shadow directly with our [CSS Text Shadow Generator](#).

Here you see how black text with a 4 pixel #F84871 colored shadow looks like.

```
.shadow{ text-shadow: 4px 4px 2px #F84871
}
```

Border

The CSS property to change the border of an element to Decimal 16271473 is called "border". The border property can be set on classes, ids or directly on the HTML element.

This example shows the color as border, it can be applied via the CSS property "border" or "border-color".

```
.border, #border, table{ border:4px solid
#F84871 }
```

If only the border color should be changed use the property `border-color`.

```
.border{ border-color:#F84871 }
```

If you want to add a box shadow in that color use:

Here you see how a box with a 4 pixel #F84871 colored shadow looks like.

```
.boxshadow{ -moz-box-shadow:4px 4px 4px  
4px #F84871; -webkit-box-shadow:4px 4px  
4px 4px #F84871; box-shadow:4px 4px 4px  
4px #F84871 }
```

Background

The CSS property to change the background color of an element to Decimal 16271473 is called "background". The background property can be set on classes, ids or directly on the HTML element.

```
.background, #background, body{  
background:#F84871 }
```

If only the background color should be changed can be used:

```
.background{ background-color:#F84871 }
```

This example shows the color as background, it is applied via the CSS property "background".

To optimize and compress your CSS code, you can use our [online CSS compressor and optimizer](#) based on csstidy. If you want to create a linear or radial gradient as background or border, check our [CSS Gradient Generator](#).

Hey! You found this booklet interesting? Support Converting Colors with the new Membership Option!

The pro membership hides all ads, plus gives you double the colors in the color bucket, and more awesome pro features!

[Learn more, Memberships starting at \\$2.50/m!](#)

**Follow me
on Twitter!**

@ConvertingColor