

Converting Colors

Decimal(16274823)

Have a look what the booklet for
Decimal(16274823) contains.

Decimal(16274823)	3
<i>Conversions</i>	4
<i>Details</i>	6
<i>Harmonies</i>	11
<i>Previews</i>	23
<i>Color Blindness Simulation</i>	26
<i>CSS Examples</i>	29

Color

Decimal(16274823)

Conversions

Conversions Part 1

Format	Color
Hex	F85587
RGB	248, 85, 135
RGB Percent	97%, 33%, 53%
CMY	0.0275, 0.6667, 0.4706
CMYK	0.00, 0.66, 0.46, 0.03
HSL	342°, 92%, 65%
HSV	342°, 66%, 97%
XYZ	46.3331, 28.2027, 25.9233
YIQ	139.4370, 81.0980, 50.1060

Conversions

Conversions Part 2

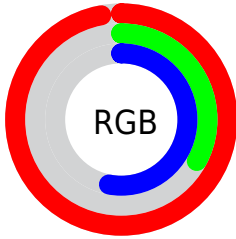
Format	Color
RYB	248, 85, 135
Decimal	16274823
CIELab	60.07, 65.61, 7.20
CIELCh	60, 66.008, 6.262
Yxy	28.2027, 0.4612, 0.2807
Android (android.graphics.Color)	4294464903 (0xFFFF85587)
YUV	139.4370, -2.1874, 95.2098
Hunter-Lab	53.1062, 62.7982, 8.2325

Details

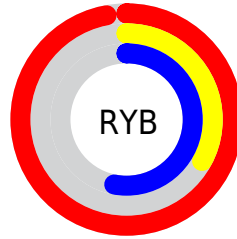
The Decimal color **16274823** is a light color, and the websafe version is hex **FF6699**. The color can be described as light muted rose. A complement of this color would be **5634246**, and the grayscale version is **9145227**.

A 20% lighter version of the original color is **16748476**, and **12191574** is the 20% darker color. If you saturate the color by 10%, you get **16268406**, and if you desaturate by 10%, it is **16281240**.

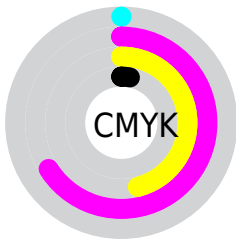
Distribution



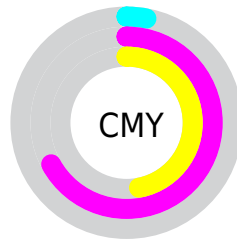
- Red (97%)
- Green (33%)
- Blue (53%)



- Red (97%)
- Yellow (33%)
- Blue (53%)



- Cyan (0%)
- Magenta (66%)
- Yellow (46%)
- Black (3%)



- Cyan (3%)
- Magenta (67%)
- Yellow (47%)

Brightness & Saturation Gradients

These gradients show how the Decimal color 16274823 changes by changing the brightness by 10 percent. The first figure shows a shift by +10% for each color and the second figure -10%.

Similar to the brightness gradients but the following saturation gradients show a change of the Decimal color 16274823 by changing the saturation by 10% instead.

 16274823

 16274823

16777215

 14235246

 16748476

 12191574

 16755928

 10223679

 16763380

 8257577

 16771071

 6291477

 4521987

 2359297

 0

 16274823

 16274823

■ 16268406

■ 16281240

■ 16261989

■ 16287657

■ 16255827

■ 16293819

■ 16253004

■ 16300236

■ 16306653

■ 16313070

■ 16318463

Harmonies

Analogous

The Analogous color harmony consists of three colors that are next to each other on the color wheel.



14705089



16274823



15819599

Triad

The Triadic color harmony groups three colors that are evenly spaced from another and form a triangle on the color wheel.



16274823



6594856



41979

Complementary

The Complementary color scheme is a pair of colors which are on the opposite of each other on the color wheel.



16274823



5634246

Split Complementary

Split-complementary colors differ from the complementary color scheme. The scheme consists of three colors, the original color and two neighbors of the complement color.



43732



16274823



43359

Square

The Square scheme is like the rectangle color scheme, but the four colors are evenly spaced on the color wheel.



16274823



10654208



44188



38143

Rectangle

The Rectangle color scheme consists of four colors that form a rectangle on the color wheel.



16274823



14578734



44188



42737

Sweetspot

The Sweet Spot groups the original color and five complimentary colors.



16274823



16764124



12867064



8413546



0



8421504

Same Dimension

The Same Dimension uses a secret algorithm to generate beautiful new colors.



16274823



16725619



16282453



8220788



12386362



3997715

Inverse Universe

The Inverse Universe completely reimagines the original color for something new.



16274823



16725619



5626616



8220788



12386362



3997715

Previews

White Background



This preview shows how the Decimal color 16274823 looks on a white background.

Color Contrast Check

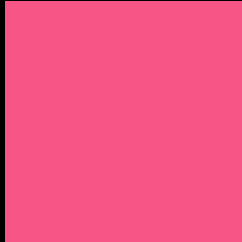
Large Text (above 18pt) WCAG AA ✓ Pass

Any Text WCAG AA × Fail

Large Text (above 18pt) WCAG AAA × Fail

Any Text WCAG AAA × Fail

Black Background



This preview shows how the Decimal color 16274823 looks on a black background.

Color Contrast Check

Large Text (above 18pt) WCAG AA ✓ Pass

Any Text WCAG AA ✓ Pass

Large Text (above 18pt) WCAG AAA ✓ Pass

Any Text WCAG AAA × Fail

If you want to check with other color combinations, try the [Color Contrast Checker](#).

Decimal 16274823 Background



This preview shows how black text looks on a background with the Decimal color 16274823.




This preview shows how white text looks on a background with the Decimal color 16274823.

Color Blindness Simulation

Color vision deficiency is a very complex topic, and I could not describe the different causes any better than Wikipedia does, so if you want to learn more, you should check out their [article about color blindness](#).

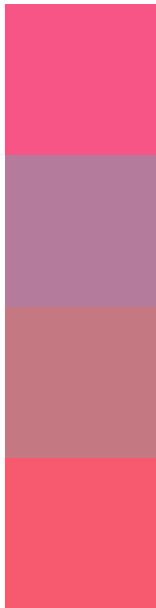
Dichromacy





Tritanopia
16145762

Trichromacy



Original Color
16274823

Protanomaly
11828125

Deuteranomaly
12875906

Tritanomaly
16210543

Monochromacy



Original Color
16274823

Achromatopsia
9145227

Achromatomaly
11761546

CSS Examples

Text

The CSS property to change the color of the text to Decimal 16274823 is called "color". The color property can be set on classes, ids or directly on the HTML element.

This example shows how text in the color #F85587 looks like.

```
.text, #text, p{  
    color:#F85587  
}
```

If you want to add a text shadow in that color use the text-shadow property, you can generate a text shadow directly with our [CSS Text Shadow Generator](#).

Here you see how black text with a 4 pixel #F85587 colored shadow looks like.

```
.shadow{ text-shadow: 4px 4px 2px #F85587
}
```

Border

The CSS property to change the border of an element to Decimal 16274823 is called "border". The border property can be set on classes, ids or directly on the HTML element.

This example shows the color as border, it can be applied via the CSS property "border" or "border-color".

```
.border, #border, table{ border:4px solid
#F85587 }
```

If only the border color should be changed use the property `border-color`.

```
.border{ border-color:#F85587 }
```

If you want to add a box shadow in that color use:

Here you see how a box with a 4 pixel #F85587 colored shadow looks like.

```
.boxshadow{ -moz-box-shadow:4px 4px 4px  
4px #F85587; -webkit-box-shadow:4px 4px  
4px 4px #F85587; box-shadow:4px 4px 4px  
4px #F85587 }
```

Background

The CSS property to change the background color of an element to Decimal 16274823 is called "background". The background property can be set on classes, ids or directly on the HTML element.

```
.background, #background, body{  
background:#F85587 }
```

If only the background color should be changed can be used:

```
.background{ background-color:#F85587 }
```

This example shows the color as background, it is applied via the CSS property "background".

To optimize and compress your CSS code, you can use our [online CSS compressor and optimizer](#) based on csstidy. If you want to create a linear or radial gradient as background or border, check our [CSS Gradient Generator](#).

Hey! You found this booklet interesting? Support Converting Colors with the new Membership Option!

The pro membership hides all ads, plus gives you double the colors in the color bucket, and more awesome pro features!

[Learn more, Memberships starting at \\$2.50/m!](#)

**Follow me
on Twitter!**

@ConvertingColor