

# Converting Colors

Decimal(16284299)

Have a look what the booklet for  
Decimal(16284299) contains.

<b>Decimal(16284299)</b> .....	3
<i><b>Conversions</b></i> .....	4
<i><b>Details</b></i> .....	6
<i><b>Harmonies</b></i> .....	11
<i><b>Previews</b></i> .....	23
<i><b>Color Blindness Simulation</b></i> .....	26
<i><b>CSS Examples</b></i> .....	29

# **Color**

**Decimal(16284299)**

# Conversions

## Conversions Part 1

Format	Color
Hex	F87A8B
RGB	248, 122, 139
RGB Percent	97%, 48%, 55%
CMY	0.0275, 0.5216, 0.4549
CMYK	0.00, 0.51, 0.44, 0.03
HSL	352°, 90%, 73%
HSV	352°, 51%, 97%
XYZ	50.3311, 35.7396, 28.6718
YIQ	161.6120, 69.6390, 31.9990

# Conversions

## Conversions Part 2

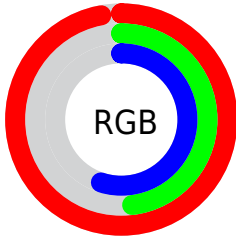
Format	Color
R <sub>Y</sub> B	248, 122, 139
Decimal	16284299
CIE Lab	66.32, 49.69, 13.74
CIE LCh	66, 51.551, 15.458
Yxy	35.7396, 0.4386, 0.3115
Android (android.graphics.Color)	4294474379 (0xFFFF87A8B)
YUV	161.6120, -11.1477, 75.7623
Hunter-Lab	59.7826, 45.6600, 13.4123

# Details

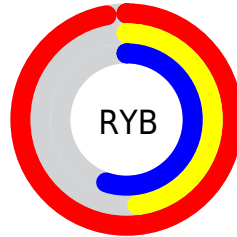
The Decimal color **16284299** is a light color, and the websafe version is hex **FF9999**. A complement of this color would be **8059111**, and the grayscale version is **10658466**.

A 20% lighter version of the original color is **16757184**, and **12338265** is the 20% darker color. If you saturate the color by 10%, you get **16277878**, and if you desaturate by 10%, it is **16290720**.

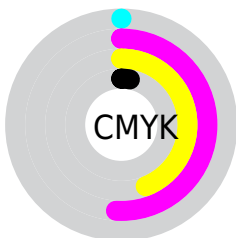
# Distribution



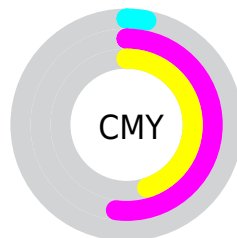
- Red (97%)
- Green (48%)
- Blue (55%)



- Red (97%)
- Yellow (48%)
- Blue (55%)



- Cyan (0%)
- Magenta (51%)
- Yellow (44%)
- Black (3%)



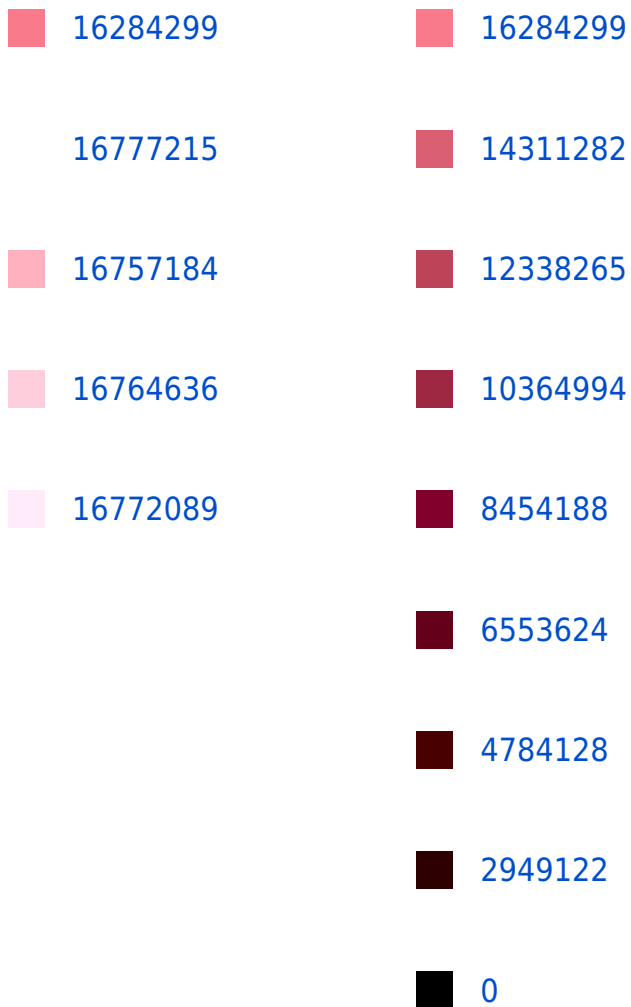
- Cyan (3%)
- Magenta (52%)
- Yellow (45%)

# Brightness & Saturation Gradients

These gradients show how the Decimal color 16284299 changes by changing the brightness by 10 percent. The first figure shows a shift by +10% for each color and the second figure -10%.

Similar to the brightness gradients but the following saturation gradients show a change of the Decimal color 16284299 by changing the saturation by 10% instead.





16284299 16284299

■ 16277878

■ 16290720

■ 16271456

■ 16297142

■ 16265291

■ 16303307

■ 16258869

■ 16309729

■ 16252961

■ 16316150

■ 16318463

# Harmonies

## Analogous

The Analogous color harmony consists of three colors that are next to each other on the color wheel.



15432890



16284299



15566433

# Triad

The Triadic color harmony groups three colors that are evenly spaced from another and form a triangle on the color wheel.



16284299



7385438



44538

# Complementary

The Complementary color scheme is a pair of colors which are on the opposite of each other on the color wheel.



16284299



8059111

# Split Complementary

Split-complementary colors differ from the complementary color scheme. The scheme consists of three colors, the original color and two neighbors of the complement color.



46562



16284299



833416

# Square

The Square scheme is like the rectangle color scheme, but the four colors are evenly spaced on the color wheel.



16284299



10856003



47544



8298235

# Rectangle

The Rectangle color scheme consists of four colors that form a rectangle on the color wheel.



16284299



14324044



47544



45301



# Sweetspot

The Sweet Spot groups the original color and five complimentary colors.



16284299



16767454



15039224



8415596



0



8421504



# Same Dimension

The Same Dimension uses a secret algorithm to generate beautiful new colors.



16284299



16737144



16295546



8220786



12386329



3997704



# Inverse Universe

The Inverse Universe completely reimagines the original color for something new.



16284299



16737144



8047864



8220786



12386329



3997704



# Previews

## White Background



This preview shows how the Decimal color 16284299 looks on a white background.

## Color Contrast Check

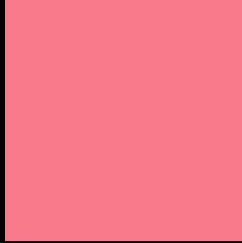
Large Text (above 18pt) WCAG AA × Fail

Any Text WCAG AA × Fail

Large Text (above 18pt) WCAG AAA × Fail

Any Text WCAG AAA × Fail

# Black Background



This preview shows how the Decimal color 16284299 looks on a black background.

## Color Contrast Check

Large Text (above 18pt) WCAG AA ✓ Pass

Any Text WCAG AA ✓ Pass

Large Text (above 18pt) WCAG AAA ✓ Pass

Any Text WCAG AAA ✓ Pass

If you want to check with other color combinations, try the [Color Contrast Checker](#).



## Decimal 16284299 Background



This preview shows how black text looks on a background with the Decimal color 16284299.



This preview shows how white text looks on a background with the Decimal color 16284299.

# Color Blindness Simulation

Color vision deficiency is a very complex topic, and I could not describe the different causes any better than Wikipedia does, so if you want to learn more, you should check out their [article about color blindness](#).

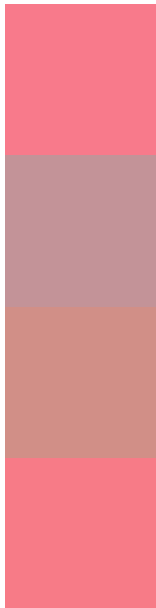
## Dichromacy





**Tritanopia**  
16219012

# Trichromacy



**Original Color**  
16284299

**Protanomaly**  
12817304

**Deuteranomaly**  
13733767

**Tritanomaly**  
16219015

# Monochromacy



**Original Color**  
16284299

**Achromatopsia**  
10658466

**Achromatomaly**  
12686234

# CSS Examples

## Text

The CSS property to change the color of the text to Decimal 16284299 is called "color". The color property can be set on classes, ids or directly on the HTML element.

This example shows how text in the color #F87A8B looks like.

```
.text, #text, p{  
  color:#F87A8B  
}
```

If you want to add a text shadow in that color use the text-shadow property, you can generate a text shadow directly with our [CSS Text Shadow Generator](#).

Here you see how black text with a 4 pixel #F87A8B colored shadow looks like.

```
.shadow{ text-shadow: 4px 4px 2px #F87A8B
}
```

## Border

The CSS property to change the border of an element to Decimal 16284299 is called "border". The border property can be set on classes, ids or directly on the HTML element.

This example shows the color as border, it can be applied via the CSS property "border" or "border-color".

```
.border, #border, table{ border:4px solid
#F87A8B }
```

If only the border color should be changed use the property `border-color`.

```
.border{ border-color:#F87A8B }
```

If you want to add a box shadow in that color use:

Here you see how a box with a 4 pixel #F87A8B colored shadow looks like.

```
.boxshadow{ -moz-box-shadow:4px 4px 4px  
4px #F87A8B; -webkit-box-shadow:4px 4px  
4px 4px #F87A8B; box-shadow:4px 4px 4px  
4px #F87A8B }
```

# Background

The CSS property to change the background color of an element to Decimal 16284299 is called "background". The background property can be set on classes, ids or directly on the HTML element.

```
.background, #background, body{  
background:#F87A8B }
```

If only the background color should be changed can be used:

```
.background{ background-color:#F87A8B }
```

This example shows the color as background, it is applied via the CSS property "background".

To optimize and compress your CSS code, you can use our [online CSS compressor and optimizer](#) based on csstidy. If you want to create a linear or radial gradient as background or border, check our [CSS Gradient Generator](#).



Hey! You found this booklet interesting? Support Converting Colors with the new Membership Option!

The pro membership hides all ads, plus gives you double the colors in the color bucket, and more awesome pro features!

**[Learn more, Memberships starting at \\$2.50/m!](#)**

**Follow me  
on Twitter!**

@ConvertingColor