

Converting Colors

Decimal(16291239)

Have a look what the booklet for
Decimal(16291239) contains.

Decimal(16291239)	3
<i>Conversions</i>	4
<i>Details</i>	6
<i>Harmonies</i>	11
<i>Previews</i>	23
<i>Color Blindness Simulation</i>	26
<i>CSS Examples</i>	29

Color

Decimal(16291239)

Conversions

Conversions Part 1

Format	Color
Hex	F895A7
RGB	248, 149, 167
RGB Percent	97%, 58%, 65%
CMY	0.0275, 0.4157, 0.3451
CMYK	0.00, 0.40, 0.33, 0.03
HSL	349°, 88%, 78%
HSV	349°, 40%, 97%
XYZ	56.4339, 44.2414, 42.1243
YIQ	180.6530, 53.2260, 26.5860

Conversions

Conversions Part 2

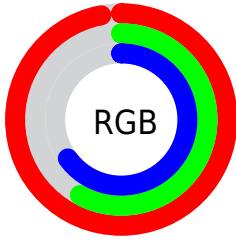
Format	Color
R _Y B	248, 149, 167
Decimal	16291239
CIE Lab	72.39, 39.26, 6.66
CIE LCh	72, 39.819, 9.634
Yxy	44.2414, 0.3952, 0.3098
Android (android.graphics.Color)	4294481319 (0xFF895A7)
YUV	180.6530, -6.7309, 59.0633
Hunter-Lab	66.5142, 35.0483, 9.0108

Details

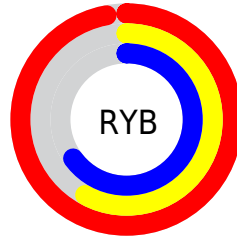
The Decimal color **16291239** is a light color, and the websafe version is hex **FF9999**. A complement of this color would be **9828582**, and the grayscale version is **11908533**.

A 20% lighter version of the original color is **16764126**, and **12410995** is the 20% darker color. If you saturate the color by 10%, you get **16284819**, and if you desaturate by 10%, it is **16297659**.

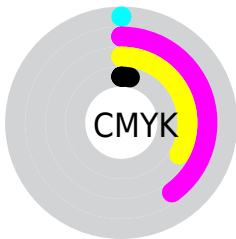
Distribution



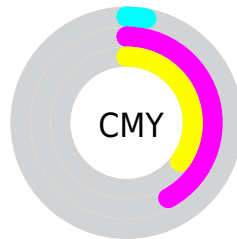
- Red (97%)
- Green (58%)
- Blue (65%)



- Red (97%)
- Yellow (58%)
- Blue (65%)



- Cyan (0%)
- Magenta (40%)
- Yellow (33%)
- Black (3%)



- Cyan (3%)
- Magenta (42%)
- Yellow (35%)

Brightness & Saturation Gradients

These gradients show how the Decimal color 16291239 changes by changing the brightness by 10 percent. The first figure shows a shift by +10% for each color and the second figure -10%.

Similar to the brightness gradients but the following saturation gradients show a change of the Decimal color 16291239 by changing the saturation by 10% instead.

 16291239

 16291239

16777215

 14318221

 16764126

 12410995

 16771579

 10569563

 8727875

 6885933

 5111833

 3538945

 1048576

 0

 16291239

 16291239

 16284819

 16297659

 16278398

 16304080

 16272234

 16310244

 16265814

 16316664

 16259394

 16318463

 16252973

Harmonies

Analogous

The Analogous color harmony consists of three colors that are next to each other on the color wheel.



15309260



16291239



15965061

Triad

The Triadic color harmony groups three colors that are evenly spaced from another and form a triangle on the color wheel.



16291239



9878904



5160181

Complementary

The Complementary color scheme is a pair of colors which are on the opposite of each other on the color wheel.



16291239



9828582

Split Complementary

Split-complementary colors differ from the complementary color scheme. The scheme consists of three colors, the original color and two neighbors of the complement color.



50143



16291239



6865815

Square

The Square scheme is like the rectangle color scheme, but the four colors are evenly spaced on the color wheel.



16291239



12497769



3261884



9482745

Rectangle

The Rectangle color scheme consists of four colors that form a rectangle on the color wheel.



16291239



15180404



3261884



3522543

Sweetspot

The Sweet Spot groups the original color and five complimentary colors.



16291239



16769254



15111672



8416881



0



8421504

Same Dimension

The Same Dimension uses a secret algorithm to generate beautiful new colors.



16291239



16745883



16299157



8220787



12386338



3997707

Inverse Universe

The Inverse Universe completely reimagines the original color for something new.



16291239



16745883



9820664



8220787



12386338



3997707

Previews

White Background



This preview shows how the Decimal color 16291239 looks on a white background.

Color Contrast Check

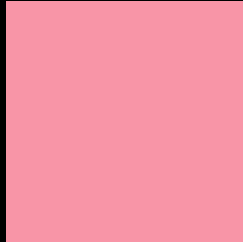
Large Text (above 18pt) WCAG AA × Fail

Any Text WCAG AA × Fail

Large Text (above 18pt) WCAG AAA × Fail

Any Text WCAG AAA × Fail

Black Background



This preview shows how the Decimal color 16291239 looks on a black background.

Color Contrast Check

Large Text (above 18pt) WCAG AA ✓ Pass

Any Text WCAG AA ✓ Pass

Large Text (above 18pt) WCAG AAA ✓ Pass

Any Text WCAG AAA ✓ Pass

If you want to check with other color combinations, try the [Color Contrast Checker](#).

Decimal 16291239 Background



This preview shows how black text looks on a background with the Decimal color 16291239.



This preview shows how white text looks on a background with the Decimal color 16291239.

Color Blindness Simulation

Color vision deficiency is a very complex topic, and I could not describe the different causes any better than Wikipedia does, so if you want to learn more, you should check out their [article about color blindness](#).


Dichromacy



Original Color
16291239

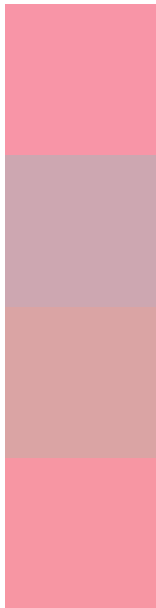
Protanopia
11841975

Deuteranopia
13216931



Tritanopia
16225953

Trichromacy



Original Color
16291239

Protanomaly
13477809

Deuteranomaly
14328996

Tritanomaly
16225955

Monochromacy



Original Color
16291239

Achromatopsia
11908533

Achromatomaly
13478320

CSS Examples

Text

The CSS property to change the color of the text to Decimal 16291239 is called "color". The color property can be set on classes, ids or directly on the HTML element.

This example shows how text in the color #F895A7 looks like.

```
.text, #text, p{  
    color:#F895A7  
}
```

If you want to add a text shadow in that color use the text-shadow property, you can generate a text shadow directly with our [CSS Text Shadow Generator](#).

Here you see how black text with a 4 pixel #F895A7 colored shadow looks like.

```
.shadow{ text-shadow: 4px 4px 2px #F895A7
}
```

Border

The CSS property to change the border of an element to Decimal 16291239 is called "border". The border property can be set on classes, ids or directly on the HTML element.

This example shows the color as border, it can be applied via the CSS property "border" or "border-color".

```
.border, #border, table{ border:4px solid
#F895A7 }
```

If only the border color should be changed use the property `border-color`.

```
.border{ border-color:#F895A7 }
```

If you want to add a box shadow in that color use:

Here you see how a box with a 4 pixel #F895A7 colored shadow looks like.

```
.boxshadow{ -moz-box-shadow:4px 4px 4px  
4px #F895A7; -webkit-box-shadow:4px 4px  
4px 4px #F895A7; box-shadow:4px 4px 4px  
4px #F895A7 }
```

Background

The CSS property to change the background color of an element to Decimal 16291239 is called "background". The background property can be set on classes, ids or directly on the HTML element.

```
.background, #background, body{  
background:#F895A7 }
```

If only the background color should be changed can be used:

```
.background{ background-color:#F895A7 }
```

This example shows the color as background, it is applied via the CSS property "background".

To optimize and compress your CSS code, you can use our [online CSS compressor and optimizer](#) based on csstidy. If you want to create a linear or radial gradient as background or border, check our [CSS Gradient Generator](#).

Hey! You found this booklet interesting? Support Converting Colors with the new Membership Option!

The pro membership hides all ads, plus gives you double the colors in the color bucket, and more awesome pro features!

[Learn more, Memberships starting at \\$2.50/m!](#)

**Follow me
on Twitter!**

@ConvertingColor