

Converting Colors

Decimal(16350363)

Have a look what the booklet for
Decimal(16350363) contains.

Decimal(16350363)	3
<i>Conversions</i>	4
<i>Details</i>	6
<i>Harmonies</i>	11
<i>Previews</i>	23
<i>Color Blindness Simulation</i>	26
<i>CSS Examples</i>	29

Color

Decimal(16350363)

Conversions

Conversions Part 1

Format	Color
Hex	F97C9B
RGB	249, 124, 155
RGB Percent	98%, 49%, 61%
CMY	0.0235, 0.5137, 0.3922
CMYK	0.00, 0.50, 0.38, 0.02
HSL	345°, 91%, 73%
HSV	345°, 50%, 98%
XYZ	52.1910, 36.9216, 35.3862
YIQ	164.9090, 64.5490, 36.1410

Conversions

Conversions Part 2

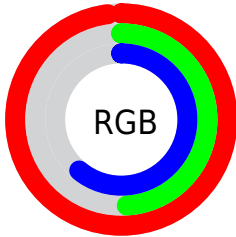
Format	Color
R _Y B	249, 124, 155
Decimal	16350363
CIE Lab	67.22, 50.74, 5.97
CIE LCh	67, 51.090, 6.715
Yxy	36.9216, 0.4192, 0.2966
Android (android.graphics.Color)	4294540443 (0xFFFF97C9B)
YUV	164.9090, -4.8851, 73.7478
Hunter-Lab	60.7631, 46.9826, 8.0059

Details

The Decimal color **16350363** is a light color, and the websafe version is hex **FF6699**. A complement of this color would be **8190426**, and the grayscale version is **10855845**.

A 20% lighter version of the original color is **16757713**, and **12404328** is the 20% darker color. If you saturate the color by 10%, you get **16343944**, and if you desaturate by 10%, it is **16356782**.

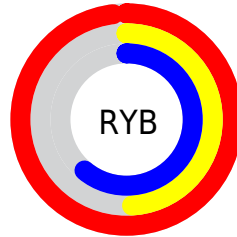
Distribution



Red (98%)

Green (49%)

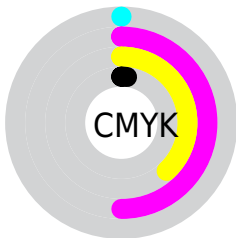
Blue (61%)



Red (98%)

Yellow (49%)

Blue (61%)

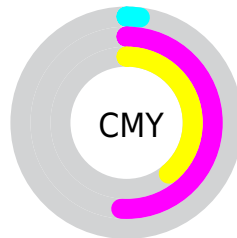


Cyan (0%)

Magenta (50%)

Yellow (38%)

Black (2%)



Cyan (2%)

Magenta (51%)

Yellow (39%)

Brightness & Saturation Gradients

These gradients show how the Decimal color 16350363 changes by changing the brightness by 10 percent. The first figure shows a shift by +10% for each color and the second figure -10%.

Similar to the brightness gradients but the following saturation gradients show a change of the Decimal color 16350363 by changing the saturation by 10% instead.

 16350363

 16350363

16777215

 14377345

 16757713

 12404328

 16765166

 10496592

 16772607

 8585785

 6750244

 4915215

 3211266

 0

 16350363

 16350363

 16343944

 16356782

 16337526

 16363200

 16331107

 16369619

 16324688

 16376038

 16318526

 16382457

 16383999

Harmonies

Analogous

The Analogous color harmony consists of three colors that are next to each other on the color wheel.



14975945



16350363



16024687

Triad

The Triadic color harmony groups three colors that are evenly spaced from another and form a triangle on the color wheel.



16350363



8696151



45815

Complementary

The Complementary color scheme is a pair of colors which are on the opposite of each other on the color wheel.



16350363



8190426

Split Complementary

Split-complementary colors differ from the complementary color scheme. The scheme consists of three colors, the original color and two neighbors of the complement color.



47577



16350363



4241534

Square

The Square scheme is like the rectangle color scheme, but the four colors are evenly spaced on the color wheel.



16350363



11904324



48045



6661631

Rectangle

The Rectangle color scheme consists of four colors that form a rectangle on the color wheel.



16350363



15109719



48045



46576

Sweetspot

The Sweet Spot groups the original color and five complimentary colors.



16350363



16767458



14318841



8415598



0



8421504

Same Dimension

The Same Dimension uses a secret algorithm to generate beautiful new colors.



16350363



16737932



16358268



8220788



12386351



3997711

Inverse Universe

The Inverse Universe completely reimagines the original color for something new.



16350363



16737932



8182521



8220788



12386351



3997711

Previews

White Background



This preview shows how the Decimal color 16350363 looks on a white background.

Color Contrast Check

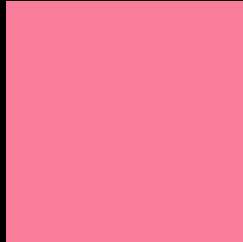
Large Text (above 18pt) WCAG AA × Fail

Any Text WCAG AA × Fail

Large Text (above 18pt) WCAG AAA × Fail

Any Text WCAG AAA × Fail

Black Background



This preview shows how the Decimal color 16350363 looks on a black background.

Color Contrast Check

Large Text (above 18pt) WCAG AA ✓ Pass

Any Text WCAG AA ✓ Pass

Large Text (above 18pt) WCAG AAA ✓ Pass

Any Text WCAG AAA ✓ Pass

If you want to check with other color combinations, try the [Color Contrast Checker](#).

Decimal 16350363 Background



This preview shows how black text looks on a background with the Decimal color 16350363.



This preview shows how white text looks on a background with the Decimal color 16350363.

Color Blindness Simulation

Color vision deficiency is a very complex topic, and I could not describe the different causes any better than Wikipedia does, so if you want to learn more, you should check out their [article about color blindness](#).

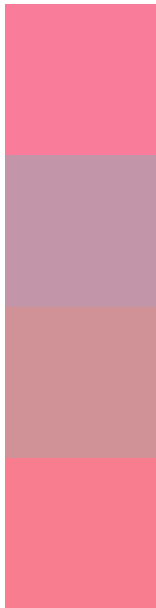
Dichromacy





Tritanopia
16220040

Trichromacy



Original Color
16350363

Protanomaly
12752297

Deuteranomaly
13669015

Tritanomaly
16285327

Monochromacy



Original Color
16350363

Achromatopsia
10855845

Achromatomaly
12883617

CSS Examples

Text

The CSS property to change the color of the text to Decimal 16350363 is called "color". The color property can be set on classes, ids or directly on the HTML element.

This example shows how text in the color #F97C9B looks like.

```
.text, #text, p{  
    color:#F97C9B  
}
```

If you want to add a text shadow in that color use the text-shadow property, you can generate a text shadow directly with our [CSS Text Shadow Generator](#).

Here you see how black text with a 4 pixel #F97C9B colored shadow looks like.

```
.shadow{ text-shadow: 4px 4px 2px #F97C9B
}
```

Border

The CSS property to change the border of an element to Decimal 16350363 is called "border". The border property can be set on classes, ids or directly on the HTML element.

This example shows the color as border, it can be applied via the CSS property "border" or "border-color".

```
.border, #border, table{ border:4px solid
#F97C9B }
```

If only the border color should be changed use the property `border-color`.

```
.border{ border-color:#F97C9B }
```

If you want to add a box shadow in that color use:

Here you see how a box with a 4 pixel #F97C9B colored shadow looks like.

```
.boxshadow{ -moz-box-shadow:4px 4px 4px  
4px #F97C9B; -webkit-box-shadow:4px 4px  
4px 4px #F97C9B; box-shadow:4px 4px 4px  
4px #F97C9B }
```

Background

The CSS property to change the background color of an element to Decimal 16350363 is called "background". The background property can be set on classes, ids or directly on the HTML element.

```
.background, #background, body{  
background:#F97C9B }
```

If only the background color should be changed can be used:

```
.background{ background-color:#F97C9B }
```

This example shows the color as background, it is applied via the CSS property "background".

To optimize and compress your CSS code, you can use our [online CSS compressor and optimizer](#) based on csstidy. If you want to create a linear or radial gradient as background or border, check our [CSS Gradient Generator](#).

Hey! You found this booklet interesting? Support Converting Colors with the new Membership Option!

The pro membership hides all ads, plus gives you double the colors in the color bucket, and more awesome pro features!

[Learn more, Memberships starting at \\$2.50/m!](#)

**Follow me
on Twitter!**

@ConvertingColor