

Converting Colors

Decimal(16351638)

Have a look what the booklet for
Decimal(16351638) contains.

Decimal(16351638)	3
<i>Conversions</i>	4
<i>Details</i>	6
<i>Harmonies</i>	11
<i>Previews</i>	23
<i>Color Blindness Simulation</i>	26
<i>CSS Examples</i>	29

Color

Decimal(16351638)

Conversions

Conversions Part 1

Format	Color
Hex	F98196
RGB	249, 129, 150
RGB Percent	98%, 51%, 59%
CMY	0.0235, 0.4941, 0.4118
CMYK	0.00, 0.48, 0.40, 0.02
HSL	350°, 91%, 74%
HSV	350°, 48%, 98%
XYZ	52.4222, 38.0423, 33.4341
YIQ	167.2740, 64.7790, 31.9710

Conversions

Conversions Part 2

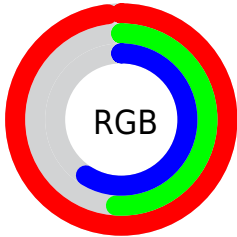
Format	Color
R_{YB}	249, 129, 150
Decimal	16351638
CIE Lab	68.05, 47.75, 9.99
CIE LCh	68, 48.784, 11.814
Yxy	38.0423, 0.4231, 0.3070
Android (android.graphics.Color)	4294541718 (0xFFFF98196)
YUV	167.2740, -8.5161, 71.6737
Hunter-Lab	61.6784, 43.7749, 11.0355

Details

The Decimal color **16351638** is a light color, and the websafe version is hex **FF9999**. A complement of this color would be **8518116**, and the grayscale version is **10987431**.

A 20% lighter version of the original color is **16758988**, and **12405859** is the 20% darker color. If you saturate the color by 10%, you get **16345217**, and if you desaturate by 10%, it is **16358059**.

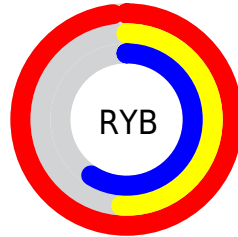
Distribution



Red (98%)

Green (51%)

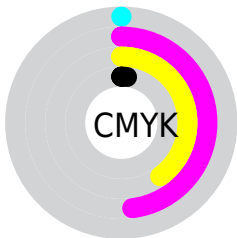
Blue (59%)



Red (98%)

Yellow (51%)

Blue (59%)

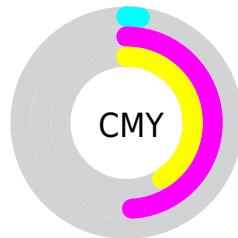


Cyan (0%)

Magenta (48%)

Yellow (40%)

Black (2%)



Cyan (2%)

Magenta (49%)

Yellow (41%)

Brightness & Saturation Gradients

These gradients show how the Decimal color 16351638 changes by changing the brightness by 10 percent. The first figure shows a shift by +10% for each color and the second figure -10%.

Similar to the brightness gradients but the following saturation gradients show a change of the Decimal color 16351638 by changing the saturation by 10% instead.

 16351638

 16351638

16777215

 14378620

 16758988

 12405859

 16766440

 10498124

 16773887

 8589621

 6750240

 4915208

 3276802

 0

 16351638

 16351638

 16345217

 16358059

 16338797

 16364479

 16332376

 16370900

 16325956

 16377320

 16319791

 16383741

 16318508

 16383999

Harmonies

Analogous

The Analogous color harmony consists of three colors that are next to each other on the color wheel.



15304130



16351638



15829613

Triad

The Triadic color harmony groups three colors that are evenly spaced from another and form a triangle on the color wheel.



16351638



8369250



45817

Complementary

The Complementary color scheme is a pair of colors which are on the opposite of each other on the color wheel.



16351638



8518116

Split Complementary

Split-complementary colors differ from the complementary color scheme. The scheme consists of three colors, the original color and two neighbors of the complement color.



47839



16351638



3914377

Square

The Square scheme is like the rectangle color scheme, but the four colors are evenly spaced on the color wheel.



16351638



11512140



48310



8168956

Rectangle

The Rectangle color scheme consists of four colors that form a rectangle on the color wheel.



16351638



14783577



48310



46579

Sweetspot

The Sweet Spot groups the original color and five complimentary colors.



16351638



16767970



14909945



8415854



0



8421504

Same Dimension

The Same Dimension uses a secret algorithm to generate beautiful new colors.



16351638



16739205



16361345



8220787



12386337



3997707

Inverse Universe

The Inverse Universe completely reimagines the original color for something new.



16351638



16739205



8508409



8220787



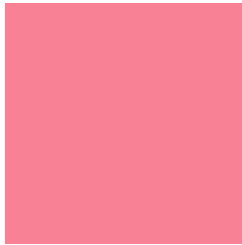
12386337



3997707

Previews

White Background



This preview shows how the Decimal color 16351638 looks on a white background.

Color Contrast Check

Large Text (above 18pt) WCAG AA × Fail

Any Text WCAG AA × Fail

Large Text (above 18pt) WCAG AAA × Fail

Any Text WCAG AAA × Fail

Black Background



This preview shows how the Decimal color 16351638 looks on a black background.

Color Contrast Check

Large Text (above 18pt) WCAG AA ✓ Pass

Any Text WCAG AA ✓ Pass

Large Text (above 18pt) WCAG AAA ✓ Pass

Any Text WCAG AAA ✓ Pass

If you want to check with other color combinations, try the [Color Contrast Checker](#).

Decimal 16351638 Background



This preview shows how black text looks on a background with the Decimal color 16351638.




This preview shows how white text looks on a background with the Decimal color 16351638.

Color Blindness Simulation

Color vision deficiency is a very complex topic, and I could not describe the different causes any better than Wikipedia does, so if you want to learn more, you should check out their [article about color blindness](#).

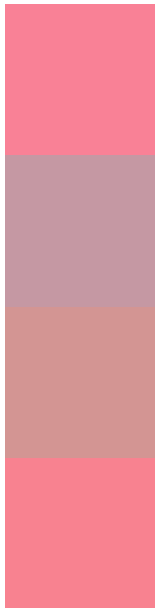
Dichromacy





Tritanopia
16286604

Trichromacy



Original Color
16351638

Protanomaly
12949667

Deuteranomaly
13866387

Tritanomaly
16286352

Monochromacy



Original Color
16351638

Achromatopsia
10987431

Achromatomaly
12949921

CSS Examples

Text

The CSS property to change the color of the text to Decimal 16351638 is called "color". The color property can be set on classes, ids or directly on the HTML element.

This example shows how text in the color #F98196 looks like.

```
.text, #text, p{  
    color:#F98196  
}
```

If you want to add a text shadow in that color use the text-shadow property, you can generate a text shadow directly with our [CSS Text Shadow Generator](#).

Here you see how black text with a 4 pixel #F98196 colored shadow looks like.

```
.shadow{ text-shadow: 4px 4px 2px #F98196
}
```

Border

The CSS property to change the border of an element to Decimal 16351638 is called "border". The border property can be set on classes, ids or directly on the HTML element.

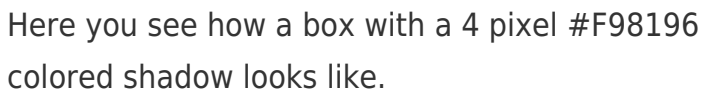
This example shows the color as border, it can be applied via the CSS property "border" or "border-color".

```
.border, #border, table{ border:4px solid
#F98196 }
```

If only the border color should be changed use the property `border-color`.

```
.border{ border-color:#F98196 }
```

If you want to add a box shadow in that color use:



Here you see how a box with a 4 pixel #F98196 colored shadow looks like.

```
.boxshadow{ -moz-box-shadow:4px 4px 4px  
4px #F98196; -webkit-box-shadow:4px 4px  
4px 4px #F98196; box-shadow:4px 4px 4px  
4px #F98196 }
```

Background

The CSS property to change the background color of an element to Decimal 16351638 is called "background". The background property can be set on classes, ids or directly on the HTML element.

```
.background, #background, body{  
background:#F98196 }
```

If only the background color should be changed can be used:

```
.background{ background-color:#F98196 }
```

This example shows the color as background, it is applied via the CSS property "background".

To optimize and compress your CSS code, you can use our [online CSS compressor and optimizer](#) based on csstidy. If you want to create a linear or radial gradient as background or border, check our [CSS Gradient Generator](#).

Hey! You found this booklet interesting? Support Converting Colors with the new Membership Option!

The pro membership hides all ads, plus gives you double the colors in the color bucket, and more awesome pro features!

[Learn more, Memberships starting at \\$2.50/m!](#)

**Follow me
on Twitter!**

@ConvertingColor