

# Converting Colors

Decimal(16394353)

Have a look what the booklet for  
Decimal(16394353) contains.

<b>Decimal(16394353)</b> .....	3
<i><b>Conversions</b></i> .....	4
<i><b>Details</b></i> .....	6
<i><b>Harmonies</b></i> .....	11
<i><b>Previews</b></i> .....	23
<i><b>Color Blindness Simulation</b></i> .....	26
<i><b>CSS Examples</b></i> .....	29

# Color

**Decimal(16394353)**

# Conversions

## Conversions Part 1

Format	Color
Hex	FA2871
RGB	250, 40, 113
RGB Percent	98%, 16%, 44%
CMY	0.0196, 0.8431, 0.5569
CMYK	0.00, 0.84, 0.55, 0.02
HSL	339°, 95%, 57%
HSV	339°, 84%, 98%
XYZ	43.1638, 23.0338, 17.7938
YIQ	111.1120, 101.7270, 67.2230

# Conversions

## Conversions Part 2

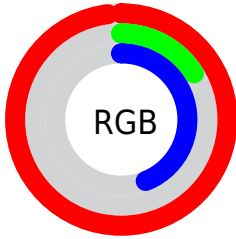
<b>Format</b>	<b>Color</b>
<b>R<sub>YB</sub></b>	250, 40, 113
Decimal	16394353
CIE <sub>Lab</sub>	55.11, 77.83, 13.25
CIE <sub>LCh</sub>	55, 78.948, 9.664
Yxy	23.0338, 0.5139, 0.2742
Android (android.graphics.Color)	4294584433 (0xFFFA2871)
YUV	111.1120, 0.9308, 121.8048
Hunter-Lab	47.9936, 76.5480, 11.6135

# Details

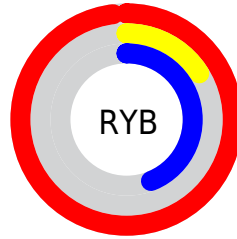
The Decimal color **16394353** is a dark color, and the websafe version is hex **FF0066**. The color can be described as middle washed rose. A complement of this color would be **2685617**, and the grayscale version is **7303023**.

A 20% lighter version of the original color is **16740260**, and **12189762** is the 20% darker color. If you saturate the color by 10%, you get **16387937**, and if you desaturate by 10%, it is **16400769**.

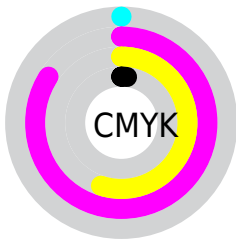
# Distribution



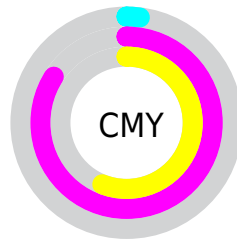
- Red (98%)
- Green (16%)
- Blue (44%)



- Red (98%)
- Yellow (16%)
- Blue (44%)



- Cyan (0%)
- Magenta (84%)
- Yellow (55%)
- Black (2%)



- Cyan (2%)
- Magenta (84%)
- Yellow (56%)

# Brightness & Saturation Gradients

These gradients show how the Decimal color 16394353 changes by changing the brightness by 10 percent. The first figure shows a shift by +10% for each color and the second figure -10%.

Similar to the brightness gradients but the following saturation gradients show a change of the Decimal color 16394353 by changing the saturation by 10% instead.



 16394353

 16394353


16777215

 14286937

 16740260

 12189762

 16747967

 10158124

 16755675

 8126489

 16763384

 6094851

 16771327

 4128771

 1769473

 0

 16394353

 16394353

16387937

16400769

16384087

16407186

16413602

16420018

16426435

16432851

16439267

16445683

16449535

# Harmonies

## Analogous

The Analogous color harmony consists of three colors that are next to each other on the color wheel.



14957749



16394353



15485487

# Triad

The Triadic color harmony groups three colors that are evenly spaced from another and form a triangle on the color wheel.



16394353



3905280



39167

# Complementary

The Complementary color scheme is a pair of colors which are on the opposite of each other on the color wheel.



16394353



2685617

# Split Complementary

Split-complementary colors differ from the complementary color scheme. The scheme consists of three colors, the original color and two neighbors of the complement color.



41178



16394353



40785

# Square

The Square scheme is like the rectangle color scheme, but the four colors are evenly spaced on the color wheel.



16394353



9209856



41369



34559

# Rectangle

The Rectangle color scheme consists of four colors that form a rectangle on the color wheel.



16394353



13919232



41369



40186



# Sweetspot

The Sweet Spot groups the original color and five complimentary colors.



16394353



16760789



11610362



8411495



0



8421504



# Same Dimension

The Same Dimension uses a secret algorithm to generate beautiful new colors.



16394353



16711769



16402472



8220789



12386370



3997717



# Inverse Universe

The Inverse Universe completely reimagines the original color for something new.



16394353



16711769



2677498



8220789



12386370



3997717



# Previews

## White Background



This preview shows how the Decimal color 16394353 looks on a white background.

## Color Contrast Check

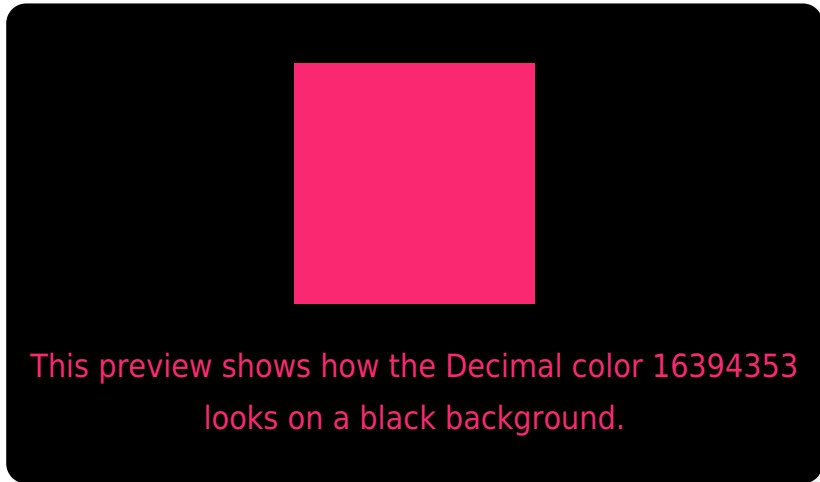
Large Text (above 18pt) WCAG AA ✓ Pass

Any Text WCAG AA ✗ Fail

Large Text (above 18pt) WCAG AAA ✗ Fail

Any Text WCAG AAA ✗ Fail

# Black Background



## Color Contrast Check

Large Text (above 18pt) WCAG AA ✓ Pass

Any Text WCAG AA ✓ Pass

Large Text (above 18pt) WCAG AAA ✓ Pass

Any Text WCAG AAA × Fail

If you want to check with other color combinations, try the [Color Contrast Checker](#).



## Decimal 16394353 Background



This preview shows how black text looks on a background with the Decimal color 16394353.



This preview shows how white text looks on a background with the Decimal color 16394353.

# Color Blindness Simulation

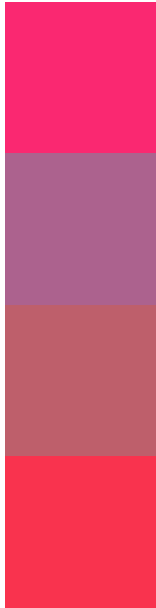
Color vision deficiency is a very complex topic, and I could not describe the different causes any better than Wikipedia does, so if you want to learn more, you should check out their [article about color blindness](#).

## Dichromacy





# Trichromacy



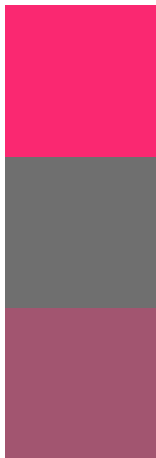
**Original Color**  
16394353

**Protanomaly**  
11297422

**Deuteranomaly**  
12476267

**Tritanomaly**  
16331598

# Monochromacy



**Original Color**  
16394353

**Achromatopsia**  
7303023

**Achromatomaly**  
10638704

# CSS Examples

## Text

The CSS property to change the color of the text to Decimal 16394353 is called "color". The color property can be set on classes, ids or directly on the HTML element.

This example shows how text in the color #FA2871 looks like.

```
.text, #text, p{  
    color:#FA2871  
}
```

If you want to add a text shadow in that color use the text-shadow property, you can generate a text shadow directly with our [CSS Text Shadow Generator](#).

Here you see how black text with a 4 pixel #FA2871 colored shadow looks like.

```
.shadow{ text-shadow: 4px 4px 2px #FA2871
}
```

## Border

The CSS property to change the border of an element to Decimal 16394353 is called "border". The border property can be set on classes, ids or directly on the HTML element.

This example shows the color as border, it can be applied via the CSS property "border" or "border-color".

```
.border, #border, table{ border:4px solid
#FA2871 }
```

If only the border color should be changed use the property `border-color`.

```
.border{ border-color:#FA2871 }
```

If you want to add a box shadow in that color use:

Here you see how a box with a 4 pixel #FA2871 colored shadow looks like.

```
.boxshadow{ -moz-box-shadow:4px 4px 4px  
4px #FA2871; -webkit-box-shadow:4px 4px  
4px 4px #FA2871; box-shadow:4px 4px 4px  
4px #FA2871 }
```

# Background

The CSS property to change the background color of an element to Decimal 16394353 is called "background". The background property can be set on classes, ids or directly on the HTML element.

```
.background, #background, body{  
background:#FA2871 }
```

If only the background color should be changed can be used:

```
.background{ background-color:#FA2871 }
```

This example shows the color as background, it is applied via the CSS property "background".

To optimize and compress your CSS code, you can use our [online CSS compressor and optimizer](#) based on csstidy. If you want to create a linear or radial gradient as background or border, check our [CSS Gradient Generator](#).



Hey! You found this booklet interesting? Support Converting Colors with the new Membership Option!

The pro membership hides all ads, plus gives you double the colors in the color bucket, and more awesome pro features!

**[Learn more, Memberships starting at \\$2.50/m!](#)**

**Follow me  
on Twitter!**

**@ConvertingColor**