

# Converting Colors

Decimal(16399737)

Have a look what the booklet for  
Decimal(16399737) contains.

<b>Decimal(16399737)</b> .....	3
<i><b>Conversions</b></i> .....	4
<i><b>Details</b></i> .....	6
<i><b>Harmonies</b></i> .....	11
<i><b>Previews</b></i> .....	23
<i><b>Color Blindness Simulation</b></i> .....	26
<i><b>CSS Examples</b></i> .....	29

**Color**

**Decimal(16399737)**

# Conversions

## Conversions Part 1

<b>Format</b>	<b>Color</b>
Hex	FA3D79
RGB	250, 61, 121
RGB Percent	98%, 24%, 47%
CMY	0.0196, 0.7608, 0.5255
CMYK	0.00, 0.76, 0.52, 0.02
HSL	341°, 95%, 61%
HSV	341°, 76%, 98%
XYZ	44.5443, 25.0420, 20.5750
YIQ	124.3510, 93.3840, 58.7280

# Conversions

## Conversions Part 2

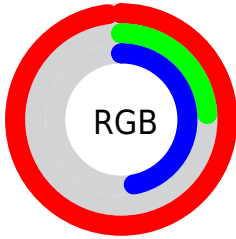
<b>Format</b>	<b>Color</b>
<b>R<sub>YB</sub></b>	250, 61, 121
Decimal	16399737
CIE <sub>Lab</sub>	57.12, 73.22, 11.29
CIE <sub>LCh</sub>	57, 74.087, 8.768
Yxy	25.0420, 0.4941, 0.2777
Android (android.graphics.Color)	4294589817 (0xFFFA3D79)
YUV	124.3510, -1.6520, 110.1942
Hunter-Lab	50.0419, 71.3164, 10.6520

# Details

The Decimal color **16399737** is a dark color, and the websafe version is hex **FF3366**. The color can be described as middle washed rose. A complement of this color would be **4061886**, and the grayscale version is **8158332**.

A 20% lighter version of the original color is **16743597**, and **12255305** is the 20% darker color. If you saturate the color by 10%, you get **16393320**, and if you desaturate by 10%, it is **16406154**.

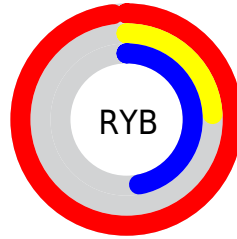
# Distribution



Red (98%)

Green (24%)

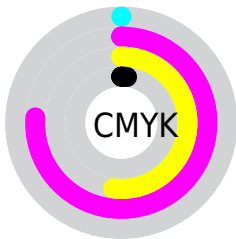
Blue (47%)



Red (98%)

Yellow (24%)

Blue (47%)

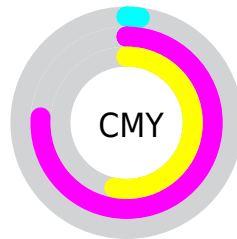


Cyan (0%)

Magenta (76%)

Yellow (52%)

Black (2%)



Cyan (2%)

Magenta (76%)

Yellow (53%)

# Brightness & Saturation Gradients

These gradients show how the Decimal color 16399737 changes by changing the brightness by 10 percent. The first figure shows a shift by +10% for each color and the second figure -10%.

Similar to the brightness gradients but the following saturation gradients show a change of the Decimal color 16399737 by changing the saturation by 10% instead.



 16399737

 16399737

16777215

 14290272

 16743597

 12255305

 16751304

 10223667

 16758756

 8192031

 16766463

 6225924

 16774143

 4325379

 2031617

 0

 16399737

 16399737

 16393320

 16406154

 16386903

 16412571

 16384079

 16418988

 16425405

 16431822

 16438239

 16444656

 16449535

# Harmonies

## Analogous

The Analogous color harmony consists of three colors that are next to each other on the color wheel.



14896313



16399737



15619387

# Triad

The Triadic color harmony groups three colors that are evenly spaced from another and form a triangle on the color wheel.



16399737



5020426



40447

# Complementary

The Complementary color scheme is a pair of colors which are on the opposite of each other on the color wheel.



16399737



4061886

# Split Complementary

Split-complementary colors differ from the complementary color scheme. The scheme consists of three colors, the original color and two neighbors of the complement color.



42201



16399737



41815

# Square

The Square scheme is like the rectangle color scheme, but the four colors are evenly spaced on the color wheel.



16399737



9735168



42651



35839

# Rectangle

The Rectangle color scheme consists of four colors that form a rectangle on the color wheel.



16399737



14182922



42651



41208



# Sweetspot

The Sweet Spot groups the original color and five complimentary colors.



16399737



16762071



12271098



8412263



0



8421504



# Same Dimension

The Same Dimension uses a secret algorithm to generate beautiful new colors.



16399737



16717665



16407869



8220788



12386364



3997715



# Inverse Universe

The Inverse Universe completely reimagines the original color for something new.



16399737



16717665



4053754



8220788



12386364

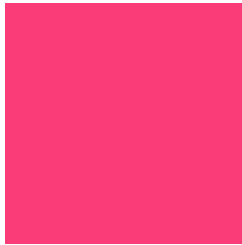


3997715



# Previews

## White Background



This preview shows how the Decimal color 16399737 looks on a white background.

## Color Contrast Check

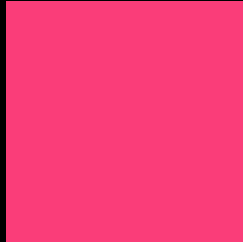
Large Text (above 18pt) WCAG AA ✓ Pass

Any Text WCAG AA × Fail

Large Text (above 18pt) WCAG AAA × Fail

Any Text WCAG AAA × Fail

# Black Background



This preview shows how the Decimal color 16399737 looks on a black background.

## Color Contrast Check

Large Text (above 18pt) WCAG AA ✓ Pass

Any Text WCAG AA ✓ Pass

Large Text (above 18pt) WCAG AAA ✓ Pass

Any Text WCAG AAA × Fail

If you want to check with other color combinations, try the [Color Contrast Checker](#).



# Decimal 16399737 Background



This preview shows how black text looks on a background with the Decimal color 16399737.




This preview shows how white text looks on a background with the Decimal color 16399737.

# Color Blindness Simulation

Color vision deficiency is a very complex topic, and I could not describe the different causes any better than Wikipedia does, so if you want to learn more, you should check out their [article about color blindness](#).

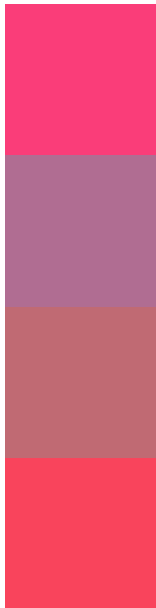
## Dichromacy





**Tritanopia**  
16271435

# Trichromacy



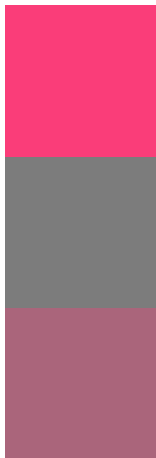
**Original Color**  
16399737

**Protanomaly**  
11562386

**Deuteranomaly**  
12610163

**Tritanomaly**  
16335964

# Monochromacy



**Original Color**  
16399737

**Achromatopsia**  
8158332

**Achromatomaly**  
11167099

# CSS Examples

## Text

The CSS property to change the color of the text to Decimal 16399737 is called "color". The color property can be set on classes, ids or directly on the HTML element.

This example shows how text in the color #FA3D79 looks like.

```
.text, #text, p{  
  color:#FA3D79  
}
```

If you want to add a text shadow in that color use the text-shadow property, you can generate a text shadow directly with our [CSS Text Shadow Generator](#).

Here you see how black text with a 4 pixel #FA3D79 colored shadow looks like.

```
.shadow{ text-shadow: 4px 4px 2px #FA3D79
}
```

## Border

The CSS property to change the border of an element to Decimal 16399737 is called "border". The border property can be set on classes, ids or directly on the HTML element.

This example shows the color as border, it can be applied via the CSS property "border" or "border-color".

```
.border, #border, table{ border:4px solid
#FA3D79 }
```

If only the border color should be changed use the property `border-color`.

```
.border{ border-color:#FA3D79 }
```

If you want to add a box shadow in that color use:

Here you see how a box with a 4 pixel #FA3D79 colored shadow looks like.

```
.boxshadow{ -moz-box-shadow:4px 4px 4px  
4px #FA3D79; -webkit-box-shadow:4px 4px  
4px 4px #FA3D79; box-shadow:4px 4px 4px  
4px #FA3D79 }
```

# Background

The CSS property to change the background color of an element to Decimal 16399737 is called "background". The background property can be set on classes, ids or directly on the HTML element.

```
.background, #background, body{  
background:#FA3D79 }
```

If only the background color should be changed can be used:

```
.background{ background-color:#FA3D79 }
```

This example shows the color as background, it is applied via the CSS property "background".

To optimize and compress your CSS code, you can use our [online CSS compressor and optimizer](#) based on csstidy. If you want to create a linear or radial gradient as background or border, check our [CSS Gradient Generator](#).



Hey! You found this booklet interesting? Support Converting Colors with the new Membership Option!

The pro membership hides all ads, plus gives you double the colors in the color bucket, and more awesome pro features!

**[Learn more, Memberships starting at \\$2.50/m!](#)**

**Follow me  
on Twitter!**

@ConvertingColor