

Converting Colors

Decimal(16403329)

Have a look what the booklet for
Decimal(16403329) contains.

Decimal(16403329)	3
<i>Conversions</i>	4
<i>Details</i>	6
<i>Harmonies</i>	11
<i>Previews</i>	23
<i>Color Blindness Simulation</i>	26
<i>CSS Examples</i>	29

Color

Decimal(16403329)

Conversions

Conversions Part 1

Format	Color
Hex	FA4B81
RGB	250, 75, 129
RGB Percent	98%, 29%, 51%
CMY	0.0196, 0.7059, 0.4941
CMYK	0.00, 0.70, 0.48, 0.02
HSL	341°, 95%, 64%
HSV	341°, 70%, 98%
XYZ	45.9029, 26.9411, 23.5497
YIQ	133.4810, 86.9660, 53.8940

Conversions

Conversions Part 2

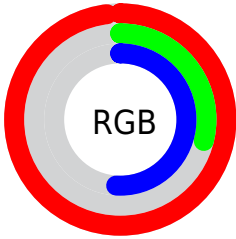
Format	Color
R_{YB}	250, 75, 129
Decimal	16403329
CIE _{Lab}	58.92, 69.36, 9.12
CIE _{LCh}	59, 69.954, 7.491
Yxy	26.9411, 0.4762, 0.2795
Android (android.graphics.Color)	4294593409 (0xFFFA4B81)
YUV	133.4810, -2.2091, 102.1872
Hunter-Lab	51.9048, 67.0258, 9.4330

Details

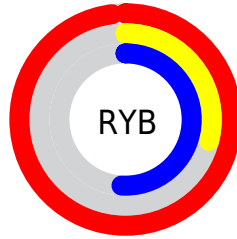
The Decimal color **16403329** is a light color, and the websafe version is hex **FF6699**. The color can be described as light washed rose. A complement of this color would be **4979396**, and the grayscale version is **8750469**.

A 20% lighter version of the original color is **16746422**, and **12320848** is the 20% darker color. If you saturate the color by 10%, you get **16396912**, and if you desaturate by 10%, it is **16409746**.

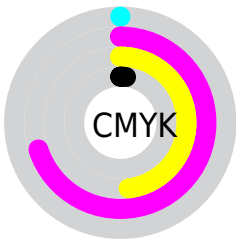
Distribution



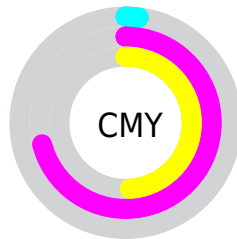
- Red (98%)
- Green (29%)
- Blue (51%)



- Red (98%)
- Yellow (29%)
- Blue (51%)



- Cyan (0%)
- Magenta (70%)
- Yellow (48%)
- Black (2%)



- Cyan (2%)
- Magenta (71%)
- Yellow (49%)

Brightness & Saturation Gradients

These gradients show how the Decimal color 16403329 changes by changing the brightness by 10 percent. The first figure shows a shift by +10% for each color and the second figure -10%.

Similar to the brightness gradients but the following saturation gradients show a change of the Decimal color 16403329 by changing the saturation by 10% instead.

 16403329

 16403329

16777215

 14362728

 16746422

 12320848

 16753873

 10289210

 16761325

 8323109

 16769023

 6357007

 16776703

 4521987

 2293761

 0

 16403329

 16403329

 16396912

 16409746

 16390494

 16416164

 16384077

 16422581

 16428998

 16435415

 16441833

 16448250

 16449535

Harmonies

Analogous

The Analogous color harmony consists of three colors that are next to each other on the color wheel.



14833854



16403329



15818054

Triad

The Triadic color harmony groups three colors that are evenly spaced from another and form a triangle on the color wheel.



16403329



5938972



41471

Complementary

The Complementary color scheme is a pair of colors which are on the opposite of each other on the color wheel.



16403329



4979396

Split Complementary

Split-complementary colors differ from the complementary color scheme. The scheme consists of three colors, the original color and two neighbors of the complement color.



43223



16403329



42844

Square

The Square scheme is like the rectangle color scheme, but the four colors are evenly spaced on the color wheel.



16403329



10260480



43676



37119

Rectangle

The Rectangle color scheme consists of four colors that form a rectangle on the color wheel.



16403329



14446624



43676



42229

Sweetspot

The Sweet Spot groups the original color and five complimentary colors.



16403329



16763354



12798970



8413289



0



8421504

Same Dimension

The Same Dimension uses a secret algorithm to generate beautiful new colors.



16403329



16722283



16411467



8220788



12386362



3997715

Inverse Universe

The Inverse Universe completely reimagines the original color for something new.



16403329



16722283



4971258



8220788



12386362



3997715

Previews

White Background



This preview shows how the Decimal color 16403329 looks on a white background.

Color Contrast Check

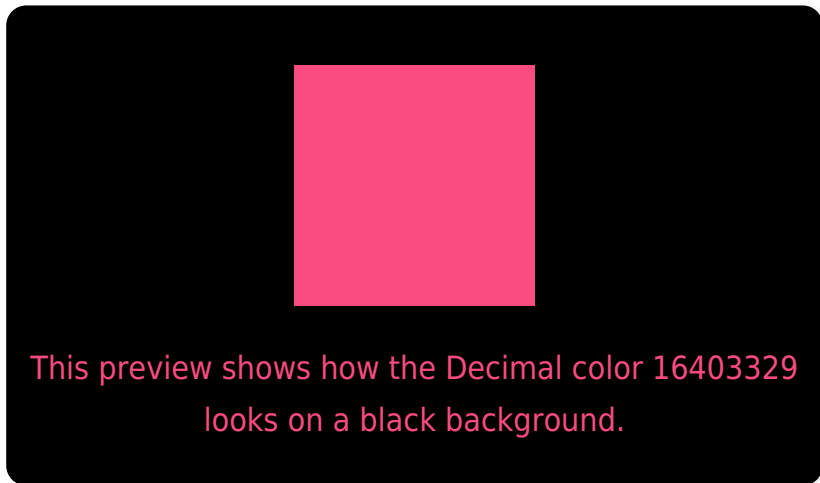
Large Text (above 18pt) WCAG AA ✓ Pass

Any Text WCAG AA × Fail

Large Text (above 18pt) WCAG AAA × Fail

Any Text WCAG AAA × Fail

Black Background



Color Contrast Check

Large Text (above 18pt) WCAG AA ✓ Pass

Any Text WCAG AA ✓ Pass

Large Text (above 18pt) WCAG AAA ✓ Pass

Any Text WCAG AAA × Fail

If you want to check with other color combinations, try the [Color Contrast Checker](#).

Decimal 16403329 Background



This preview shows how black text looks on a background with the Decimal color 16403329.



This preview shows how white text looks on a background with the Decimal color 16403329.

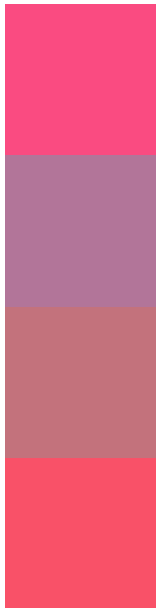
Color Blindness Simulation

Color vision deficiency is a very complex topic, and I could not describe the different causes any better than Wikipedia does, so if you want to learn more, you should check out their [article about color blindness](#).

Dichromacy



Trichromacy



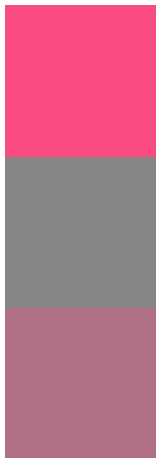
Original Color
16403329

Protanomaly
11695513

Deuteranomaly
12808828

Tritanomaly
16339304

Monochromacy



Original Color
16403329

Achromatopsia
8750469

Achromatomaly
11563140

CSS Examples

Text

The CSS property to change the color of the text to Decimal 16403329 is called "color". The color property can be set on classes, ids or directly on the HTML element.

This example shows how text in the color #FA4B81 looks like.

```
.text, #text, p{  
    color:#FA4B81  
}
```

If you want to add a text shadow in that color use the text-shadow property, you can generate a text shadow directly with our [CSS Text Shadow Generator](#).

Here you see how black text with a 4 pixel #FA4B81 colored shadow looks like.

```
.shadow{ text-shadow: 4px 4px 2px #FA4B81
}
```

Border

The CSS property to change the border of an element to Decimal 16403329 is called "border". The border property can be set on classes, ids or directly on the HTML element.

This example shows the color as border, it can be applied via the CSS property "border" or "border-color".

```
.border, #border, table{ border:4px solid
#FA4B81 }
```

If only the border color should be changed use the property `border-color`.

```
.border{ border-color:#FA4B81 }
```

If you want to add a box shadow in that color use:

Here you see how a box with a 4 pixel #FA4B81 colored shadow looks like.

```
.boxshadow{ -moz-box-shadow:4px 4px 4px  
4px #FA4B81; -webkit-box-shadow:4px 4px  
4px 4px #FA4B81; box-shadow:4px 4px 4px  
4px #FA4B81 }
```

Background

The CSS property to change the background color of an element to Decimal 16403329 is called "background". The background property can be set on classes, ids or directly on the HTML element.

```
.background, #background, body{  
background:#FA4B81 }
```

If only the background color should be changed can be used:

```
.background{ background-color:#FA4B81 }
```

This example shows the color as background, it is applied via the CSS property "background".

To optimize and compress your CSS code, you can use our [online CSS compressor and optimizer](#) based on csstidy. If you want to create a linear or radial gradient as background or border, check our [CSS Gradient Generator](#).

Hey! You found this booklet interesting? Support Converting Colors with the new Membership Option!

The pro membership hides all ads, plus gives you double the colors in the color bucket, and more awesome pro features!

[Learn more, Memberships starting at \\$2.50/m!](#)

**Follow me
on Twitter!**

@ConvertingColor