

# Converting Colors

Decimal(16404861)

Have a look what the booklet for  
Decimal(16404861) contains.

<b>Decimal(16404861)</b> .....	3
<i><b>Conversions</b></i> .....	4
<i><b>Details</b></i> .....	6
<i><b>Harmonies</b></i> .....	11
<i><b>Previews</b></i> .....	23
<i><b>Color Blindness Simulation</b></i> .....	26
<i><b>CSS Examples</b></i> .....	29

# **Color**

**Decimal(16404861)**

# Conversions

## Conversions Part 1

Format	Color
Hex	FA517D
RGB	250, 81, 125
RGB Percent	98%, 32%, 49%
CMY	0.0196, 0.6824, 0.5098
CMYK	0.00, 0.68, 0.50, 0.02
HSL	344°, 94%, 65%
HSV	344°, 68%, 98%
XYZ	46.0684, 27.6895, 22.3186
YIQ	136.5470, 86.6000, 49.5120

# Conversions

## Conversions Part 2

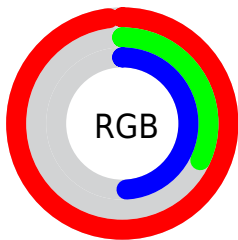
Format	Color
R <sub>Y</sub> B	250, 81, 125
Decimal	16404861
CIE Lab	59.61, 66.86, 12.43
CIE LCh	60, 68.011, 10.534
Yxy	27.6895, 0.4795, 0.2882
Android (android.graphics.Color)	4294594941 (0xFFFA517D)
YUV	136.5470, -5.6927, 99.4983
Hunter-Lab	52.6208, 64.1866, 11.6874

# Details

The Decimal color **16404861** is a light color, and the websafe version is hex **FF6699**. The color can be described as light muted rose. A complement of this color would be **5372622**, and the grayscale version is **9013641**.

A 20% lighter version of the original color is **16747697**, and **12320845** is the 20% darker color. If you saturate the color by 10%, you get **16398443**, and if you desaturate by 10%, it is **16411279**.

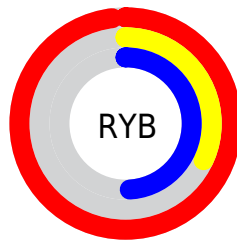
# Distribution



Red (98%)

Green (32%)

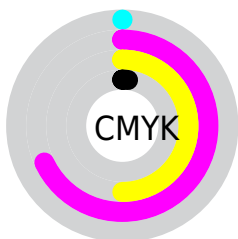
Blue (49%)



Red (98%)

Yellow (32%)

Blue (49%)

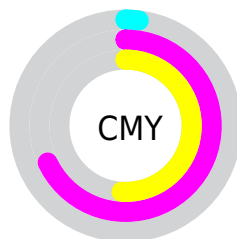


Cyan (0%)

Magenta (68%)

Yellow (50%)

Black (2%)



Cyan (2%)

Magenta (68%)

Yellow (51%)

# Brightness & Saturation Gradients

These gradients show how the Decimal color 16404861 changes by changing the brightness by 10 percent. The first figure shows a shift by +10% for each color and the second figure -10%.

Similar to the brightness gradients but the following saturation gradients show a change of the Decimal color 16404861 by changing the saturation by 10% instead.



 16404861

 16404861

16777215

 14365028

 16747697

 12320845

 16755149

 10289206

 16762601

 8323105

 16770047

 6357003

 4521987

 2359297

 0

 16404861

 16404861

■ 16398443

■ 16411279

■ 16392024

■ 16417698

■ 16385606

■ 16424116

■ 16384065

■ 16430535

■ 16436953

■ 16443372

■ 16449534

■ 16449535

# Harmonies

## Analogous

The Analogous color harmony consists of three colors that are next to each other on the color wheel.



15096505



16404861



15623236

# Triad

The Triadic color harmony groups three colors that are evenly spaced from another and form a triangle on the color wheel.



16404861



5677354



41471

# Complementary

The Complementary color scheme is a pair of colors which are on the opposite of each other on the color wheel.



16404861



5372622

# Split Complementary

Split-complementary colors differ from the complementary color scheme. The scheme consists of three colors, the original color and two neighbors of the complement color.



43484



16404861



43365

# Square

The Square scheme is like the rectangle color scheme, but the four colors are evenly spaced on the color wheel.



16404861



9999104



43940



1478911

# Rectangle

The Rectangle color scheme consists of four colors that form a rectangle on the color wheel.



16404861



14251553



43940



42231



# Sweetspot

The Sweet Spot groups the original color and five complimentary colors.



16404861



16764121



13455866



8413545



0



8421504



# Same Dimension

The Same Dimension uses a secret algorithm to generate beautiful new colors.



16404861



16724070



16414801



8220788



12386353



3997712



# Inverse Universe

The Inverse Universe completely reimagines the original color for something new.



16404861



16724070



5362682



8220788



12386353



3997712



# Previews

## White Background



This preview shows how the Decimal color 16404861 looks on a white background.

## Color Contrast Check

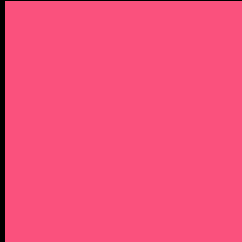
Large Text (above 18pt) WCAG AA ✓ Pass

Any Text WCAG AA × Fail

Large Text (above 18pt) WCAG AAA × Fail

Any Text WCAG AAA × Fail

# Black Background



This preview shows how the Decimal color 16404861 looks on a black background.

## Color Contrast Check

Large Text (above 18pt) WCAG AA ✓ Pass

Any Text WCAG AA ✓ Pass

Large Text (above 18pt) WCAG AAA ✓ Pass

Any Text WCAG AAA × Fail

If you want to check with other color combinations, try the [Color Contrast Checker](#).



## Decimal 16404861 Background



This preview shows how black text looks on a background with the Decimal color 16404861.



This preview shows how white text looks on a background with the Decimal color 16404861.

# Color Blindness Simulation

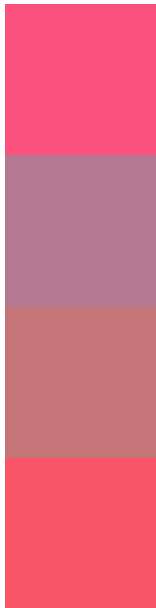
Color vision deficiency is a very complex topic, and I could not describe the different causes any better than Wikipedia does, so if you want to learn more, you should check out their [article about color blindness](#).

## Dichromacy





# Trichromacy



**Original Color**  
16404861

**Protanomaly**  
11892882

**Deuteranomaly**  
12940664

**Tritanomaly**  
16340329

# Monochromacy



**Original Color**  
16404861

**Achromatopsia**  
9013641

**Achromatomaly**  
11695493

# CSS Examples

## Text

The CSS property to change the color of the text to Decimal 16404861 is called "color". The color property can be set on classes, ids or directly on the HTML element.

This example shows how text in the color #FA517D looks like.

```
.text, #text, p{  
    color:#FA517D  
}
```

If you want to add a text shadow in that color use the text-shadow property, you can generate a text shadow directly with our [CSS Text Shadow Generator](#).

Here you see how black text with a 4 pixel #FA517D colored shadow looks like.

```
.shadow{ text-shadow: 4px 4px 2px #FA517D
}
```

## Border

The CSS property to change the border of an element to Decimal 16404861 is called "border". The border property can be set on classes, ids or directly on the HTML element.

This example shows the color as border, it can be applied via the CSS property "border" or "border-color".

```
.border, #border, table{ border:4px solid
#FA517D }
```

If only the border color should be changed use the property `border-color`.

```
.border{ border-color:#FA517D }
```

If you want to add a box shadow in that color use:

Here you see how a box with a 4 pixel #FA517D colored shadow looks like.

```
.boxshadow{ -moz-box-shadow:4px 4px 4px  
4px #FA517D; -webkit-box-shadow:4px 4px  
4px 4px #FA517D; box-shadow:4px 4px 4px  
4px #FA517D }
```

# Background

The CSS property to change the background color of an element to Decimal 16404861 is called "background". The background property can be set on classes, ids or directly on the HTML element.

```
.background, #background, body{  
background:#FA517D }
```

If only the background color should be changed can be used:

```
.background{ background-color:#FA517D }
```

This example shows the color as background, it is applied via the CSS property "background".

To optimize and compress your CSS code, you can use our [online CSS compressor and optimizer](#) based on csstidy. If you want to create a linear or radial gradient as background or border, check our [CSS Gradient Generator](#).



Hey! You found this booklet interesting? Support Converting Colors with the new Membership Option!

The pro membership hides all ads, plus gives you double the colors in the color bucket, and more awesome pro features!

**[Learn more, Memberships starting at \\$2.50/m!](#)**

**Follow me  
on Twitter!**

@ConvertingColor