

# Converting Colors

Decimal(16407959)

Have a look what the booklet for  
Decimal(16407959) contains.

<b>Decimal(16407959)</b> .....	3
<i><b>Conversions</b></i> .....	4
<i><b>Details</b></i> .....	6
<i><b>Harmonies</b></i> .....	11
<i><b>Previews</b></i> .....	23
<i><b>Color Blindness Simulation</b></i> .....	26
<i><b>CSS Examples</b></i> .....	29

# **Color**

**Decimal(16407959)**

# Conversions

## Conversions Part 1

Format	Color
Hex	FA5D97
RGB	250, 93, 151
RGB Percent	98%, 36%, 59%
CMY	0.0196, 0.6353, 0.4078
CMYK	0.00, 0.63, 0.40, 0.02
HSL	338°, 94%, 67%
HSV	338°, 63%, 98%
XYZ	48.9246, 30.3871, 32.5648
YIQ	146.5550, 74.9540, 51.3220

# Conversions

## Conversions Part 2

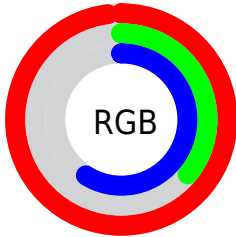
<b>Format</b>	<b>Color</b>
<b>R<sub>YB</sub></b>	250, 93, 151
Decimal	16407959
CIE <sub>Lab</sub>	61.99, 64.56, 0.71
CIE <sub>LCh</sub>	62, 64.567, 0.630
Yxy	30.3871, 0.4373, 0.2716
Android (android.graphics.Color)	4294598039 (0xFFFA5D97)
YUV	146.5550, 2.1914, 90.7213
Hunter-Lab	55.1245, 61.9563, 3.5615

# Details

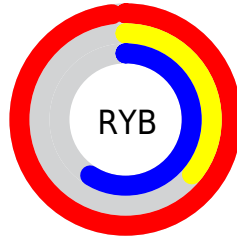
The Decimal color **16407959** is a light color, and the websafe version is hex **FF6699**. The color can be described as light muted rose. A complement of this color would be **6159040**, and the grayscale version is **9605778**.

A 20% lighter version of the original color is **16750285**, and **12393316** is the 20% darker color. If you saturate the color by 10%, you get **16401543**, and if you desaturate by 10%, it is **16414375**.

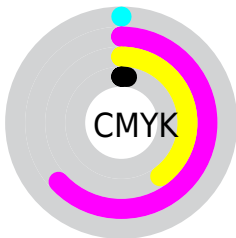
# Distribution



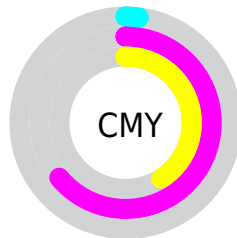
- Red (98%)
- Green (36%)
- Blue (59%)



- Red (98%)
- Yellow (36%)
- Blue (59%)



- Cyan (0%)
- Magenta (63%)
- Yellow (40%)
- Black (2%)



- Cyan (2%)
- Magenta (64%)
- Yellow (41%)

# Brightness & Saturation Gradients

These gradients show how the Decimal color 16407959 changes by changing the brightness by 10 percent. The first figure shows a shift by +10% for each color and the second figure -10%.

Similar to the brightness gradients but the following saturation gradients show a change of the Decimal color 16407959 by changing the saturation by 10% instead.



 16407959

 16407959

16777215

 14368637

 16750285

 12393316

 16757737

 10420301

 16765183

 8454198

 16772863

 6553633

 4784137

 2818049

 0

 16407959

 16407959

■ 16401543

■ 16414375

■ 16395127

■ 16420791

■ 16388712

■ 16427206

■ 16384092

■ 16433622

■ 16440038

■ 16446454

■ 16449535

# Harmonies

## Analogous

The Analogous color harmony consists of three colors that are next to each other on the color wheel.



14380239



16407959



16279135

# Triad

The Triadic color harmony groups three colors that are evenly spaced from another and form a triangle on the color wheel.



16407959



7906087



43769

# Complementary

The Complementary color scheme is a pair of colors which are on the opposite of each other on the color wheel.



16407959



6159040

# Split Complementary

Split-complementary colors differ from the complementary color scheme. The scheme consists of three colors, the original color and two neighbors of the complement color.



45263



16407959



44123

# Square

The Square scheme is like the rectangle color scheme, but the four colors are evenly spaced on the color wheel.



16407959



11637514



45205



40191

# Rectangle

The Rectangle color scheme consists of four colors that form a rectangle on the color wheel.



16407959



15299902



45205



44525



# Sweetspot

The Sweet Spot groups the original color and five complimentary colors.



16407959



16764896



12475898



8413805



0



8421504



# Same Dimension

The Same Dimension uses a secret algorithm to generate beautiful new colors.



16407959



16728198



16412509



8220789



12386374



3997719



# Inverse Universe

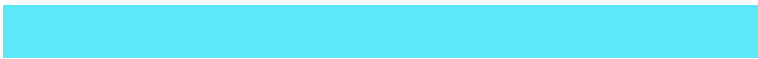
The Inverse Universe completely reimagines the original color for something new.



16407959



16728198



6154490



8220789



12386374



3997719



# Previews

## White Background



This preview shows how the Decimal color 16407959 looks on a white background.

## Color Contrast Check

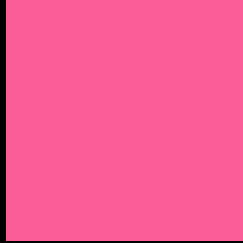
Large Text (above 18pt) WCAG AA × Fail

Any Text WCAG AA × Fail

Large Text (above 18pt) WCAG AAA × Fail

Any Text WCAG AAA × Fail

# Black Background



This preview shows how the Decimal color 16407959 looks on a black background.

## Color Contrast Check

Large Text (above 18pt) WCAG AA ✓ Pass

Any Text WCAG AA ✓ Pass

Large Text (above 18pt) WCAG AAA ✓ Pass

Any Text WCAG AAA ✓ Pass

If you want to check with other color combinations, try the [Color Contrast Checker](#).



## Decimal 16407959 Background



This preview shows how black text looks on a background with the Decimal color 16407959.



This preview shows how white text looks on a background with the Decimal color 16407959.

# Color Blindness Simulation

Color vision deficiency is a very complex topic, and I could not describe the different causes any better than Wikipedia does, so if you want to learn more, you should check out their [article about color blindness](#).


## Dichromacy



**Original Color**  
16407959

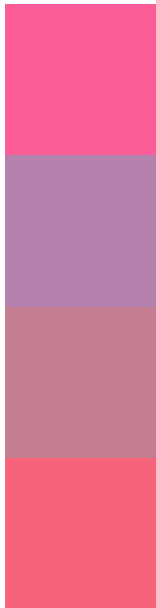
**Protanopia**  
9344441

**Deuteranopia**  
10981775



**Tritanopia**  
16213613

# Trichromacy



**Original Color**  
16407959

**Protanomaly**  
11895213

**Deuteranomaly**  
12942994

**Tritanomaly**  
16278396

# Monochromacy



**Original Color**  
16407959

**Achromatopsia**  
9671571

**Achromatomaly**  
12091284

# CSS Examples

## Text

The CSS property to change the color of the text to Decimal 16407959 is called "color". The color property can be set on classes, ids or directly on the HTML element.

This example shows how text in the color #FA5D97 looks like.

```
.text, #text, p{  
    color:#FA5D97  
}
```

If you want to add a text shadow in that color use the text-shadow property, you can generate a text shadow directly with our [CSS Text Shadow Generator](#).

Here you see how black text with a 4 pixel #FA5D97 colored shadow looks like.

```
.shadow{ text-shadow: 4px 4px 2px #FA5D97
}
```

## Border

The CSS property to change the border of an element to Decimal 16407959 is called "border". The border property can be set on classes, ids or directly on the HTML element.

This example shows the color as border, it can be applied via the CSS property "border" or "border-color".

```
.border, #border, table{ border:4px solid
#FA5D97 }
```

If only the border color should be changed use the property `border-color`.

```
.border{ border-color:#FA5D97 }
```

If you want to add a box shadow in that color use:

Here you see how a box with a 4 pixel #FA5D97 colored shadow looks like.

```
.boxshadow{ -moz-box-shadow:4px 4px 4px  
4px #FA5D97; -webkit-box-shadow:4px 4px  
4px 4px #FA5D97; box-shadow:4px 4px 4px  
4px #FA5D97 }
```

# Background

The CSS property to change the background color of an element to Decimal 16407959 is called "background". The background property can be set on classes, ids or directly on the HTML element.

```
.background, #background, body{  
background:#FA5D97 }
```

If only the background color should be changed can be used:

```
.background{ background-color:#FA5D97 }
```

This example shows the color as background, it is applied via the CSS property "background".

To optimize and compress your CSS code, you can use our [online CSS compressor and optimizer](#) based on csstidy. If you want to create a linear or radial gradient as background or border, check our [CSS Gradient Generator](#).



Hey! You found this booklet interesting? Support Converting Colors with the new Membership Option!

The pro membership hides all ads, plus gives you double the colors in the color bucket, and more awesome pro features!

**[Learn more, Memberships starting at \\$2.50/m!](#)**

**Follow me  
on Twitter!**

@ConvertingColor