

Converting Colors

Decimal(16408713)

Have a look what the booklet for
Decimal(16408713) contains.

Decimal(16408713)	3
<i>Conversions</i>	4
<i>Details</i>	6
<i>Harmonies</i>	11
<i>Previews</i>	23
<i>Color Blindness Simulation</i>	26
<i>CSS Examples</i>	29

Color

Decimal(16408713)

Conversions

Conversions Part 1

Format	Color
Hex	FA6089
RGB	250, 96, 137
RGB Percent	98%, 38%, 54%
CMY	0.0196, 0.6235, 0.4627
CMYK	0.00, 0.62, 0.45, 0.02
HSL	344°, 94%, 68%
HSV	344°, 62%, 98%
XYZ	48.1226, 30.4959, 27.0169
YIQ	146.7200, 78.6230, 45.3990

Conversions

Conversions Part 2

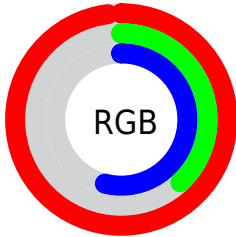
Format	Color
R_{YB}	250, 96, 137
Decimal	16408713
CIE _{Lab}	62.08, 61.96, 8.94
CIE _{LCh}	62, 62.602, 8.213
Yxy	30.4959, 0.4556, 0.2887
Android (android.graphics.Color)	4294598793 (0xFFFA6089)
YUV	146.7200, -4.7920, 90.5766
Hunter-Lab	55.2231, 58.9083, 9.6496

Details

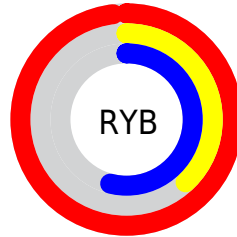
The Decimal color **16408713** is a light color, and the websafe version is hex **FF6699**. A complement of this color would be **6355665**, and the grayscale version is **9671571**.

A 20% lighter version of the original color is **16751038**, and **12394839** is the 20% darker color. If you saturate the color by 10%, you get **16402295**, and if you desaturate by 10%, it is **16415131**.

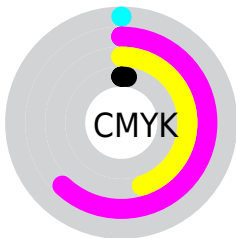
Distribution



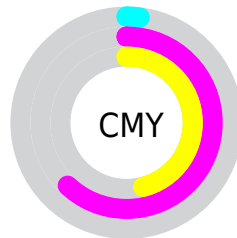
- Red (98%)
- Green (38%)
- Blue (54%)



- Red (98%)
- Yellow (38%)
- Blue (54%)



- Cyan (0%)
- Magenta (62%)
- Yellow (45%)
- Black (2%)



- Cyan (2%)
- Magenta (62%)
- Yellow (46%)

Brightness & Saturation Gradients

These gradients show how the Decimal color 16408713 changes by changing the brightness by 10 percent. The first figure shows a shift by +10% for each color and the second figure -10%.

Similar to the brightness gradients but the following saturation gradients show a change of the Decimal color 16408713 by changing the saturation by 10% instead.

 16408713

 16408713

16777215

 14369648

 16751038

 12394839

 16758490

 10354752

 16765942

 8454187

 16773375

 6488087

 4718594

 2686977

 0

 16408713

 16408713

■ 16402295

■ 16415131

■ 16395876

■ 16421550

■ 16389458

■ 16427968

■ 16384067

■ 16434386

■ 16440805

■ 16447223

■ 16449535

Harmonies

Analogous

The Analogous color harmony consists of three colors that are next to each other on the color wheel.



14969280



16408713



15887700

Triad

The Triadic color harmony groups three colors that are evenly spaced from another and form a triangle on the color wheel.



16408713



6858295



43005

Complementary

The Complementary color scheme is a pair of colors which are on the opposite of each other on the color wheel.



16408713



6355665

Split Complementary

Split-complementary colors differ from the complementary color scheme. The scheme consists of three colors, the original color and two neighbors of the complement color.



45017



16408713



44651

Square

The Square scheme is like the rectangle color scheme, but the four colors are evenly spaced on the color wheel.



16408713



10786838



45220



3315711

Rectangle

The Rectangle color scheme consists of four colors that form a rectangle on the color wheel.



16408713



14646582



45220



43764

Sweetspot

The Sweet Spot groups the original color and five complimentary colors.



16408713



16765405



13721850



8414059



0



8421504

Same Dimension

The Same Dimension uses a secret algorithm to generate beautiful new colors.



16408713



16728693



16417888



8220788



12386354



3997712

Inverse Universe

The Inverse Universe completely reimagines the original color for something new.



16408713



16728693



6346490



8220788



12386354



3997712

Previews

White Background



This preview shows how the Decimal color 16408713 looks on a white background.

Color Contrast Check

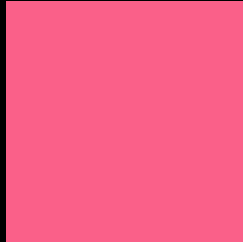
Large Text (above 18pt) WCAG AA × Fail

Any Text WCAG AA × Fail

Large Text (above 18pt) WCAG AAA × Fail

Any Text WCAG AAA × Fail

Black Background



This preview shows how the Decimal color 16408713 looks on a black background.

Color Contrast Check

Large Text (above 18pt) WCAG AA ✓ Pass

Any Text WCAG AA ✓ Pass

Large Text (above 18pt) WCAG AAA ✓ Pass

Any Text WCAG AAA ✓ Pass

If you want to check with other color combinations, try the [Color Contrast Checker](#).

Decimal 16408713 Background



This preview shows how black text looks on a background with the Decimal color 16408713.



This preview shows how white text looks on a background with the Decimal color 16408713.

Color Blindness Simulation

Color vision deficiency is a very complex topic, and I could not describe the different causes any better than Wikipedia does, so if you want to learn more, you should check out their [article about color blindness](#).

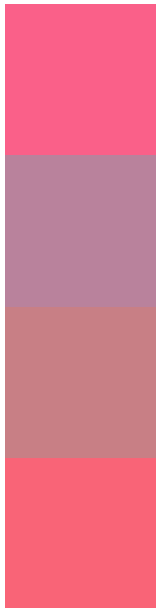
Dichromacy





Tritanopia
16279148

Trichromacy



Original Color
16408713

Protanomaly
12157596

Deuteranomaly
13139845

Tritanomaly
16344183

Monochromacy



Original Color
16408713

Achromatopsia
9671571

Achromatomaly
12091535

CSS Examples

Text

The CSS property to change the color of the text to Decimal 16408713 is called "color". The color property can be set on classes, ids or directly on the HTML element.

This example shows how text in the color #FA6089 looks like.

```
.text, #text, p{  
  color:#FA6089  
}
```

If you want to add a text shadow in that color use the text-shadow property, you can generate a text shadow directly with our [CSS Text Shadow Generator](#).

Here you see how black text with a 4 pixel #FA6089 colored shadow looks like.

```
.shadow{ text-shadow: 4px 4px 2px #FA6089
}
```

Border

The CSS property to change the border of an element to Decimal 16408713 is called "border". The border property can be set on classes, ids or directly on the HTML element.

This example shows the color as border, it can be applied via the CSS property "border" or "border-color".

```
.border, #border, table{ border:4px solid
#FA6089 }
```

If only the border color should be changed use the property `border-color`.

```
.border{ border-color:#FA6089 }
```

If you want to add a box shadow in that color use:

Here you see how a box with a 4 pixel #FA6089 colored shadow looks like.

```
.boxshadow{ -moz-box-shadow:4px 4px 4px  
4px #FA6089; -webkit-box-shadow:4px 4px  
4px 4px #FA6089; box-shadow:4px 4px 4px  
4px #FA6089 }
```

Background

The CSS property to change the background color of an element to Decimal 16408713 is called "background". The background property can be set on classes, ids or directly on the HTML element.

```
.background, #background, body{  
background:#FA6089 }
```

If only the background color should be changed can be used:

```
.background{ background-color:#FA6089 }
```

This example shows the color as background, it is applied via the CSS property "background".

To optimize and compress your CSS code, you can use our [online CSS compressor and optimizer](#) based on csstidy. If you want to create a linear or radial gradient as background or border, check our [CSS Gradient Generator](#).

Hey! You found this booklet interesting? Support Converting Colors with the new Membership Option!

The pro membership hides all ads, plus gives you double the colors in the color bucket, and more awesome pro features!

[Learn more, Memberships starting at \\$2.50/m!](#)

**Follow me
on Twitter!**

@ConvertingColor