

Converting Colors

Decimal(16409723)

Have a look what the booklet for
Decimal(16409723) contains.

Decimal(16409723)	3
<i>Conversions</i>	4
<i>Details</i>	6
<i>Harmonies</i>	11
<i>Previews</i>	23
<i>Color Blindness Simulation</i>	26
<i>CSS Examples</i>	29

Color

Decimal(16409723)

Conversions

Conversions Part 1

Format	Color
Hex	FA647B
RGB	250, 100, 123
RGB Percent	98%, 39%, 48%
CMY	0.0196, 0.6078, 0.5176
CMYK	0.00, 0.60, 0.51, 0.02
HSL	351°, 94%, 69%
HSV	351°, 60%, 98%
XYZ	47.5567, 30.8684, 22.1906
YIQ	147.4720, 82.0170, 38.9530

Conversions

Conversions Part 2

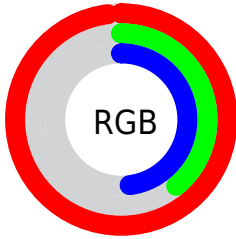
Format	Color
R _Y B	250, 100, 123
Decimal	16409723
CIE Lab	62.40, 59.03, 17.47
CIE LCh	62, 61.558, 16.486
Yxy	30.8684, 0.4727, 0.3068
Android (android.graphics.Color)	4294599803 (0xFFFA647B)
YUV	147.4720, -12.0647, 89.9171
Hunter-Lab	55.5593, 55.5603, 15.2109

Details

The Decimal color **16409723** is a light color, and the websafe version is hex **FF6666**. A complement of this color would be **6617827**, and the grayscale version is **9737364**.

A 20% lighter version of the original color is **16751791**, and **12331083** is the 20% darker color. If you saturate the color by 10%, you get **16403302**, and if you desaturate by 10%, it is **16416144**.

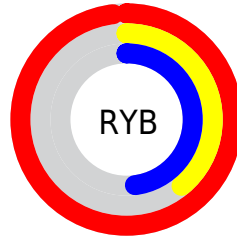
Distribution



Red (98%)

Green (39%)

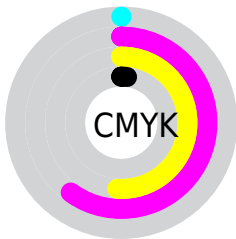
Blue (48%)



Red (98%)

Yellow (39%)

Blue (48%)

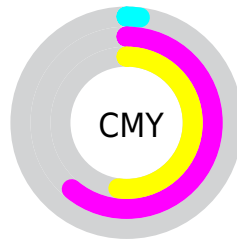


Cyan (0%)

Magenta (60%)

Yellow (51%)

Black (2%)



Cyan (2%)

Magenta (61%)

Yellow (52%)

Brightness & Saturation Gradients

These gradients show how the Decimal color 16409723 changes by changing the brightness by 10 percent. The first figure shows a shift by +10% for each color and the second figure -10%.

Similar to the brightness gradients but the following saturation gradients show a change of the Decimal color 16409723 by changing the saturation by 10% instead.

 16409723

 16409723

16777215

 14370658

 16751791

 12331083

 16759243

 10354740

 16766695

 8388639

 16774143

 6422536

 4587522

 2621441

 0

 16409723

 16409723

 16403302

 16416144

 16396881

 16422565

 16390459

 16428987

 16384038

 16435408

 16441829

 16448250

 16449535

Harmonies

Analogous

The Analogous color harmony consists of three colors that are next to each other on the color wheel.



15558578



16409723



15430985

Triad

The Triadic color harmony groups three colors that are evenly spaced from another and form a triangle on the color wheel.



16409723



5679431



42239

Complementary

The Complementary color scheme is a pair of colors which are on the opposite of each other on the color wheel.



16409723



6617827

Split Complementary

Split-complementary colors differ from the complementary color scheme. The scheme consists of three colors, the original color and two neighbors of the complement color.



44773



16409723



44923

Square

The Square scheme is like the rectangle color scheme, but the four colors are evenly spaced on the color wheel.



16409723



9870624



45492



6788095

Rectangle

The Rectangle color scheme consists of four colors that form a rectangle on the color wheel.



16409723



13993006



45492



43259

Sweetspot

The Sweet Spot groups the original color and five complimentary colors.



16409723



16765400



14771450



8414056



0



8421504

Same Dimension

The Same Dimension uses a secret algorithm to generate beautiful new colors.



16409723



16729956



16422500



8220786



12386333



3997705

Inverse Universe

The Inverse Universe completely reimagines the original color for something new.



16409723



16729956



6605050



8220786



12386333



3997705

Previews

White Background



This preview shows how the Decimal color 16409723 looks on a white background.

Color Contrast Check

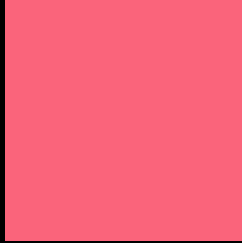
Large Text (above 18pt) WCAG AA × Fail

Any Text WCAG AA × Fail

Large Text (above 18pt) WCAG AAA × Fail

Any Text WCAG AAA × Fail

Black Background



This preview shows how the Decimal color 16409723 looks on a black background.

Color Contrast Check

Large Text (above 18pt) WCAG AA ✓ Pass

Any Text WCAG AA ✓ Pass

Large Text (above 18pt) WCAG AAA ✓ Pass

Any Text WCAG AAA ✓ Pass

If you want to check with other color combinations, try the [Color Contrast Checker](#).

Decimal 16409723 Background



This preview shows how black text looks on a background with the Decimal color 16409723.

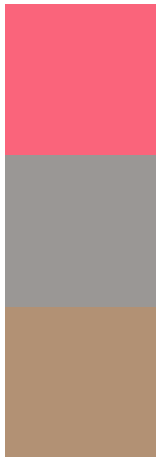


This preview shows how white text looks on a background with the Decimal color 16409723.

Color Blindness Simulation

Color vision deficiency is a very complex topic, and I could not describe the different causes any better than Wikipedia does, so if you want to learn more, you should check out their [article about color blindness](#).


Dichromacy



Original Color
16409723

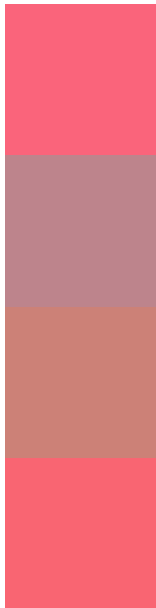
Protanopia
10131349

Deuteranopia
11702644



Tritanopia
16344685

Trichromacy



Original Color
16409723

Protanomaly
12420236

Deuteranomaly
13402487

Tritanomaly
16344434

Monochromacy



Original Color
16409723

Achromatopsia
9671571

Achromatomaly
12092042

CSS Examples

Text

The CSS property to change the color of the text to Decimal 16409723 is called "color". The color property can be set on classes, ids or directly on the HTML element.

This example shows how text in the color #FA647B looks like.

```
.text, #text, p{  
    color:#FA647B  
}
```

If you want to add a text shadow in that color use the text-shadow property, you can generate a text shadow directly with our [CSS Text Shadow Generator](#).

Here you see how black text with a 4 pixel #FA647B colored shadow looks like.

```
.shadow{ text-shadow: 4px 4px 2px #FA647B
}
```

Border

The CSS property to change the border of an element to Decimal 16409723 is called "border". The border property can be set on classes, ids or directly on the HTML element.

This example shows the color as border, it can be applied via the CSS property "border" or "border-color".

```
.border, #border, table{ border:4px solid
#FA647B }
```

If only the border color should be changed use the property `border-color`.

```
.border{ border-color:#FA647B }
```

If you want to add a box shadow in that color use:

Here you see how a box with a 4 pixel #FA647B colored shadow looks like.

```
.boxshadow{ -moz-box-shadow:4px 4px 4px  
4px #FA647B; -webkit-box-shadow:4px 4px  
4px 4px #FA647B; box-shadow:4px 4px 4px  
4px #FA647B }
```

Background

The CSS property to change the background color of an element to Decimal 16409723 is called "background". The background property can be set on classes, ids or directly on the HTML element.

```
.background, #background, body{  
background:#FA647B }
```

If only the background color should be changed can be used:

```
.background{ background-color:#FA647B }
```

This example shows the color as background, it is applied via the CSS property "background".

To optimize and compress your CSS code, you can use our [online CSS compressor and optimizer](#) based on csstidy. If you want to create a linear or radial gradient as background or border, check our [CSS Gradient Generator](#).

Hey! You found this booklet interesting? Support Converting Colors with the new Membership Option!

The pro membership hides all ads, plus gives you double the colors in the color bucket, and more awesome pro features!

[Learn more, Memberships starting at \\$2.50/m!](#)

**Follow me
on Twitter!**

@ConvertingColor