

Converting Colors

Decimal(16427686)

Have a look what the booklet for
Decimal(16427686) contains.

Decimal(16427686)	3
<i>Conversions</i>	4
<i>Details</i>	6
<i>Harmonies</i>	11
<i>Previews</i>	23
<i>Color Blindness Simulation</i>	26
<i>CSS Examples</i>	29

Color

Decimal(16427686)

Conversions

Conversions Part 1

Format	Color
Hex	FAAAA6
RGB	250, 170, 166
RGB Percent	98%, 67%, 65%
CMY	0.0196, 0.3333, 0.3490
CMYK	0.00, 0.32, 0.34, 0.02
HSL	3°, 89%, 82%
HSV	3°, 34%, 98%
XYZ	60.6820, 51.8266, 42.8816
YIQ	193.4640, 48.9640, 15.7160

Conversions

Conversions Part 2

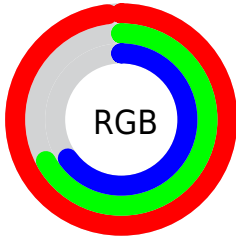
Format	Color
R _Y B	250, 170, 166
Decimal	16427686
CIE Lab	77.18, 28.91, 14.05
CIE LCh	77, 32.145, 25.918
Yxy	51.8266, 0.3905, 0.3335
Android (android.graphics.Color)	4294617766 (0xFFFAAAA6)
YUV	193.4640, -13.5398, 49.5821
Hunter-Lab	71.9907, 24.4765, 15.0771

Details

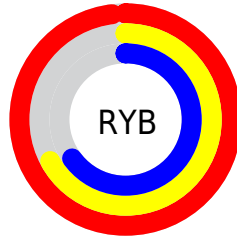
The Decimal color **16427686** is a light color, and the websafe version is hex **FF9999**. A complement of this color would be **10942202**, and the grayscale version is **12763842**.

A 20% lighter version of the original color is **16769757**, and **12612978** is the 20% darker color. If you saturate the color by 10%, you get **16421517**, and if you desaturate by 10%, it is **16433855**.

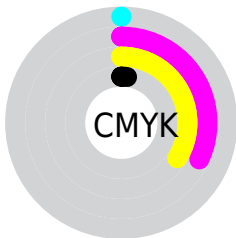
Distribution



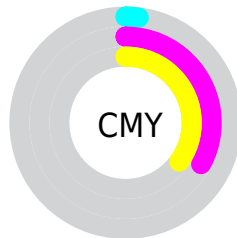
- Red (98%)
- Green (67%)
- Blue (65%)



- Red (98%)
- Yellow (67%)
- Blue (65%)



- Cyan (0%)
- Magenta (32%)
- Yellow (34%)
- Black (2%)



- Cyan (2%)
- Magenta (33%)
- Yellow (35%)

Brightness & Saturation Gradients

These gradients show how the Decimal color 16427686 changes by changing the brightness by 10 percent. The first figure shows a shift by +10% for each color and the second figure -10%.

Similar to the brightness gradients but the following saturation gradients show a change of the Decimal color 16427686 by changing the saturation by 10% instead.

 16427686

 16427686

16777215

 14520204

 16769757

 12612978

 16777210

 10706010

 8864578

 7089196

 5379096

 3735552

 1966081

 0

 16427686

 16427686

 16421517

 16433855

 16415348

 16440024

 16409435

 16445937

 16403266

 16449535

 16397097

 16390928

 16387072

Harmonies

Analogous

The Analogous color harmony consists of three colors that are next to each other on the color wheel.



16165316



16427686



15708558

Triad

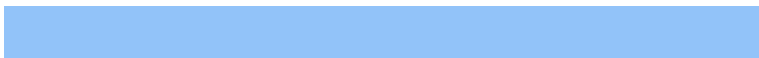
The Triadic color harmony groups three colors that are evenly spaced from another and form a triangle on the color wheel.



16427686



9882524



9618425

Complementary

The Complementary color scheme is a pair of colors which are on the opposite of each other on the color wheel.



16427686



10942202

Split Complementary

Split-complementary colors differ from the complementary color scheme. The scheme consists of three colors, the original color and two neighbors of the complement color.



7129839



16427686



7720889

Square

The Square scheme is like the rectangle color scheme, but the four colors are evenly spaced on the color wheel.



16427686



12174728



6344664



12433652

Rectangle

The Rectangle color scheme consists of four colors that form a rectangle on the color wheel.



16427686



14727301



6344664



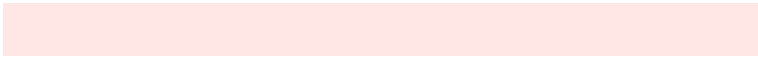
8701688

Sweetspot

The Sweet Spot groups the original color and five complimentary colors.



16427686



16771046



16426743



8417648



0



8421504

Same Dimension

The Same Dimension uses a secret algorithm to generate beautiful new colors.



16427686



16752281



16438182



8221040



12388608



3998464

Inverse Universe

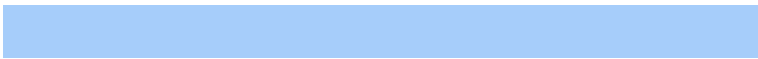
The Inverse Universe completely reimagines the original color for something new.



10942202



10091263



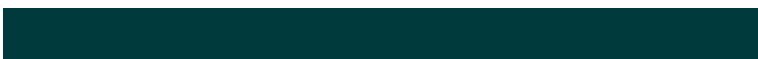
10931706



7371901



46269



14909

Previews

White Background



This preview shows how the Decimal color 16427686 looks on a white background.

Color Contrast Check

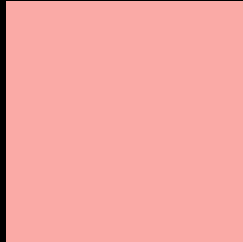
Large Text (above 18pt) WCAG AA × Fail

Any Text WCAG AA × Fail

Large Text (above 18pt) WCAG AAA × Fail

Any Text WCAG AAA × Fail

Black Background



This preview shows how the Decimal color 16427686 looks on a black background.

Color Contrast Check

Large Text (above 18pt) WCAG AA ✓ Pass

Any Text WCAG AA ✓ Pass

Large Text (above 18pt) WCAG AAA ✓ Pass

Any Text WCAG AAA ✓ Pass

If you want to check with other color combinations, try the [Color Contrast Checker](#).

Decimal 16427686 Background



This preview shows how black text looks on a background with the Decimal color 16427686.



This preview shows how white text looks on a background with the Decimal color 16427686.

Color Blindness Simulation

Color vision deficiency is a very complex topic, and I could not describe the different causes any better than Wikipedia does, so if you want to learn more, you should check out their [article about color blindness](#).

Dichromacy





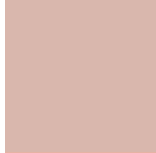
Tritanopia
16492724

Trichromacy



Original Color

16427686



Protanomaly

14268333



Deuteranomaly

15119268



Tritanomaly

16492975

Monochromacy



Original Color

16427686



Achromatopsia

12698049



Achromatomaly

14072247

CSS Examples

Text

The CSS property to change the color of the text to Decimal 16427686 is called "color". The color property can be set on classes, ids or directly on the HTML element.

This example shows how text in the color #FAAAA6 looks like.

```
.text, #text, p{  
    color:#FAAAA6  
}
```

If you want to add a text shadow in that color use the text-shadow property, you can generate a text shadow directly with our [CSS Text Shadow Generator](#).

Here you see how black text with a 4 pixel #FAAAA6 colored shadow looks like.

```
.shadow{ text-shadow: 4px 4px 2px #FAAAA6
}
```

Border

The CSS property to change the border of an element to Decimal 16427686 is called "border". The border property can be set on classes, ids or directly on the HTML element.

This example shows the color as border, it can be applied via the CSS property "border" or "border-color".

```
.border, #border, table{ border:4px solid
#FAAAA6 }
```

If only the border color should be changed use the property `border-color`.

```
.border{ border-color:#FAAAA6 }
```

If you want to add a box shadow in that color use:

Here you see how a box with a 4 pixel #FAAAA6 colored shadow looks like.

```
.boxshadow{ -moz-box-shadow:4px 4px 4px  
4px #FAAAA6; -webkit-box-shadow:4px 4px  
4px 4px #FAAAA6; box-shadow:4px 4px 4px  
4px #FAAAA6 }
```

Background

The CSS property to change the background color of an element to Decimal 16427686 is called "background". The background property can be set on classes, ids or directly on the HTML element.

```
.background, #background, body{  
background:#FAAAA6 }
```

If only the background color should be changed can be used:

```
.background{ background-color:#FAAAA6 }
```

This example shows the color as background, it is applied via the CSS property "background".

To optimize and compress your CSS code, you can use our [online CSS compressor and optimizer](#) based on csstidy. If you want to create a linear or radial gradient as background or border, check our [CSS Gradient Generator](#).

Hey! You found this booklet interesting? Support Converting Colors with the new Membership Option!

The pro membership hides all ads, plus gives you double the colors in the color bucket, and more awesome pro features!

[Learn more, Memberships starting at \\$2.50/m!](#)

**Follow me
on Twitter!**

@ConvertingColor