

Converting Colors

Decimal(16434144)

Have a look what the booklet for
Decimal(16434144) contains.

Decimal(16434144)	3
<i>Conversions</i>	4
<i>Details</i>	6
<i>Harmonies</i>	11
<i>Previews</i>	23
<i>Color Blindness Simulation</i>	26
<i>CSS Examples</i>	29

Color

Decimal(16434144)

Conversions

Conversions Part 1

Format	Color
Hex	FAC3E0
RGB	250, 195, 224
RGB Percent	98%, 76%, 88%
CMY	0.0196, 0.2353, 0.1216
CMYK	0.00, 0.22, 0.10, 0.02
HSL	328°, 85%, 87%
HSV	328°, 22%, 98%
XYZ	72.3940, 64.7360, 79.2007
YIQ	214.7510, 23.4710, 20.6790

Conversions

Conversions Part 2

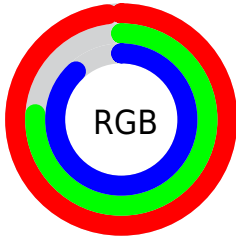
Format	Color
R _Y B	250, 195, 224
Decimal	16434144
CIE Lab	84.35, 24.09, -6.85
CIE LCh	84, 25.047, 344.117
Yxy	64.7360, 0.3346, 0.2992
Android (android.graphics.Color)	4294624224 (0xFFFA _{C3E0})
YUV	214.7510, 4.5598, 30.9134
Hunter-Lab	80.4587, 19.8055, -2.0419

Details

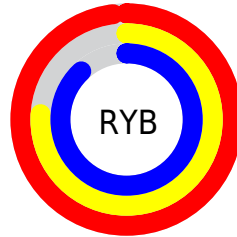
The Decimal color **16434144** is a light color, and the websafe version is hex **FFCCFF**. A complement of this color would be **12843741**, and the grayscale version is **14145495**.

A 20% lighter version of the original color is **16776447**, and **12684713** is the 20% darker color. If you saturate the color by 10%, you get **16427732**, and if you desaturate by 10%, it is **16440556**.

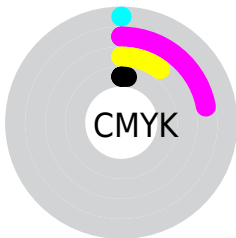
Distribution



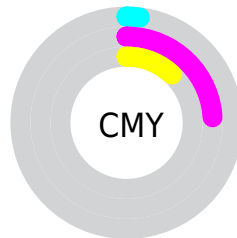
- Red (98%)
- Green (76%)
- Blue (88%)



- Red (98%)
- Yellow (76%)
- Blue (88%)



- Cyan (0%)
- Magenta (22%)
- Yellow (10%)
- Black (2%)



- Cyan (2%)
- Magenta (24%)
- Yellow (12%)

Brightness & Saturation Gradients

These gradients show how the Decimal color 16434144 changes by changing the brightness by 10 percent. The first figure shows a shift by +10% for each color and the second figure -10%.

Similar to the brightness gradients but the following saturation gradients show a change of the Decimal color 16434144 by changing the saturation by 10% instead.

16434144

16434144

16777215

14526660

16776447

12684713

10843022

9132661

7422556

5712709

4134190

2687002

0

 16434144

 16434144

 16427732

 16440556

 16421320

 16446968

 16414909

 16449535

 16408497

 16402085

 16395673

 16389261

 16384132

Harmonies

Analogous

The Analogous color harmony consists of three colors that are next to each other on the color wheel.



14993908



16434144



16761544

Triad

The Triadic color harmony groups three colors that are evenly spaced from another and form a triangle on the color wheel.



16434144



14275749



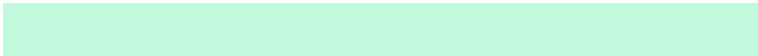
9690866

Complementary

The Complementary color scheme is a pair of colors which are on the opposite of each other on the color wheel.



16434144



12843741

Split Complementary

Split-complementary colors differ from the complementary color scheme. The scheme consists of three colors, the original color and two neighbors of the complement color.



9691357



16434144



12508080

Square

The Square scheme is like the rectangle color scheme, but the four colors are evenly spaced on the color wheel.



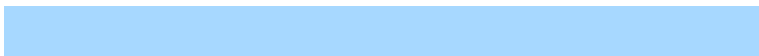
16434144



15781286



10805189



11000063

Rectangle

The Rectangle color scheme consists of four colors that form a rectangle on the color wheel.



16434144



16762041



10805189



9560044

Sweetspot

The Sweet Spot groups the original color and five complimentary colors.



16434144



16772599



14533626



8418683



0



8421504

Same Dimension

The Same Dimension uses a secret algorithm to generate beautiful new colors.



16434144



16760288



16434117



8220791



12386403



3997728

Inverse Universe

The Inverse Universe completely reimagines the original color for something new.



16434144



16760288



12843768



8220791



12386403



3997728

Previews

White Background



This preview shows how the Decimal color 16434144 looks on a white background.

Color Contrast Check

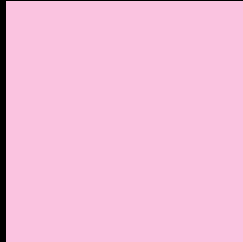
Large Text (above 18pt) WCAG AA × Fail

Any Text WCAG AA × Fail

Large Text (above 18pt) WCAG AAA × Fail

Any Text WCAG AAA × Fail

Black Background



This preview shows how the Decimal color 16434144 looks on a black background.

Color Contrast Check

Large Text (above 18pt) WCAG AA ✓ Pass

Any Text WCAG AA ✓ Pass

Large Text (above 18pt) WCAG AAA ✓ Pass

Any Text WCAG AAA ✓ Pass

If you want to check with other color combinations, try the [Color Contrast Checker](#).

Decimal 16434144 Background



This preview shows how black text looks on a background with the Decimal color 16434144.



This preview shows how white text looks on a background with the Decimal color 16434144.

Color Blindness Simulation

Color vision deficiency is a very complex topic, and I could not describe the different causes any better than Wikipedia does, so if you want to learn more, you should check out their [article about color blindness](#).

Dichromacy





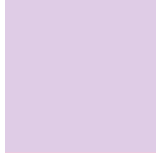
Tritanopia
16303572

Trichromacy



Original Color

16434144



Protanomaly

14666982



Deuteranomaly

15452639



Tritanomaly

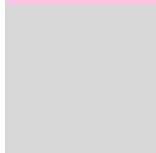
16368856

Monochromacy



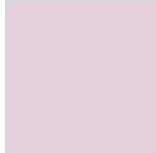
Original Color

16434144



Achromatopsia

14145495



Achromatomaly

14995674

CSS Examples

Text

The CSS property to change the color of the text to Decimal 16434144 is called "color". The color property can be set on classes, ids or directly on the HTML element.

This example shows how text in the color #FAC3E0 looks like.

```
.text, #text, p{  
    color:#FAC3E0  
}
```

If you want to add a text shadow in that color use the text-shadow property, you can generate a text shadow directly with our [CSS Text Shadow Generator](#).

Here you see how black text with a 4 pixel #FAC3E0 colored shadow looks like.

```
.shadow{ text-shadow: 4px 4px 2px #FAC3E0
}
```

Border

The CSS property to change the border of an element to Decimal 16434144 is called "border". The border property can be set on classes, ids or directly on the HTML element.

This example shows the color as border, it can be applied via the CSS property "border" or "border-color".

```
.border, #border, table{ border:4px solid
#FAC3E0 }
```

If only the border color should be changed use the property `border-color`.

```
.border{ border-color:#FAC3E0 }
```

If you want to add a box shadow in that color use:

Here you see how a box with a 4 pixel #FAC3E0 colored shadow looks like.

```
.boxshadow{ -moz-box-shadow:4px 4px 4px  
4px #FAC3E0; -webkit-box-shadow:4px 4px  
4px 4px #FAC3E0; box-shadow:4px 4px 4px  
4px #FAC3E0 }
```

Background

The CSS property to change the background color of an element to Decimal 16434144 is called "background". The background property can be set on classes, ids or directly on the HTML element.

```
.background, #background, body{  
background:#FAC3E0 }
```

If only the background color should be changed can be used:

```
.background{ background-color:#FAC3E0 }
```

This example shows the color as background, it is applied via the CSS property "background".

To optimize and compress your CSS code, you can use our [online CSS compressor and optimizer](#) based on csstidy. If you want to create a linear or radial gradient as background or border, check our [CSS Gradient Generator](#).

Hey! You found this booklet interesting? Support Converting Colors with the new Membership Option!

The pro membership hides all ads, plus gives you double the colors in the color bucket, and more awesome pro features!

[Learn more, Memberships starting at \\$2.50/m!](#)

**Follow me
on Twitter!**

@ConvertingColor